

# Instruction Manual for Dodge® TXT & TDT Cooling Fans

Sizes: TXT505A, TXT5C, TXT6 - TXT12, TDT6 - TDT15, T19.

These instructions must be read thoroughly before installing or operating this product.

**WARNING:** To insure that drive is not unexpectedly started, turn off and lock out or tag power source before proceeding. Failure to observe these precautions could result in bodily injury.

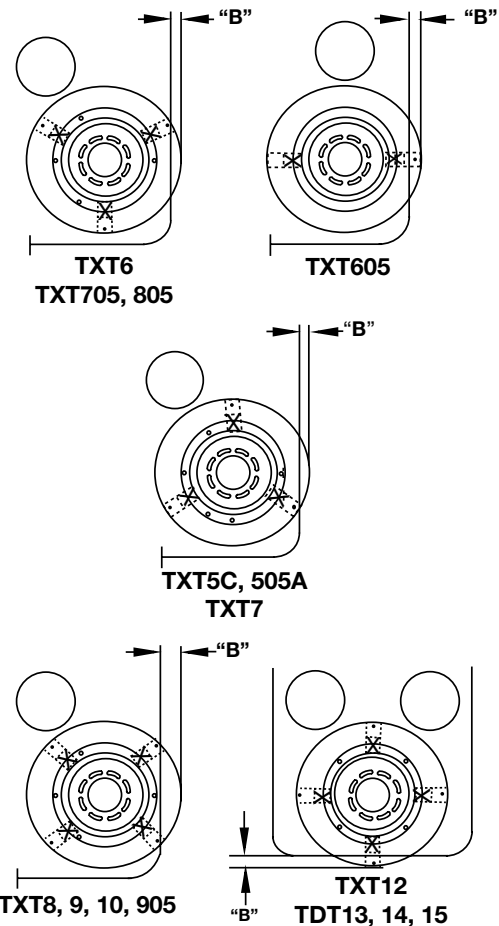
## INSTALLATION

1. Examine all parts for possible damage during shipping. Insure that all parts are free of any foreign materials prior to assembly.
2. Remove every other bolt in the input shaft seal carrier and set aside. Refer to Figure 1 for bolts to be removed.
3. Set shroud mounting straps in place and reinstall input shaft seal carrier bolts until finger tight. Mount fan shroud so that it is centered and align mounting straps. Remove shroud and tighten carrier bolts to recommended torque in Table 1. Note: It is important that straps do not move after they are aligned.
4. Place safety screen on shaft against straps. Place fan blade on input shaft with fan blade edge distance 'A' (Figure 2 and Table 1) from end of shaft. Install set screws in fan blade hub and tighten securely.
5. Mount fan shroud making sure it is centered and install bolts through shroud and safety screen. Install lockwashers and hex nuts, tightening securely.
6. Check clearance between fan blades and shroud to insure that they do not touch.

Table 1

Size	A	B	Torque (lb-ins)
TXT505A	1-11/16	0	360
TXT5C	3-11/16	0	360
TDT6, TXT6A	3-3/4	1-3/4	360
TDT7, TXT7A	4	2-3/16	600
TDT8, TXT8A	4-1/2	2-3/16	360
TDT9, TXT9A	6-11/16	3-3/4	360
TDT10, TXT10A	6-1/2	2-1/4	360
TDT12, TXT12	6-1/4	3-1/4	1800
TDT13	6-1/16	3-15/16	1800
TDT14	9	2-13/16	3120
TDT15	9-7/8	2	3120
TXT605	3-11/16	0	360
TXT705	4-3/16	0	360
TXT805	4-33/64	0	360
TXT905	6-15/16	0	360

**WARNING:** Because of the possible danger to persons(s) or property from accidents which may result from the improper use of products, it is important that correct procedures be followed. Products must be used in accordance with the engineering information specified in the catalog. Proper installation, maintenance and operation procedures must be observed. The instructions in the instruction manuals must be followed. Inspections should be made as necessary to assure safe operation under prevailing conditions. Proper guards and other suitable safety devices or procedures as may be desirable or as may be specified in safety codes should be provided, and are neither provided by Baldor Electric Company nor are the responsibility of Baldor Electric Company. This unit and its associated equipment must be installed, adjusted and maintained by qualified personnel who are familiar with the construction and operation of all equipment in the system and the potential hazards involved. When risk to persons or property may be involved, a holding device must be an integral part of the driven equipment beyond the speed reducer output shaft.



X - Remove bolts marked "X"

Figure 1 - Bolt Removal

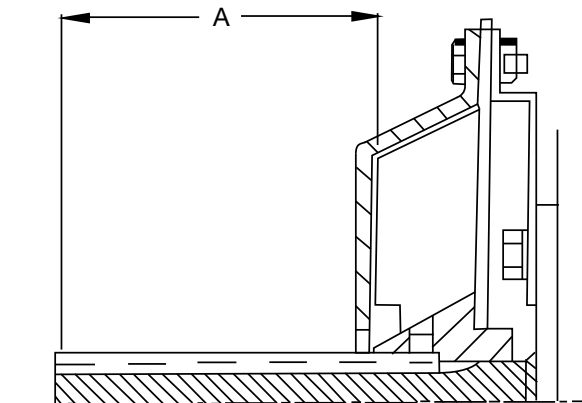
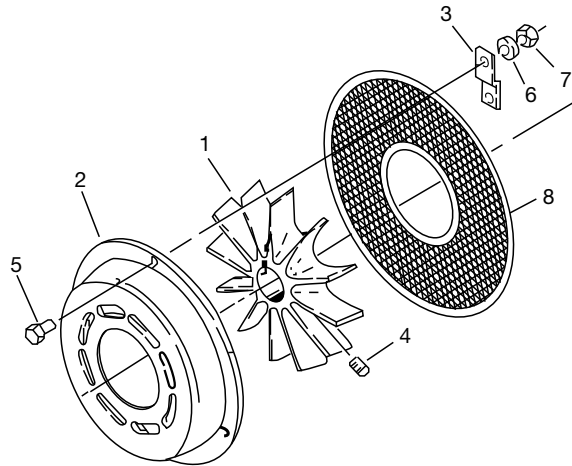


Figure 2 - Fan Blade Safety Screen Placement

**BALDOR • DODGE®**

## Replacement Parts For Cooling Fan



Reference	Description	Qty Required	Part Numbers					
			TXT505A	TXT5C	TDT6, TXT6A	TDT7, TXT7A	TDT8, TXT8A	TDT9, TXT9A
	Cooling Fan Assembly ①	1	255231	272369	272325	272326	272327	272328
1	② Fan Blade	1	255232	272415	272334	272335	272335	272336
2	② Fan Shroud	1	255233	272422	272344	272346	272346	272347
3	② Mounting Strap	③	255234	245636	272353	272354	272355	272356
4	② Set Screw	2	400026	400026	400026	400086	400086	400094
5	② Cap Screw	③	411394	411394	411409	411409	411409	411407
6	② Lockwasher	③	419009	419009	419011	419011	419011	419011
7	② Hex Nut	1	407083	407083	407087	407087	407087	407087
8	Safety Screen	1	-	-	242750	242751	242751	242753
9	② Bracket	④	255235	255235	-	-	-	-
10	② Bracket Screw	④	411022	411022	-	-	-	-
11	② Lock Washer	④	419077	419077	-	-	-	-
12	② Fan Key	1	443112	443112	-	-	-	-
13	② Shaft Key	1	443094	443094	-	-	-	-

Reference	Description	Qty Required	Part Numbers					
			TDT10, TXT10A	TDT12, TXT12	TDT13	TDT14	TDT15	T19
	Cooling Fan Assembly	1	272329	272330	272331	272332	272333	272324
1	② Fan Blade	1	272337	272337	272338	272338	272339	272335
2	② Fan Shroud	1	272347	272347	272348	272348	272348	272346
3	② Mounting Strap	③	272356	272357	272361	272358	272359	272360
4	② Set Screw	2	400090	400090	400154	400154	400146	400086
5	② Cap Screw	③	411407	411407	411407	411407	411407	411409
6	② Lockwasher	③	419011	419011	419011	419011	419011	419011
7	② Hex Nut	1	407087	407087	407087	407087	407087	407087
8	Safety Screen	1	242753	242753	242756	242756	242756	242753
9	② Bracket	④	-	-	-	-	-	-
10	② Bracket Screw	④	-	-	-	-	-	-
11	② Lock Washer	④	-	-	-	-	-	-
12	② Fan Key	1	-	-	-	-	-	-
13	② Shaft Key	1	-	-	-	-	-	-

① Assembly includes parts listed immediately below.

② Included in assemblies under which they are listed.

③ 2 required on size TXT505A; 3 required on sizes TXT5B, TDT6 & 7; 4 required on sizes TDT8 – 15 & T19.

④ 2 required on size TXT505A; 3 required on size TXT5B.



P.O. Box 2400, Fort Smith, AR 72902-2400 U.S.A., Ph: (1) 479.646.4711, Fax (1) 479.648.5792, International Fax (1) 479.648.5895

**Dodge Product Support**

6040 Ponders Court, Greenville, SC 29615-4617 U.S.A., Ph: (1) 864.297.4800, Fax: (1) 864.281.2433

[www.baldor.com](http://www.baldor.com)

© Baldor Electric Company  
MN1635 (Replaces 499365)



All Rights Reserved. Printed in USA.  
7/12 Printshop 1000