

| | | | | | |
|-----|--|------|----------|--------------|----------|
| | | | Draw | Barbarani R. | 08.03.21 |
| | | | Checked | Balbiano C. | 08.03.21 |
| ECN | | Name | Revision | 1 | 3.12.14 |



Power Protection
6572–Quartino, Switzerland

Mechanical Outline

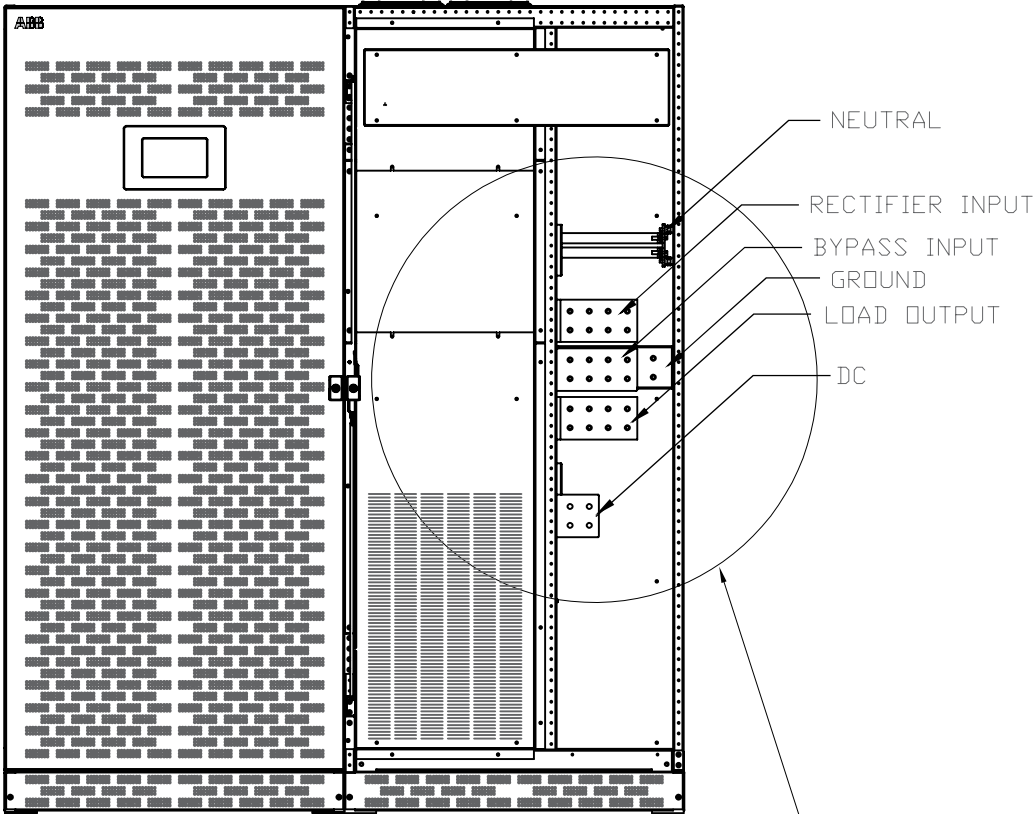
TLE 500 kW UL
with eBOOST technology

Product Upgrade Letter: A

Series: 2

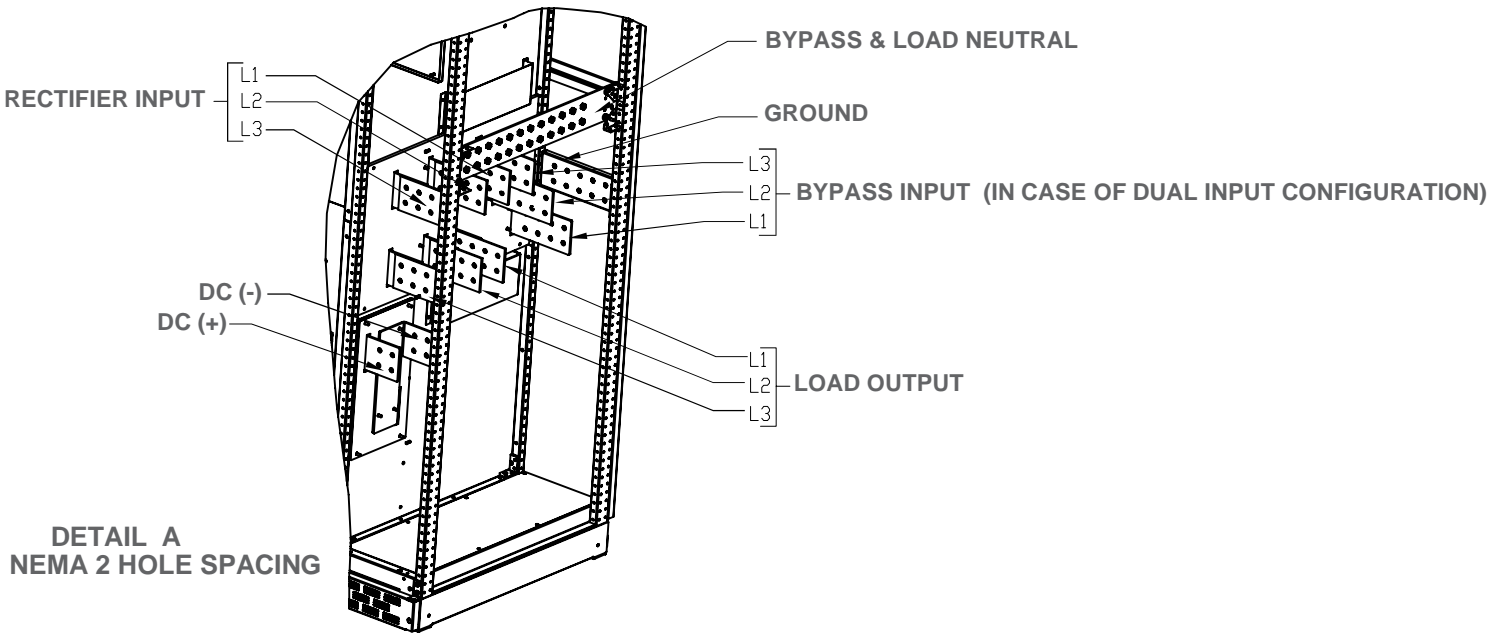
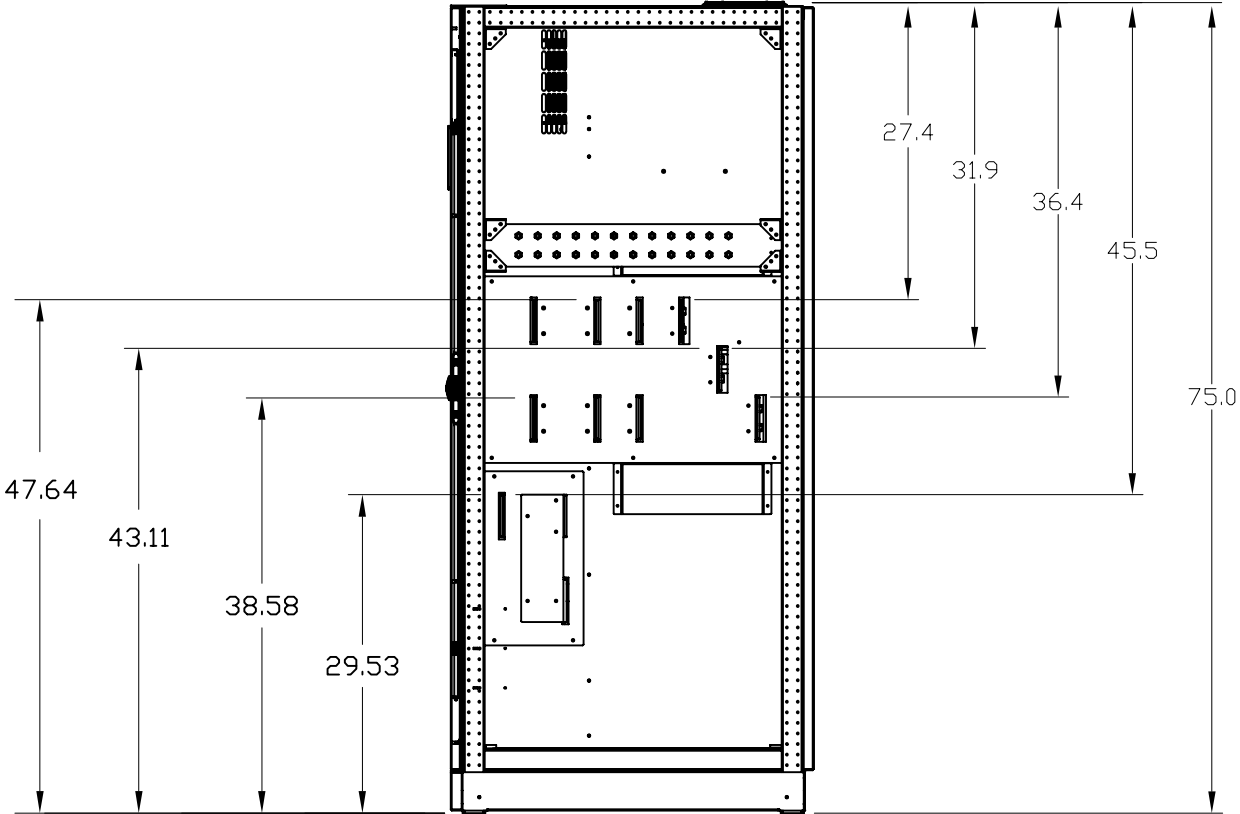
0001050348

FRONT VIEW WITH
SAFETY PANEL REMOVED



DETAIL A

SIDE VIEW WITH
SAFETY PANEL REMOVED



DETAIL A
NEMA 2 HOLE SPACING

Maximum Allowed Cable Configuration

| kW | Rectifier Input | Bypass Input | DC Input | Output (Load) | GND |
|-----|-----------------|---------------|---------------|---------------|-------------|
| 500 | 4 x 350 Kcmil | 4 x 300 Kcmil | 4 x 600 Kcmil | 4 x 300 Kcmil | 1 x 3/0 AWG |

* Actual cable size and quantity must be based on the requirements of NFPA 70 and must not exceed the limits listed above.

| | | | | | |
|-----|--|------|----------|--------------|----------|
| | | | Draw | Barbarani R. | 25.03.20 |
| | | | Checked | Balbiano C. | 25.03.20 |
| ECN | | Name | Revision | 1 | 25.03.20 |



Power Protection
6572-Quartino, Switzerland

Mechanical Outline

TLE 500 kW UL
with eBOOST technology

Product Upgrade Letter: A

Series: 2 0001050348

Page 2
of 2