



There's a switch that fits

ABB Enclosed Rotary Switches

1SQC920004N0201

ABB



For OEMs, switches are a small part of a much bigger picture



Customers expect better safety and greater reliability

The biggest priority? Keeping assets and people protected.



You're required to manage multiple complex projects

With thousands of components from a variety of suppliers.



There's pressure to meet higher targets and KPIs

Requiring faster lead times, durable, innovative solutions, enhanced productivity, maximized uptime.

For the HVAC industry, switches are part of a much bigger picture



Customers expect better safety and greater reliability

The biggest priority? Keeping assets and people protected at all times.



There's increased demand for innovative solutions

With production footprint at a premium, demand for compact, ductless units is rising.



You're required to manage multiple complex projects

With thousands of components from a variety of suppliers.



There's pressure to meet higher targets and KPIs

Requiring faster lead times, and reliable, scalable solutions to enhance productivity.

So let's look at the bigger picture

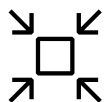
At ABB, we believe in making it easy to



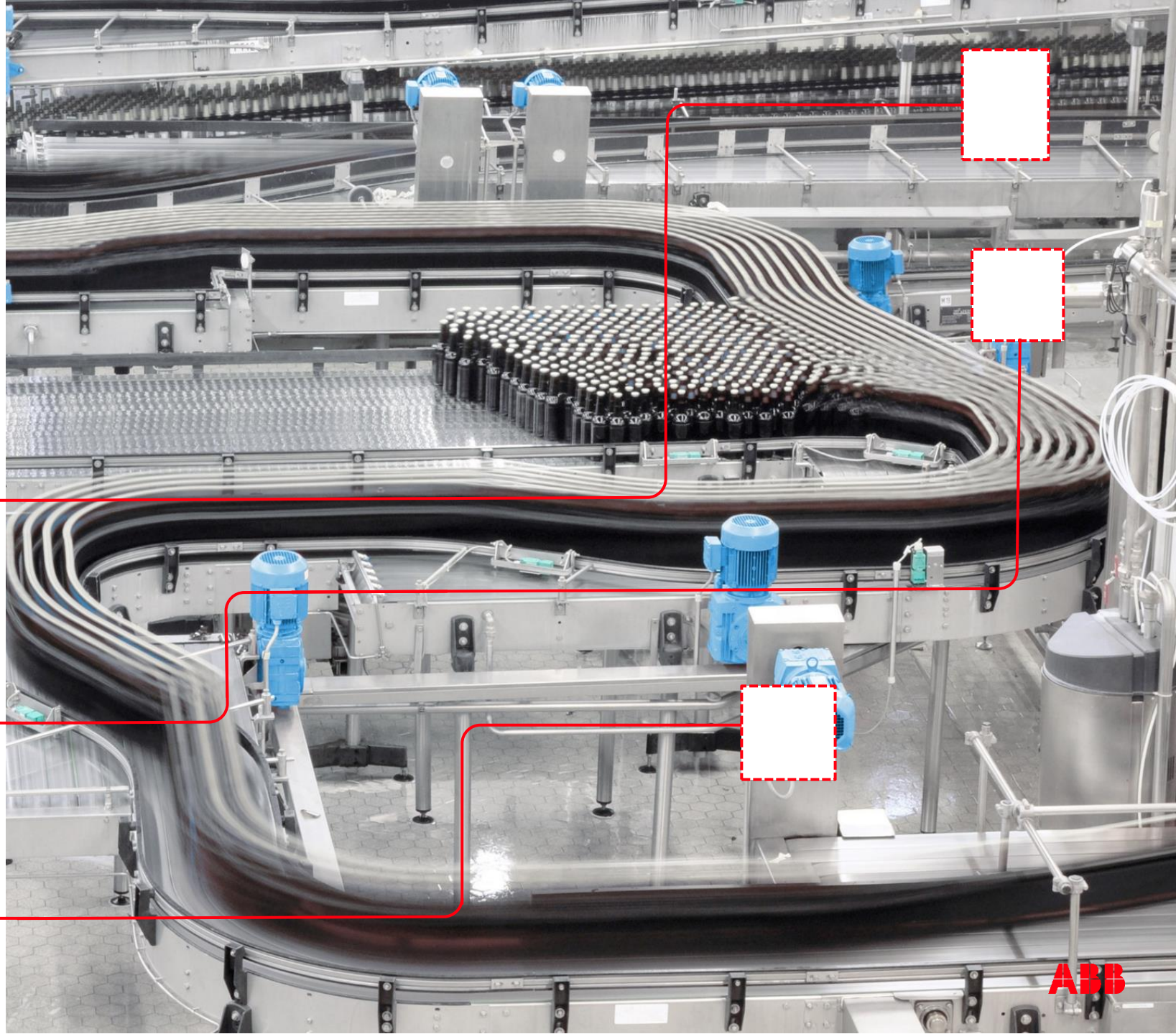
Meet demanding standards for relentless uptime and stronger safety



Find the right fit for every part of every project



Design more efficiently, with compact switches that fit the tightest of spaces



**Introducing the
expanded range**

ABB Enclosed Rotary Switches



Find the right fit to protect your people and your assets

With our Enclosed Rotary Switch range, it's never been simpler to integrate, protect and enhance your customers' system.

Up to
40% smaller footprint
compared to market
equivalent

Reliable circuit
protection

Simple operation
and maintenance



Expanded technical specifications

Whether you're designing for the harshest environmental conditions or the smallest of spaces, there's a switch that fits.



Relentless uptime?

There's a switch for that



Premium performance

- Exceptional mechanical endurance for longer lifecycles
- Optimized for reliable, maintenance-free operation
- High 100 kA short-circuit current rating



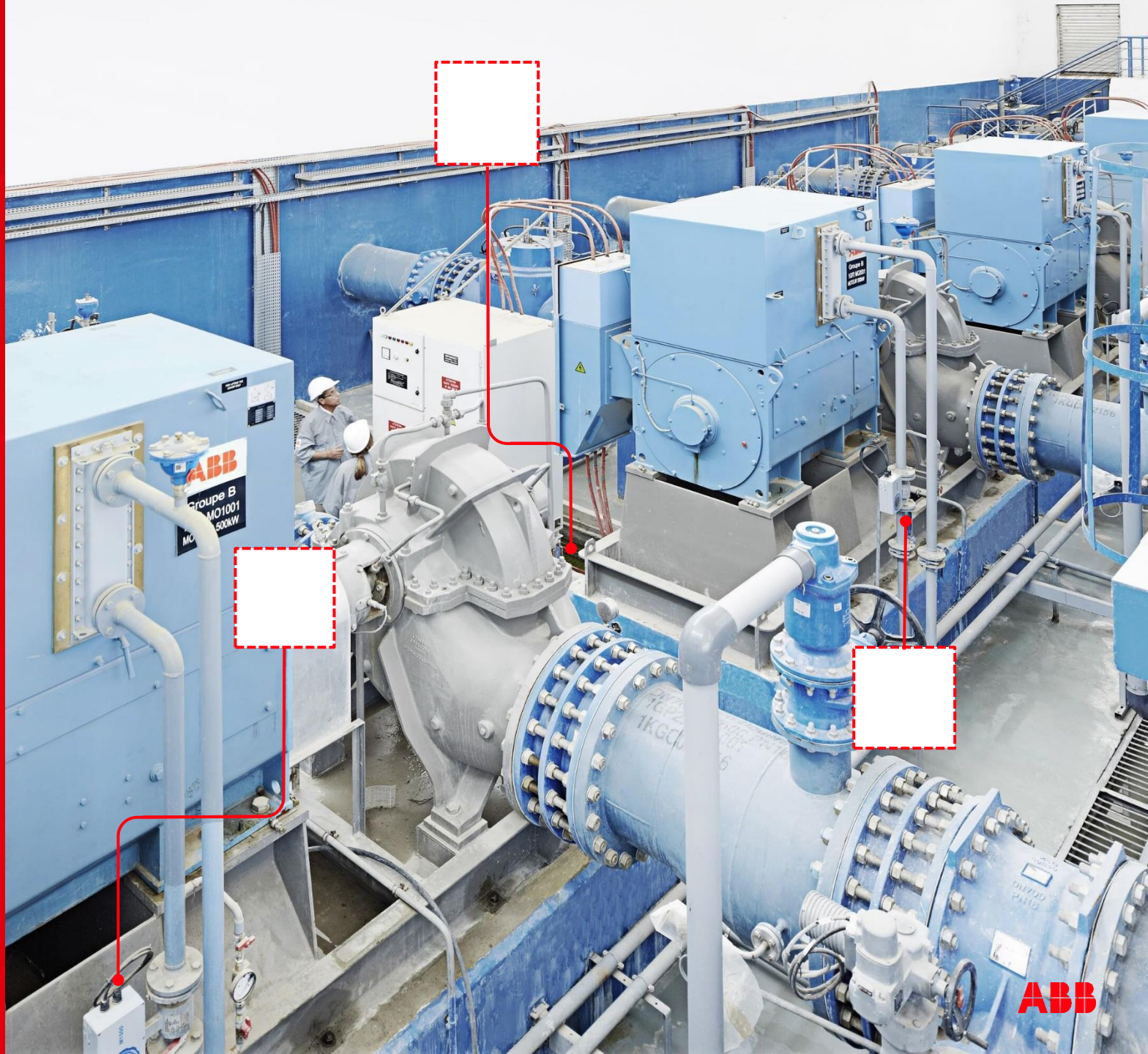
Enhanced safety

- UL508 and UL98 certification
- Machine safety standard NFPA 70 / NEC
- Easy-to-read on / off position
- Accommodates up to 3 safety padlocks



Quality assurance

- Factory assembled and tested to ABB's highest performance standards
- Ensure a complete solution with ABB's broad accessory and solution portfolio



Diverse applications?

There's a switch that fits

HVAC

Data centers, commercial applications

Common switch applications

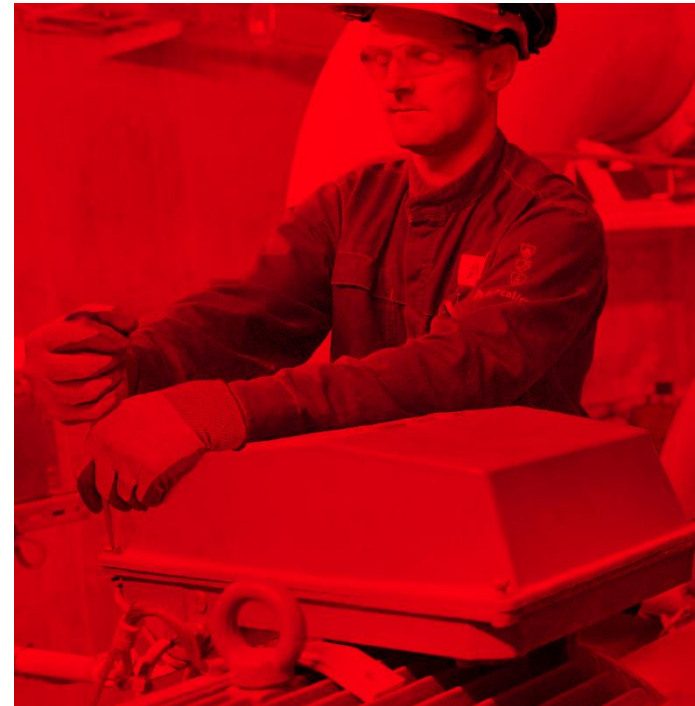
Isolator, maintenance or emergency shut down for: heaters, fans, coolers, chillers and outdoor units

Your challenges

- Wide range of applications and current requirements
- Wear and tear due to outdoor applications and environmental conditions

The switch that fits

- New range now covers broader 20A - 600A ratings
- 3 and 6 pole options
- More rugged enclosures - plastic and stainless steel for outdoor applications in harsh environments and steel for indoor applications



Diverse applications?

There's a switch that fits

Material handling

**E-commerce and warehouse,
automotive, food and beverage**

Common switch applications

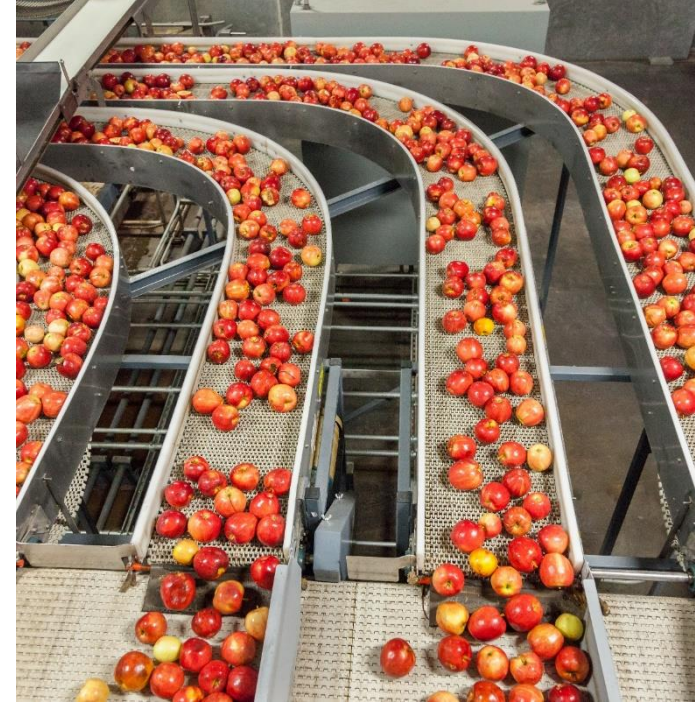
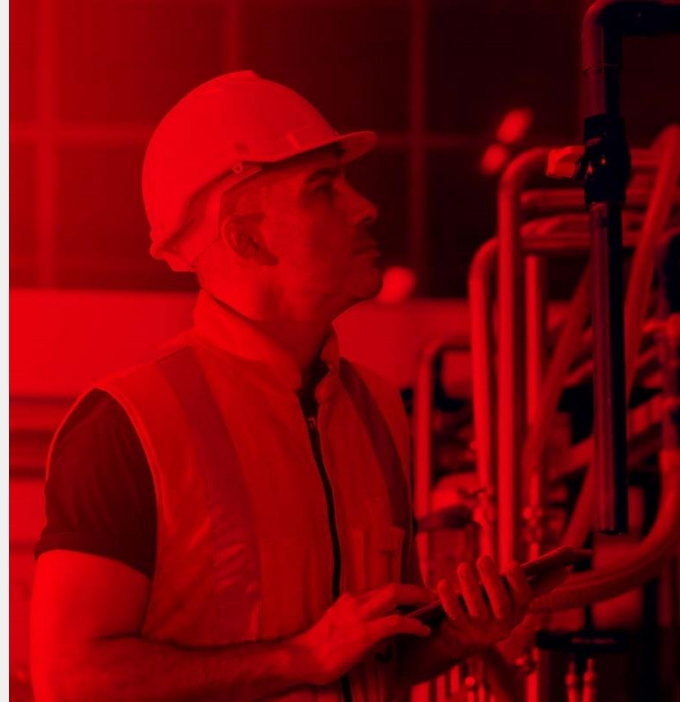
Main circuit disconnecter, heavy machinery, motors, conveyor belts, food processing system, hydraulic lifts and elevators

Your challenges

- Wide range of applications and current requirements
- Auxiliary contacts required
- Safety handle color-coding to meet local regulations
- Rugged plastic and steel enclosures in compliance with strict safety standards

There's a switch that fits

- Our switches now cover 20A - 600A ratings with 3 and 6 pole options
- Innovative snap-on auxiliary contacts for faster installation
- Safety handles available in a range of color options
Plastic/steel NEMA 4X enclosure now available



Diverse applications?

There's a switch that fits

Water and wastewater

Irrigation, water and wastewater treatment

Common switch applications

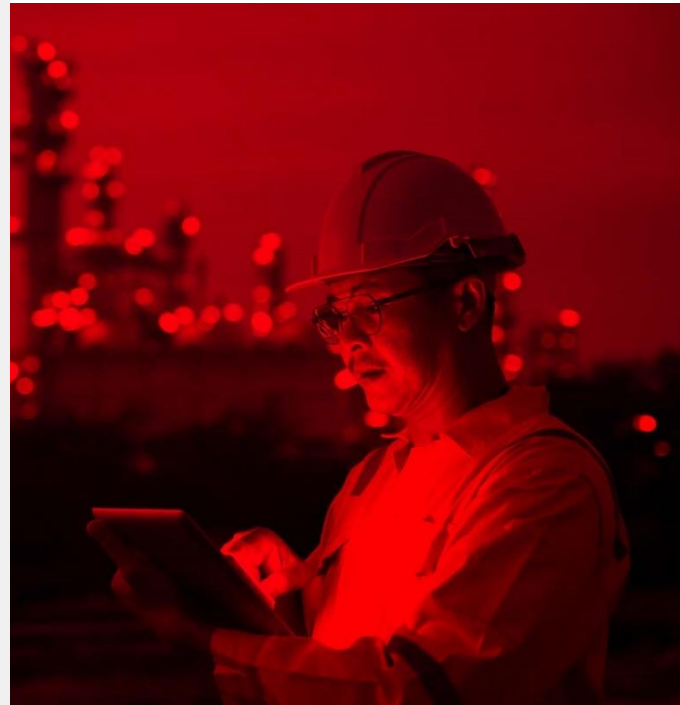
Isolator, maintenance or emergency shut down for compressors, blowers and pumps

Your challenges

- Wide range of applications and current requirements
- Wear and tear due to outdoor applications in harsh environmental conditions
- Auxiliary contacts required
- Safety handle color-coding requirements

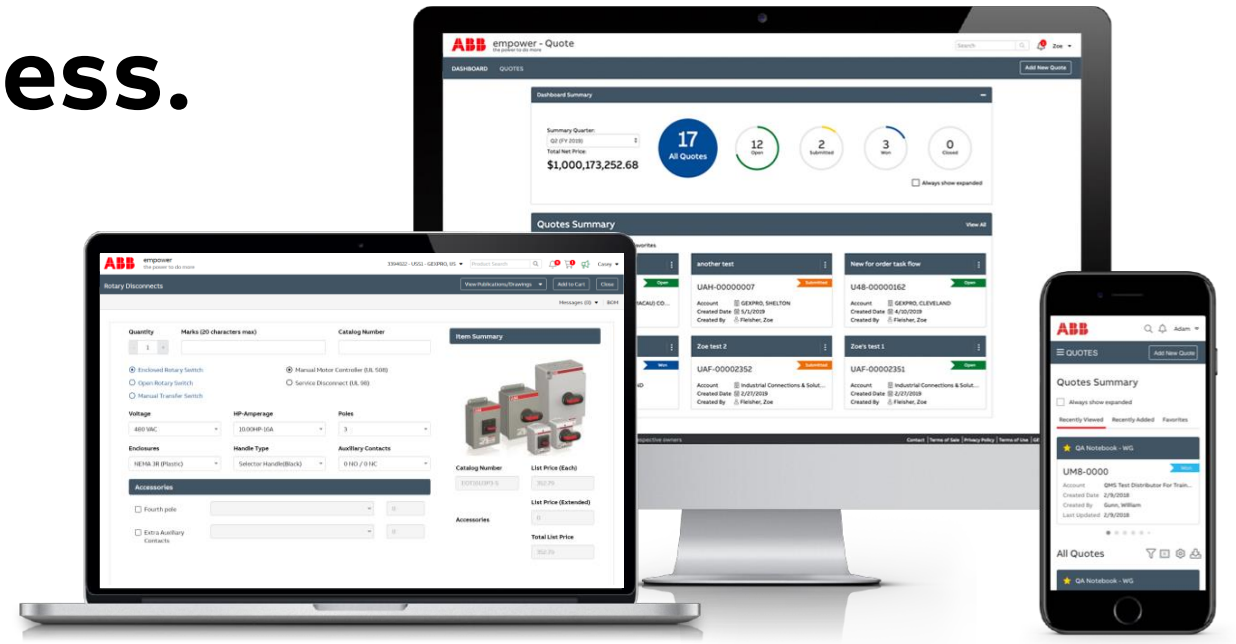
There's a switch that fits

- New range now covers broader 20A - 600A ratings
- Innovative snap-on auxiliary contacts for faster installation
- Safety handles available in a range of color options
More rugged enclosures - plastic and stainless steel for outdoor applications in harsh environments and steel for indoor applications



Design should be effortless. Just add ABB.

Simple configuration, ordering and logistics with ABB's online platform - empower



Choose the right products every time

empower's online selection tool simplifies product purchases and offers fast access to product specifications.



Streamlined project management

Speed up design from end-to-end with downloadable technical drawings and product data.

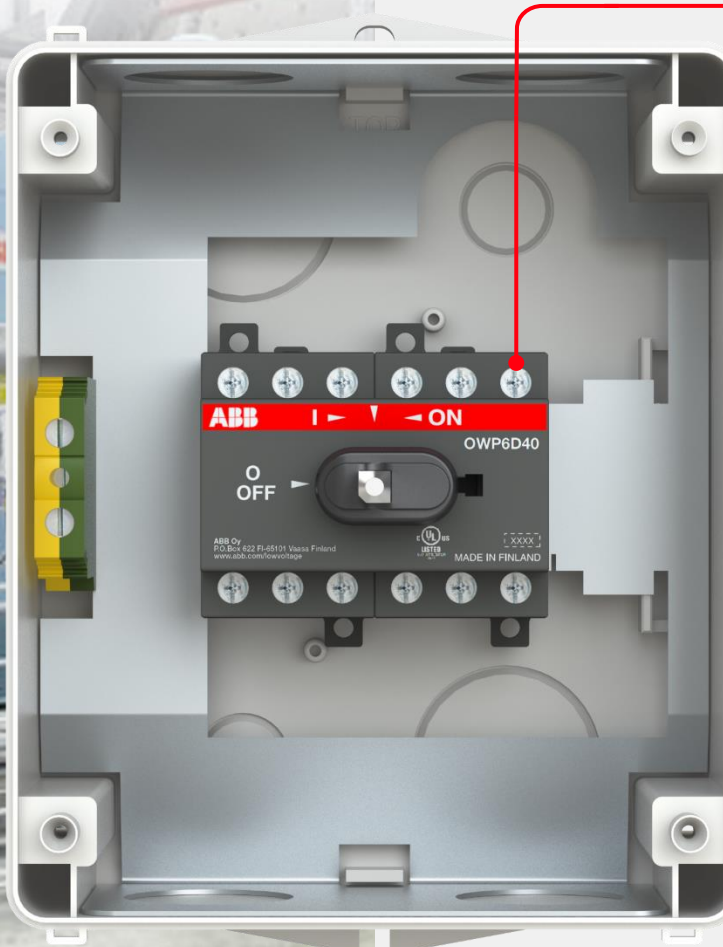


Faster distribution

>80% of our customer base served in a two-day window, thanks to our Mount Juliet facility in Tennessee.

Design should be effortless

Faster, simpler integration



Installation-ready thanks to factory-installed components

Metallic base plate eliminates need for extra conduit jumpers

Sealed, water-tight enclosure for hose-down environments (type 4/4X only)

Touch-safe construction

Technical specifications

UL508 eOT Enclosed Rotary Switches

Non-fusible



Rating:

- 20 A, 30 A, 40 A, 60 A, 80 A
- 3 and 6 pole
- 3-pole changeover



Enclosure options

- Metal — NEMA 3R / 12
- Stainless steel and plastic — NEMA 4 / 4X



Handle

- Selector or pistol
- Colors: Black or red/yellow



Accessories

- Auxiliary contacts, replacement handles, terminal shrouds

UL98 eOT Enclosed Rotary switches

Non-fusible



Rating:

- 30 A, 60 A, 100 A, 200 A, 400 A, 600 A
- 3, 4 and 6-pole options
- 3-pole changeover



Enclosure options

- Metal: NEMA 1, 3R / 12
- Stainless steel and plastic : NEMA 4 / 4X



Handle

- Selector or pistol
- Colors: Black or red/yellow



Accessories

- Auxiliary contacts, replacement handles, terminal shrouds

UL98 eOS Enclosed Rotary Switches

Fusible



Rating:

- 30 A, 60 A, 100 A, 200 A, 400 A, 600 A
- 3 pole
- Fuse class: CC / J



Enclosure options

- Metal: NEMA 1, 3R / 12
- Stainless steel and plastic : NEMA 4 / 4X



Handle

- Selector or pistol
- Colors: Black or red/yellow



Accessories

- Auxiliary contacts, replacement handles, terminal shrouds

There's a switch that fits

Let's find the ABB Enclosed Rotary Switch that works for your project



Talk to us

ABB