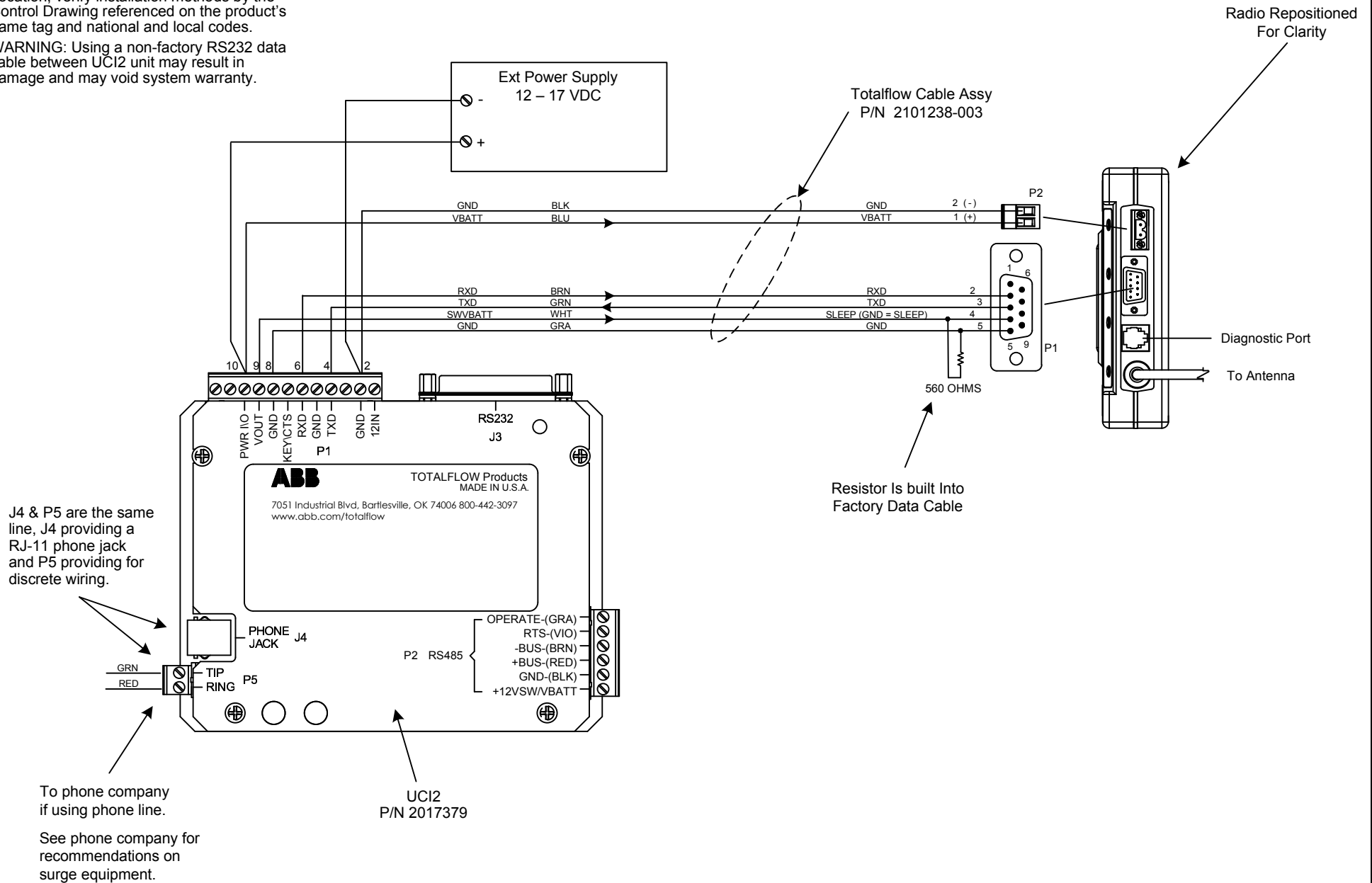


NOTES:

1. WARNING: This drawing does not illustrate completely the installation methods required for hazardous locations. Prior to any installation in a Classified Hazardous Location, verify installation methods by the Control Drawing referenced on the product's name tag and national and local codes.
2. WARNING: Using a non-factory RS232 data cable between UC12 unit may result in damage and may void system warranty.



REF: N/A

	TOTALFLOW	ACTION	DOC TYPE	TITLE	DWG NO.	REV	SHEET
	Products	L19084	UD	UC12 W/EXT CONTINUOUS PWR TO MDS TRANSNET 900 RADIO (RS-232)	2102915	AA	1 OF 1