

INSTRUCTION MANUAL
MAGNETIC FLOWMETERS
10D1475 Design Levels H & J
Sizes 1/10 through 4 Inches



MINI-MAG[®] MAGNETIC FLOWMETER



PN24940

The following are registered trademarks of ABB Automation:

MAG-X[®]
MINI-MAG[®]
COPA-XE[®]

The following is a trademark of ABB Automation:

MICRO-DCI

The following are registered trademarks of DuPont:

TEFLON[®]
TEFZEL[®]

The following is a trademark of Haynes International Incorporated:

HASTELLOY

The following is a trademark of Richard Klinger, Incorporated:

KLINGER SIL C-4401

The following is a registered trademark of the HART Communications Foundation:

HART

WARNING notices as used in this manual apply to hazards or unsafe practices which could result in personal injury or death.

CAUTION notices apply to hazards or unsafe practices which could result in property damage.

NOTES highlight procedures and contain information which assist the operator in understanding the information contained in this manual.

All software, including design, appearance, algorithms and source codes, is owned and copyrighted by ABB Automation and is owned and copyrighted by ABB Automation or its suppliers.

WARNING

POSSIBLE PROCESS UPSETS

Maintenance must be performed only by qualified personnel and only after securing equipment controlled by this product. Adjusting or removing this product while it is in the system may upset the process being controlled. Some process upsets may cause injury or damage.

NOTICE

The information contained in this document is subject to change without notice.

ABB Automation, its affiliates, employees, and agents, and the authors of and contributors to this publication specifically disclaim all liabilities and warranties, express and implied (including warranties of merchantability and fitness for a particular purpose), for the accuracy, currency, completeness, and/or reliability of the information contained herein and/or for the fitness for any particular use and/or for the performance of any material and/or equipment selected in whole or part with the user of/or in reliance upon information contained herein. Selection of materials and/or equipment is at the sole risk of the user of this publication.

This document contains proprietary information of ABB Automation, and is issued in strict confidence. Its use, or reproduction for use, for the reverse engineering, development or manufacture of hardware or software described herein is prohibited. No part of this document may be photocopied or reproduced without the prior written consent of ABB Automation.

Table of Contents

SAFETY SUMMARY	I
READ FIRST	V
1.0 INTRODUCTION	1-1
1.1 General	1-1
1.2 Functional Description	1-2
1.2.1 Basic Operating Principle	1-3
1.2.1.1 Signal Voltage Generation	1-3
1.2.1.2 Magnet Coil Drive Circuits	1-3
1.2.1.3 Volumetric Flow Rate Measurement	1-4
1.2.2 Operating Characteristics	1-4
1.2.2.1 Liquid Variables	1-4
1.2.2.1.1 Liquid Conductivity	1-4
1.2.2.1.2 Liquid Temperature	1-5
1.2.2.1.3 Other Liquid Variables	1-6
1.2.2.2 Metering Characteristics	1-6
1.3 Model Number Breakdown	1-7
1.4 Specifications	1-10
2.0 INSTALLATION	2-1
2.1 Inspection	2-1
2.2 Location	2-1
2.3 Mounting	2-2
2.3.1 Meter Orientation	2-2
2.3.2 Meter Handling	2-2
2.3.3 Pipe Connections	2-6
2.3.4 Gaskets	2-7
2.3.5 Basic Mounting Procedure	2-8
2.4 Grounding Procedure	2-9
2.4.1 General	2-9
2.4.2 Conductive Pipeline	2-9
2.4.3 Non-Conductive or Insulated Pipeline	2-11
2.5 Electrical Interconnections	2-13
2.6 Conduit Seal and Pressure Relief	2-13
3.0 START-UP	3-1
3.1 Preliminary Check List	3-1
3.2 Turn Power On	3-2
3.3 Zero Check	3-2
3.4 Detector Empty Pipe (option)	3-2
3.5 Start Process Flow	3-2
3.6 EEPROM	3-2

4.0 CIRCUIT DESCRIPTION	4-1
4.1 Model 10D1475J	4-1
4.1.1 Primary Signals	4-1
4.1.2 Constant Meter Capacity (CMC) PC Assembly	4-1
4.2 Model 10D1475H	4-2
4.2.1 Primary Signals	4-2
4.2.1.1 Systems With Integrated M2 Signal Converters	4-2
5.0 MAINTENANCE	5-1
5.1 General	5-1
5.2 System Troubleshooting	5-2
5.3 Static Test	5-3
5.3.1 Magnet Coil Check	5-3
5.3.2 Electrode Check	5-4
5.3.3 Flowmeter Board	5-4
6.0 PARTS	6-1
6.1 Grounding Rings	6-1
6.2 Gaskets	6-1
6.3 Adapter Sleeves	6-2
6.4 Studs & Nuts	6-3
6.5 Cable Entry Seals	6-3
6.5.1 Conduit Entry Seal	6-3
6.5.2 Cable Entry Seal	6-3

List of Figures

FIGURE 1-1. INTEGRAL FLOWMETER	1-1
FIGURE 1-2. REMOTE w/ 2-PC BOX	1-2
FIGURE 1-3. REMOTE w/ EXPLOSION PROOF BOX	1-2
FIGURE 1-4. BASIC OPERATING PRINCIPLE	1-3
FIGURE 2-1. OUTLINE DIMENSIONS OF FLOWMETER WITH INTEGRAL SIGNAL CONVERTER ..	2-3
FIGURE 2-2. OUTLINE DIMENSIONS OF REMOTE FLOWMETER WITH 2-PIECE BOX	2-4
FIGURE 2-3. OUTLINE DIMENSIONS OF REMOTE FLOWMETER WITH EXPLOSION-PROOF BOX	2-5
FIGURE 2-4. RECOMMENDED PIPING ARRANGEMENT	2-6
FIGURE 2-5. BOLT TIGHTENING SEQUENCE	2-7
FIGURE 2-6. METER MOUNTING DIAGRAM	2-8
FIGURE 2-7. GROUNDING PROCEDURE, CONDUCTIVE PIPE	2-10
FIGURE 2-8. OUTLINE DIMENSIONS, GROUNDING RINGS	2-11
FIGURE 2-9. GROUNDING PROCEDURE, NON-CONDUCTIVE or INSULATED PIPE	2-12
FIGURE 2-10. CONDUIT ENTRY SEAL INSTALLATION	2-13
FIGURE 3-1. TYPICAL INTEGRAL PRIMARY 10D1475H DATA TAG	3-1
FIGURE 3-2. TYPICAL REMOTE PRIMARY 10D1475H & J DATA TAG	3-1
FIGURE 3-3. INTEGRALLY MOUNTED ENCLOSURE WITHOUT CONVERTER MODULE	3-3
FIGURE 3-4. PRIMARY PCB ASSEMBLY IN 2-PC HOUSING	3-4
FIGURE 3-5. CONTINUOUS SUBMERGENCE PRIMARY CONNECTIONS FOR REMOTE MOUNTED SIGNAL CONVERTERS	3-5
FIGURE 4-1. LOCATION OF OPTION JUMPERS (686B776___ BOARD ASSEMBLY)	4-3

List of Tables

TABLE 1-1. ELECTRODE DIAMETERS	1-5
TABLE 1-2. METER CAPACITY	1-10
TABLE 1-3. METER WEIGHTS	1-12
TABLE 4-1. TERMINAL FUNCTION vs. JUMPER SETTINGS	4-2
TABLE 5-1. PRIMARY COIL RESISTANCE	5-3
TABLE 6-1. ANSI CLASS 150 GROUNDING RINGS	6-1
TABLE 6-2. GASKETS FOR ANSI CLASS 150 GROUNDING RINGS	6-1
TABLE 6-4. ADAPTER SLEEVE	6-2
TABLE 6-3. GASKETS FOR METER BODY	6-2
TABLE 6-5. STUDS & NUTS	6-3

SAFETY SUMMARY

GENERAL WARNINGS

POSSIBLE PROCESS UPSETS. Maintenance must be performed only by qualified personnel and only after securing equipment controlled by this product. Adjusting or removing this product while it is in the system may upset the process being controlled. Some process upsets may cause injury or damage.

RETURN OF EQUIPMENT. All Flowmeters and/or Signal Converters being returned to Bailey-Fischer & Porter for repair must be free of any hazardous materials (acids, alkalis, solvents, etc.). A Material Safety Data Sheet (MSDS) for all process liquids must accompany returned equipment. Contact Bailey-Fischer & Porter for authorization prior to returning equipment.

INSTRUCTION MANUALS

Do not install, maintain or operate this equipment without reading, understanding and following the proper Bailey-Fischer & Porter instructions and manuals, otherwise injury or damage may result.

ELECTRICAL SHOCK HAZARD

Equipment powered by AC line voltage presents a potential electric-shock hazard to the user. Make certain that the system power is disconnected from the operating branch circuit before attempting electrical interconnections or service.

SPECIFIC WARNINGS

All flowmeters and/or signal converters being returned to Bailey-Fischer & Porter for repair must be free of any hazardous materials (acids, alkalis, solvents, etc). A Material Safety Data Sheet (MSDS) for all process liquids must accompany returned equipment. Contact Bailey-Fischer & Porter for authorization prior to returning equipment. (pg. V, 4-1)

ELECTRICAL SHOCK HAZARD. Equipment powered by AC line voltage presents a potential electric shock hazard to the user. Make certain that the system power input leads are disconnected from the operating branch circuit before attempting electrical interconnections. (pg. 2-16)

ELECTRICAL SHOCK HAZARD. Equipment powered by an AC line voltage presents a potential electric shock hazard. Servicing of the Magnetic Flowmeter or Signal Converter should only be attempted by a qualified electronics technician. (pg. 3-2, 4-2)

ELECTRICAL SHOCK HAZARD. Equipment that operates from ac line voltage constitutes a potential electric shock hazard to the user. Make certain that the system power is disconnected before making the following ohmmeter checks. (pg. 4-3)

**SPECIFIC
CAUTIONS**

Do not use graphite gaskets. Under certain conditions they may cause an electrically conductive layer to form on the inside wall of the meter, causing meter operation to degrade. (pg. 2-8)

Some of the IC devices used in the signal converter are static sensitive and may be damaged by improper handling. When adjusting or servicing the signal converter, use of a grounded wrist strap is recommended to prevent inadvertant damage to the integral solid state circuitry. (pg. 4-1)

**GÉNÉRAUX
AVERTISSEMENTS**

PROBLÈMES POTENTIELS. La maintenance doit être réalisée par du personnel qualifié et seulement après avoir sécurisé les équipements contrôlés par ce produit. L'ajustement ou le démontage de ce produit lorsqu'il est lié au système peut entraîner des dysfonctionnements dans le procédé qu'il contrôle. Ces dysfonctionnements peuvent entraîner des blessures ou des dommages.

RETOUR D'ÉQUIPEMENT. Tout débitmètre et(ou) convertisseur retourné à Bailey-Fischer & Porter pour réparation doit être exempt de toute trace de produit dangereux (acide, base, solvant, ...). Un certificat de sécurité matériel doit être joint pour tous les liquides utilisés dans le procédé. Contacter Bailey-Fischer & Porter pour autorisation avant renvoi du matériel.

MANUEL DE MISE EN ROUTE. Ne pas installer, maintenir ou utiliser cet équipement sans avoir lu, compris et suivi les instructions et manuels de Bailey-Fischer & Porter, dans le cas contraire il y a risque d'entraîner blessures ou dommages.

RISQUE DE CHOC ÉLECTRIQUE

Les équipements alimentés en courant alternatif constituent un risque de choc électrique potentiel pour l'utilisateur. Assurez-vous que les câbles d'alimentation amont sont déconnectés avant de procéder à des branchements, des essais ou tests.

**SPÉCIFIQUES
AVERTISSEMENTS**

Tout débitmètre et(ou) convertisseur retourné à Bailey-Fischer & Porter pour réparation doit être exempt de toute trace de produit dangereux (acide, base, solvant, ...). Un certificat de sécurité matériel doit être joint pour tous les liquides utilisés dans le procédé. Contacter Bailey-Fischer & Porter pour autorisation avant renvoi du matériel. (pg. V, 4-1)

RISQUE DE CHOC ÉLECTRIQUE

Les équipements alimentés en courant alternatif constituent un risque de choc électrique potentiel pour l'utilisateur. Assurez-vous que les câbles d'alimentation amont sont déconnectés avant de procéder à des branchements, des essais ou tests. (pg. 2-16)

RISQUE DE CHOC ÉLECTRIQUE

Les équipements alimentés en courant alternatif constituent un risque de choc électrique potentiel. La maintenance sur des équipements électromagnétiques ou des convertisseurs doit être effectuée par des techniciens qualifiés. (pg. 3-2, 4-2)

RISQUE DE CHOC ÉLECTRIQUE

Les équipements alimentés en courant alternatif constituent un risque de choc électrique potentiel. Assurez-vous que la puissance est déconnectée avant de procéder aux mesures de résistance suivantes. (pg 4-3)

**SPÉCIFIQUES
ATTENTIONS**

N'utilisez pas les garnitures de graphite. Dans certaines conditions elles peuvent causer une couche électriquement conductrice à la forme sur le mur intérieur du mètre, faisant dégrader l'exécution de mètre. (pg. 2-8)

Certains Circuits Intégrés utilisés dans le convertisseur sont sensibles à l'électricité statique et peuvent être endommagés par une mauvaise manipulation. Pendant l'ajustement ou la maintenance d'un convertisseur, l'utilisation d'un bracelet antistatique est recommandé pour éviter la destruction par inadvertance d'un circuit intégré. (pg. 4-1)

READ FIRST

WARNING

INSTRUCTION MANUALS

Do not install, maintain, or operate this equipment without reading, understanding and following the proper Bailey-Fischer & Porter instructions and manuals, otherwise injury or damage may result.

RETURN OF EQUIPMENT

All Flowmeters and/or Signal Converters being returned to Bailey-Fischer & Porter for repair must be free of any hazardous materials (acids, alkalis, solvents, etc). A Material Safety Data Sheet (MSDS) for all process liquids must accompany returned equipment. Contact Bailey-Fischer & Porter for authorization prior to returning equipment.

NEMA 4X, Corrosion Resistant Finish

This product is painted with a high performance epoxy paint. The corrosion protection provided by this finish is only effective if the finish is unbroken. It is the users' responsibility to "touch-up" any damage that has occurred to the finish during shipping or installation of the product. Special attention must be given to: meter flange bolting, pipe mounting of electronics, conduit entries and covers that are removed to facilitate installation or repair. For continued corrosion protection throughout the product life, it is the users' responsibility to maintain the product finish. Incidental scratches and other finish damage must be repaired and promptly re-painted with approved touch-up paint. Provide the model number and size of your product to the nearest Bailey-Fischer & Porter representative to obtain the correct touch-up paint.

**Read these instructions before starting installation;
save these instructions for future reference.**

The NEMA 4X rating applies to the meter body and electronics enclosure only. The following accessories (if supplied) may not meet NEMA 4X unless specifically ordered as NEMA 4X:

- meter installation hardware: studs, nuts, bolts
- enclosure mounting hardware for pipe or wall mounting
- conduit hardware

1.0 INTRODUCTION

1.1 General

The Bailey-Fischer & Porter Series 10D1475 MINI-MAG[®] Magnetic Flowmeter is an electromagnetic liquid flow rate detector. The meter uses the characteristics of a conductive liquid to generate an induced voltage, directly proportional to flow rate, as the liquid passes internal electrodes. The resultant voltage is applied to a solid state electronics package that conditions it to an output signal compatible with conventional receiving equipment.

This instruction bulletin describes two magmeter models. The Models are differentiated by the type of Converter used with the Primaries as follows:

- 10D1475H - M2 Converter (Integral & Remote Primary versions)
- 10D1475J - 50XM1000 Converter (Remote Primary version only)

The meter's design provides a compact, very low power, obstructionless primary metering element that bolts between flanges in a process pipeline. Pressure losses in this type of meter are reduced to levels occurring in equivalent lengths of equal diameter pipeline, thus reducing or conserving pressure source requirements as compared to other metering methods. The compact size of the meter results in a light-weight unit that requires no additional support other than that used normally on pipe runs.

This Flowmeter can be used to meter either clean or dirty liquids. The meter may be used with many non-homogeneous liquids and is as independent of the tendency to plug or foul as the pipeline in which it is mounted. By design, only the liner and electrodes are wetted parts and will accommodate most acids, bases, water and aqueous solutions.

Viscosity and density of the metered liquid have no effect on the measurement accuracy of the meter and, therefore, signal compensation is not required. Metering limitations are confined to a minimum threshold of electrical conductivity inherent to the liquid being metered. The degree of liquid conductivity has no effect upon the metering accuracy (as long as it is greater than the minimum level). The liquid temperature and pressure are limited only to the meter material specification limit.



FIGURE 1-1. INTEGRAL FLOWMETER

With the exception of the primary board, the meter body is a sealed section that bolts between the customer's pipe line flanges. The body has a TEFZEL[®] (ETFE) liner which is turned out against the flange faces. The measuring electrodes that contact the process liquid have their ends flush with the inside of the liner. For accurate results, the meter bore diameter must be centered in the pipeline. For the larger size meters, spacer sleeves are slipped over the flange mounting bolts. The smaller size meters use a unique centering device (called a flange adaptor) to center the meter.

The associated electronics package is called the Signal Converter and may be either integrally or remotely mounted. A typical integral MINI-MAG Magnetic Flowmeter is shown in Figure 1-1. The integral model 10D1475H Converter housing shown contains an M2 electronics module. Remote model 10D1475J is furnished with 50XM1000N electronics. Refer to the separate M2 or 50XM1000N Converter Instruction Bulletins for additional information.

The Flowmeter without the electronics package is used with a remote Signal Converter. A remote mounted Signal Converter is recommended if:

- The integral model vibration specification is exceeded and/or
- The process liquid temperature exceeds the value given for that ambient temperature listed in the integral model's specifications.

Figure 1-2 shows a remote Primary used for general purpose and FM Class I, Div.2 applications. A 2-piece box with cable seal and pressure-relief fitting is shown. Figure 1-3 shows the remote Primary with cable seal used for FM Class I, Div.1 applications.



**FIGURE 1-2. REMOTE PRIMARY w/
GENERAL PURPOSE BOX**



**FIGURE 1-3. REMOTE w/
EXPLOSION PROOF BOX**

The Signal Converter also contains a magnet driver unit that is used to power the meter's magnet coils. The steady state magnetic field principle, referred to as the MAG-X[®] design concept, provides optimum zero point stability at an optimized frequency which is a submultiple of the power line frequency.

For additional detail, refer to Section 1.3.

1.2 Functional Description

The Magnetic Flowmeter body houses two signal electrodes and the flux producing magnet coils, as shown schematically in Figure 1-4. All primary intraconnection wiring is terminated at a printed circuit assembly located in the base of the meter housing.

In addition to having two energy limited electrode outputs, 10D1475J models and all primaries with integrally mounted Converters contain a current sensing reference voltage network. Adjustment of this network changes coil excitation current permitting "constant meter factors" to be derived from the various size Primaries. For Primaries with remote mounted M2 converters (10D1475H), the reference network provides a fixed 200 mA excitation current and is located on the base connection board of the Signal Converter.

The reference voltage network is connected in series with the magnet coils. Changes in the magnet drive voltage, which cause a proportional variation of flow signal, will simultaneously cause a similar variation of the reference voltage. The reference circuitry will precisely track the magnetic flux in the metering section. When measured along with electrode voltage by the signal converter, the reference voltage will provide immunity to system temperature or power supply variations.

1.2.1 Basic Operating Principle

1.2.1.1 Signal Voltage Generation

The operating principle of the Bailey-Fischer & Porter Model 10D1475 Magnetic Flowmeter is based upon Faraday's Law of Induction which states that the voltage induced across any conductor as it moves at right angles through a magnetic field will be proportional to the velocity of that conductor. This principle finds common application in direct and alternating current generators. Essentially, the Bailey-Fischer & Porter Magnetic Flowmeter constitutes a modified form of a generator.

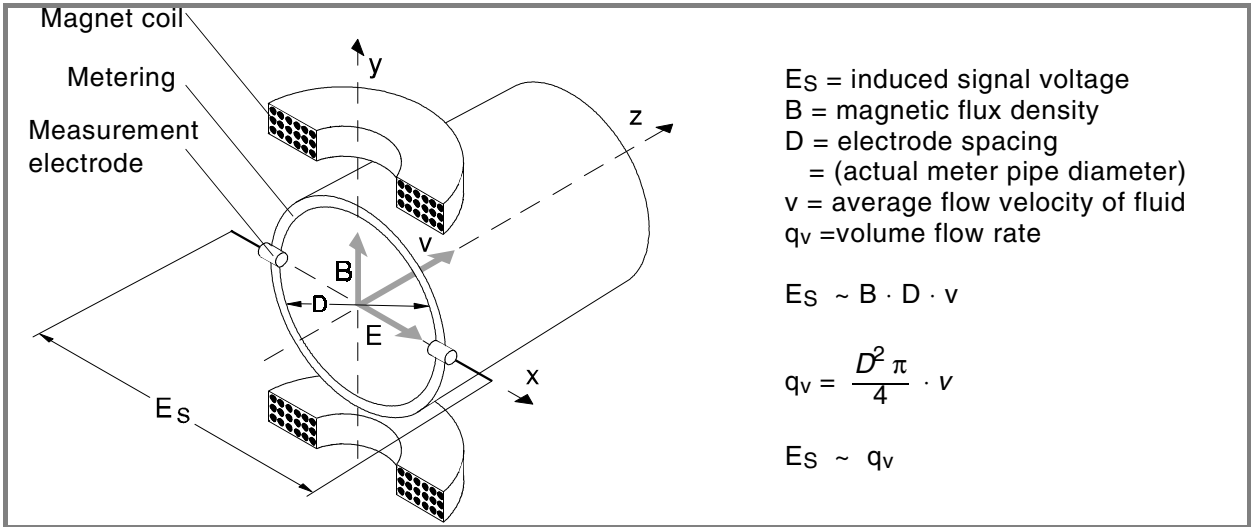


FIGURE 1-4. BASIC OPERATING PRINCIPLE

Figure 1-4 graphically illustrates the basic operating principle. A magnetic field, "B", is being generated in a plane which is perpendicular to the axis of the meter pipe. A disk of the metered liquid can be considered as a conductor. The transverse length "D" is equal to the meter pipe diameter. Since the velocity "V" of the liquid disk is directed along the axis of the meter pipe, a signal voltage, "Es", will be induced within this liquid which is mutually perpendicular to the direction of the liquid velocity and the flux linkages of the magnetic field; i.e., in the axial direction of the meter electrodes. This electrode voltage is the summation of all incremental voltages developed within each liquid particle that passes under the influence of the magnetic field.

This may be expressed mathematically as -

(Equation #1)

$$E_s = \frac{1}{\alpha} BDV$$

where:

- Es = induced electrode voltage
- B = magnetic field strength
- D = meter pipe diameter
- α = dimensionless constant
- V = liquid velocity

Thus, the metered liquid constitutes a continuous series of conductive liquid disks moving through a magnetic field. The more rapid the rate of liquid flow, the greater the instantaneous value of signal voltage as monitored at the meter electrodes.

1.2.1.2 Magnet Coil Drive Circuits

In many conventional Magnetic Flowmeters the integral magnet coils are driven directly by the customer's 50/60 Hz power service. The design of the Bailey-Fischer & Porter Series 10D1475 Magnetic Flowmeter uses magnet drive circuits which are alternately energized bi-directionally at a low frequency rate as commanded by the associated Converter/Driver assembly.

1.2.1.3 Volumetric Flow Rate Measurement

The Bailey-Fischer & Porter Magnetic Flowmeter is a volumetric flow rate measuring instrument. This can be shown by substituting the physical equivalent of liquid velocity into equation #1 as follows:

(Equation #2)

$$V = \frac{Q}{A} = \frac{4Q}{\pi D^2}$$

Substituting for V in equation #1

$$E_s = \frac{1}{\alpha} B D \frac{4Q}{\pi D^2}$$

and solving for Q:

$$\therefore Q = \frac{\pi \alpha D^2}{4} \cdot \frac{E_s}{B}$$

Since $B = \beta E_r$

and since α , D and β are constant:

(Equation #3)

$$Q = \gamma \frac{E_s}{E_r}$$

where:

- Q = volumetric flow rate
- A = cross-sectional area
- D = pipe section diameter
- E_s = induced signal voltage
- E_r = reference voltage
- B = magnetic flux density
- α = dimensionless constant
- β & γ = dimensional constant
- V = liquid velocity

Therefore, volumetric flow rate is directly proportional to the induced signal voltage as measured by the Bailey-Fischer & Porter Magnetic Flowmeter.

1.2.2 Operating Characteristics

1.2.2.1 Liquid Variables

1.2.2.1.1 Liquid Conductivity

The Magnetic Flowmeter requires a liquid conductivity of 5 microsiemens per centimeter or higher for operation. This minimum liquid conductivity requirement is not affected by the length of the signal interconnection cable when remote mounting of the Signal Converter is required, as long as the Bailey-Fischer & Porter supplied interconnection cable is utilized. The nominal maximum transmission distance for rated conductivities is limited to 80 meters (250 feet), however longer distances can be accommodated (contact factory for details of using a special, driven-shield cable).

Primaries with integrally mounted Signal Converters use an encapsulated buffer preamplifier for each electrode, it is not possible to effectively measure the AC resistance of the electrodes to determine the process fluid conductivity. The conductivity may be checked from actual process fluid sample measurements or from other known data. Bailey-Fischer & Porter Applications Engineers are qualified to determine the conductivities of special liquids, please contact the factory if assistance is required.

TABLE 1-1. ELECTRODE DIAMETERS

Meter Size		Electrode Diameter	
inch	mm	inch	cm
1/10	3	0.048	0.122
5/32	4	0.048	0.122
1/4	6	0.048	0.122
3/8	10	0.048	0.122
1/2 - 1 1/2	15 - 40	0.250	0.635
2 - 4	50 - 100	0.312	0.792

Low conductivity fluids require special consideration when applying magnetic flowmeters. Bailey-Fischer & Porter Applications Engineers will offer any assistance required for individual applications.

1.2.2.1.2 Liquid Temperature

Most liquids exhibit a positive temperature coefficient of conductivity. It is possible for certain marginal liquids to become sufficiently non-conductive at lower temperatures so as to hamper accurate metering. However, the same liquid at higher or normal environmental temperatures may be metered with optimum results. The possibility of an adverse temperature conductivity characteristic should be investigated before attempting to meter such a liquid. Process or ambient temperatures are also limited by the meter materials specification.

Other normal effects of temperature, such as influence upon liquid viscosity and density, the size of the metering area, and the flux density of the magnetic field, have negligible or no effect upon metering accuracy.

1.2.2.1.3 Other Liquid Variables

Other liquid variables such as viscosity, density and liquid pressure have no direct influence on metering accuracy. Liquid density has no effect on volumetric flow rate since only the area of the meter pipe and liquid velocity are required to determine the rate of flow. Viscosity and metering pressure are restricted to physical limitations alone, such as the leakage pressure of the meter pipe flange connections.

1.2.2.2 Metering Characteristics

The metering pipe must be completely filled at all times for accurate results. If there is possibility of operation with a partially filled horizontal pipeline, it is recommended that the Magnetic Flowmeter be installed in a vertical section of that pipeline such that liquid flow moves upward. A vertical installation also offers the advantage of an even distribution of liner wear in the event that solid abrasives are being carried along in the liquid stream.

The Bailey-Fischer & Porter Magnetic Flowmeter will measure the total amount of material passing in the liquid stream. The meter will not, for instance, differentiate between the amount of liquid and the amount of entrained gases. Also, in the case of a slurry, it will not differentiate the amount of liquid from solids. If the liquid to mixant ratio is of importance to process control, then separate measurements of the concentration of the desired medium must be made and appropriate correction factors must be applied to the Magnetic Flowmeter output.

In applications involving variable quantities of uniformly dispersed, non-conductive mixing agents, it must be ascertained that the higher concentrations of mixant will not drive the average conductivity of the liquid mixture below the minimum conductivity level for the given installation.

1.3 Model Number Breakdown

Refer to the Bailey-Fischer & Porter data sheet or the data tag on the equipment for the model number of the instrument furnished. The details of a specific number are shown on the following two pages.

10D1475 MINI-MAG MAGNETIC FLOWMETER INSTRUCTION BULLETIN

Order Number	10D1475	N			2																
Design Level																					
Models w/ M2 Electronic		H																			
Models w/ 50XM1000 Electronics		J																			
Liner Material																					
Tefzel (ETFE)		N																			
Meter Size - inches (mm)																					
1/10 (3)			01																		
5/32 (4)			02																		
1/4 (6)			04																		
3/8 (10)			06																		
1/2 (15)			07																		
1 (25)			09																		
1 1/2 (40)			11																		
2 (50)			12																		
3 (80)			14																		
4 (100)			15																		
Pressure Rating																					
ANSI Class 150				P																	
ANSI Class 300				Q																	
BS 10 Table D				S																	
BS 10 Table E				T																	
BS 10 Table F				U																	
DIN PN16				D																	
DIN PN40				F																	
Information Not Required				X																	
Electrode Material																					
Hastelloy-C				D																	
Tantalum				F																	
Zirconium				L																	
Platinum				M																	
Electrode Type																					
Flush										2											
Flange Material																					
Flangeless Design w/ Self-adhesive Tag																				8	
Flangeless Design w/ Riveted SS Tag																				9	
Safety Classification																					
w/o FM Approval (General Purpose)																				A	
FM Approved - Nonincendive for CII, Div 2, Gp A, B,C & D; Electrodes Intrinsically Safe for CII, Div 1, Gp A, B, C & D; Outdoor Hazardous Locations, NEMA 4X. Integral Signal Converter enclosure additionally approved: Dust-Ignitionproof CIII, Div 1, Gp E, F & G; Suitable for CIII, Div 1; Accidental Submergence, 30 ft H ₂ O/48 h (9 m H ₂ O/48 h)																					K
FM Approved - Explosionproof for CII, Div 1, Gp B, C & D; Dust-Ignition-proof CIII, Div 1, Gp E & G; Suitable for CIII, Div. 1; Electrodes Intrinsically Safe for CII, Div 1, Gp A, B, C & D - Outdoor Hazardous Location, NEMA 4X. (Remote version only)																					L
Power Requirements																					
<i>Integral Signal Converter</i> (Requires M2 Electronics)																					
220/230/240 VAC, 50/60 Hz																					
110/115/120 VAC, 50/60 Hz																					
48 VAC, 50/60 Hz																					
24 VAC, 50/60 Hz																					
48 VDC																					
24 VDC																					
<i>Remote Converter w/ Separate Model Number</i>																					
																				A	
																				C	
																				E	
																				F	
																				G	
																				H	
																				Y	

10D1475 MINI-MAG MAGNETIC FLOWMETER INSTRUCTION BULLETIN

Order Number	10D1475	-	N	-	-	2	-	-	-	-	-	-	-	-	-	-	-	-	-	-		
Enclosure Classification																						
IEC 529, IP65, NEMA 4X																		1				
Continuous Submergence: IEC 529, IP68, NEMA 4X, 33 ft H ₂ O (10 m H ₂ O) Continuous Duty. Signal cable permanently installed.																		4				
Accidental Submersion, IEC 529, IP67, 30 ft H ₂ O/48 h (9 m H ₂ O/48 h) (NEMA 4X)																		5				
Fluid Temperature Range																						
Integral Converter to 65°C (149°F)																		1				
Remote Converter to 121°C (250°F)																		2				
[Refer to operating conditions curve in Specifications section for allowable combinations of fluid & ambient temperatures]																						
Output Current																						
No Output Signal Required																		A				
0-20 mA DC																		B				
4-20 mA DC																		C				
Output Options																						
No Scaled Output Required																		1				
Active Scaled Pulse Forward & Zero Return																		2				
Active Scaled Pulse Forward & Reverse																		4				
Data Link RS232C																		5				
Data Link RS485																		6				
Active Scaled Pulse Forward & 10 KHz Unscaled Pulse																		7				
Bailey FSK																		9				
Communication Mode																						
Not applicable																		1				
ASCII																		2				
HART Protocol																		4				
Coil Drive Frequency																						
7-1/2 Hz (60 Hz line frequency)																		1				
15 Hz (60 Hz line frequency)																		2				
15 Hz (DC power, in vicinity of 60 Hz line)																		3				
6-1/4 Hz (50 Hz line frequency)																		4				
12-1/2 Hz (50 Hz line frequency)																		5				
6-1/4 Hz (DC power, in vicinity of 50 Hz line)																		6				
12-1/2 Hz (DC power in vicinity of 50 Hz line)																		7				
7-1/2 Hz (DC power, in vicinity of 60 Hz line)																		8				
Additional Options																						
Empty Pipe Detector																		1				
None																		2				
HART Protocol & Empty Pipe Detector																		3				
HART Protocol																		4				
Mounting Hardware Kit																						
Standard Kit: Steel Bolts & Nuts, Centering Device, Klinger Sil C-4401 Gaskets																		C				
Optional Kit: Steel Bolts & Nuts, Centering Device, Teflon Gaskets																		E				
Standard Kit Not Required																		X				
Converter																						
Required																		1				
Not Required (Primary only)																		2				

1.4 Specifications

Power Requirements See Section 1.3 Model Number Breakdown

Power Consumption Refer to Signal Converter Instruction Bulletin

Flowmeter Characteristics

Meter Size/Flow Capacity

NOTE
Any maximum (range) between 0.02 x Meter Capacity & 1.0 x Meter Capacity is available with HART or standard software.

TABLE 1-2. METER CAPACITY

			Flow Ranges 0 to value tabulated			
Meter Size		METER CAPACITY*	Minimum		Maximum	
inch	mm	gpm	gpm	lpm	gpm	lpm
1/10	3	1.06	0.021	0.08	1.06	4.0
5/32	4	2.12	0.042	0.16	2.12	8.0
1/4	6	5.28	0.11	0.40	5.28	20
3/8	10	11.9	0.24	0.90	11.9	45
1/2	15	26.4	0.53	2.00	26.4	100
1	25	52.8	1.06	4.00	52.8	200
1 1/2	40	158.5	3.17	12.0	158	600
				m³/h		m³/h
2	50	264.2	5.28	1.2	264	60
3	80	792.5	15.85	3.6	792	180
4	100	1057	21.14	4.8	1057	240

* Flow Velocity (ft/s) = (Operating GPM x 32.81)/METER CAPACITY

Span Factory set at specified range between extremes listed in table above; can be field adjusted.

Rangeability 50:1

Minimum Liquid Conductivity 5 µS/cm

System Accuracy
(At Reference Conditions)

	Flowrate	Accuracy
Frequency Output	< 2% Meter Capacity ≥ 2% Meter Capacity	± 0.01% Meter Capacity ± 0.5% of rate

RFI Protection Class 3-abc-0.5% (30 V/m-27 to 446 MHz) Per SAMA Standard PMC 33.1-1978.

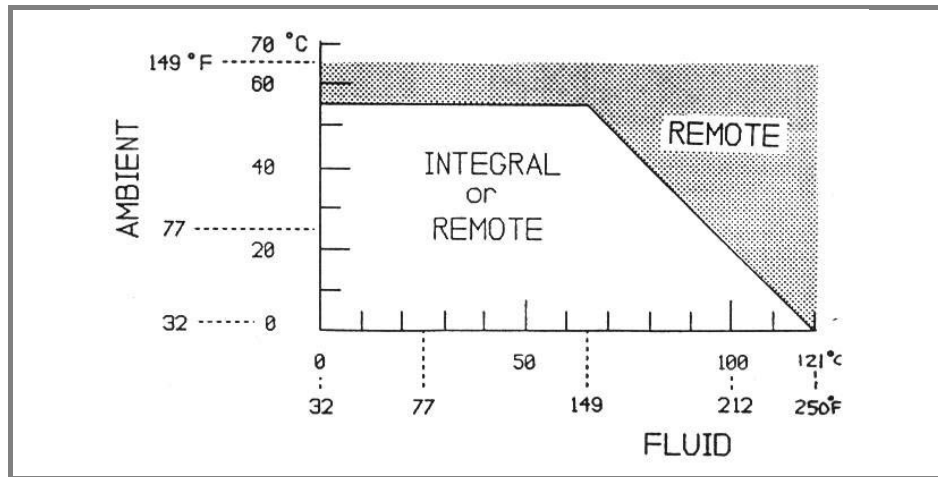
Environmental Limits

Enclosure Classification with or without Signal Converter	NEMA 4X, IEC 529 IP65
Accidental Submergence	IEC 529 IP67, 30 feet H ₂ O/48 h (9 m H ₂ O /48 h)
Continuous Submergence	IEC 529 IP68, 30 feet H ₂ O (9 m H ₂ O)
Ambient Temperature Limits	

MODEL	LIMITS
10D1475H w/ Integral Converter	-4 to 131° F (-20 to 55° C)
10D1475H/J w/ Remote Converter	-40 to 150° F (-40 to 65° C)

Process Limits

Temperature Limits



NOTE
Signal Converter must be remote mounted if liquid temperature exceeds value listed for a given ambient temperature. Liquid temperature must not exceed 250°F (121°C) in any event.

Pressure

Temperature		Pressure	
°F	°C	psi	MPa
100	40	740	5.11
150	65	720	4.96
250	120	650	4.50

Vacuum full vacuum at 212° F (100° C) for 1/10 - 3 in. (3 - 80 mm) sizes
full vacuum at 176° F (80° C) for 4 in. (100 mm) size

Meter Capacity specified on Flowmeter data tag (equal to max flow capacity in engineering units). This factor is equivalent to a flow velocity of 32.81 ft/s in the metering tube.

Physical Characteristics

Outline Dimensions

Magnetic Flowmeter with integral Signal Converter Refer to Figure 2-1

Remote w/ 2-pc. Box Refer to Figure 2-2

Remote w/ Explosion-Proof Box Refer to Figure 2-3

Remotely Mounted Signal Converter Refer to Signal Converter Instruction Bulletin

Conduit Connections two 1/2 inch NPT internally threaded entrances in Flowmeter junction box

Cable Length, Remote Converter NEMA 4X & Accidental Submersion - 250 ft.
Continuous Submergence - 100 ft.

Meter Weight

TABLE 1-3. METER WEIGHTS

METER SIZE		INTEGRAL		REMOTE		EXPLOSION PROOF REMOTE	
in.	mm	lbs.	kg	lbs.	kg	lbs.	kg
1/10	3	9	4.1	4	1.8	5	2.3
5/32	4	9	4.1	4	1.8	5	2.3
1/4	6	9	4.1	4	1.8	5	2.3
3/8	10	9	4.1	4	1.8	5	2.3
1/2	15	9	4.1	4	1.8	5	2.3
1	25	10	4.5	4	1.8	5	2.3
1 1/2	40	11	5	5	2.3	6	2.7
2	50	12	5.4	7	3.2	8	3.6
3	80	16	7.3	10	4.5	11	5
4	100	22	10	16	7.3	17	7.7

Vibration Limit

Integrally Mounted *5 to 14 Hz, 0.10 inch,
14 to 2000 Hz, 1 g

* Signal Converter must be remotely mounted if these limits are exceeded.

Remotely Mounted 5 to 14 Hz, 0.20 inch
14 to 2000 Hz, 1.5 g

Materials of Construction

Meter Liner	TEFZEL (ETFE)
Electrode Assemblies	Hastelloy-C, Tantalum, Zirconium or Platinum materials as specified (ref: Application Guide PMI IV.C.10)
Meter Housing	carbon steel, all welded construction, epoxy finish
Electronics Housing	die cast aluminum, epoxy finish, 316 sst attachment screws, 1/2 in. NPT conduit connections; gasketed covers
Installation Kit	includes 2 gaskets, mounting studs and nuts, flange adaptor device when required.
Safety Classification	Refer to Section 1.3

2.0 INSTALLATION

2.1 Inspection

All Bailey-Fischer & Porter Model 10D1475 Magnetic Flowmeters are shipped in heavy duty containers. An itemized list of all items included in the shipment is attached to the shipping container.

Depending upon the particular model specified, the shipment will generally consist of:

- Magnetic Flowmeter with integrally mounted Signal Converter and appropriate mounting hardware kit

or

- Magnetic Flowmeter and appropriate mounting hardware kit, and a remotely mounted Signal Converter with mounting hardware and a 30 feet (9m) interconnection cable.

The mounting hardware kit for the Flowmeter includes:

- 4 (or 8) threaded studs and nuts
- 2 gaskets
- appropriate flange adaptor components, if specified.

NOTE

The centering device (Refer to Figure 2-6) or adaptor sleeves (Refer to Figure 2-7) required for the particular meter installation are supplied by Bailey-Fischer & Porter with all U.S. orders.

Inspect all items included in the shipment immediately for indications of damage which may have occurred during shipment. All damage claims should be reported to the shipping agent involved before attempting to install or operate the equipment.

The proper use of the items included in the mounting hardware kit, as described subsequently, and the proper employment of them during installation is necessary to maintain a valid instrument warranty. An installation and warranty tag is furnished with the mounting hardware kit that provides the basic information essential for proper meter installation.

Following inspection of the shipment contents, it is suggested that all items be carefully replaced in the shipping container for transit to the installation site. The use of normal care in the handling and installation of this equipment will contribute substantially toward satisfactory performance.

2.2 Location

The Flowmeter is suitable for either indoor or outdoor installation. When selecting the installation site, consideration should be given to the ambient and process temperature limits, as stated in the Specifications. Consideration should be given to access for servicing the meter. The standard meter is rated NEMA 4X, watertight, and will withstand rain and hose down. If flooding is a problem, the optional "Accidental Submersible" flowmeter is suited for 30 feet (of water) depths for up to 48 hours or a "Continuous Submergence" suitable for use under 30 feet (9 meters) of water is available.

The integrally mounted Signal Converter includes RFI filters that provide excellent protection against radiated RFI/EMI. Therefore, stray electromagnetic and electrostatic fields, low power radio transmissions, etc. will have no effect upon the operating characteristics of the electronic package of the Magnetic Flowmeter system. It is recommended, however, that the meter not be installed within the immediate proximity of heavy induction equipment.

Outline dimensions of the magnetic flowmeters are given in Figures 2-1 through 2-3. When applicable, provide access for occasional servicing of the integrally mounted Signal Converters. At least five inches of overhead clearance is required for cover removal as shown in Figure 2-1. Observe the various clearances given on the drawings. If the cover is removable from the front for servicing of the electronics, provide adequate working space. When a remote mounted Signal Converter is specified, Converter outline and mounting dimensions are provided in the Instruction Bulletin supplied for the particular Converter.

The installation site must be provided with a source of power for the meter's electronics (refer to the ratings in Sections 1-2 & 1-3 and to the meter's data tag. The power source must have an external disconnect and suitable fuse (or circuit breaker), as shown on the interconnection diagram.

2.3 Mounting

2.3.1 Meter Orientation

The Bailey-Fischer & Porter Model 10D1475 MINI-MAG Magnetic Flowmeter may be installed in horizontal, vertical or sloping pipe runs. However, precautions must be taken to assure that the meter is filled at all times during measurement. A vertical installation, with the pipe line carrying liquid upwards, assures a filled hydraulic line under low flow rate conditions and also minimizes wear on the meter lining by abrasive grit. Horizontal installations should be made with the meter in the lower section of a pipeline to assure a filled meter condition.

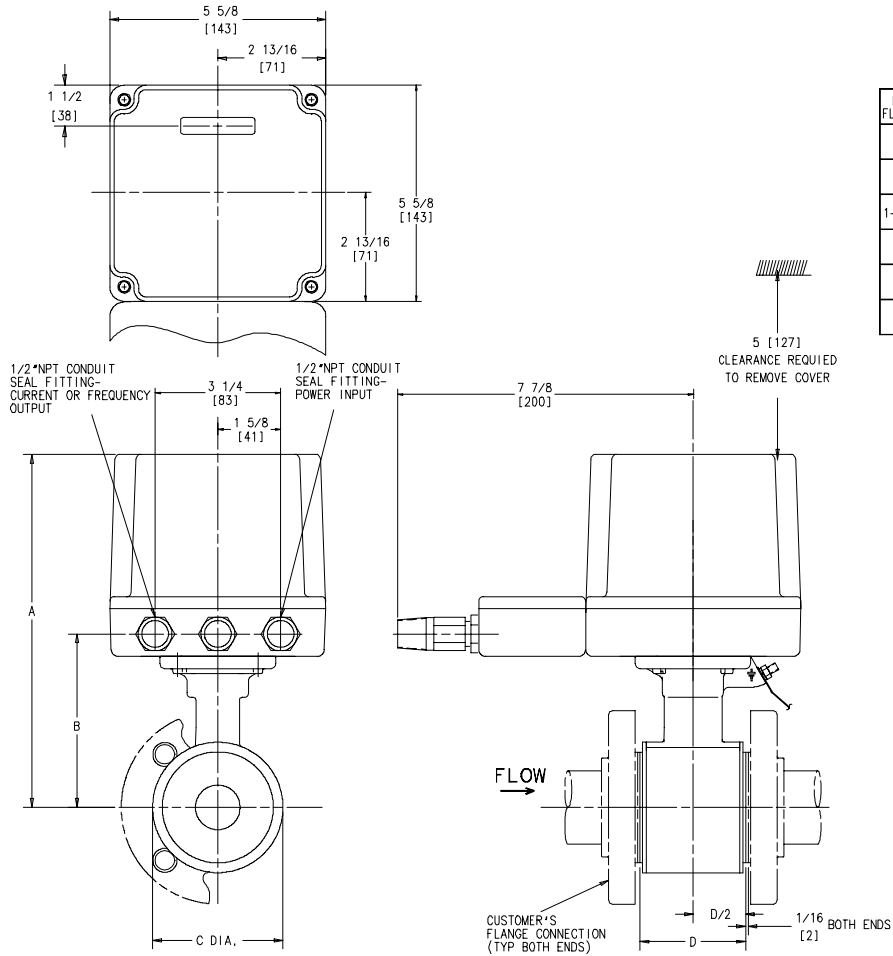
The electronic housing of the meter should be **top** oriented for horizontal or sloping installations. If the electronic housing must be **bottom** oriented, vibration must be limited to be within the specifications shown in Section 1.4. Orienting the electronic housing top or bottom aligns the meter electrodes in a lateral plane which eliminates the possibility of entrained air acting as an electrode insulator. An electrode must not be on "top" when the meter is horizontally mounted.

The Magnetic Flowmeter must be oriented in accordance with the direction of process flow, as indicated by the **FLOW** arrow on the meter data tag. Elbows should be located a minimum of three pipe diameters upstream from the meter. Control valves should be located on the downstream side of the meter. Control valves upstream of the meter can create turbulence that result in air pockets and may effect the meter's accuracy or cause its output to be noisy. If for some reason the control valve cannot be located downstream from the meter, a minimum of ten pipe diameters upstream are required between the meter and the control valve. The requirements for control valves also applies to pumps. Pipe diameters are measured from the centerline of the meter to the nearest edge of the device, as shown in Figure 2-4. For higher accuracy requirements, use twice the number of pipe diameters referenced. See Figure 2-4 for recommended piping arrangement.

When the process liquid contains abrasive grit, avoid disturbance upstream of the meter so that the liquid passes smoothly through the meter; elbows and tees can distort the flow pattern causing uneven liner wear.

2.3.2 Meter Handling

The TEFZEL liner of the Flowmeter must be protected at all times. The liner can be damaged by sharp objects or cut by undue pressure. Do not pass any rope or wire sling through the meter liner.



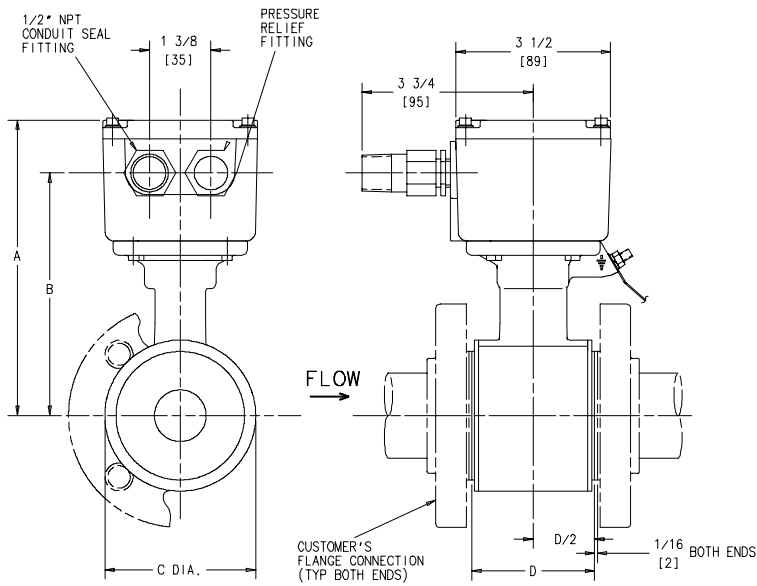
METER AND FLANGE SIZES	CUSTOMER FLANGE TYPE AND RATING	A	B	C DIA	D
1/10 [3]- 1/2 [15]	ANSI CLASS 150 ANSI CLASS 300 BS 10 TBL D,E,F DIN PN 10, 16, 25 & 40	7-11/16 [195]	3-3/4 [95]	1-7/8 [48]	2-5/32 [55]
1 [25]		8-1/16 [205]	4-1/8 [105]	2-5/8 [67]	2-5/32 [55]
1-1/2 [40]		8-7/16 [214]	4-1/2 [114]	3-3/8 [86]	2-3/4 [70]
2 [50]		8-3/4 [222]	4-13/16 [122]	4 [102]	3-11/32 [85]
3 [80]		9-3/8 [238]	5-7/16 [138]	5-1/4 [133]	4-23/32 [120]
4 [100]		10 [254]	6-1/16 [154]	6-1/2 [165]	5-29/32 [150]

NOTES:

1. DIMENSIONS ARE IN INCHES. DIMENSIONS IN BRACKETS [] ARE IN MILLIMETERS.
2. DIMENSIONS GUARANTEED ONLY IF THIS PRINT IS CERTIFIED.
3. ALL DIMENSIONS SUBJECT TO MANUFACTURING TOLERANCE OF ±1/8 INCH (3mm).
4. METER MUST BE COMPLETELY FILLED WITH LIQUID TO INSURE ACCURACY.
5. FLOW MUST BE IN SAME DIRECTION AS FLOW ARROW. 1/2 NPT CONDUIT CONNECTIONS IN HOUSING INDICATE "UPSTREAM" END OF METER.
6. METER MOUNTS BETWEEN CUSTOMER'S PIPELINE FLANGES. TYPES AND RATINGS LISTED IN TABLE OF DIMENSIONS.
7. THIS DRAWING IS THIRD ANGLE PROJECTION AS SHOWN

10d-4353r0
75H/INTEG CONV

FIGURE 2-1. OUTLINE DIMENSIONS OF FLOWMETER WITH INTEGRAL SIGNAL CONVERTER

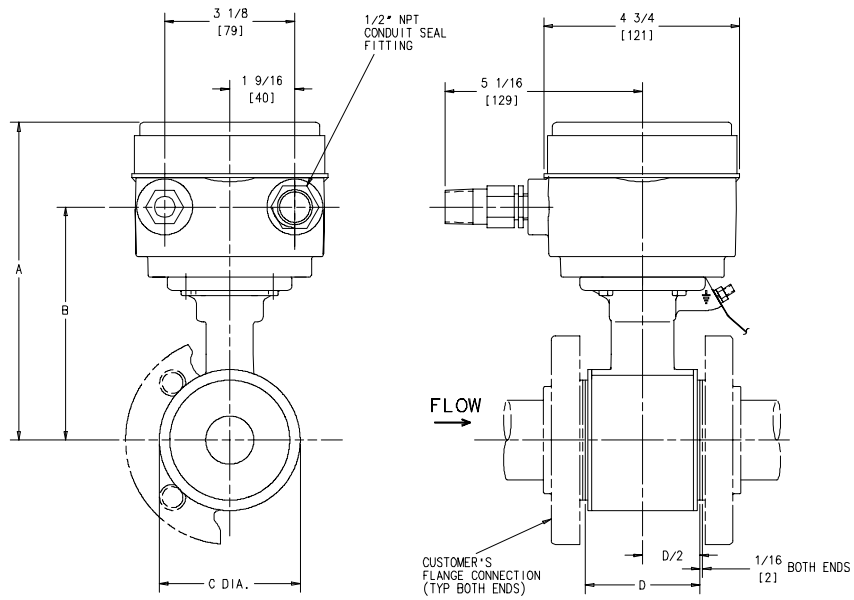


METER AND FLANGE SIZES	CUSTOMER FLANGE TYPE AND RATING	A	B	C DIA	D
1/10 [3]- 1/2 [15]	ANSI CLASS 150 ANSI CLASS 300 BS 10 TBL D,E,F DIN PN 10, 16, 25 & 40	5-23/32 [145]	4-21/32 [118]	1-7/8 [48]	2-5/32 [55]
1 [25]		6-3/32 [155]	5-1/32 [128]	2-5/8 [67]	2-5/32 [55]
1-1/2 [40]		6-15/32 [164]	5-13/32 [137]	3-3/8 [86]	2-3/4 [70]
2 [50]		6-25/32 [172]	5-23/32 [145]	4 [102]	3-11/32 [85]
3 [80]		7-13/32 [188]	6-11/32 [161]	5-1/4 [133]	4-23/32 [120]
4 [100]		8-1/16 [205]	7 [178]	6-1/2 [165]	5-29/32 [150]

- NOTES:
1. DIMENSIONS ARE IN INCHES. DIMENSIONS IN BRACKETS [] ARE IN MILLIMETERS.
 2. DIMENSIONS GUARANTEED ONLY IF THIS PRINT IS CERTIFIED.
 3. ALL DIMENSIONS SUBJECT TO MANUFACTURING TOLERANCE OF ±1/8 INCH (3mm).
 4. METER MUST BE COMPLETELY FILLED WITH LIQUID TO INSURE ACCURACY.
 5. FLOW MUST BE IN SAME DIRECTION AS FLOW ARROW. 1/2 NPT CONDUIT CONNECTIONS IN HOUSING INDICATE *UPSTREAM* END OF METER.
 6. METER MOUNTS BETWEEN CUSTOMER'S PIPELINE FLANGES. TYPES AND RATINGS LISTED IN TABLE OF DIMENSIONS.
 7. THIS DRAWING IS THIRD ANGLE PROJECTION AS SHOWN

10d-4354r0
75H/REMOTE CONN

FIGURE 2-2. OUTLINE DIMENSIONS OF REMOTE FLOWMETER WITH 2-PIECE BOX



METER AND FLANGE SIZES	CUSTOMER FLANGE TYPE AND RATING	A	B	C DIA	D
1/10 [3]-1/2 [15]	ANSI CLASS 150 ANSI CLASS 300 BS 10 TBL D,E,F DIN PN 10, 16, 25 & 40	7 [178]	4-13/16 [122]	1-7/8 [48]	2-5/32 [55]
1 [25]		7-3/8 [187]	5-3/16 [132]	2-5/8 [67]	2-5/32 [55]
1-1/2 [40]		7-3/4 [197]	5-9/16 [141]	3-3/8 [86]	2-3/4 [70]
2 [50]		8-1/16 [205]	5-7/8 [149]	4 [102]	3-11/32 [85]
3 [80]		8-11/16 [221]	6-1/2 [165]	5-1/4 [133]	4-23/32 [120]
4 [100]		9-11/32 [237]	7-5/32 [182]	6-1/2 [165]	5-29/32 [150]

NOTES:

1. DIMENSIONS ARE IN INCHES. DIMENSIONS IN BRACKETS [] ARE IN MILLIMETERS.
2. DIMENSIONS GUARANTEED ONLY IF THIS PRINT IS CERTIFIED.
3. ALL DIMENSIONS SUBJECT TO MANUFACTURING TOLERANCE OF ±1/8 INCH (3mm).
4. METER MUST BE COMPLETELY FILLED WITH LIQUID TO INSURE ACCURACY.
5. FLOW MUST BE IN SAME DIRECTION AS FLOW ARROW. 1/2 NPT CONDUIT CONNECTIONS IN HOUSING INDICATE *UPSTREAM* END OF METER.
6. METER MOUNTS BETWEEN CUSTOMER'S PIPELINE FLANGES. TYPES AND RATINGS LISTED IN TABLE OF DIMENSIONS.
7. THIS DRAWING IS THIRD ANGLE PROJECTION AS SHOWN

10d-4358r0
75H DIV1/CONT SUB

FIGURE 2-3. OUTLINE DIMENSIONS OF REMOTE FLOWMETER WITH EXPLOSION-PROOF BOX

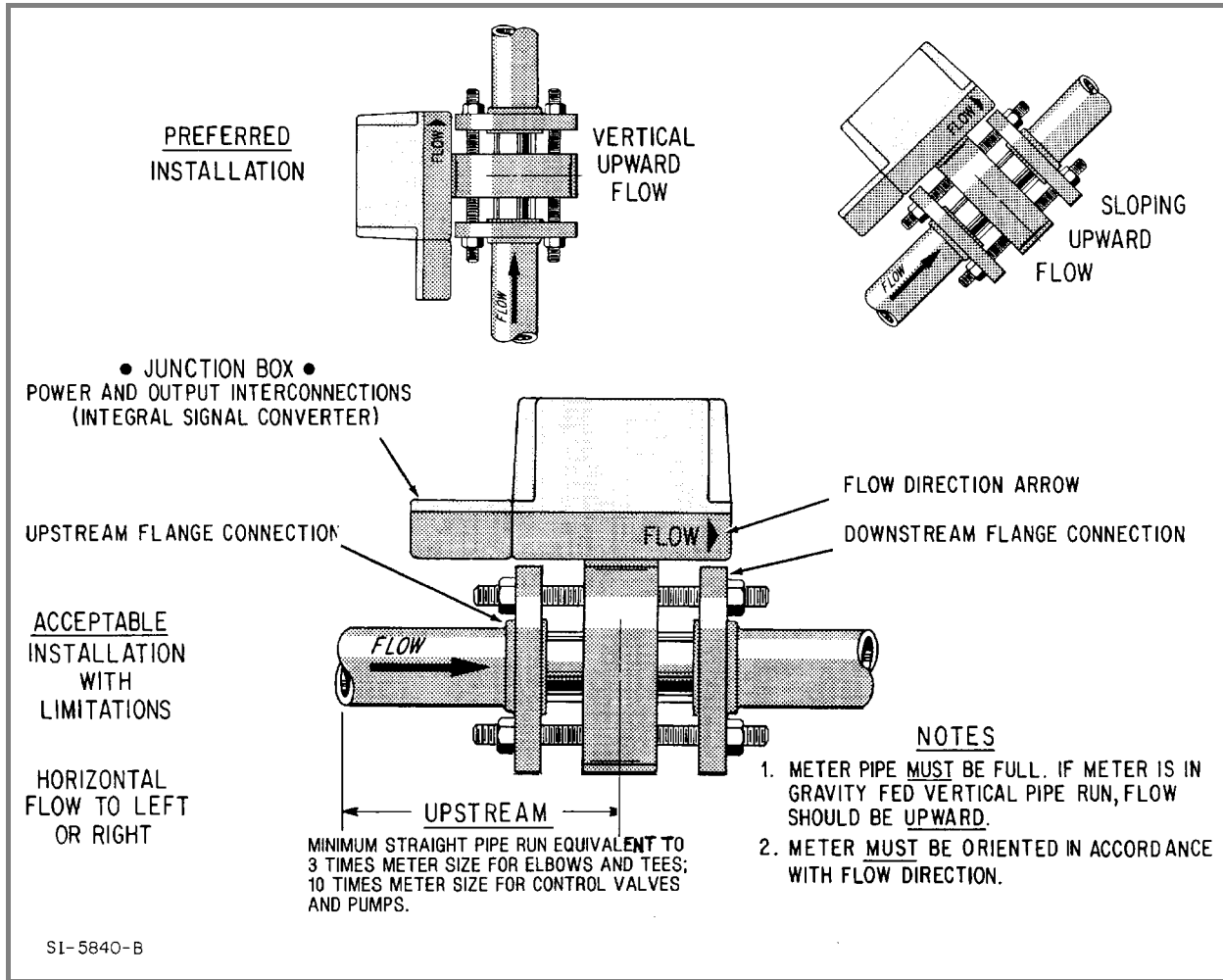


FIGURE 2-4. RECOMMENDED PIPING ARRANGEMENT

2.3.3 Pipe Connections

The Model 10D1475 Magnetic Flowmeter has a wafer type body designed for mounting between adjacent pipe flanges. Most commonly used ANSI, BS and DIN type flanges can be accommodated.

Mounting hardware (studs, nuts, gaskets and the flange adaptor device(s) for the particular flange type and rating specified) is supplied for use with common ANSI flanges. Line schedule 80 or lighter pipe is recommended for system piping.

When the Magnetic Flowmeter is to be mounted in an electrically non-conductive pipeline such as totally plastic pipe, or a metal pipeline with an insulating liner, the user must obtain a pair of meter grounding rings (discussed in Section 2.4 Grounding Procedure) to facilitate grounding of the process. Good grounding is effected by bonding the meter body to the process liquid both upstream (inlet end) and downstream (outlet end) of the meter; thereby preventing any stray electrical currents that may be carried by the pipeline, or by the process, from passing through the Magnetic Flowmeter. Improper grounding often results in unsatisfactory meter performance, therefore particular attention should be paid to the meter grounding procedure.

The threaded mounting studs and nuts supplied in the meter installation kit should be well lubricated before use. When the meter has been installed in the pipeline, tighten the nuts in even increments around the flange surface. It is recommended that an open end wrench with a handle length no greater than 8 inches be used for tightening the nuts; i.e., torque should be limited to that which will produce a positive seal without damage to the face of the meter lining.

For 4-bolt and 8-bolt flanges, tighten the flange bolts in a "star" pattern as shown in Figure 2-5 to avoid localized stresses on the gaskets. The bolts and nuts should be tightened approximately 50% during the first pass, approximately 80% during the second pass and to full tightness during the third pass.

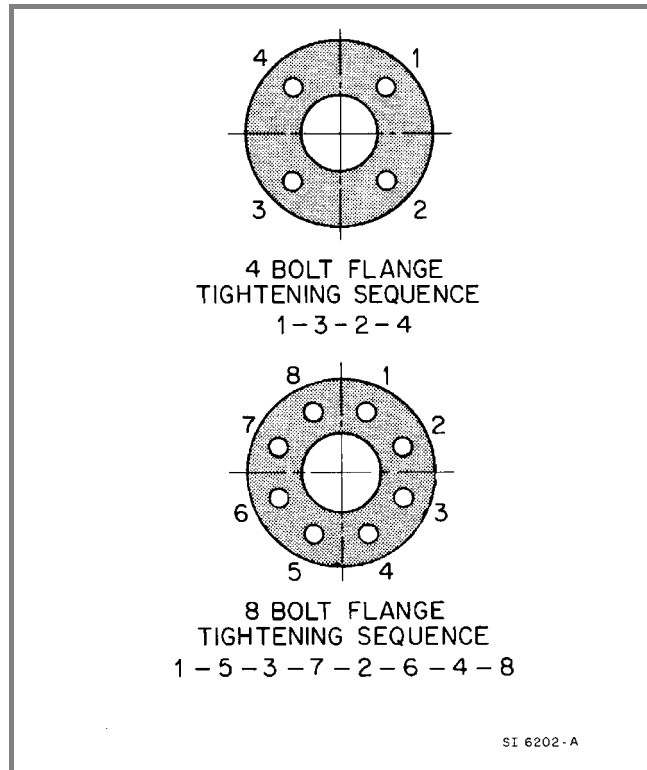


FIGURE 2-5. BOLT TIGHTENING SEQUENCE

NOTE

All 1/10 - 1/2 inch (3 - 15 mm) size Magnetic Flowmeters are supplied for use with 1/2 inch (15 mm) pipe flange.

2.3.4 Gaskets

Use only the gaskets supplied with the instrument. The gaskets supplied with the meter are the proper size for the meter size and type specified. When installing the meter it is important that the correct size gaskets be utilized. Use of the wrong size gaskets could allow the inner diameter of the gasket to protrude into the flow stream, thereby altering the flow profile within the meter. This condition could affect meter accuracy significantly and must be avoided. Using the proper gaskets and installing them correctly will also avoid any possibility of leakage. Observe parts information given in Section 6.0.

CAUTION

Do not use graphite gaskets.

Under certain conditions they may cause an electrically conductive layer to form on the inside wall of the meter, causing meter operation to degrade.

2.3.5 Basic Mounting Procedure

Refer to Figure 2-6 to supplement the following procedure.

1. Insert both of the two lower mounting studs through the clearance holes in the pipe flange, so that approximately half the stud length extends past the flange face. (Start with either the upstream or downstream flange, as convenient.)

3. Install a gasket next to the flange face.

4. Slip an adaptor sleeve* on both of the mounting studs, and then install the other gasket required. The two mounting studs can now be guided through the clearance holes in the downstream (typical) gasket and its associated flange.

*Exception: Adaptor sleeves are not required for size 1/10 to 1-1/2 in. meters placed between ANSI Class 150 pipeline flanges.

5. Place the MINI-MAG Magnetic Flowmeter between the two flange gaskets, with the meter resting on the two adaptor sleeves. **The meter must be oriented in accordance with the flow direction arrow.**

6. Install the two upper mounting studs and adaptor sleeves as shown in Figure 2-6. Note that when the sleeves are properly located, only four adaptor sleeves are needed for positioning the meter. In systems with an 8-bolt flange pattern, insert the four remaining mounting studs through the clearance holes in the upstream and downstream flanges.

7. Thread nuts on both ends of the 4 (or 8) mounting studs, finger-tight.

8. As the meter body is positioned properly by the adaptor sleeves, it is only necessary to tighten the stud nuts to complete the mounting procedure. Tighten the nuts in a "star" pattern as shown in Figure 2-5 and in even increments; to produce an even pressure distribution around the flange faces. Bolt torque should be limited to that sufficient to produce a positive seal for the application.

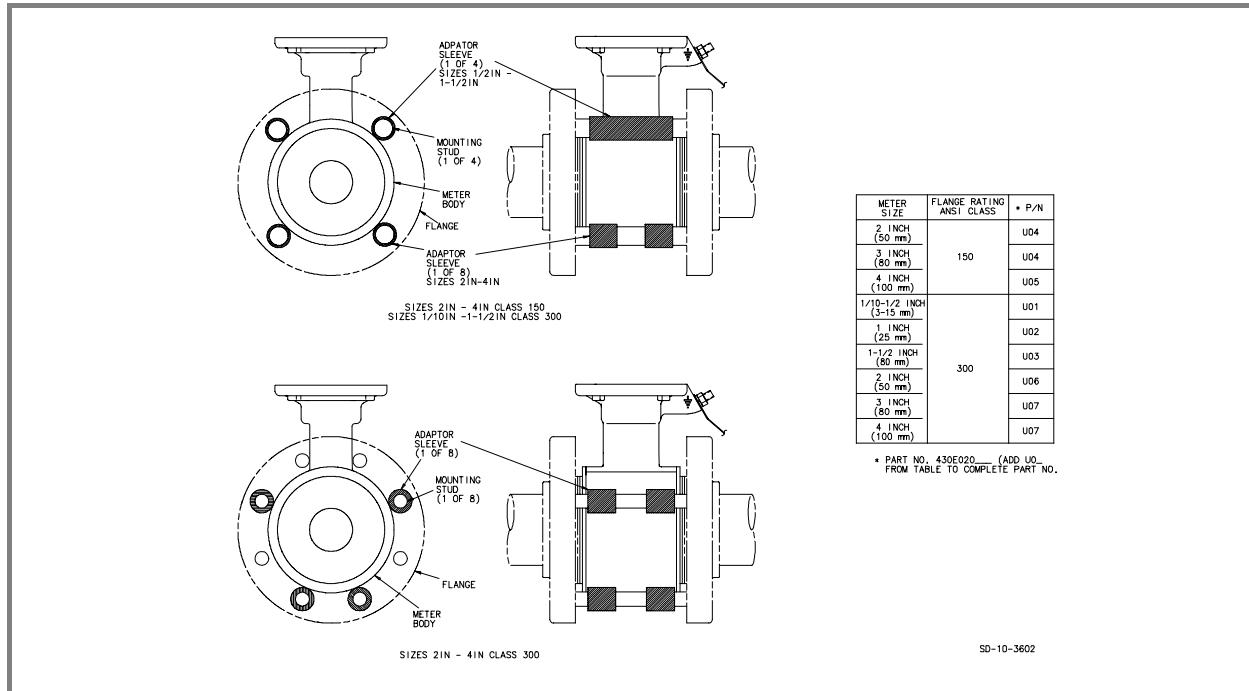


FIGURE 2-6. METER MOUNTING DIAGRAM

2.4 Grounding Procedure

2.4.1 General

Satisfactory operation of the Magnetic Flowmeter system requires that careful attention be paid to proper grounding techniques. Meter grounding requirements are a combination of standard grounding methods and grounding of the meter body to the process liquid. The grounding of the process liquid places an electrical short circuit through the meter body, thereby routing any stray current around the process liquid rather than through it.

There are two basic types of piping systems:

- One type is an electrically conducting pipeline in which the process liquid comes in contact with the conductive pipe. This piping requires only that the grounding wires be attached to the adjacent pipe flanges.
- In the other case, the pipeline may be lined with a non-conductive material. These lined pipelines require the use of metal grounding rings to ground the process liquid and the conductive exterior of the pipe/meter to ground.

A good ground is one that is in contact with the earth over a large conductive area. An excellent example of this is an iron cold water pipe that is buried in the earth for a considerable distance in its distribution system. The water pipe laterals form a large conductive area of contact, that in turn provides a low resistance connection to earth. Plastic pipe does not provide an adequate ground system.

Select the grounding procedure applicable from Sections 2.4.2 or 2.4.3 that follow. **Proper grounding of the Magnetic Flowmeter is required for optimum system performance.**

2.4.2 Conductive Pipeline

If the flowmeter is included as part of a conductive pipeline that is not electrically insulated from the liquid to be metered, the following grounding procedure should be followed. Refer to Figure 2-7 to supplement the text.

1. Drill and tap a blind hole on the peripheral surface of each of the two adjacent pipeline flanges (see Figure 2-7 inset). These tapped holes should be placed so that they are within easy reach of the bonding straps (2 supplied) attached to the ground lug on the meter housing.
2. Obtain a bright metal surface around the edges of both tapped holes with a file or emery cloth.
3. Clamp the end of each bonding strap to the adjacent pipe flange, using a pair of hex head bolts and external tooth lockwashers (supplied by user).
4. The user must supply a sufficient length of grounding wire for connecting the meter grounding post (ring lug supplied) to a good electrical ground. (Number 12 AWG, or heavier, copper wire may be used for this grounding wire.)

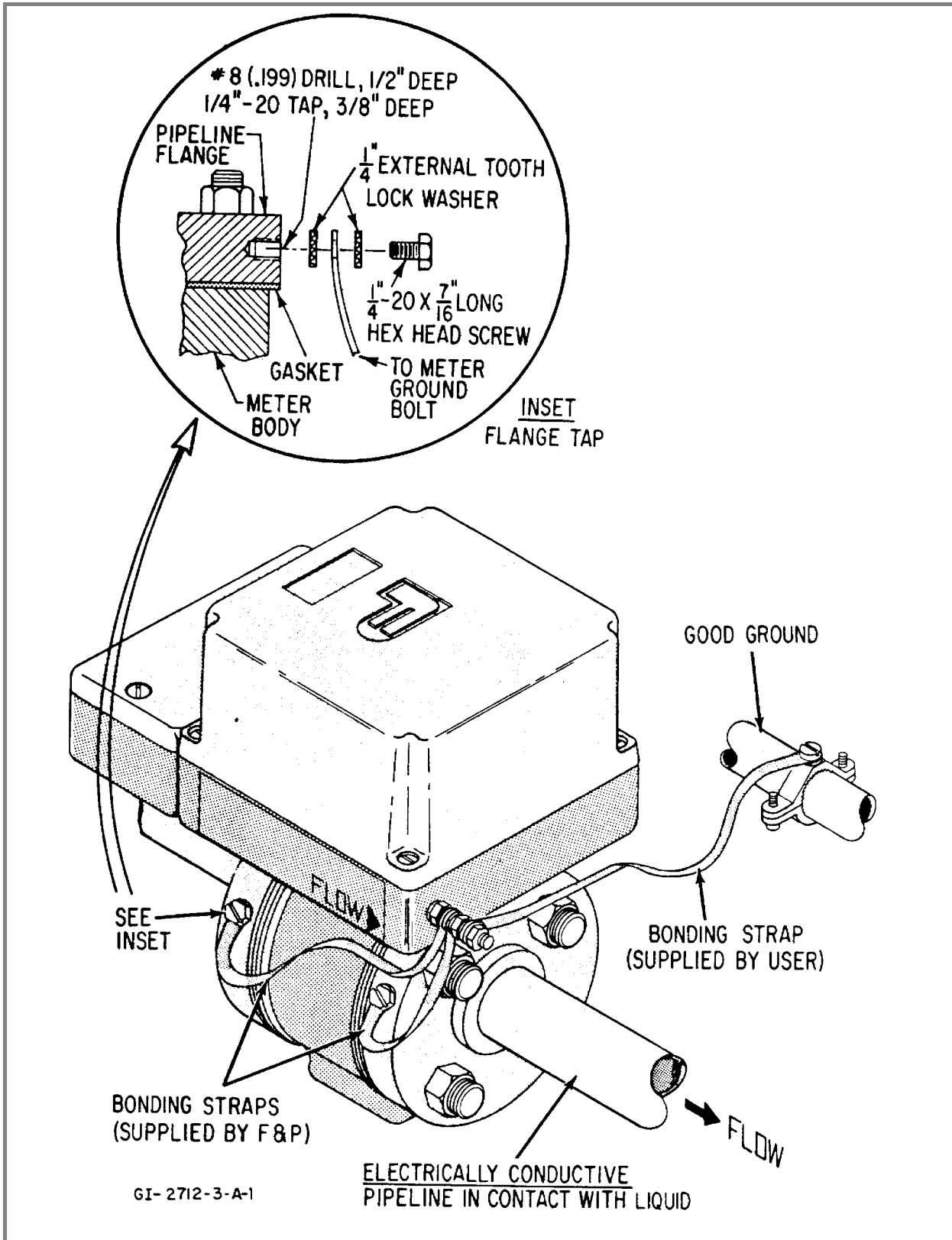


FIGURE 2-7. GROUNDING PROCEDURE, CONDUCTIVE PIPE

2.4.3 Non-Conductive or Insulated Pipeline

For the Bailey-Fischer & Porter Magnetic Flowmeter mounted in a non-conductive or liquid insulated pipeline (such as totally plastic pipe, ceramic lined iron pipe, or cast pipe with internal bitumastic coating), perform the grounding procedure outlined below. Refer to Figures 2-8 and 2-9 to supplement this discussion.

1. Grounding rings are required if the meter is installed in non-conductive or insulated pipe. If grounding rings and gaskets were not specified at the time the meter was ordered, they can be ordered from Tables 6-1 and 6-2. Grounding rings are available in various corrosion resistant materials and should be selected to be compatible with the process liquid. When installed, these rings are centered by the flange bolts and therefore must be selected according to the flange rating.

2. When installing the meter in the pipeline, place a grounding ring at both the inlet and outlet connections of the Magnetic Flowmeter. Provide standard gasketing between the face of the meter liner and the grounding ring and the adjacent pipe flange; i.e., four gaskets required. Position the grounding rings in the pipeline so that the meter grounding straps (2) attached to the meter ground post will easily reach the ground strap connection bolt on the respective grounding ring.

3. Clamp the free end of the two bonding straps (shortest strap to downstream grounding ring) to the applicable grounding ring; using hex head bolt and external tooth lockwasher (supplied with the grounding rings when rings are ordered from Bailey-Fischer & Porter).

4. The user must supply a sufficient length of grounding wire for connecting the meter grounding post (ring nut supplied) to a good electrical ground. Number 12 AWG, or heavier, copper wire may be used for this grounding wire.

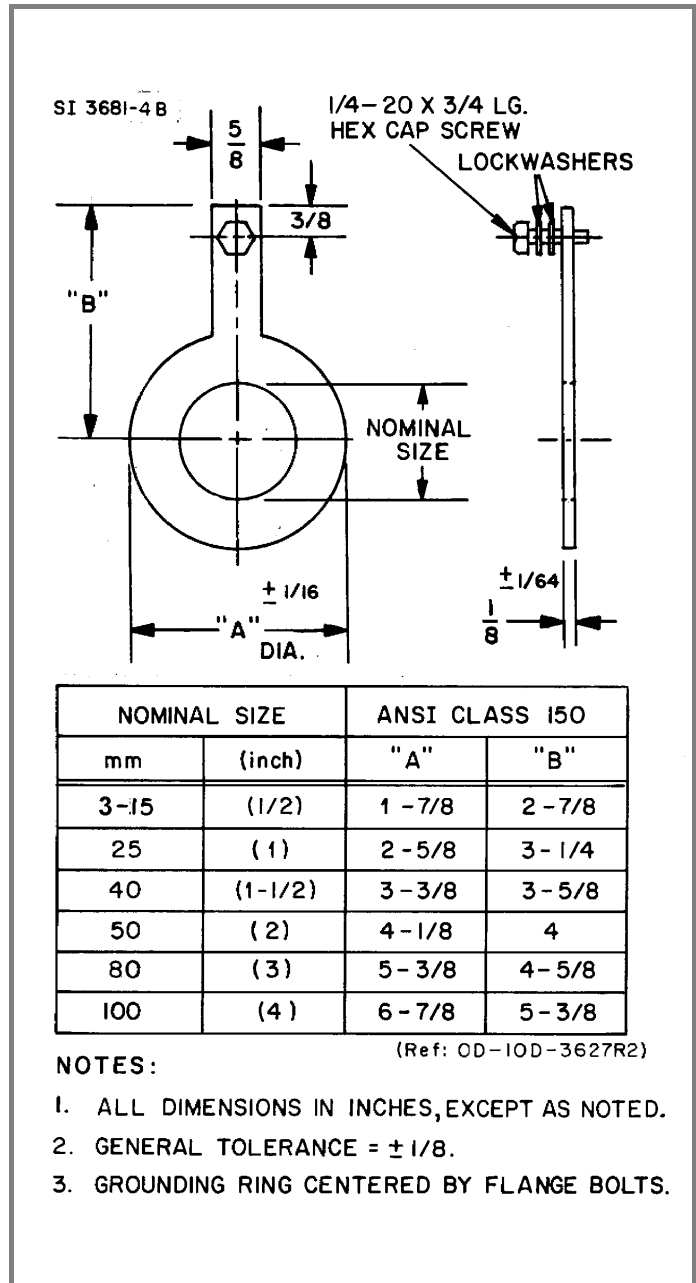


FIGURE 2-8. OUTLINE DIMENSIONS, GROUNDING RINGS *

* For applications other than ANSI Class 150, contact Bailey-Fischer & Porter.

NOTE:

METAL RING IN CONTACT WITH LIQUID (SUPPLIED BY USER). A QUANTITY OF 4 GASKETS ARE NEEDED FOR PROPER INSTALLATION OF THE 2 GROUNDING RINGS REQUIRED (SEE INSET). WHEN THE GROUNDING RINGS ARE PURCHASED FROM F&P, GASKETS ARE SUPPLIED.

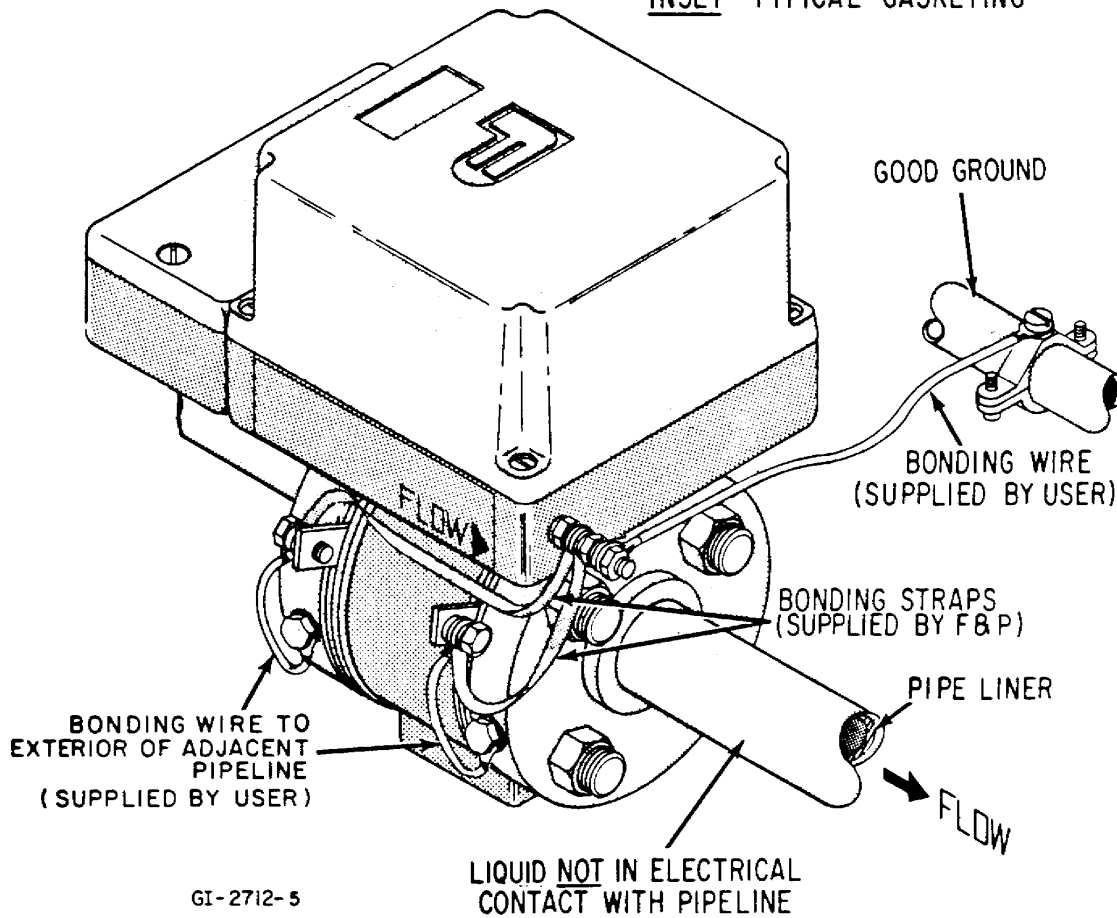
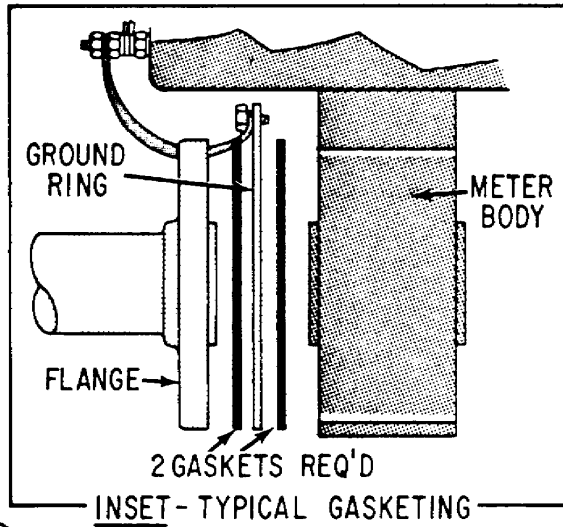


FIGURE 2-9. GROUNDING PROCEDURE, NON-CONDUCTIVE OR INSULATED PIPE

2.5 Electrical Interconnections

The Series 10D1475 Magnetic Flowmeter may be furnished with either an integrally or remotely mounted Signal Converter. Interconnection wiring is arranged differently for the two systems. Refer to interconnection diagrams provided in the Instruction Bulletin supplied with the appropriate Signal Converter for wiring details.

WARNING
ELECTRICAL SHOCK HAZARD. Equipment powered by AC line voltage presents a potential electric shock hazard to the user. Make certain that the system power input leads are disconnected from the operating branch circuit before attempting electrical interconnections.

Regardless of the interconnection procedure required, the grounding procedures given in Section 2.4 must be followed.

2.6 Conduit Seal and Pressure Relief

In accordance with the National Electrical Code (NEC) ANSI/NFPA 70, Article 501-5(f)(3), the flowmeters include a **conduit entry seal** and **pressure relief** to prevent the process liquid from entering the electrical conduit system. These safety features consider the remote possibility of a primary seal failure between the meter and the electronic housing.

The **conduit entry seal** will prevent the process liquid from entering the electrical conduit system. This seal consists of a conduit entry cable seal on the meter junction box. It is the user's responsibility to properly install the conduit entry cable seal fitting supplied with the Signal Converter interconnection cable. This will ensure proper performance of this safety feature. Refer to Figure 2-15.

A **pressure relief** is provided in the electronics housing of the flowmeter. The pressure relief is located in the center of the cover joint on the side opposite from the conduit connection. If the primary seal should fail, the pressure relief will vent the process preventing an over pressurization and potentially dangerous failure of the electronics housing. It is the user's responsibility to be aware of this safety feature and to consider the unlikely event of its functioning. Based on knowledge of the process and meter application, the user should consider the use of deflectors to safely direct the vented process.

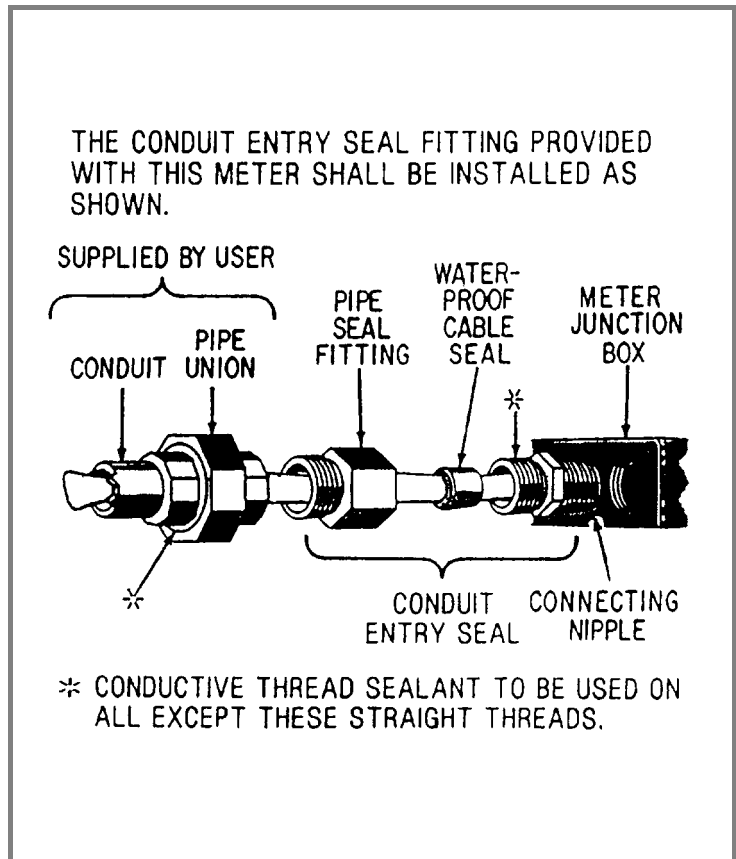


FIGURE 2-10. CONDUIT ENTRY SEAL INSTALLATION

3.0 START-UP

The Bailey-Fischer & Porter Series 10D1475 MINI-MAG Magnetic Flowmeter (which includes the integral or remote Signal Converter) is precision calibrated at the factory for the values stated on the instrument tag. If specific values were not specified, the meter is calibrated at some nominal maximum flow rate and for a 4-20 mA current output span. Typical instrument data tags are shown in Figures 3-1 & 3-2.

There are no operating controls that require field adjustment unless the full scale range setting was not specified when the meter was ordered. If a change in the full scale range setting is required, refer to the Instruction Bulletin supplied with the 10D1475H & 10D1475J Signal Converters. If no change is required, the equipment is ready for operation as received.

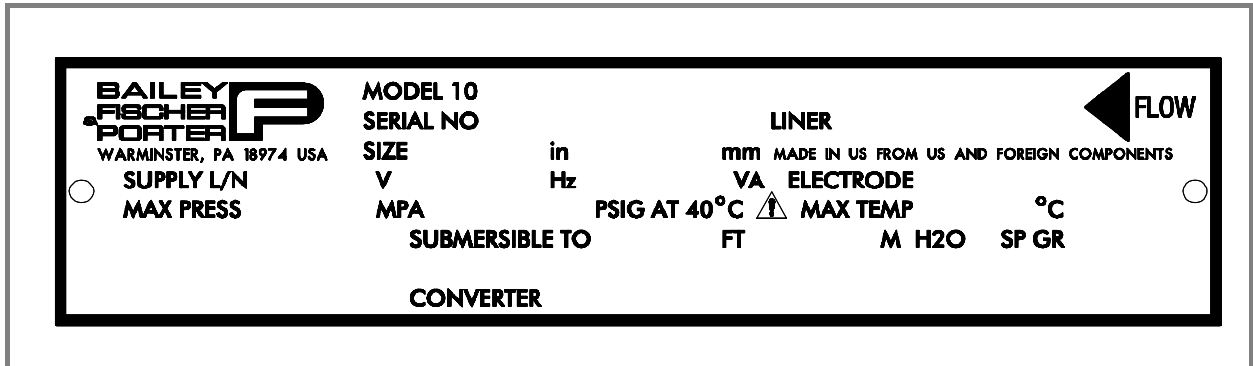


FIGURE 3-1. TYPICAL INTEGRAL PRIMARY 10D1475H DATA TAG

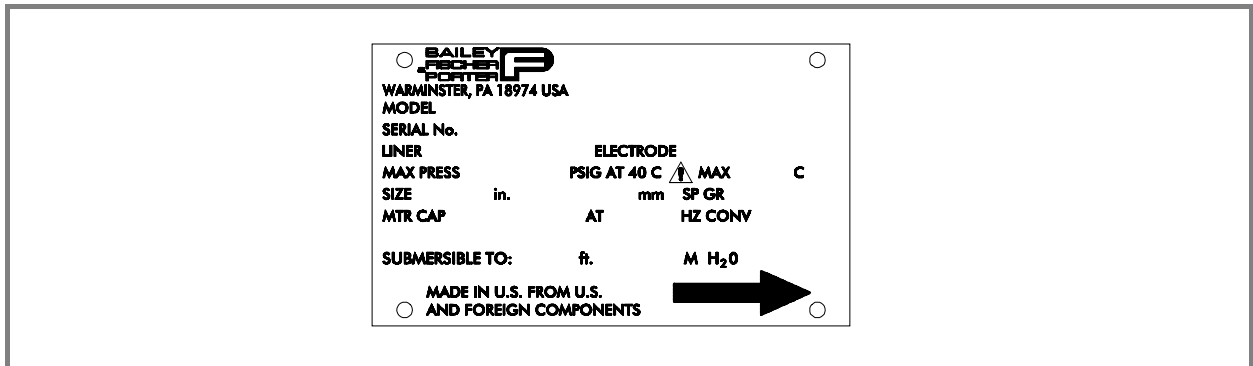


FIGURE 3-2. TYP. REMOTE PRIMARY 10D1475H & J DATA TAG

3.1 Preliminary Check List

Follow these start up instructions after completing the assembly and installation of the Primary and Converter:

- Check that the flow direction of the fluid agrees with the flow-direction arrow on the primary housing.
- Check that the flowmeter is properly grounded. See Section 2.4. Improper grounding may result in unsatisfactory performance.
- Check that the interconnections agree with the interconnection diagrams shown in the instruction bulletins supplied with the Converter.
- Check that the power supply agrees with the specifications on the data tag.
- Check that the ambient conditions meet the conditions specified in Section 1.4 - Specifications.

3.2 Turn Power On

WARNING
ELECTRICAL SHOCK HAZARD. Equipment powered by an AC line voltage presents a potential electric shock hazard. Servicing of the Magnetic Flowmeter or Signal Converter should only be attempted by a qualified electronics technician.

Apply system power to the Series 10D1475 Magnetic Flowmeter by closing the external switch or circuit breaker (not supplied with the meter); there are no master power switches inside of the equipment. Also energize any auxiliary equipment associated with the flow metering system such as remote analog recorders, controllers or rate indicators.

Once power is applied, the display should become active. Refer to the 50XM1000N and M2 Converter instruction bulletins for proper display indications and system adjustments.

If not already entered, some parameters must be entered for proper system operation (refer to the instruction bulletin supplied with the Converter):

- Verify the meter size stamped on the nameplate in the "Size" parameter.
- The range may have been factory-set to 10 m/s. Enter the desired maximum forward and reverse flow values in the appropriate units.
- Hydraulically ideal range end values are approximately 5-10 ft/sec (or 2-3 m/s).
- Select the desired output current range in the "Submenu Current Output".
- Set the number of pulses per unit, the pulse width and the totalizer mode from the Totalizer Submenu.

Check the system zero (Refer to Zero Check, Section 3.3).

3.3 Zero Check

The system zero must be set at the Converter. For this parameter, all flow activity through the flowmeter must be totally stopped. Make certain that the meter pipe of the primary is totally full of fluid. The zero can be set either manually or automatically at the Converter by accessing the parameter "System Zero". Refer to the instruction bulletin supplied with the Converter for the appropriate procedure.

3.4 Detector Empty Pipe (option)

The empty pipe module, when installed, should be adjusted at start up under actual conditions. Refer to Instructions in the Converter instruction bulletin. **(Not available for integral configuration)**

3.5 Start Process Flow

Start flow through the process piping system that includes the meter. Allow a nominal flow through the pipeline for several minutes to purge entrapped air. The pipeline must be full for accurate flow measurement. Flow measurement, display and concurrent output signal transmission will commence with process flow through the meter.

3.6 EEPROM (units with M2 Converter only)

All parameter values are stored in the main EEPROM located on the main board assembly under the Controller electronics module. If replacing the Primary in a remote system, remove the original EEPROM from the Controller and replace it with the EEPROM supplied with the replacement Primary. Follow "Load" or "Store" data menu procedures (whichever is applicable) detailed in the Converter instruction bulletin. On power-up, all data will be accepted and need not be entered again.

NOTE
After all parameters have been set and entered they should be saved in the external EEPROM, refer to the "Load" & "Store" menu commands in the M2 Converter instruction bulletin for more details.

3.7 Electronics

Refer to Figures 3-3 through 3-5 for illustrations of integral and remote-mounted electronics mounted on the Primary

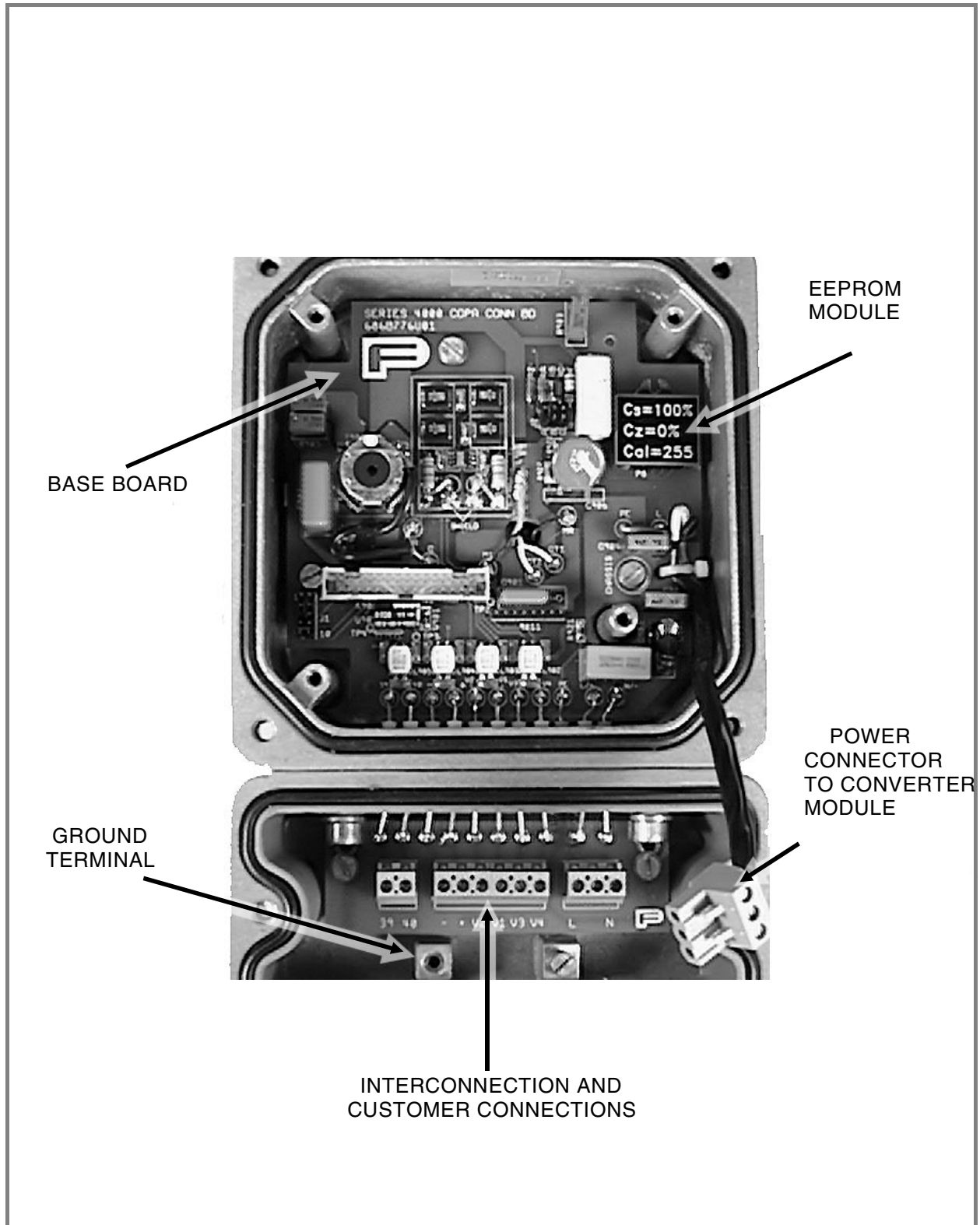
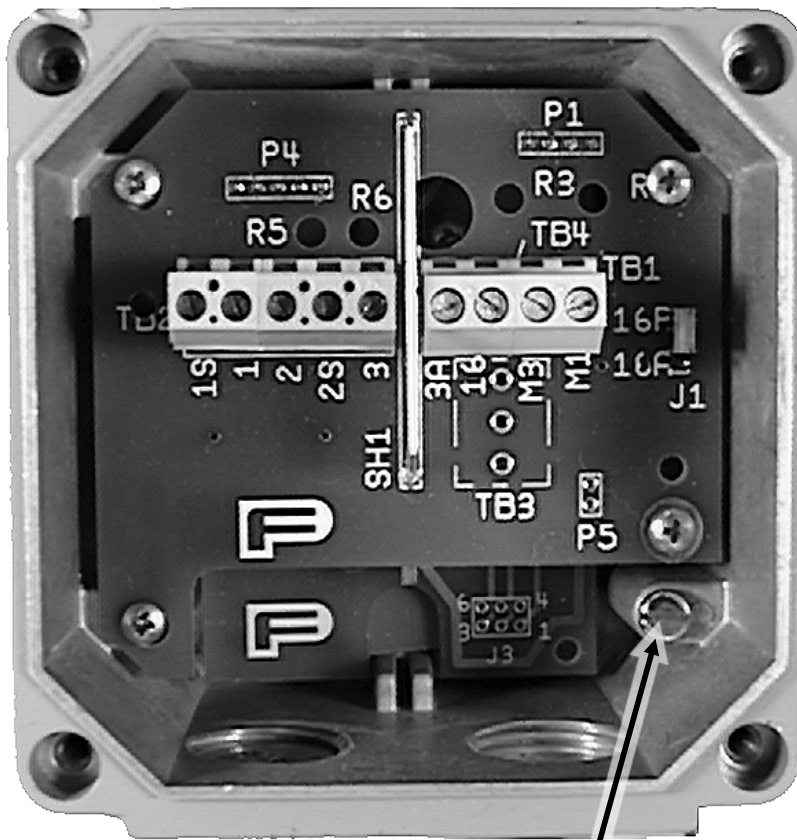


FIGURE 3-3. INTEGRALLY MOUNTED ENCLOSURE WITHOUT CONVERTER MODULE

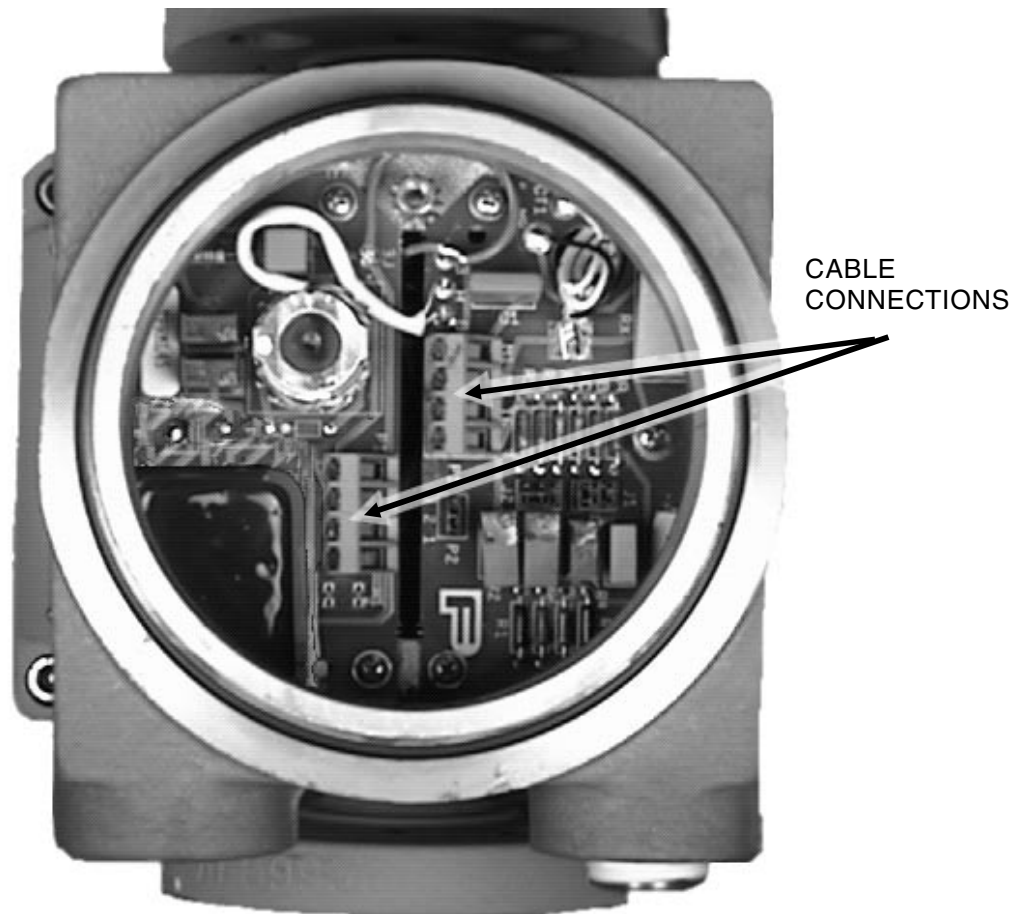


GROUND
TERMINAL

FIGURE 3-4. PRIMARY PCB ASSEMBLY IN 2-PIECE HOUSING

NOTE

Configuration shown is for Model 10D1475H. Model 10D1475J configuration is similar but not identical.



NOTE

The figure shows electronics without encapsulation material. Normally the housing is filled with a silicone rubber encapsulant.

FIGURE 3-5. EXPLOSION-PROOF OR CONTINUOUS SUBMERGENCE PRIMARY FOR REMOTE MOUNTED SIGNAL CONVERTER

NOTE

Configuration shown is for Model 10D1475J. Model 10D1475H configuration is similar but not identical.

4.0 CIRCUIT DESCRIPTION

4.1 Model 10D1475J

4.1.1 Primary Signals

The Model 10D1475J flowmeter uses remote 50XM1000 Converter electronics. The Magnetic Flowmeter body houses two signal electrodes and two flux producing magnet coils. All Flowmeter intraconnection wiring is terminated at the CMC/ZERO PC board located in the base of the meter housing.

The Flowmeter provides two output signals to the associated Signal Converter; one, an electrode signal that contains the flow rate information, and two, the reference signal which is proportional to the magnet excitation current (theoretically, this reference signal is proportional to the flux density in the metering section). The reference voltage is derived across a precision "constant meter factor" resistance network that is connected in series with the magnet coils. Changes in magnet drive voltage, which cause a variation of flow signal, will simultaneously cause a proportional variation of the reference voltage. The circuitry will provide an exact ratio and thereby provide immunity to power supply variation. The magnet coil drive circuitry is contained in the Signal Converter.

The (gated) magnet driver operates at a frequency that permits magnetic flux in the Flowmeter to reach a steady state level during the last 25% of each half period of magnet excitation. By using sampling techniques, the flow (differential mode) signal is measured only during the intervals that magnetic flux is constant:

$$\left(\frac{d\Phi}{dt} = 0 \right)$$

Therefore, zero instability due to changing flux is eliminated by use of the MAG-X design concept (sampling technique), providing a meter totally free of zero drift. A thorough discussion of Signal Converter operation is provided in the Instruction Bulletin supplied with the particular Signal Converter.

4.1.2 Constant Meter Capacity (CMC) PC Assembly

The CMC PC Assembly provides several functions. These include:

1. Establishing interconnections between the Flowmeter internal wiring and the Signal Converter.
2. Permitting factory adjustment of meter capacity values to a fixed value for each nominal size Flowmeter.
3. Permitting factory adjustment of Flowmeter zero.
4. Establishing proper wiring connections for remotely mounted Signal Converters.

4.2 Model 10D1475H

4.2.1 Primary Signals

Model 10D1475H flowmeter uses Model M2 Converter electronics and may be either integral or remote configuration. Primaries contain two flux producing coils wired in series and a pair of diametrically opposed electrodes mounted at 90 degrees to the coil flux plane. Meter coils are excited with approximately ± 10 volts of pulsed DC. A precision current sensing network is mounted in series with the coils. The current sense network produces what Bailey-Fischer & Porter refers to as a "Reference Voltage", which is typically ± 70 millivolts. The reference voltage is directly proportional to the strength of the magnetic field in the measuring tube and is measured by the Signal Converter. Reference voltage must be measured, since any variation in reference voltage will also produce a proportional change in electrode signal voltage, assuming an unchanged flow velocity.

Flowmeters of the pulsed DC type operate on the principle that unwanted electrode signals occur while the magnetic flux is changing. Accordingly, the signal converters have been designed to capture the electrode voltage only during that portion of the excitation cycle when the magnetic flux is constant. This interval occurs during the last 25% of each half excitation cycle. Pulsed DC operation of a magmeter system eliminates those variables capable of causing drift of the meter zero point.

4.2.1.1 Systems With Integral M2 Signal Converters

When the flowmeter system is fitted with an integrally mounted M2 microprocessor Converter, then a 686B776 PCB assembly is installed underneath the converter module. This assembly incorporates the following functional blocks:

- A precision Kelvin current sensing network in series with the coils
- An encapsulated AC coupled buffer preamplifier for each measuring electrode
- An EEPROM for retention of Primary span and zero correction factors
- Input/output lines for 4-20 mA current, scaled pulse or data link, contact inputs/outputs (by jumper configuration; see table)

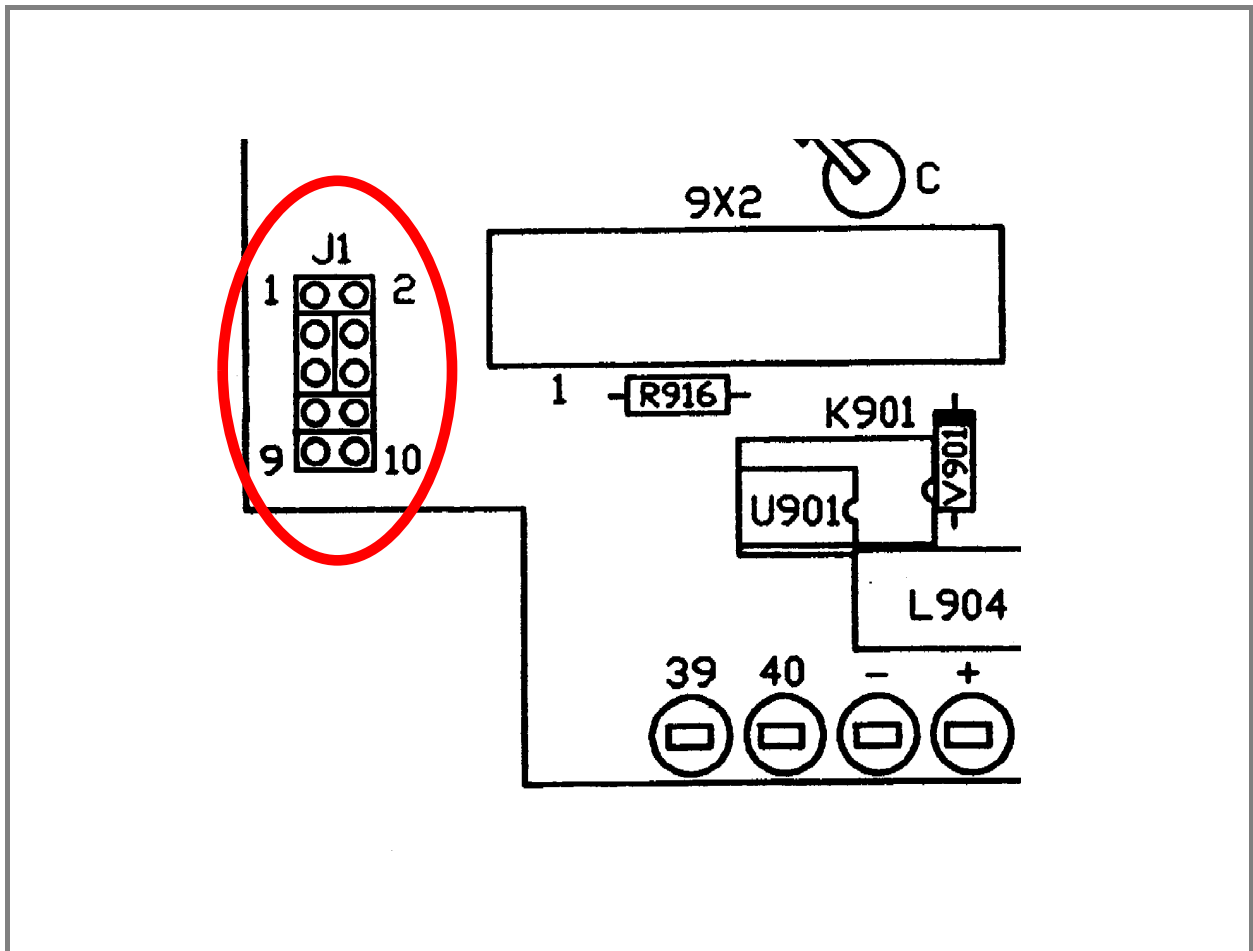
The resistive divider network which produces a converter reference voltage consists of a 0.9 ohm Kelvin resistor and a precision resistive divider network. The converter is designed to maintain the reference voltage at ± 70 mV, and this in turn causes approximately 200 or 400 mA (as set by jumpering) constant current to be delivered to the meter coils. The EEPROM is then programmed with the mathematical corrections necessary to obtain an exact "constant meter capacity per size".

For the M2 integrally mounted converters, certain options are established by the position of jumpers located on the lower left corner of the Primary Board. The jumper settings determine which combinations of functions appear on configurable input/output terminals 39 & 40 (emitter & collector respectively for opto-coupled output configurations). The specific function desired on these terminals must be selected using the software menus in the Signal Converter. The following table and diagram correlate the functions with the jumper positions:

TABLE 4-1. TERMINAL FUNCTION vs. JUMPER SETTINGS

Optional Combinations	Input / Output	J1 Terminals to be Connected
Zero return / External Totalizer Reset	Input	7-8, 4-6 and 3-5
Alarm / Opto-Coupled Scaled Pulse	Output	2-4, 1-3 and 8-10
Forward / Reverse Flow Indication	Output	2-4, 1-3 and 7-9

FIGURE 4-1 shows the location of the jumper block on the circuit board assembly.



**FIGURE 4-1. LOCATION OF OPTION JUMPERS
(686B776 ___ BOARD ASSEMBLY))**

4.2.1.2 Systems With Remotely Mounted M2 Converters

Systems fitted with remotely mounted M2 converters utilize the 686B804 Primary connection board stacked underneath a 686B790 customer connection board. The 686B804 contains connection pads to bring electrode and coil leads up to the customer area. Also, each electrode has an energy limiting barrier resistor in series with it. Thus, for remote systems using M2 converters, a simplified cabling scheme between primary and secondary consists of a circuit common, a safety ground, two electrode leads, and two coil leads.

5.0 MAINTENANCE

5.1 General

Except for an occasional performance verification check, there is no required routine maintenance for the Model 10D1475 meters. The Flowmeter body is of all welded construction. In the event a malfunction occurs in the primary, the meter body must be replaced. If supplied, the integrally mounted Signal Converter Assembly is removable for maintenance or replacement purposes.

Bailey-Fischer & Porter offers a Repair/Exchange Program to facilitate replacement of a defective meter or Converter. If the equipment is beyond the warranty limit, under this program a fixed price will be charged for replacement of defective equipment with appropriate credit issued when the repairable unit is received by Bailey-Fischer & Porter (charges prepaid). The equipment available under this program is as follows:

- the complete Flowmeter with integrally mounted Signal Converter and installation hardware
- the Flowmeter and primary board, without the Signal Converter
- the Signal Converter assembly

The Signal Converter uses complex electronic circuit components. Generally, due to the complexity of troubleshooting integrated circuit devices, maintenance beyond the assembly level is not recommended. Also, caution must be used when connecting test probes, as even a momentary accidental short circuit may damage or destroy an integrated circuit device. Therefore, only trained electronic technicians who are familiar with CMOS technology and have a background in logic and gating circuitry should be permitted to service this equipment.

In the event of a malfunction in the Signal Converter assembly, a replacement pc assembly can be quickly substituted for the defective assembly, thereby minimizing system down-time. Servicing by substitution of spare assemblies is generally more economical than stocking a large variety of IC chips, transistors, diodes, etc. Also, test equipment requirements and the level of technical expertise necessary are minimized. Should any doubt arise regarding the proper procedure for solving an existing problem, it is suggested that the user contact his local Bailey-Fischer & Porter service facility for technical assistance.

CAUTION

Some of the IC devices used in the signal converter are static sensitive and may be damaged by improper handling. When adjusting or servicing the signal converter, use of a grounded wrist strap is recommended to prevent inadvertant damage to the integral solid state circuitry.

WARNING

All Flowmeters and/or Signal Converters being returned to Bailey-Fischer & Porter for repair must be free of any hazardous materials (acids, alkalis, solvents, etc.). A Material Safety Data Sheet (MSDS) for all process liquids must accompany returned equipment. Contact Bailey-Fischer & Porter for authorization prior to returning equipment.

NOTE

Operation and maintenance procedures for the 10D1475H & 10D1475J Signal Converters are provided in the Instruction Bulletin supplied with the Signal Converter.

When communicating with Bailey-Fischer & Porter in regard to replacement of a complete meter (with integrally mounted Converter), the meter body, or the Signal Converter, it is important to refer to the complete instrument serial number to assure that the correct replacement will be supplied. The subject information is provided on the manufacturing specification sheet supplied with the Magnetic Flowmeter, and on the instrument data tags.

5.2 System Troubleshooting

In the event faulty operation of the Magnetic Flowmeter is evident, the following procedure can be used as a guide to isolate the malfunctioning device to either the Flowmeter or the Signal Converter. A standard multimeter and an oscilloscope are suitable for making the test measurements.

To supplement the following discussion refer to the applicable Signal Converter Instruction Bulletin.

WARNING

Equipment powered by an AC line voltage presents a potential electric shock hazard. Servicing of the Magnetic Flowmeter or Signal Converter should only be attempted by a qualified electronics technician.

1. If improper meter operation is suspected, proceed as follows:

- a) Remove access covers from the junction box and the Converter housing (remote or integral).
- b) Inspect for evidence of water entry in junction box and Converter housing.

If water entry is present, de-energize system at power source. Inspect conduit seals and cover gaskets for possible source of water entry. Replace the seals and/or gaskets if evidence of water entry is indicated. Allow interior of junction box and Converter housing to dry completely before restoring system power.

2. The Signal Converters which may be supplied with the Series 1475 meters are:

- Integrally or remotely mounted Microprocessor-Based Model M2 Signal Converter
- Remotely mounted Microprocessor-Based Model 50XM1000N Signal Converter

Since signal wiring and operating procedures are dependent upon the type of Converter and the mounting option selected, the user should refer to the Instruction Bulletin supplied with the M2 or 50XM1000N Signal Converters for system troubleshooting procedures. A static performance test for the flowmeter mounted components is discussed in Section 5.3.

3. Possible causes of erroneous flow rate indication are:

- incorrect grounding
- excessive noise due to a heavy slurry process or a non-homogeneous process
- loose or intermittent wiring
- non-full or empty meter pipe
- excess air entrained in process liquid

5.3 Static Test

If improper operation of the Magnetic Flowmeter is suspected, the following resistance measurements can be made to establish whether an electrical malfunction has occurred. A standard multimeter is suitable for making the resistance checks. These measurements can be made at the Connection board located in the base of the electronic housing.

WARNING
Equipment that operates from AC line voltage constitutes a potential electric shock hazard to the user. Make certain that the system power is disconnected before making the following ohmmeter checks.

5.3.1 Magnet Coil Check

There are two magnet coils in the meter that are connected in a series arrangement. The respective coil leads are brought up to lugs "M1" and "MR" (or "M3") on the Connection board in the meter electronics base.

Before making resistance measurements, verify that the system power service has been de-energized. Remove the electronics housing cover to obtain access to the Connection board.

If a remotely mounted Signal Converter was supplied, proceed to step 1. If the Magnetic Flowmeter is supplied with an integrally mounted Signal Converter, loosen and remove the four screws that hold the Signal Converter to the base. Disconnect the plugs supplying signal (P1) and power (P3) connections to the Converter and set the Converter aside. This will enable access to the Connection board.

- 1) Set the ohmmeter to its lowest range; e.g., R x 1.
- 2) Connect the Ohmmeter test leads to terminal lugs M1 and MR (or M3) on the Connection board. The value displayed should correspond to the value indicated in Table 5-1 ($\pm 20\%$).
- 3) Connect the Ohmmeter test leads to terminal lugs CT and MR (or M3). The value displayed should correspond to that obtained in Step 2 and the value indicated in Table 5-1 within $\pm 20\%$.

TABLE 5-1. PRIMARY COIL RESISTANCE

Meter Size		Coil Resistance, M1 to MR
inch	mm	Ohms (nominal)
1/10	3	45
5/32	4	45
1/4	6	45
3/8	10	45
1/2	15	45
1	25	54
1 1/2	40	48
2	50	48
3	80	54
4	100	62

5.3.2 Electrode Check

The electrode check is essentially a resistance measurement that can be made to establish that a short (or high resistance leakage path) does not exist between one, or both, electrodes and the meter body.

Before proceeding, verify that system power has been de-energized. To perform this test, the meter must be removed from the pipeline and the meter liner "wiped" dry. When the meter liner has been thoroughly dried, proceed as follows:

- 1) If integral Signal Converter supplied, begin with step **a**, below. If a remotely mounted Signal Converter is supplied, begin with step **b**.
 - a) Remove meter housing cover from electronics compartment. Loosen the four mounting screws that secure the integral Signal Converter to the meter base. Disconnect plugs P1 and P3; set the Converter aside. Proceed to step 2.
 - b) Remove field wiring connected to electrode leads "1" and "2". Proceed to step 2). Electrode wiring is shown in Figure 4-1 and 4-2, as applicable.
- 2) Place Ohmmeter on highest available range (for example, R x 10,000).
- 3) Connect the Ohmmeter "minus" lead to the meter ground stud and the "plus" lead to electrode line 1. This reading should be infinite. If any resistance can be measured, the meter is defective and must be replaced.
- 4) Check the other electrode by connecting the Ohmmeter "plus" lead to line 2. This reading must also be infinite. If any resistance can be measured, the meter is defective and must be replaced.
- 5) If measurement of both electrodes indicates an infinite resistance reading, the meter may then be returned to on-stream operation after wiring has been restored. Re-install the integrally mounted Signal Converter, if applicable, and replace housing cover.

NOTE

If the Signal Converter has been removed from the housing, use care when reconnecting the Converter interface cable to ensure that plug P1 is in proper alignment with the pins of receptacle J1. (J1 is located on the base board in either the Flowmeter or the remote Converter housing, as the case may be.) If these connectors do not mate correctly, the Signal Converter will be inoperable and could be damaged when power is applied.

5.3.3 Flowmeter Board (Model 10D1475J)

The Flowmeter board is located in the base of the electronics housing. This pc board includes the constant meter factor/size network. The constant meter factor/size network functions to standardize the particular flowmeter; i.e., provide a constant meter capacity that will be the same for all meters of the same size.

The constant meter factor/size network is factory set by precise calibration prior to shipment. This calibration procedure (used to establish the exact setting for the particular constant meter factor/size network) compensates for variations resulting from manufacturing tolerances. Hence, the value of constant meter factor/size network on each primary board is unique and may be applicable only for the particular flowmeter for which it was supplied.

6.0 Parts List

6.1 Grounding Rings

TABLE 6-1. ANSI CLASS 150 GROUNDING RINGS

Meter Size		F&P Part Number*	Part Number Suffix (Material)			
mm	inch		316 sst	Hast. "C"	Hast. "B"	Alloy 20
3 - 15	1/10 - 1/2	800D508	U01	U09	U34	U27
25	1	800D508	U02	U10	U18	U24
40	1 1/2	800D508	U03	U11	U35	U28
50	2	800D508	U04	U12	U20	---
50	2	800D575	---	---	---	U07
80	3	800D508	U05	U13	U36	---
80	3	800D575	---	---	---	U08
100	4	800D508	U06	U14	U37	---
100	4	800D575	---	---	---	U09

* To complete the part number, add suffix from table; e.g., 800D508U02 for ordering one set (2) of 25 mm (1 in.) 316 sst grounding rings.

6.2 Gaskets

TABLE 6-2. GASKETS FOR ANSI CLASS 150 GROUNDING RINGS (2 Required)

KLINGER SIL C-4401-----Part Number 333J089__*

TEFLON-----Part Number 333J092__*

Flange Rating ANSI CL150	Meter Size					
	1 - 15 mm 1/25 - 1/2inch	25 mm 1 inch	40 mm 1 1/2 inch	50 mm 2 inch	80 mm 3 inch	100mm 4 inch
Suffix	U01	U10	U15	U19	U22	U29

* To complete the part number, add suffix from table; e.g., 333J089U10 for 25mm (1 inch) meter with KLINGER SIL gaskets.

For applications other than ANSI CLASS 150 Flanges contact Bailey-Fischer & Porter.

TABLE 6-3. GASKETS FOR METER BODY (2 required)

KLINGER SIL C-4401-----Part Number 333J089___*
 TEFLON-----Part Number 333J092___*

Flange Rating	Meter Size						
	3 - 10 mm 1/10 - 3/8 in	15 mm 1/2 inch	25 mm 1 inch	40 mm 1 1/2 inch	50 mm 2 inch	80 mm 3 inch	100 mm 4 inch
ANSI CL 150	U01	U01	U10	U15	U19	U22	U29
ANSI CL 300	U02	U02	U11	U16	U25	U26	U30

* To complete the part number, add suffix from table; e.g., 333J089U10 for 25mm (1 inch) meter with KLINGER SIL gaskets.

6.3 Adapter Sleeves

TABLE 6-4. ADAPTER SLEEVE

Part Number 430E020___*

Flange Rating	Meter Size						
	3 - 10 mm 1/10 - 3/8 in	15 mm 1/2 inch	25 mm 1 inch	40 mm 1 1/2 inch	50 mm 2 inch	80 mm 3 inch	100 mm 4 inch
ANSI CL 150	N/R	N/R	N/R	N/R	U04	U04	U05
ANSI CL 300	U01	U02	U03	U03	U06	U07	U07

* To complete the part number, add suffix from table; e.g., 430E020U03 for 25mm (1 inch) meter with ANSI CL 300 pressure rating.

N/R = None Required

6.4 Studs & Nuts

TABLE 6-5. STUDS & NUTS (1 Required)

STEEL-----Part Number 614B650____ *

Flange Rating	Meter Size						
	3 - 10 mm 1/10 - 3/8 in	15 mm 1/2 inch	25 mm 1 inch	40 mm 1 1/2 inch	50 mm 2 inch	80 mm 3 inch	100 mm 4 inch
ANSI CL 150	U01	U01	U01	U04	U07	U09	U14
ANSI CL 300	U01	U01	U03	U05	U08	U10	U15

6.5 Cable Entry Seals

6.5.1 Conduit Entry Seal

P/N 699B390U02 - For use with 1/2 NPT conduit - 2 seals provided (one for each entry port)

6.5.2 Cable Entry Seal

P/N D150A004U01 - For wiring cable without conduit using PG13 fittings (Provides seals for one entry port only - 2 kits required)

P/N 1D150Z1053 - (Dust Cover - 2 required)



DOCUMENTATION QUESTIONNAIRE

Your answers to the questions below and other comments assist us in publishing better documentation. If an answer requires explanation please use the space provided. All comments and suggestions become the property of Elsasg Bailey Process Automation.

1. Title of Document? 10D1475H & J INSTRUCTION BULLETIN PN24940

2. Does this document meet your needs? _____

3. Is the information:

Easily understandable? _____

Properly organized? _____

Complete? _____

Sufficiently illustrated? _____

OTHER COMMENTS

(Please include page and/or figure number.)

Name _____

Address _____

**No postage necessary
if mailed in the U.S.A.**

**If Bailey employee, please include
department number.**

CUT ALONG LINE, FOLD, STAPLE



FOLD 1



NO POSTAGE
NECESSARY
IF MAILED
IN THE
UNITED STATES

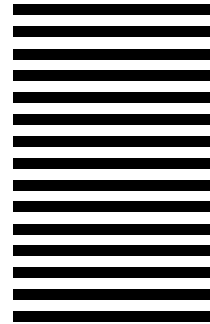
BUSINESS REPLY MAIL

FIRST CLASS PERMIT NO. 86 WARMINSTER, PA

POSTAGE WILL BE PAID BY ADDRESSEE:

**BAILEY-FISCHER & PORTER
DEPARTMENT 261 / A2
125 EAST COUNTY LINE ROAD
WARMINSTER, PA 18974**

Attention: Technical Publications



FOLD 2

STAPLE
HERE

PN24940



The Company's policy is one of continuous product improvement and the right is reserved to modify the information contained herein without notice.
© 2000 ABB Automation Inc. Printed in USA

ABB Automation Inc.
125 East County Line Road
Warminster, PA 18974 USA
Tel. 215-674-6000
FAX: 215-674-7183

ABB Instrumentation Ltd
Howard Road, St. Neots
Cams. England, PE19 3EU
Tel. +44 (0) 1480-475-321
FAX: +44 (0) 1480-217-948

ABB Instrumentation S.p.A
Via Sempione 243
20016 Pero (Milano) Italy
Tel: +39 (02) 33928 1
Fax: +39 (02) 33928 240

ABB Automation Products GmbH
Industriestr. 28
D-65760 Eschborn Germany
Tel: +49 (0) 6196 800 0
Fax: +49 (0) 6196 800 1849