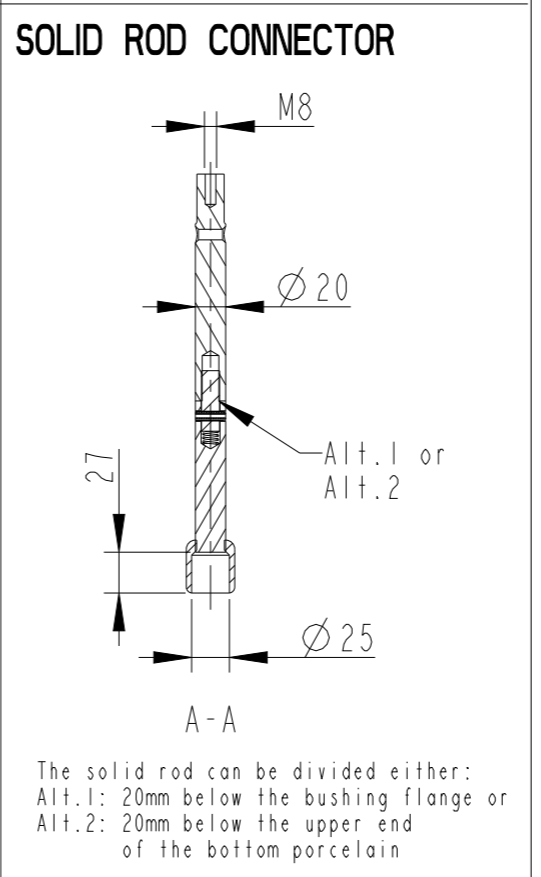
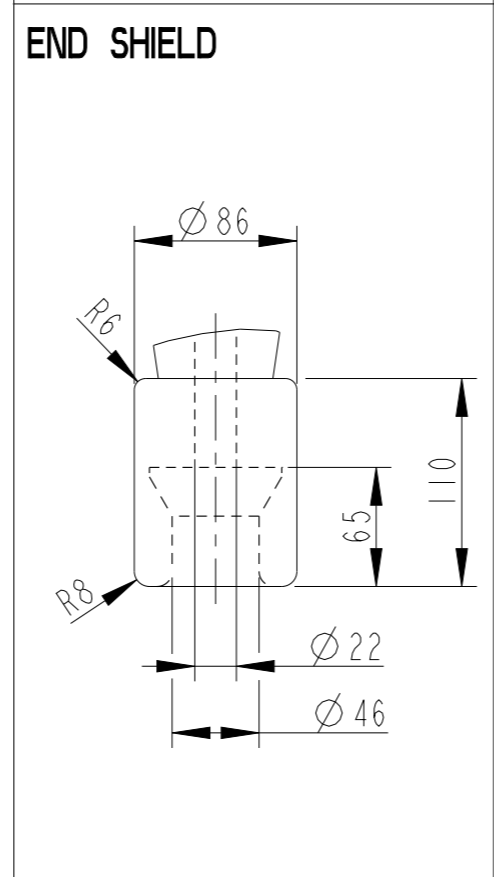
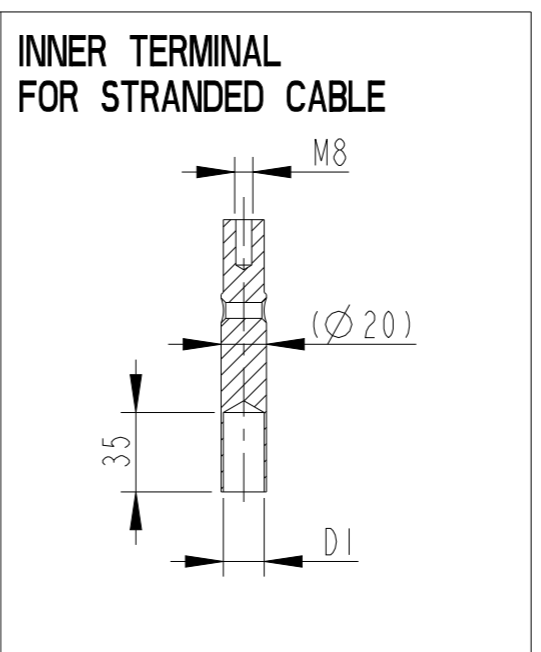
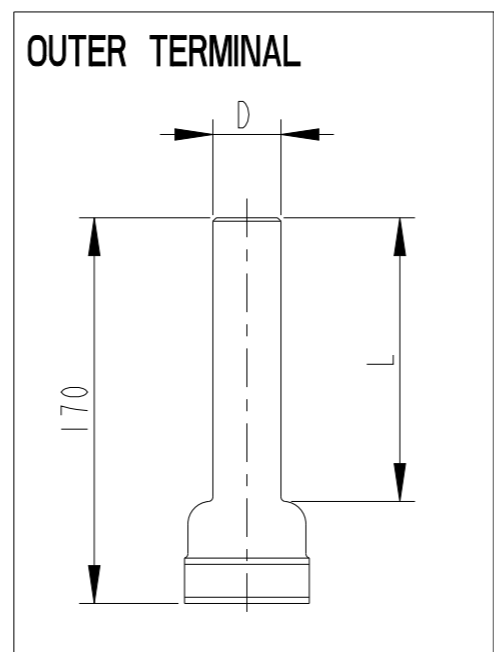
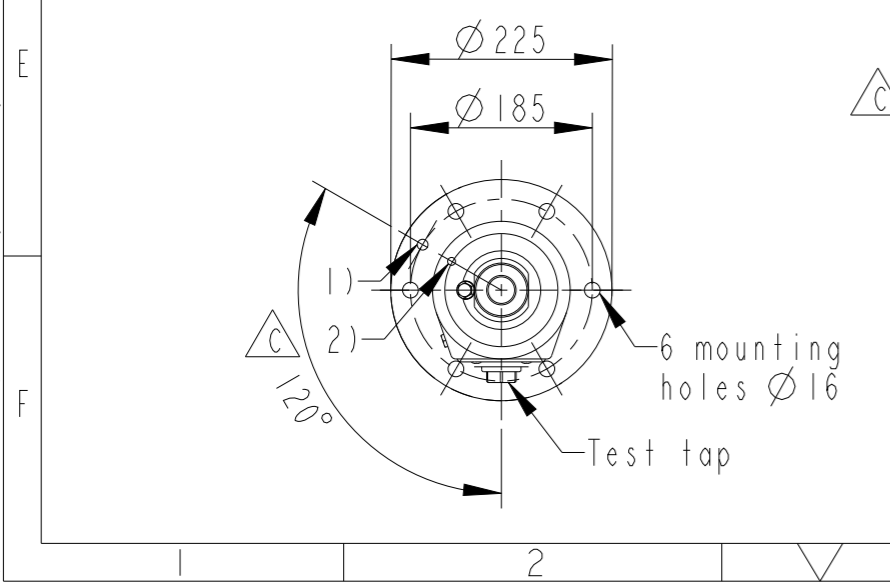
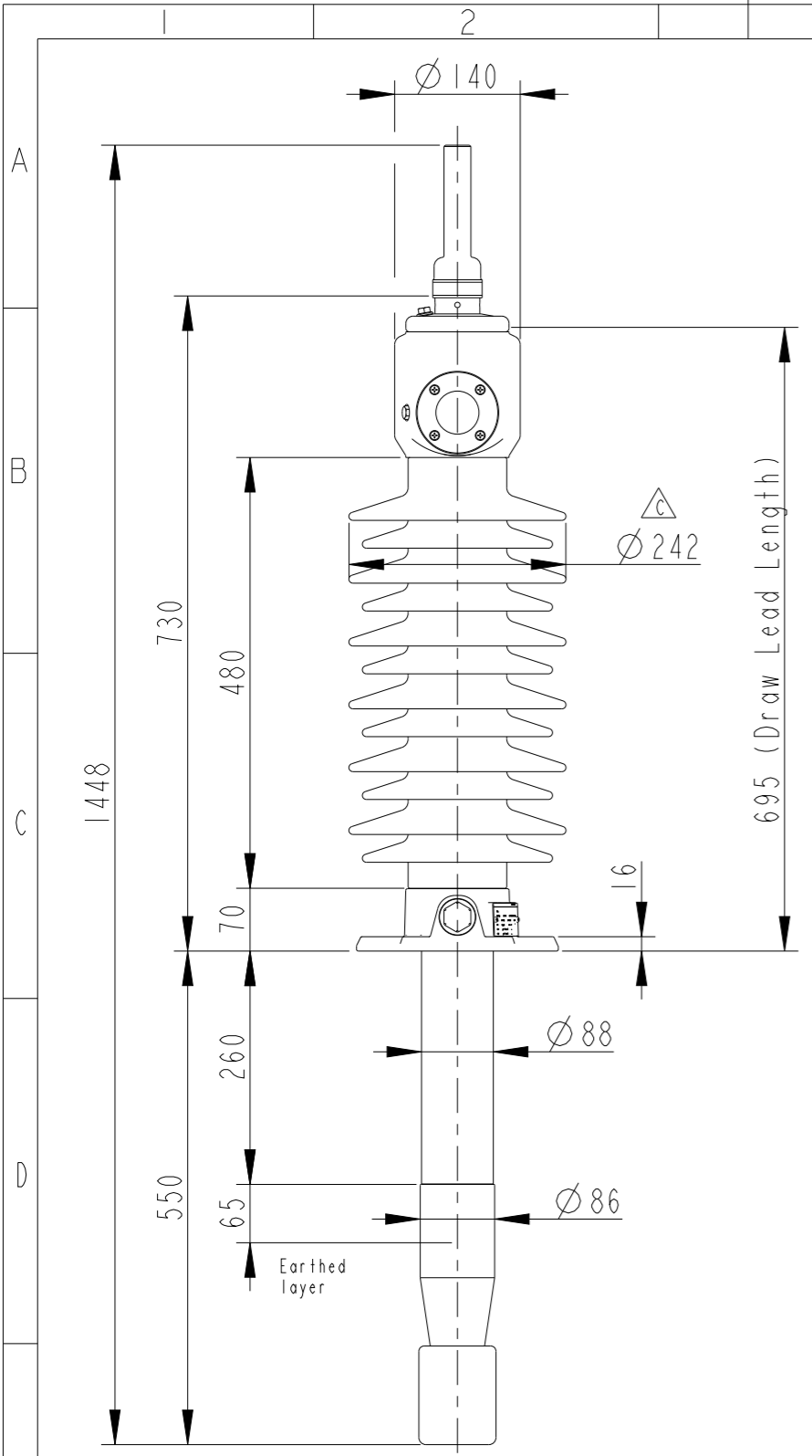


This document is issued by means of a computerized system. The digitally stored original is electronically approved. The approved document has a date entered in the "Approved"-field. A manual signature is not required.

We reserve all rights in this document and in the information contained therein. Reproduction, use or disclosure to third parties without express authority is strictly forbidden.



Note:  
 1) M12 (For Earthing)  
 2)  $\varnothing 4$  oil connection hole (only valid for horizontal mounting)

		Ludvika, Sweden	
No.			
Um	kV Ir	A 50/60 Hz	
BIL	kV SIL	kV AC	kV
M	kg L	mm	°
C1	pF Tan $\delta$		x
C2	pF Tan $\delta$		x

Revision Revision text  
 C Bushing data ,Ordering data & Dims updated

#### Bushing Data:

Rated Voltage	52	kV
Phase-to-Earth Voltage	$\triangle 30$	kV
Dry Lightning Impulse 1,2/50 $\mu$ s	250	kV
Wet power frequency AC	105	kV
Routine test Imin dry 50Hz	120	kV
Rated Current	800	A
Creepage Distance	1690 $\pm$ 50	mm
Creepage Distance Protected	580	mm
Mass	$\triangle 35$	kg

#### Ordering Data:

<b>BUSHING</b>	COLOUR AIR INSULATOR	
LF123173-M	BROWN	
LF123173-N	LIGHT GREY	
LF123173-HM $\triangle$	BROWN	Horizontal 45°-90°
LF123173-HN $\triangle$	LIGHT GREY	Horizontal 45°-90°

#### OUTER TERMINAL

	Material	D	L
LF 170 002-A	Cu Alloy	$\varnothing 30$	125
LF 170 001-A	Al	$\varnothing 30$	125

#### INNER TERMINAL FOR STRANDED CABLE

OTHER TYPES ON REQUEST

<b>For brazing</b>	Conductor area	D1
LF 170 011-S	up to 150mm <sup>2</sup>	$\varnothing 18$
LF 170 011-U	Undrilled with pilot hole	$\varnothing 5$
<b>For crimping or brazing</b>	Conductor area	D1
LF 170 010-M	50mm <sup>2</sup>	$\varnothing 11$
LF 170 010-N	70mm <sup>2</sup>	$\varnothing 13$
LF 170 010-L	95mm <sup>2</sup>	$\varnothing 15$

#### SOLID ROD CONNECTOR

	Material
LF 170 019 -AS for Alt.1	Cu
LF 170 019 -AT for Alt.2	Cu

Created by Sri Ambicai	Reviewed by Joakim Persson	Approved by Natalia Gutman
Approved 2022-01-10	Document Kind Assembly Drawing	Based on doc.id -
Company Hitachi Energy Sweden AB	Title, Supplementary title GOB 250-800-0.3	
Responsible Department SEABB-9AAE300824	With oil level gauge. Long end shield.	
<b>ABB</b>	Document id 2751369-172	Status Approved
	Revision C	Iteration 4
		Sheet 1/1