

We reserve all rights in this document and in the information contained therein. Reproduction, use or disclosure to third parties without express authority is strictly forbidden. © ABB 19

Pos. Läge	R connects förbinder	H connects förbinder
19	13-14	2-15
18		3-15
17		4-15
16		5-15
15		6-15
14		7-15
13		8-15
12		9-15
11A		10-15
11		11-15
10	12-14	13-15
10A		1-15
9		2-15
9A		3-15
8		4-15
7		5-15
6		6-15
5		7-15
4		8-15
3		9-15
2	10-15	
1		

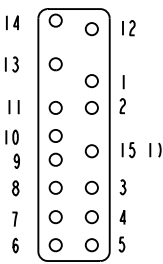
A position with letter is a through position and gives the same voltage as the normal position.

Läge med bokstav är ett genomloppsläge och ger samma spänning som normalläget.

1) Connections between the terminals 15 of the three phases are included in the star-point type.

Förbindningar mellan uttag 15 i de tre faserna ingår i nollpunktsutförandet.

Terminal board
Plint



Section A-A
Sektion A-A

On-load tap-changer type UZED., UZFD., 19 tap positions, coarse/fine switching.

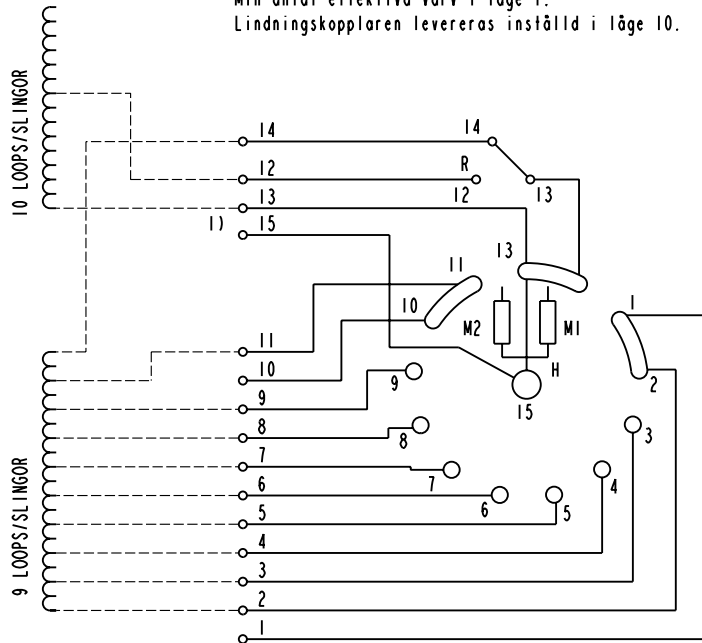
Min effective No. of turns in pos. 1.

The tap-changer is delivered set in pos. 10.

Lindningskopplare typ UZED., UZFD., 19 lägen, grov/fin-koppling.

Min antal effektiva varv i läge 1.

Lindningskopplaren levereras inställd i läge 10.

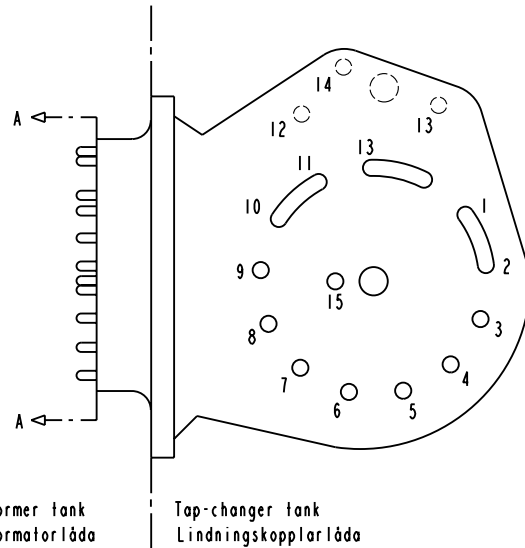


The tap-changer is shown in pos. 10
Lindningskopplaren visad i läge 10

R Change-over selector
Grov/fin-omkopplare

H Main contact
Huvudkontakt

M1, M2 Transition contacts
Motståndskontakter



Sheet	Cont
Year	Week
Dept	
Rev	Ind
Revision	Appd Year Week
Accepted by	Accepted for prod by
Design checked by	Drawn by
Design checked by	Issued by Dept Year Week



Asea Brown Boveri

Description (English)
CONNECTION DIAGRAM

Description (own language)
KOPPLINGSSHEMA

DATA ORIGINAL

File name
0398-4

Lang Sheet

1

Rev Ind Cont

-

5492 0398-4