

# MCCB Migration

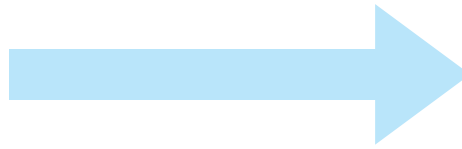
## Tmax T – T4 to Tmax XT – XT4

Tmax XT, the next generation of molded case circuit breakers from ABB, is now available. The Tmax XT offers increased capacities for interrupting ratings and voltages as well as application versatility with new trip units, accessory and mounting options; all in a compact and easy to use package. This guide has been created to assist with the migration of the existing Tmax T series of breakers to the new Tmax XT series. For more detailed information, please consult the Tmax XT technical catalog.

Tmax T – T4



Tmax XT – XT4



T4	Frame	XT4
250A	<b>Amperage</b>	250A
2 p, 3p & 4p	<b># of Poles</b>	2p, 3p & 4p
80% all, 100% all	<b>Rating</b>	80% all, 100% all
25, 35, 65, 100, 150	<b>kA @ 480V AC</b>	25, 35, 65, 100, 150, 200
18, 25, 35, 65, 100	<b>kA @ 600V AC</b>	18, 22, 25, 50, 65, 100
16, 25, 35, 50, 65	<b>kA @ 600V DC</b>	35, 50, 65, 75, 85
TMF/TMD/TMA, MCP, MCS LS/I, LSI, LSIG, I	<b>Trip Units</b>	TMF/TMA, MCP, MCS LS/I, LSI, LSIG, E-LSIG, I, M-LIU
F, P, W	<b>Versions</b>	F, P, W
4.13" x 4.07" x 8.07"	<b>Dims (3p F WxDxH)</b>	4.13" x 3.25" x 6.3"

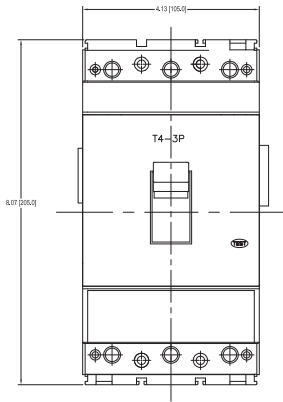
### Benefits of XT4

- 200kA interrupting rating at 480V to meet a greater variety of specification/application needs
- 37% size reduction with outstanding capacity in both AC and DC
- Ekip E-LSIG trip units offer protection plus a simplified measuring option
- Advanced communication and software capability ready

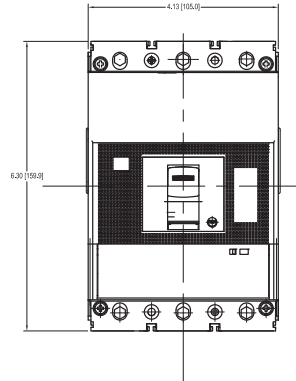
To configure and price a Tmax XT or other ABB circuit breaker, please use the online configurator tool at:  
[www.abb.us/lowvoltage-configurator](http://www.abb.us/lowvoltage-configurator)

# Panel mounting comparison – fixed version, 3p

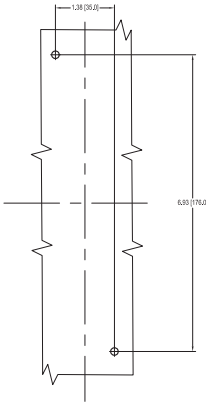
## T4 overall dimensions



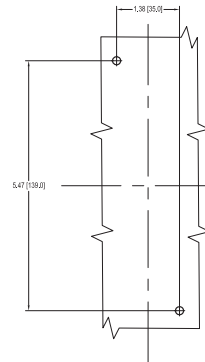
## XT4 overall dimensions



## T4 mounting holes



## XT4 mounting holes



## Contact us

### ABB

Low Voltage Products  
8155 T&B Boulevard  
Memphis, TN 38125  
[www.abb.com/lowvoltage](http://www.abb.com/lowvoltage)

USA Technical Support: 888-385-1221  
Customer Service: 888-862-3290  
7:00 a.m. to 5:30 p.m., CST, Monday – Friday  
[lvps.support@us.abb.com](mailto:lvps.support@us.abb.com)