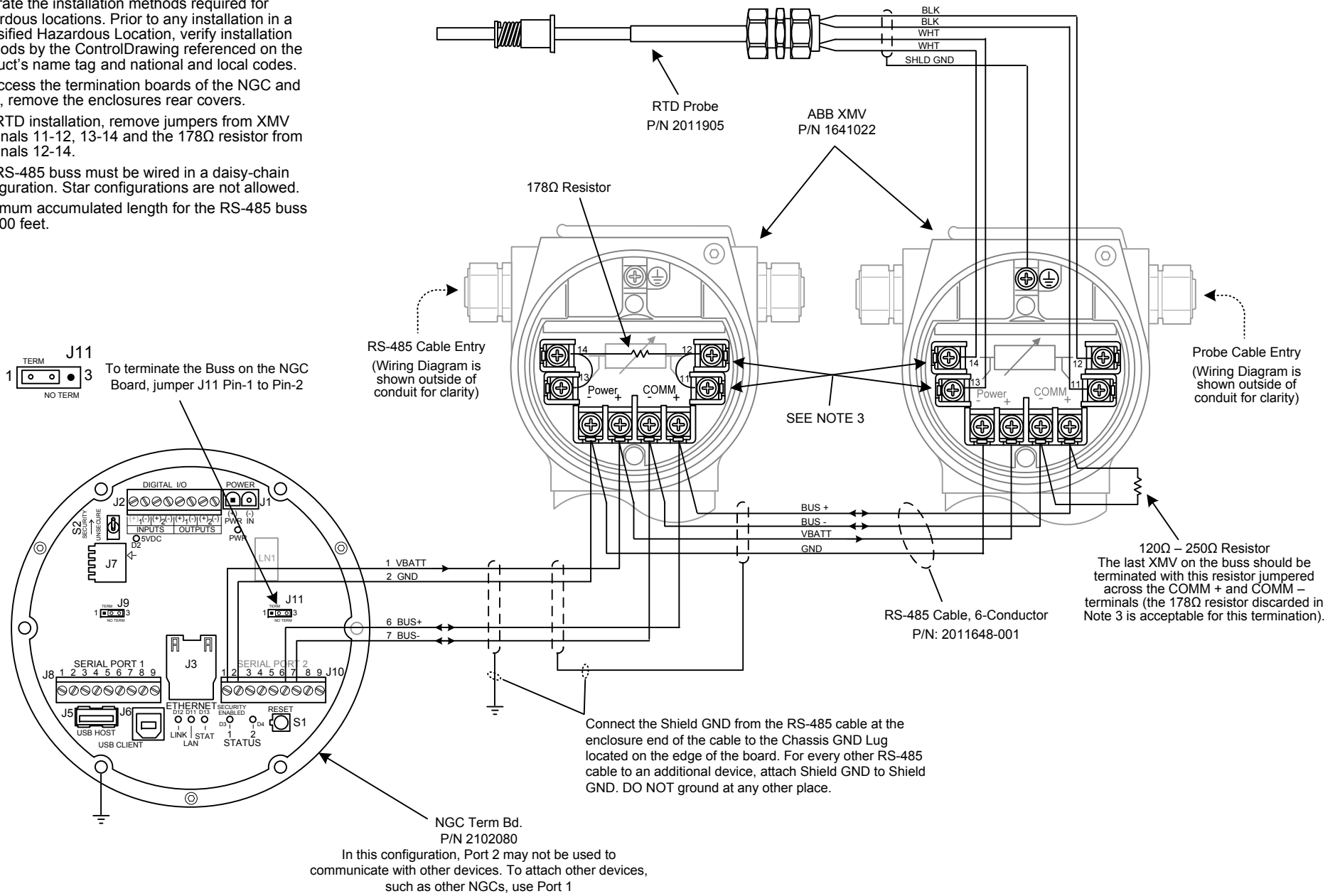


NOTES:

1. **WARNING:** This drawing does not completely illustrate the installation methods required for hazardous locations. Prior to any installation in a Classified Hazardous Location, verify installation methods by the ControlDrawing referenced on the product's name tag and national and local codes.
2. To access the termination boards of the NGC and XMV, remove the enclosures rear covers.
3. For RTD installation, remove jumpers from XMV terminals 11-12, 13-14 and the 178Ω resistor from terminals 12-14.
4. The RS-485 buss must be wired in a daisy-chain configuration. Star configurations are not allowed.
5. Maximum accumulated length for the RS-485 buss is 4000 feet.



REF: N/A

	TOTALFLOW	ACTION	DOC TYPE	TITLE	DWG NO.	REV	SHEET
	Products	D23861	UD	NGC8200 PORT 2 (RS-485) TO XMV MODBUS W/RTD	2102350	AC	1 OF 1