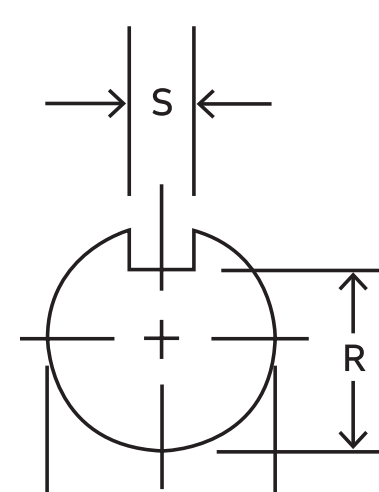
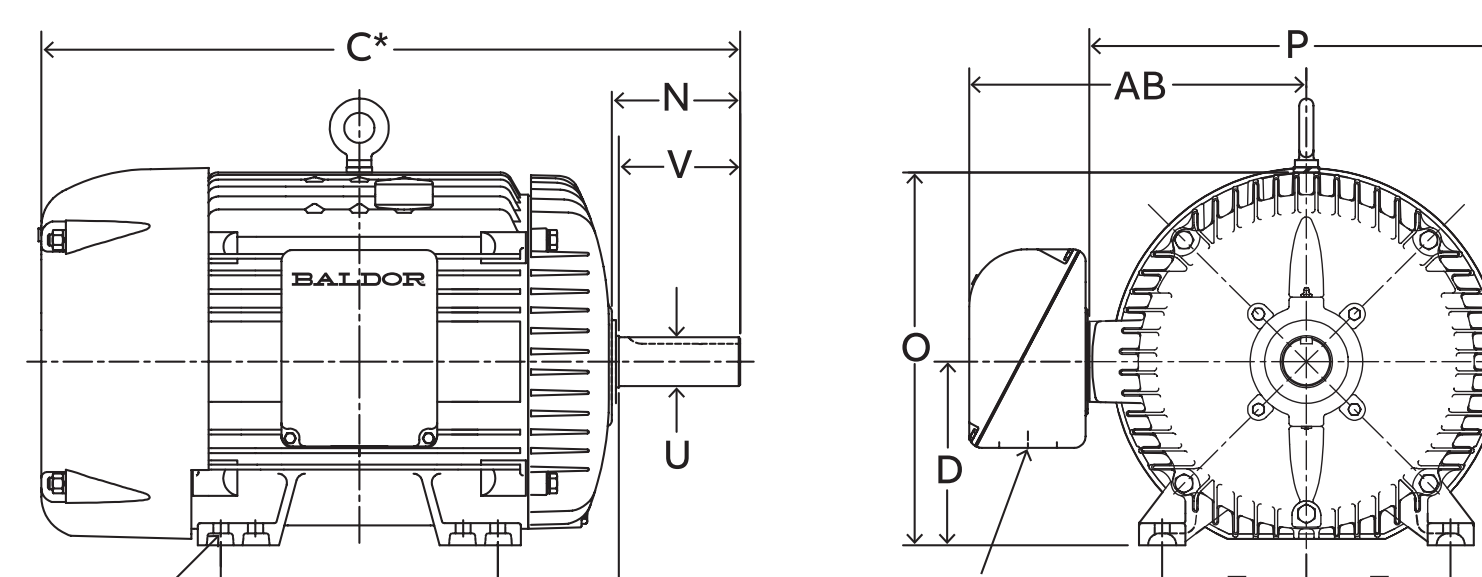
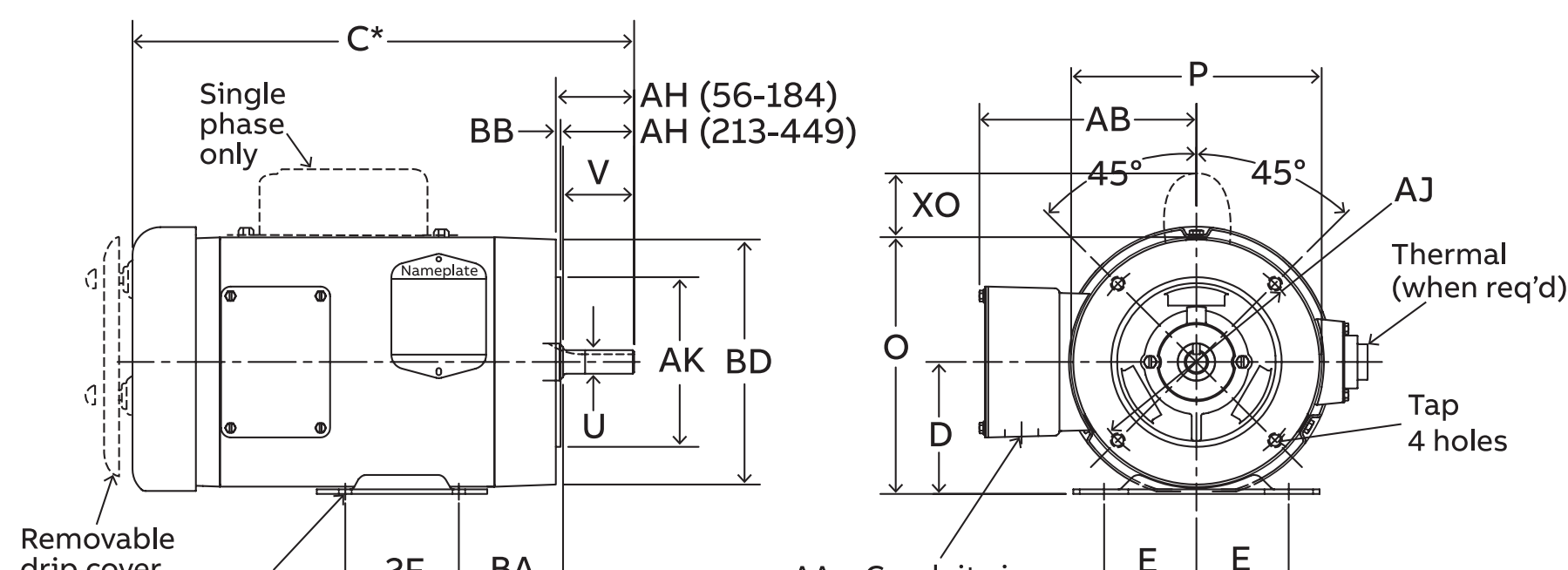


NEMA quick reference chart



NEMA Shaft	Keyseat Dimensions			NEMA Shaft	Keyseat Dimensions	
	(U)	(R)	(S)		(U)	(R)
3/8	21/64	FLAT		1-7/8	1-19/32	1/2
1/2	29/64	FLAT		2-1/8	1-27/32	1/2
5/8	33/64	3/16		2-3/8	2-1/64	5/8
7/8	49/64	3/16		2-1/2	2-3/16	5/8
1-1/8	63/64	1/4		2-7/8	2-29/64	3/4
1-3/8	1-13/64	5/16		3-3/8	2-7/8	7/8
1-5/8	1-13/32	3/8		3-7/8	3-5/16	1



Drawings represent standard TEFC general purpose motors.
*Dimensions are for reference only.

*Contact your local sales office for "C" Dimensions.
Dimensions - N, O, P, AB and XO are specific to Baldor-Reliance®.

NEMA Frame	D	E	2F	H	N	O	P	U	V	AA	AB	AH	AJ	AK	BA	BB	BD	XO	TAP
42	2-5/8	1-3/4	1-11/16	9/32 Slot	1-1/2	5	4-11/16	3/8	1-1/8	3/8	4-1/32	1-5/16	3-3/4	3	2-1/16	1/8	4-5/8	1-9/16	1/4-20
48	3	2-1/8	2-3/4	11/32 Slot	1-7/8	5-7/8	5-11/16	1/2	1-1/2	1/2	4-3/8	1-11/16	3-3/4	3	2-1/2	1/8	5-5/8	2-1/4	1/4-20
56	3-1/2	2-7/16	3	11/32 Slot	2-7/16	6-7/8	6-5/8	5/8	1-7/8	1/2	5	2-1/16	5-7/8	4-1/2	2-3/4	1/8	6-1/2	2-1/4	3/8-16
56H			5		2-1/8														
143T	3-1/2	2-3/4	4	11/32	2-1/2	6-7/8	6-5/8	7/8	2-1/4	3/4	5-1/4	2-1/8	5-7/8	4-1/2	2-1/4	1/8	6-1/2	2-1/4	3/8-16
145T			5																
182			4-1/2		2-11/16			7/8	2-1/4			2-1/8	5-7/8	4-1/2		1/8	6-1/2		3/8-16
184			5-1/2		2-11/16			7/8	2-1/4			2-1/8	5-7/8	4-1/2		1/8	6-1/2		3/8-16
182T	4-1/2	3-3/4	4-1/2	13/32	3-9/16	8-11/16	7-7/8	1-1/8	2-3/4	3/4	5-7/8	2-5/8	7-1/4	8-1/2	2-3/4	1/8	6-1/2	2-3/8	3/8-16
184T			5-1/2		3-9/16			1-1/8	2-3/4			2-5/8	7-1/4	8-1/2		1/4	9		1/2-13
213			5-1/2		3-1/2			1-1/8	3			2-3/4							1/2-13
215			7		3-1/2			1-1/8	3			2-3/4							
213T	5-1/4	4-1/4	5-1/2	13/32	3-7/8	10-1/4	9-9/16	1-3/8	3-3/8	1	7-3/8	3-1/8	7-1/4	8-1/2	3-1/2	1/4	9	2-3/4	1/2-13
215T			7		3-7/8			1-3/8	3-3/8			3-1/8							
254U			8-1/4		4-1/16			1-3/8	3-3/4			3-1/2							
256U	6-1/4	5	10	17/32	4-1/16	12-7/8	12-15/16	1-5/8	3-3/4	1	9-5/8	3-1/2	7-1/4	8-1/2	4-1/4	1/4	10	—	1/2-13
254T			8-1/4		4-5/16			1-5/8	4			3-3/4							
256T			10		4-5/16			1-5/8	4			3-3/4							
284U			9-1/2		5-1/8			1-5/8	4-7/8			4-5/8							
286U			11		5-1/8			1-5/8	4-7/8			4-5/8							
284T			9-1/2		4-7/8			1-7/8	4-5/8			4-3/8							
286T	7	5-1/2	11	17/32	4-7/8	14-5/8	14-5/8	1-7/8	4-5/8	1-1/2	13-1/8	4-3/8	9	10-1/2	4-3/4	1/4	11-1/4	—	1/2-13
284TS			9-1/2		3-3/8			1-5/8	3-1/4			3							
286TS			11		3-3/8			1-5/8	3-1/4			3							
324U			10-1/2		5-7/8			1-7/8	5-5/8			5-3/8							
326U			12		5-7/8			1-7/8	5-5/8			5-3/8							
324T	8	6-1/4	10-1/2	21/32	5-1/2	16-1/2	16-1/2	2-1/8	5-1/4	2	14-1/8	5	11	12-1/2	5-1/4	1/4	13-3/8	—	5/8-11
326T			12		5-1/2			2-1/8	5-1/4			5							
324TS			10-1/2		3-15/16			1-7/8	3-3/4			3-1/2							
326TS			12		3-15/16			1-7/8	3-3/4			3-1/2							
364U			11-1/4		6-3/4			2-1/8	6-3/8			18							
365U			12-1/4		6-3/4			2-1/8	6-3/8			18							
364T			11-1/4		6-1/4			2-3/8	5-7/8			18-1/16	5-5/8						
365T	9	7	12-1/4	21/32	6-1/4	18-1/2	19-1/2	2-3/8	5-7/8	3	18-1/16	5-5/8	11	12-1/2	5-7/8	1/4	13-3/8	—	5/8-11
364TS			11-1/4		4			1-7/8	3-3/4			18-1/16	3-1/2						
365TS			12-1/4		4			1-7/8	3-3/4			18-1/16	3-1/2						
404U			12-1/4		7-3/16			2-3/8	7-1/8			19-1/4	6-7/8						
405U			13-3/4		7-3/16			2-3/8	7-1/8			19-1/4	6-7/8						
404T			12-1/4		7-5/16			2-7/8	7-1/4			19-5/16	7						
405T	10	8	13-3/4	13/16	7-5/16	21-5/16	22-1/2	2-7/8	7-1/4	3	19-5/16	7	11	12-1/2	6-5/8	1/4	13-7/8	—	5/8-11
404TS			12-1/4		4-1/2			2-1/8	4-1/4			19-5/16	4						
405TS			13-3/4		4-1/2			2-1/8	4-1/4			19-5/16	4						
444U			14-1/2		8-5/8	24.24	27.57	2-7/8	8-5/8	3	22.68	8-3/8							
445U			16-1/2		8-5/8	24.24	27.57	2-7/8	8-5/8	3	22.68	8-3/8							
444T			14-1/2		8-9/16	24.24	27.57	3-3/8	8-3/8	4	22.68	8-1/4							
445T			16-1/2		8-9/16	24.24	27.57	3-3/8	8-3/8	4	22.68	8-1/4							
447T			20		8-9/16	24.24	27.57	3-3/8	8-3/8	4	23.86	8-1/4							
449T	11	9	25	13/16	8-9/16	24.24	27.57	3-3/8	8-1/2	4	23.86	8-1/4	14	16	7-1/2	1/4	16-3/4	—	5/8-11
444TS			14-1/2		4-13/16	24.24	27.57	2-3/8	4-5/8	4	22.68	4-1/2							
445TS			16-1/2		4-13/16	24.24	27.57	2-3/8	4-5/8	4	22.68	4-1/2							
447TS			20		4-13/16	24.24	27.57	2-3/8	4-5/8	4	23.86	4-1/2							
449TS			25		4-13/16	24.24	27.57	2-3/8	4-3/4	4	23.86	4-1/2							

U Frame TS Frame

The above chart provides typical legacy Baldor-Reliance motor dimensions. For more exact dimensional data, please check the specific drawing for each catalog number. NEMA states only a minimum value for AA dimension.

AA dimensions shown in chart are legacy Baldor-Reliance typical values meeting or exceeding NEMA. Please check motor drawing for actual dimensions.

Frame L449T is not included in this chart. Please refer to the Large AC motor chart, or to the specific motor drawings for L449T dimensions.

NEMA C-Face	BA Dimensions
143-5TC	2-3/4
182-4TC	3-1/2
213-5TC	4-1/4
254-6TC	4-3/4

Frame	NEMA frames prior to 1953							
	D	E	F	N	U	V	BA	
66	4-1/8	2-15/16	2-1/2	2-1/4	3/4	2-1/4	3-1/8	
203			2-3/4					
204	5	4	3-1/4	2-7/16	3/4	2	3-1/8	
224			3-3/8					
225	5-1/2	4-1/2	3-3/4	3-1/4	1	3	3-1/2	
254	6-1/4	5	4-1/8	3-7/16	1-1/8	3-3/8	4-1/4	
284	7	5-1/2	4-3/4	4-1/4	1-1/4	3-3/4	4-3/4	
324			5-1/4					
326	8	6-1/4	6	5-3/8	1-5/8	4-7/8	5-1/4	
364			5-5/8					
365	9	7	6-1/8	5-5/8	1-7/8	5-3/8	5-7/8	
404			6-1/8					
405	10	8	6-7/8	6-3/8	2-1/8	6-1/8	6-5/8	
444			7-1/4					
445	11	9	8-1/4	7-1/8	2-3/8	6-7/8	7-1/2	
504			8					
505	12-1/2	10	9	8-5/8	2-7/8	8-3/8	8-1/2	