

14

13

12

11

D

D

C

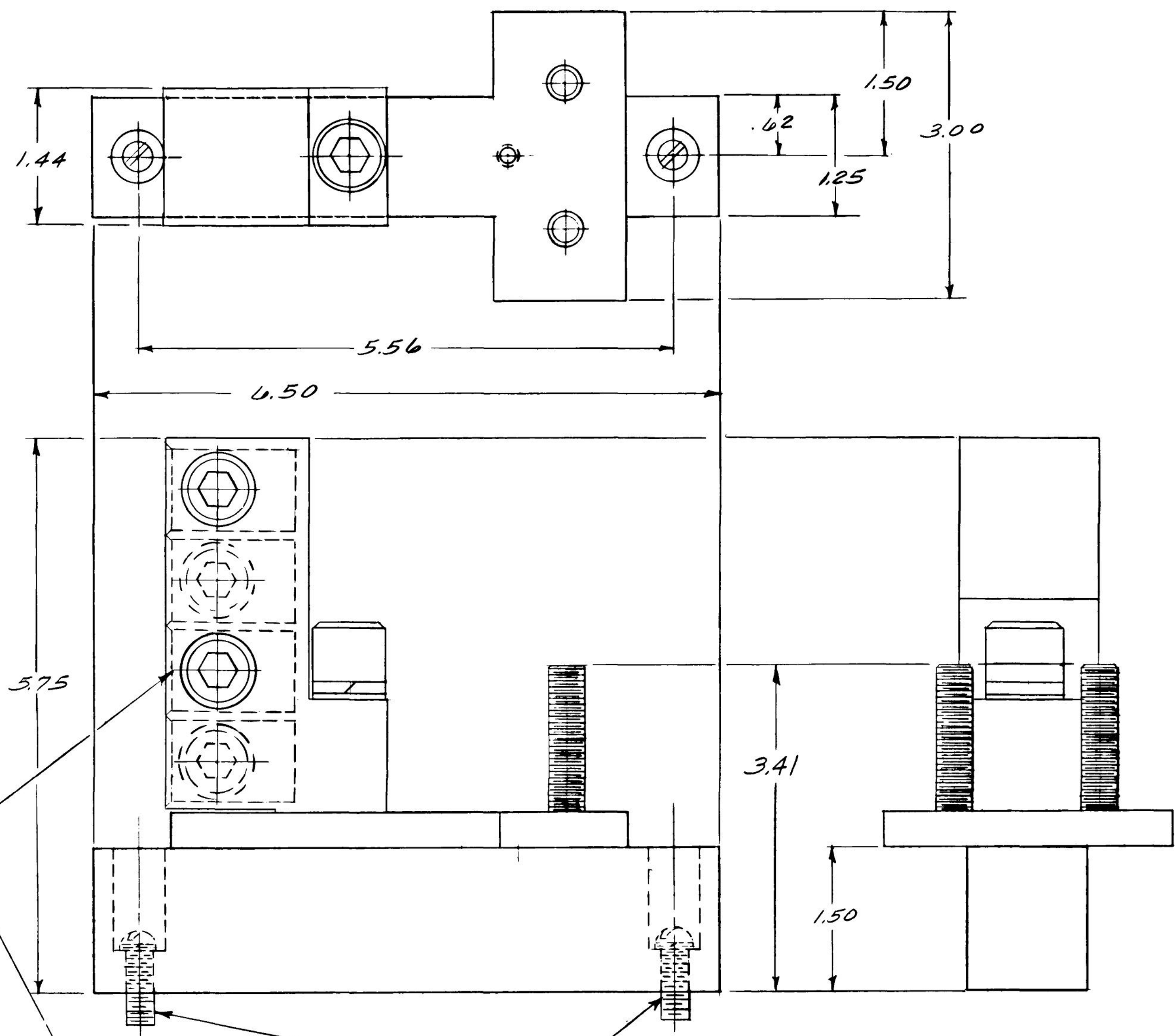
C

B

B

A

A



(4) .84 HOLES 1.34 DEEP  
 WIRE SIZE (4) 250-350 MCM CU  
 (4) 250-500 MCM AL

MOUNTING HARDWARE  
 (2) #12-24 X .75 LG SCREWS  
 (2) #12 LOCK WASHERS  
 (2) #12 FLAT WASHERS

<b>ABB</b>				
OUTLINE NEUTRAL FIRST MADE FOR TNIA1200G MOD 8				
THIRD ANGLE	SHEET#	DWG NO.	DATE	REV
	1 of 1	139C5489SH1	05-Feb-23	E

14

13

12

11