

HEAT REJECTION IN DOUBLE CONVERSION OPERATING MODE AT 1.0pF LOAD, NOMINAL VOLTAGE / FREQUENCY, ENERGY STORAGE DISCONNECTED.		100% LOAD	WEIGHT: lbs	FLOOR LOAD lbs/sq ft
1000 kW	BTU/hr	134783	5732	169
	kW	39.5		
HEAT REJECTION IN eBOOST OPERATING MODE @ 1.0 pF LOAD, NOMINAL VOLTAGE / FREQUENCY, ENERGY STORAGE DISCONNECTED.		100% LOAD	WEIGHT: lbs (kg)	FLOOR LOAD lbs/sq ft (kg/sq m)
1000 kW	BTU/hr	37951	5732	169
	kW	11.1		
TLE Power Section			3638	169
TLE In/Out Section			2094	

1. Dimensions are in inch;
2. UPS Operating Temperature 32° F–104°F
3. 18” minimum clearance required above the unit for heat rejection
4. Front access for service and maintenance
5. Do not tilt the UPS more than 10°

			Draw	Barbarani R.	08.03.21
			Checked	Balbiano C.	08.03.21
ECN		Name	Revision	1	3.12.14



Power Protection  
6572–Quartino, Switzerland

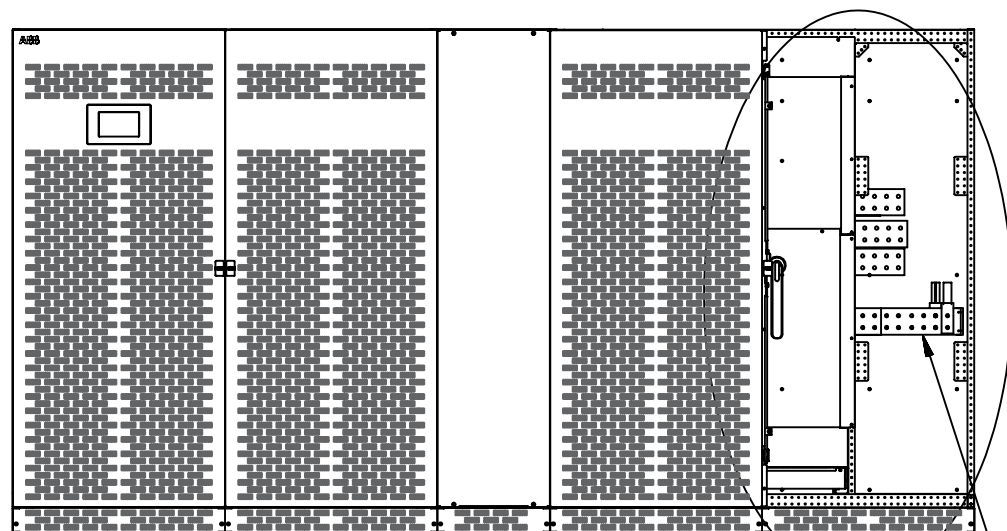
Mechanical Outline

TLE 1000 kW UL

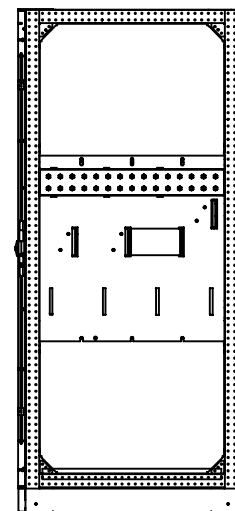
Product Upgrade Letter: A

Series: 2 0001050351

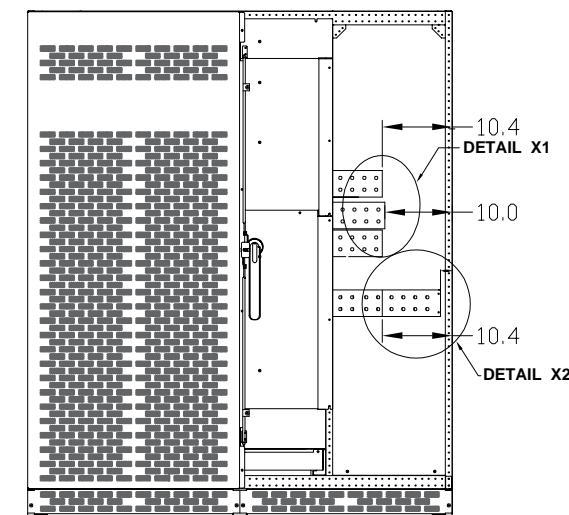
FRONT VIEW WITH  
SAFETY PANEL REMOVED



SIDE VIEW WITH  
SAFETY PANEL REMOVED



DETAIL A

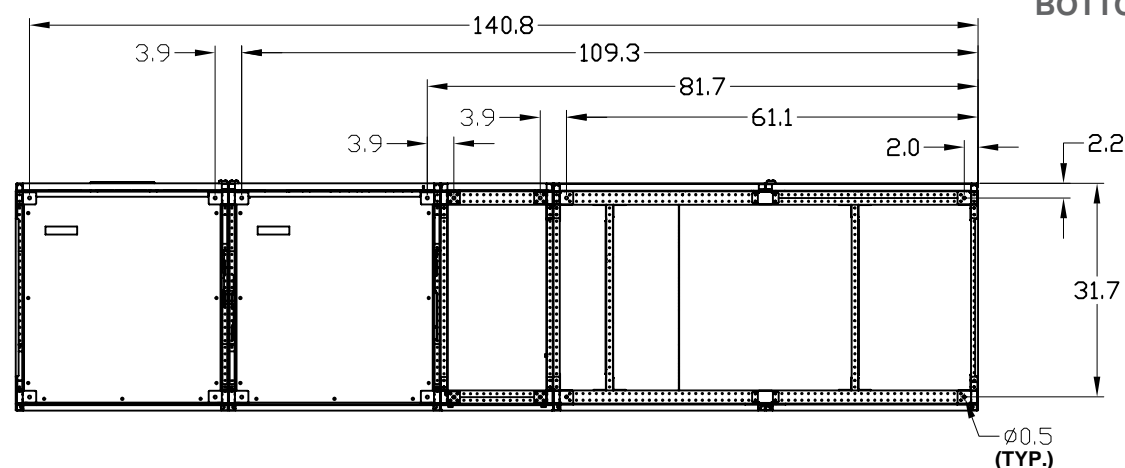


FRONT VIEW  
WITH FRONT PANEL REMOVED

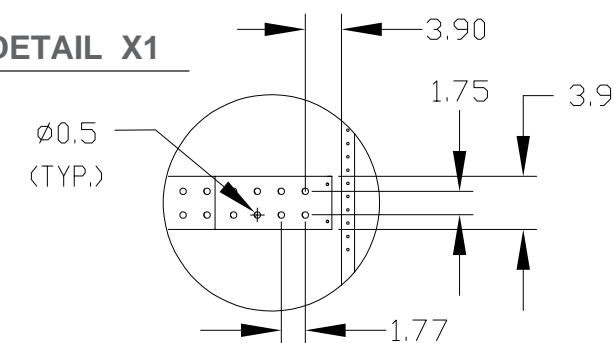
DETAIL A

BUS BAR EXTENSIONS  
ARE MOUNTED ON BOTTOM BARS  
IN CASE OF TOP CABLE ENTRY &  
ON TOP BARS IN CASE OF  
BOTTOM CABLE ENTRY

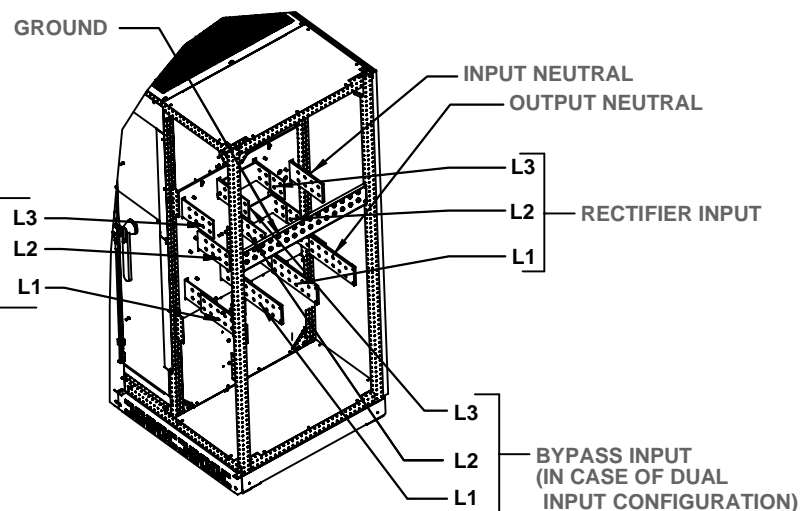
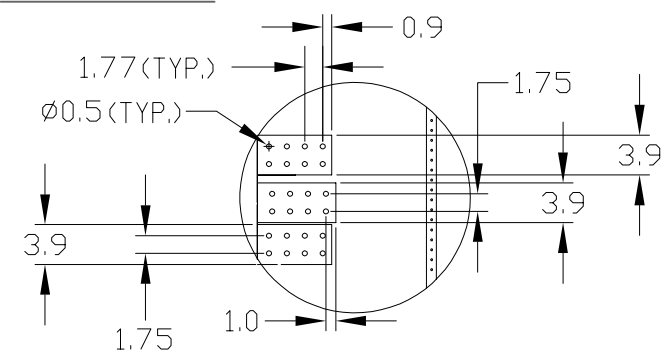
BOTTOM VIEW  
ANCHOR DETAIL



DETAIL X1



DETAIL X2



Maximum Allowed Cable Configuration

kW	Rectifier Input	Bypass Input	DC Input	Output (Load)	GND
1000	6 x 750 Kcmil	6 x 750 Kcmil	8 x 750 Kcmil	6 x 750 Kcmil	1 x 350 Kcmil

\* Actual cable size and quantity must be based on the  
requirements of NFPA 70 and must not exceed the limits  
listed above.



Power Protection  
6572-Quartino, Switzerland

Mechanical Outline

TLE 1000 kW UL

Product Upgrade Letter: A

Series: 2

0001050351

Page 2  
of 2