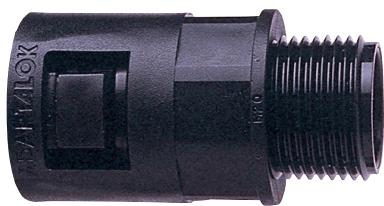


Adaptalok Type A

Straight fitting



A simple and easy to install, single piece, PA nylon (PA66), IP66 conduit fitting.

Certifications / Standards:



Features & benefits:

- For use with PA, CP, PR & PF conduits
- Single piece
- Multiple thread types
- Tamper proof
- Self-extinguishing, low smoke and halogen Free
- Very high UV resistance
- Available in black or grey

Applications:

- Construction - Commercial - Institutional
- OEM Assembly – Automation, Machinery, Panel builders
- Harness makers
- OEM Vehicles – Rail, Automotive, Marine
- Utility – Power & Energy, ICT & Data centre, Water & Waste
- Industry processing – pulp, paper, wood, food
- Infrastructure & Transport

Temperature range:

- Static applications: -50°C to +120°C
- Moving applications: -45°C to +120°C

UV Resistance:

- Very high

Material / Materials / Finishes:

- Polyamide (Nylon) PA 66
- Available in black or grey

Ingress protection:

- IP66 - as standard
- IP67 - when fitted with ALS seal
- IP68 - when fitted with ALS seal (1.1 Bar for 35 minutes)
- IP69K - When fitted with ALS seal

Conforms to:

- CE marked to Low Voltage Directive 2014/35/EU
- RoHS Compliant to 2011/65/EU
- Conforms with end of life vehicle directive (ELV) EU200/53/EC
- BS Kitemark KM-35161
- EN45545-2 HL2 (R22) & HL3 (R23)
- UL1696 / CSA 22.2 No:227.3 - File number E173968

Fire performance:

Test standard	Performance rating
EN45545	HL2 (R22) & HL3 (R23)
BS EN 61386-1 & -23	Approved
NFF16-101	I4 F2
BS EN 60695-2-11	850
ISO4589-2	32.3%
UL94	V2

Chemical resistance:

- View our chemical resistance guide [here](#).

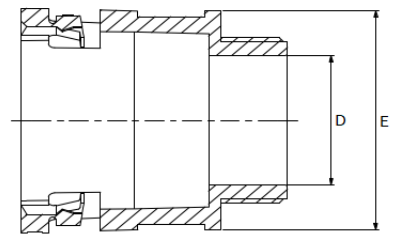
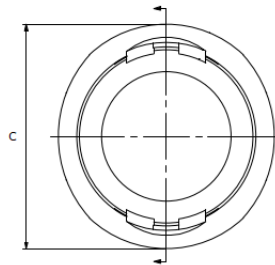
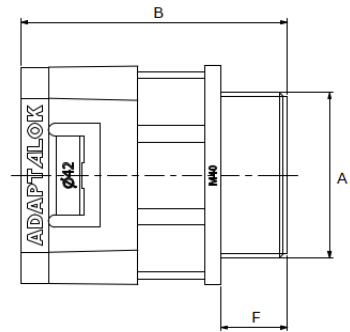
Adaptalok Type A (Metric)– Part numbers and dimensions

Part No. Black	Part No. Grey	Nominal Conduit Size (mm)	Thread A	Dimensions (mm)					
				B	C	D	E	F	
AL10/M12/A/BL	AL10/M12/A/GR	10	M12x1.5	35.1	16.1	8.00	15.2	10.0	
AL13/M16/A/BL	AL13/M16/A/GR	13	M16x1.5	42.9	21.3	11.70	19.0	11.5	
AL13/M20/A/BL	AL13/M20/A/GR	13	M20x1.5	41.4	21.3	12.80	23.4	10.0	
AL16/M16/A/BL	AL16/M16/A/GR	16	M16x1.5	44.6	23.7	11.65	20.9	11.5	
AL16/M20/A/BL	AL16/M20/A/GR	16	M20x1.5	44.6	23.7	15.30	23.4	11.5	
AL20/M20/A/BL	AL20/M20/A/GR	20	M20x1.5	48.8	28.1	15.20	25.1	14.0	
AL21/M20/A/BL	AL21/M20/A/GR	21	M20x1.5	48.7	29.0	15.20	26.7	14.0	
AL21/M25/A/BL	AL21/M25/A/GR	21	M25x1.5	45.8	29.0	17.80	31.5	11.0	
AL25/M25/A/BL	AL25/M25/A/GR	25	M25x1.5	51.9	33.3	20.00	30.8	16.0	
AL28/M25/A/BL	AL28/M25/A/GR	28	M25x1.5	53.0	36.8	20.10	35.5	16.25	
AL28/M32/A/BL	AL28/M32/A/GR	28	M32x1.5	48.8	36.8	22.40	37.7	12.2	
AL34/M32/A/BL	AL34/M32/A/GR	34	M32x1.5	53.7	43.2	26.70	41.7	16.0	
AL34/M40/A/BL	AL34/M40/A/GR	34	M40x1.5	50.0	43.0	30.30	45.3	12.1	
AL42/M40/A/BL	AL42/M40/A/GR	42	M40x1.5	63.8	54.0	31.20	52.7	16.0	
AL42/M50/A/BL	AL42/M50/A/GR	42	M50x1.5	63.9	54.0	37.65	66.4	12.1	
AL54/M50/A/BL	AL54/M50/A/GR	54	M50x1.5	68.6	66.5	40.60	67.2	16.1	
AL54/M63/A/BL	AL54/M63/A/GR	54	M63x1.5	68.9	66.5	56.0	69.7	16.0	

Metric Standard thread conforming to EN60423 & BS3643

Thread Size	External Thread Outside Diameter	Internal Thread Inside Diameter	Pitch
M12	12	10.9	1.5
M26	16	14.4	1.5
M20	20	18.4	1.5
M25	25	23.4	1.5
M32	32	30.4	1.5
M40	40	38.4	1.5
M50	50	48.4	1.5
M63	63	61.4	1.5

Note: Dimensions are nominal



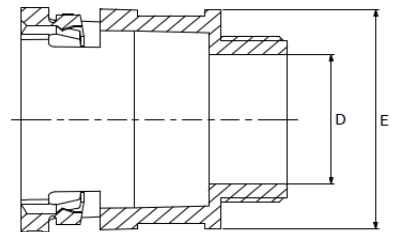
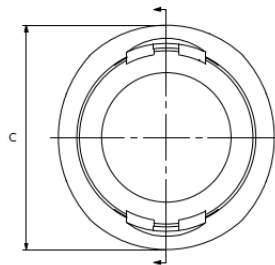
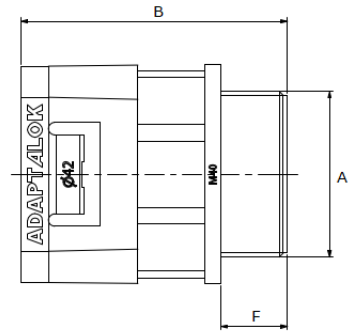
Adaptalok Type A (PG) – Part numbers and dimensions

60.1 Part No. Black	Part No. Grey	Nominal Conduit Size (mm)	Thread A	Dimensions (mm)					
				B	C	D	E	F	
AL10/PG7/A/BL	AL10/PG7/A/GR	10	PG7	33.2	16.1	8.00	15.2	8.00	
AL10/PG9/A/BL	AL10/PG9/A/GR	10	PG9	35.3	16.2	11.40	18.1	10.20	
AL13/PG9/A/BL	AL13/PG9/A/GR	13	PG9	41.5	21.3	11.40	18.4	10.00	
AL13/PG11/A/BL	AL13/PG11/A/GR	13	PG11	41.4	21.3	13.65	21.7	10.00	
AL13/PG13/A/BL	AL13/PG13/A/GR	13	PG13.5	41.4	21.3	15.65	23.6	10.20	
AL16/PG9/A/BL	AL16/PG9/A/GR	16	PG9	43.1	23.7	11.40	21.8	10.00	
AL16/PG11/A/BL	AL16/PG11/A/GR	16	PG11	43.1	23.7	13.65	21.7	10.00	
AL16/PG13/A/BL	AL16/PG13/A/GR	16	PG13.5	43.1	23.7	15.65	23.6	10.00	
AL16/PG16/A/BL	AL16/PG16/A/GR	16	PG16	44.6	23.7	18.0	26.9	11.5	
AL18/PG13/A/BL	AL18/PG13/A/GR	18	PG13.5	44.1	26.3	14.10	24.5	10.00	
AL21/PG11/A/BL	AL21/PG11/A/GR	21	PG11	44.8	29.0	13.70	26.8	10.00	
AL21/PG13/A/BL	AL21/PG13/A/GR	21	PG13	44.8	29.0	15.70	26.8	10.00	
AL21/PG16/A/BL	AL21/PG16/A/GR	21	PG16	46.0	29.0	17.80	26.7	11.25	
AL28/PG21/A/BL	AL28/PG21/A/GR	28	PG21	49.1	36.8	22.30	35.5	12.20	
AL34/PG29/A/BL	AL34/PG29/A/GR	34	PG29	50.0	43.2	30.30	41.5	12.20	
AL42/PG36/A/BL	AL42/PG36/A/GR	42	PG36	60.1	54.0	38.20	52.4	12.10	
AL54/PG48/A/BL	AL54/PG48/A/GR	54	PG48	65.1	67.1	51.60	67.2	12.10	

PG Standard thread conforming to DIN40430

Thread Size	External Thread Outside Diameter	Internal Thread Inside Diameter	Pitch
PG7	12.5	11.3	1.27
PG9	15.2	13.9	1.41
PG11	18.6	17.3	1.41
PG13.5	20.4	19.1	1.41
PG16	22.5	21.2	1.41
PG21	28.3	26.8	1.59
PG29	37.0	35.5	1.59
PG36	47.0	45.5	1.59
PG48	59.3	57.8	1.59

Note: Dimensions are nominal



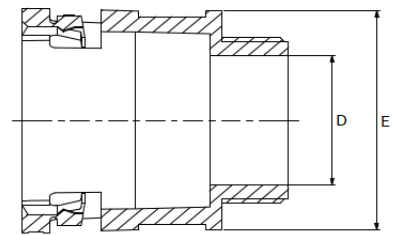
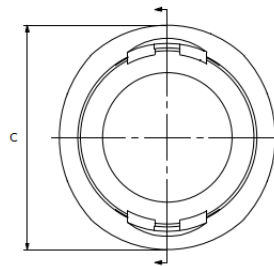
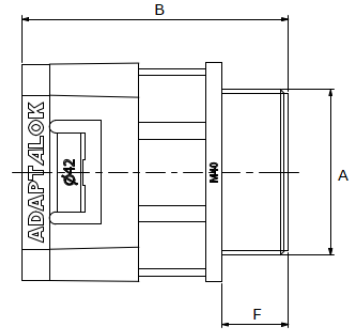
Adaptalok Type A (PF) – Part numbers and dimensions

Part No. Black	Part No. Grey	Nominal Conduit Size (mm)	Thread A	Dimensions (mm)					
				B	C	D	E	F	
AL10/PF025/A/BL	AL10/PF025/A/GR	10	PF $\frac{1}{4}$	36.75	16.1	9.00	17.7	11.5	
AL13/PF038/A/BL	AL13/PF038/A/GR	13	PF $\frac{3}{8}$	42.80	21.3	11.65	21.7	11.5	
AL16/PF038/A/BL	AL16/PF038/A/GR	16	PF $\frac{3}{8}$	44.60	23.7	11.65	21.7	11.5	
AL16/PF050/A/BL	AL16/PF050/A/GR	16	PF $\frac{1}{2}$	44.60	23.7	15.20	25.8	11.5	
AL21/PF050/A/BL	AL21/PF050/A/GR	21	PF $\frac{1}{2}$	48.80	29.0	15.20	26.7	14.0	
AL28/PF075/A/BL	AL28/PF075/A/GR	28	PF $\frac{3}{4}$	53.00	36.8	20.10	34.3	16.25	
AL34/PF100/A/BL	AL34/PF100/A/GR	34	PF1	53.80	43.0	26.70	41.5	16.0	
AL42/PF125/A/BL	AL42/PF125/A/GR	42	PF1 $\frac{1}{4}$	63.60	53.5	30.90	52.7	16.0	
AL54/PF150/A/BL	AL54/PF150/A/GR	54	PF1 $\frac{1}{2}$	68.9	66.9	40.70	67.6	16.1	
AL54/PF200/A/BL	AL54/PF200/A/GR	54	PF2	68.9	66.7	49.60	68.9	16.1	

PF Japanese Standard thread conforming to JIS B 0202

Thread Size	External Thread Outside Diameter	Internal Thread Inside Diameter	Pitch
3/8"	16.7	15.0	1.34
1/2"	21.0	18.6	1.81
3/4"	26.4	24.1	1.81
1"	33.3	30.3	2.31
1 1/4"	41.9	39.0	2.31
1 1/2"	47.8	44.8	2.31
2"	59.6	56.7	2.31

Note: Dimensions are nominal



Adaptalok Type A (NPT) – Part numbers and dimensions

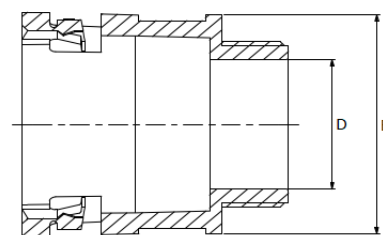
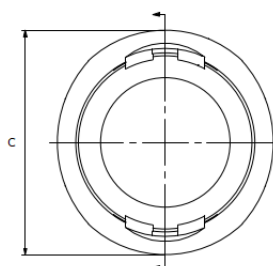
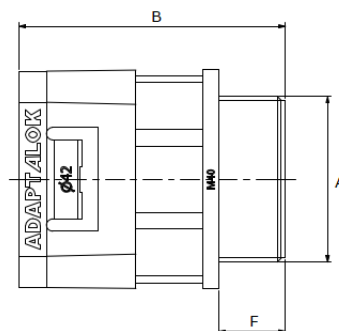
Part No. Black	Part No. Grey	Nominal Conduit Size (mm)	Thread A	Dimensions (mm)					
				B	C	D	E	F	
AL13/038/A/BL	AL13/038/A/GR	13	NPT 3/8	42.9	21.3	11.65	18.8	11.50	
AL16/050/A/BL	AL16/050/A/GR	16	NPT 1/2	44.7	23.7	15.30	26.6	11.50	
AL21/050/A/BL	AL21/050/A/GR	21	NPT 1/2	48.7	29.0	15.20	26.7	14.00	
AL28/075/A/BL	AL28/075/A/GR	28	NPT 3/4	53.2	36.8	20.10	34.4	16.25	
AL34/100/A/BL	AL34/100/A/GR	34	NPT 1	53.8	43.2	26.80	41.6	16.00	
AL42/125/A/BL	AL42/125/A/GR	42	NPT 1 1/4	63.6	53.8	30.80	52.7	16.00	
AL54/150/A/BL	AL54/150/A/GR	54	NPT 1 1/2	68.9	66.8	41.00	66.7	16.10	

**US taper seal pipe thread
conforming to ANSI/
ASME B1.20.1-1983**

NPT

Thread Size	External Thread Outside Diameter	Pitch
3/8"	16.7	1.14
1/2"	21.0	1.81
3/4"	26.4	1.81
1"	33.3	2.21
1 1/4"	41.9	2.21
1 1/2"	47.8	2.21
2"	59.6	2.21

Note: Dimensions are nominal



Mechanical properties

Test type	Standard	Requirement	Status
Tensile strength	IEC61386-1	2 mins at Specified Value	Class 1
Tensile strength		Ultimate Pullout	240N
Impact strength @ -45°C	IEC61386-1	No cracks <20% deformation min value	Class 1
Impact strength @ -5°C	IEC61386-1	No cracks <20% deformation min value	Class 3
Impact strength @ 23°C	IEC61386-1	No cracks <20% deformation min value	Class 5

Thermal properties

Test type	Standard	Requirement	Value
Minimum temperature		Permanent static use	-40°C
Minimum temperature		Dynamic Use (5000 cycles)	-45°C
Maximum temperature	IEC61386-23	Permanent static use	105°C
Maximum temperature		Dynamic Use (5000 cycles)	120°C

Flammability

Test type	Standard	Requirement	Result	Value
Oxygen index	ISO 4589-2	% Oxygen to support combustion	32.3	%
Glow wire	BS EN 60695-2-11	No ignition to extinguish within 30s	850	°C
Flammability	BS EN 61386-1	1KW burner at 45°	Pass	

Smoke

Test type	Standard	Requirement	Result	Unit
Optical Density	ISO-5659-2	Ds Max	218	Ds Max

Toxicity

Test type	Standard	Requirement	Result	Value
Halogen free	NFX 70-100	<0.5%	Pass	Pass/Fail
Gas Analys	NFX 70-100	CIT NLP <1	0.73	

Pre-test conditions

Duration	Standard	Temperature	Relative humidity
168 (hrs)	BS EN 61386-1	23°C	50%

ABB UK Ltd
CMG House, Station Road,
Coleshill, Birmingham
B46 1 HT
Tel: +44 (0) 1675 468 200

For Sales Support contact:
gb-cmg.salessupport@abb.com
For Technical Support contact:
cmg.conduitsystems@abb.com
For Samples Support contact:
gb-sample-requests@abb.com

We reserve the right to make technical changes or modify the contents of this document without prior notice. With regard to purchase orders, the agreed particulars shall prevail. ABB Cable Management Products Ltd. does not accept any responsibility whatsoever for potential errors or possible lack of information in this document.

We reserve all rights in this document and in the subject matter and illustrations contained therein. Any reproduction, disclosure to third parties or utilisation of its contents – in whole or in parts – is forbidden without prior written consent of ABB Cable Management Products Ltd. Copyright© 2023 ABB. All rights reserved