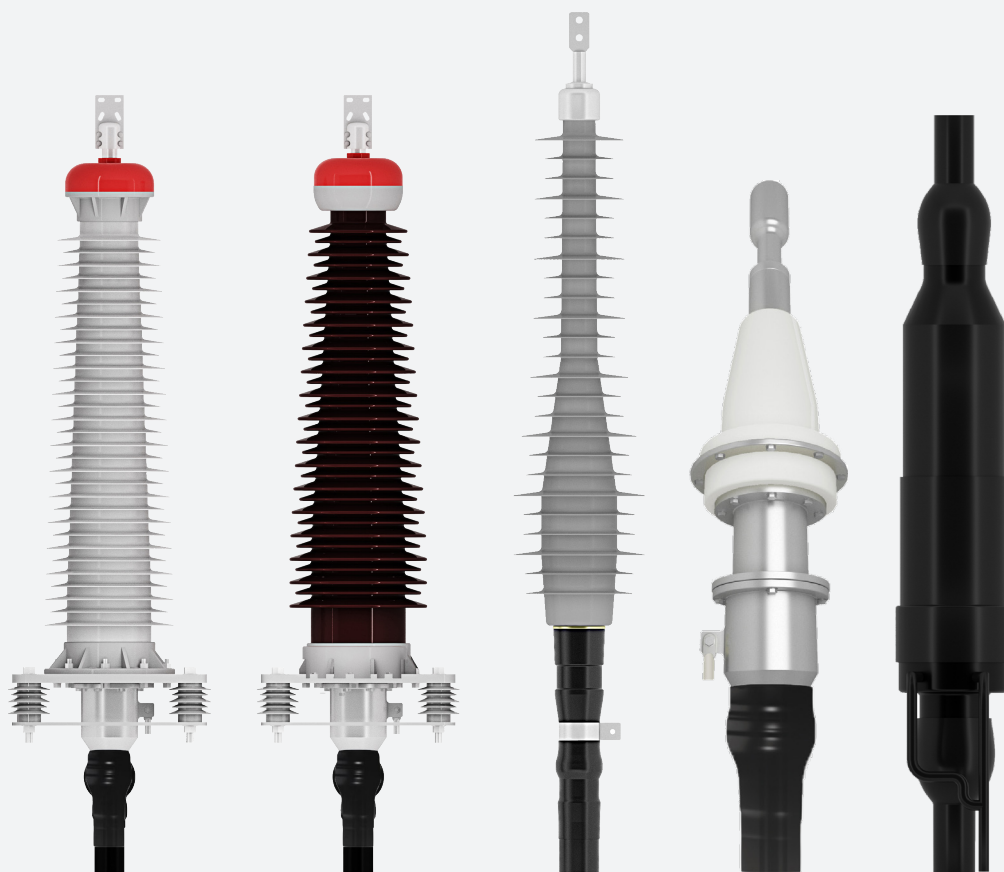


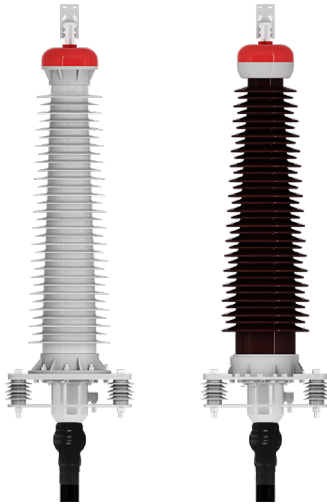
Product Data

ABB 110kV Cable Accessories



Oil-immersed termination with composite insulator

Oil-immersed termination with porcelain insulator



The terminal adopts a three-layer sealing structure on the top and a flexible sealing pipe structure on the bottom, which is fitted with a rubber stress cone pre-expanded in the factory, easy to install on site and suitable for indoor and outdoor use, up to the pollution class IV.

Main technical standards

GB/T 11017

IEC 60840

Product features

- Applicable voltage class 64/110 (126), 76/132 (145)kV, cross-sectional area 240 to 1600mm².
- The product is fitted with a bolt-type press terminal clamp and a mechanical crimp-type conductor terminal pole to ensure reliable electrical connection.
- It is fitted with a grading shield formed by high-quality aluminum alloy phase color baking varnish process to provide the better protection against rain and the uniform top corona performance.
- It is fitted with a porcelain insulating bushing made of high-strength inorganic materials (electric porcelain), with high weather resistance, anti-leakage, electrical erosion resistance and hydrophobic properties.
- The composite insulating bushing with excellent mechanical performance, explosion-proof performance and light weight is easy to handle and transport, highly safely and reliably, and highly resistant to pollution, UV and aging.
- The polyisobutylene with high molecular weight, high compressive strength and high cold resistance is selected as the insulation medium to improve the overall performance of the product and is applicable to various environments.

- The stress cone made of imported silicone rubber is selected, showing the better electrical performance, holding the cable insulation for a long time and providing high withstand voltage strength of the interface to prolong the service life of the product.
- The insulator formed by epoxy glass fiber rod and composite silicon rubber is lighter and higher in the resistance to shock and explosion.

Storage conditions

- The original and unopened package shall be stored in a dry and ventilated position with at the room temperature of 5 to 35°C;
- The period of validity for installing the stress cone is one year (from the date of manufacture);
- The shelf life of strips, seal rings and silicone grease is three years;
- The shelf life of insulating oil is two years;
- Metal parts could be stored for a long time under the condition of original sealed package and no oxidation, which shall not be used in case of rusting.

Applicable cable specifications

Insulation OD	50-85 mm
Cross section of conductor	240-1600 mm ²
Outer cable sheath	80-120 mm

Product weight and dimensions

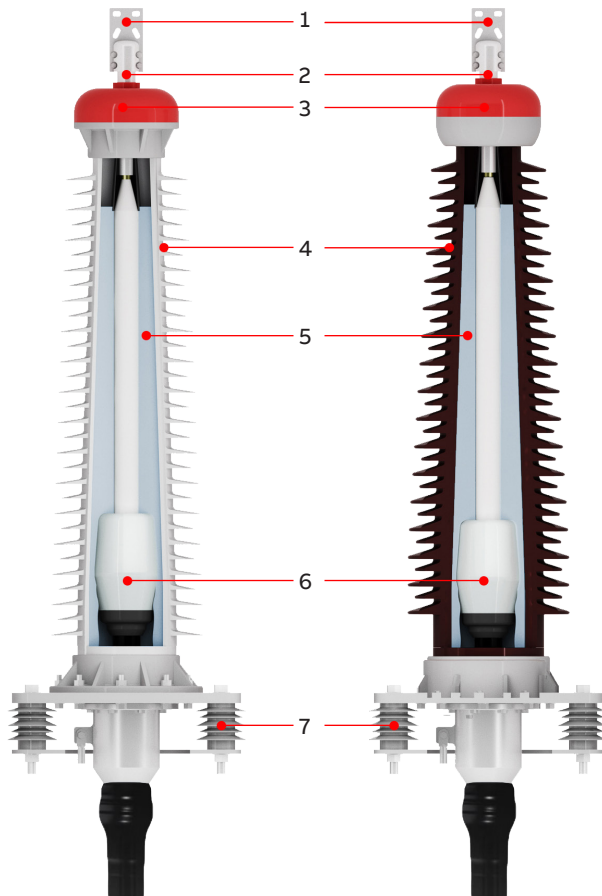
Weight	≈130 kg/pcs (G1TC126)
	≈230 kg/pcs (G1TP126)
Creepage distance	≥3906 mm
Height	1680 mm (G1TC126)
	1730 mm (G1TP126)
OD	Φ365 mm
Maximum inclination angle	15°

Shipping dimensions (package size, weight)

Model	Weight	Volume
G1TC126	≈160 kg	0.65 m ³
G1TP126	≈260 kg	0.65 m ³

Options

Model	Section [mm ²]	Hole Spacing [mm]	Hole Diameter [mm]
D-45	240-1200	45×45	4×14.5
D-60	1600	50×50	4×17.5

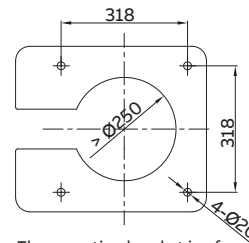
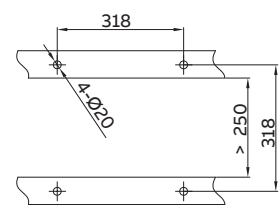
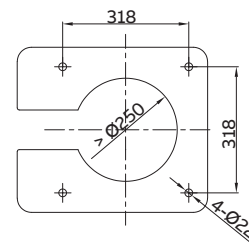
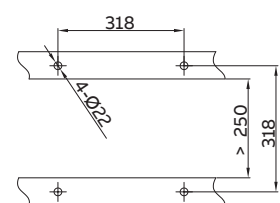


Oil-immersed termination with composite insulator

Oil-immersed termination with porcelain insulator

- 1.Terminal clamp
- 2.Conductor terminal pole
- 3.Grading shield
- 4.Insulating bushing

5. Insulating oil
6. Rubber stress cone
7. Support insulator

Dimensional Drawing of Mounting Base for Composite TerminalThe mounting bracket is of flat structure
(Hole spacing 318mm*318mm)The mounting bracket is of channel steel structure
(Hole spacing 318mm*318mm)**Dimensional Drawing of Mounting Base for Porcelain Bushing Terminal**The mounting bracket is of flat structure
(Hole spacing 318mm*318mm)The mounting bracket is of channel steel structure
(Hole spacing 318mm*318mm)

One piece pre-molded termination



It is an all-dry flexible outdoor terminal made by integral forming, in which a semi-conductive silicon rubber stress cone is provided. It is easy to install without using installation platform and scaffold, up to the pollution class IV.

Main technical standards

GB/T 11017
IEC 60840

Product features

- Applicable voltage class 64/110 (126), 76/132 (145)kV, applicable cross-sectional area 240 to 1600mm².
- The outlet terminal is mechanically crimped to ensure reliable connection with the copper conductor of the cable.
- It is fitted with a grading shield formed by high-quality aluminum alloy phase color baking varnish process to provide the better protection against rain and the uniform top corona performance.
- The whole product is made of imported silicone rubber and designed to adopt the large-small shed structure, which is convenient for self-cleaning and highly resistant to pollution, UV and aging. It is light and flexible in the structure and can be installed for use at a large angle.
- It is fitted with a copper collecting ring at the bottom to collect the surface leakage current and seal and fix the bottom of the terminal so as to enhance the safety performance.
- It adopts the lengthened tail pipe design to enhance the overall rigidity, facilitating reliable use at a larger angle.

Storage conditions

- The original and unopened package shall be stored in a dry and ventilated position with at the room temperature of 5 to 35°C;
- The period of validity for installing the stress cone is one year (from the date of manufacture);
- The shelf life of strips, seal rings and silicone grease is three years;
- Metal parts could be stored for a long time under the condition of original sealed package and no oxidation, which shall not be used in case of rusting.

Applicable cable specifications

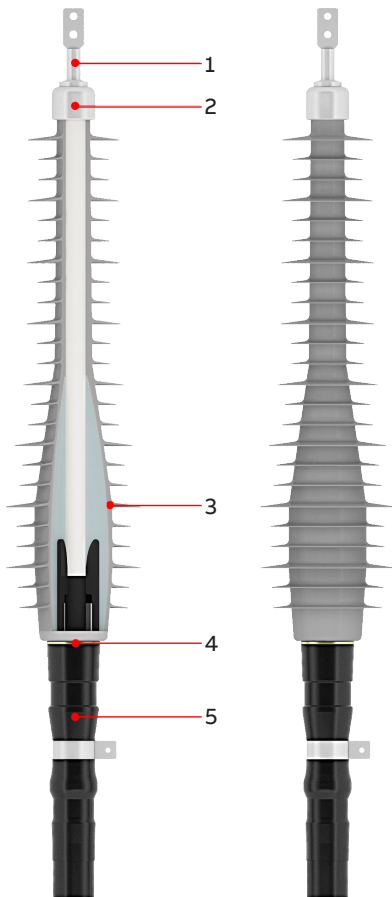
Insulation OD	50-85 mm
Cross section of conductor	240-1600 mm ²
Outer cable sheath	80-120 mm

Product weight and dimensions

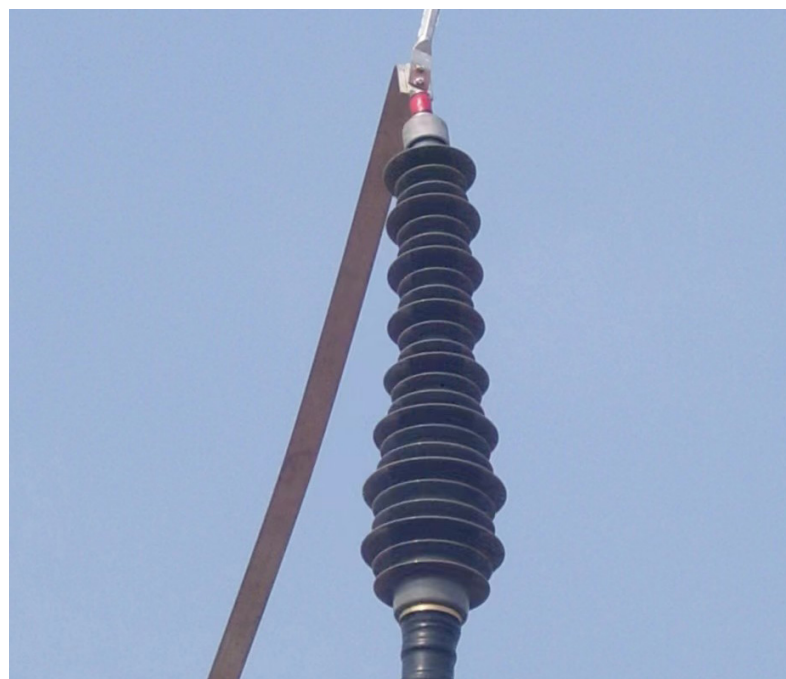
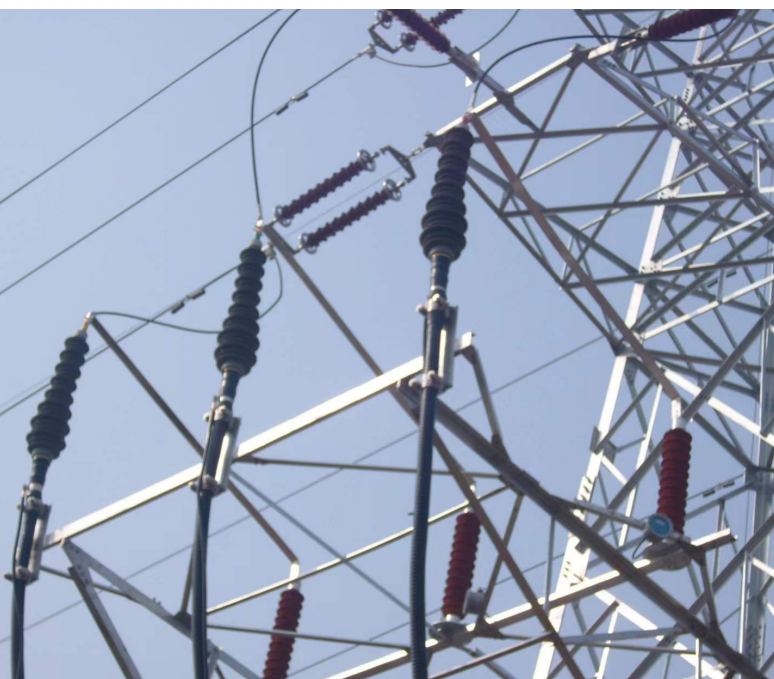
Weight	≈40 kg/pcs
Creepage distance	≥3906 mm
Height	1725 mm
OD	Φ320 mm

Shipping dimensions (package size, weight)

Model	Weight	Volume
G1TD126	≈65 kg	0.5 m ³



1. Conductor connection terminal
2. Shielding case
3. Terminal stress cone
4. Collecting ring
5. Tail pipe



Gas-immersed termination for GIS (long and short)



The product adopts a spring jacking structure to ensure more uniform and constant stress on the interface of the stress cone, cable and epoxy bushing; the entire terminal is a full-dry structure without adding any insulating casting agent. The long and short types share one epoxy bushing to improve the interchangeability, reliability and convenience of the product.

Main technical standards

GB/T 11017

IEC 60840、IEC 62271-209 及 IEC 60859

Product features

- Applicable voltage class 64/110 (126), 76/132 (145) kV, applicable cross-sectional area 240 to 1600mm².
- It is silver-plated and fitted with a bolted conductor extension rod to ensure reliable electrical connection and uniform corona performance.
- It is plated with silver on the surface of conductor connecting hardware and adopts the embedded spring contact finger structure to facilitate cable pass-through; the spring contact finger is made of imported copper materials with high conductivity and high mechanical performance, which is silver-plated on the surface to the thickness more than 20μm to ensure reliable electrical performance.
- It is fitted with a mechanical crimp-type conductor terminal pole to ensure reliable electrical connection.
- The stress cone made of imported silicone rubber is selected, showing the better electrical performance, holding the cable insulation for a long time and providing high withstand voltage strength of the interface to prolong the service life of the product.

- The product adopts the imported spring jacking structure to ensure more uniform and constant stress on the interface of the whole stress cone, cable insulation and epoxy bushing.

Storage conditions

- The original and unopened package shall be stored in a dry and ventilated position with at the room temperature of 5 to 35°C;
- The period of validity for installing the stress cone an epoxy bushing is 5 years (from the date of manufacture);
- The shelf life of strips, seal rings and silicone grease is three years;
- Metal parts could be stored for a long time under the condition of original sealed package and no oxidation, which shall not be used in case of rusting.

Applicable cable specifications

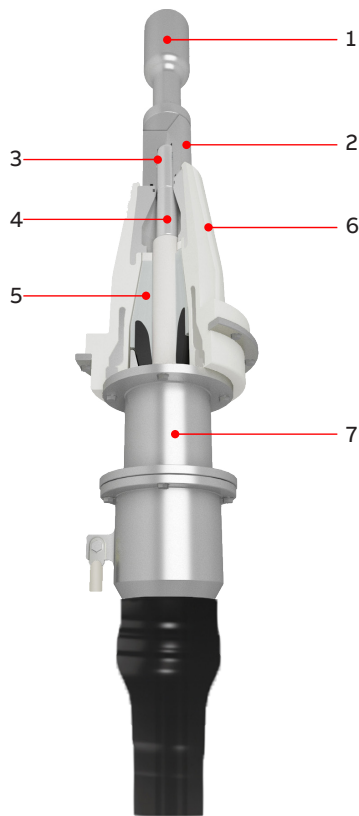
Insulation OD	50-85 mm
Cross section of conductor	240-1600 mm ²
Outer cable sheath	80-120 mm

Product weight and dimensions

Weight	≈75 kg/pcs (G1GL126)
	≈65 kg/pcs (G1GS126)
Length	1370 mm (G1GL126)
	1083 mm (G1GS126)
OD	Φ350 mm

Shipping dimensions (package size, weight)

Model	Weight	Volume
G1GL126	≈90 kg	0.3 m ³
G1GS126	≈80 kg	0.3 m ³



1. Conductor extension rod (for long type)
2. Conductor connection hardware (sealing flange)
3. Spring contact finger
4. Conductor terminal pole
5. Stress cone
6. Epoxy bushing
7. Spring jacking mechanism



One piece pre-molded sectionalizing joint

One piece pre-molded straight joint



The joint adopts a compact structure with a long internal creepage distance and large safety margin. The protective layer adopts the high-strength and corrosion-resistant protective shell and the waterproof insulating sealing structure and the environmental-friendly and flame-retardant sealant is injected into the protective shell to ensure the safe operation of the joint in severe environment for a long time.

Main technical standards

GB/T 11017
IEC 60840

Product features

- Applicable voltage class 64/110 (126), 76/132 (145) kV, applicable cross-sectional area 240 to 1600mm².
- The conductor connecting pipe is mechanically crimped to ensure reliable connection with the copper conductor of the cable.
- The integral prefabricated joint adopts imported silicon rubber and three-layer composite structure, and the outer shielding layer adopts rubber injection molding, so as to ensure the lower grounding resistance and the bonding reliability of the outer shielding layer.
- The waterproof sealant is made of environment-friendly materials, showing high insulation, heat conduction and flame retarding.
- It is fitted with a composite copper shell (optional glass fiber reinforced plastic shell) in which waterproof sealants are injected, and the protective layer is made of flame-retardant composite insulating materials to ensure reliable waterproof performance and flame-retardant performance of joints.

Storage conditions

- The original and unopened package shall be stored in a dry and ventilated position with at the room temperature of 5 to 35°C;
- The period of validity for installing the stress cone is one year (from the date of manufacture);
- The shelf life of strips, seal rings and silicone grease is three years;
- The shelf life of cable sealants is two years;
- Metal parts could be stored for a long time under the condition of original sealed package and no oxidation, which shall not be used in case of rusting.

Applicable cable specifications

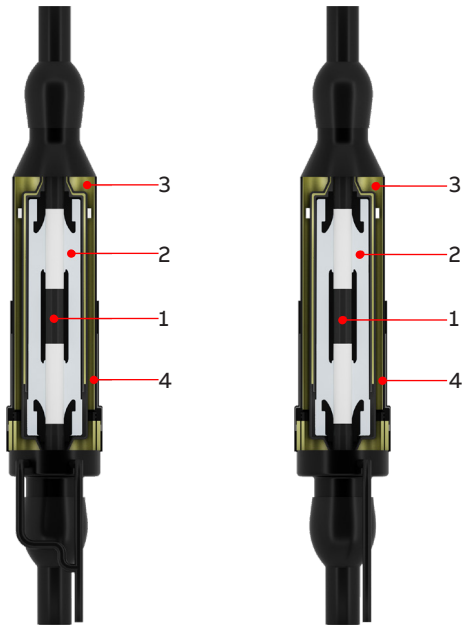
Insulation OD	50-85 mm
Cross section of conductor	240-1600 mm ²
Outer cable sheath	80-120 mm

Product weight and dimensions

Weight	≈90 kg/pcs
Length	1500 mm
OD	Φ240 mm

Shipping dimensions (package size, weight)

Model	Weight	Volume
G1J1126	≈110 kg	0.5 m ³
G1J5126	≈110 kg	0.5 m ³



Integral prefabricated rubber
insulating parts - insulated joint

Integral prefabricated rubber
insulating parts - straight joint





Notes



Contact Us

www.abb.com

ABB China Contact Center

Hotline (China): 400-820 9696

800-820 9696 (fix line only)

Hotline (Overseas): +86-21-3318 4688

E-mail: contact.center@cn.abb.com