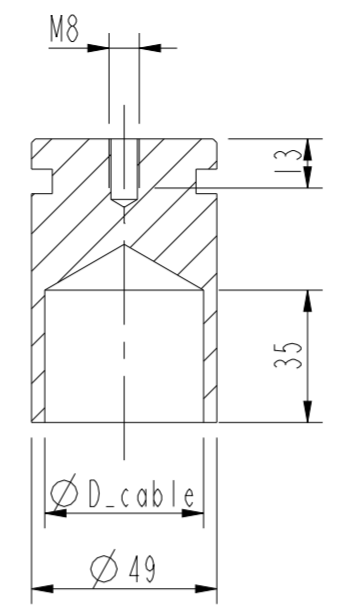
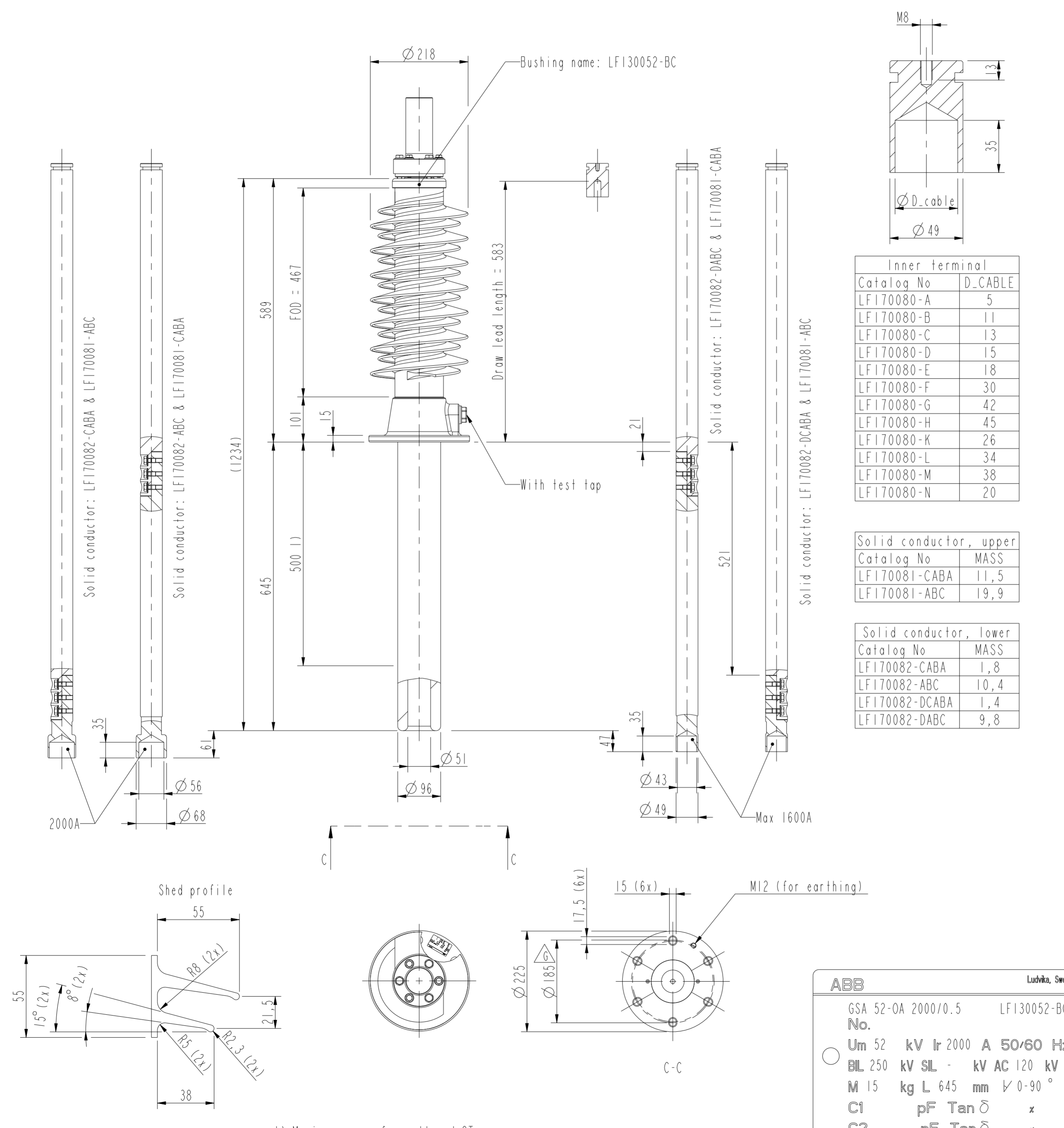


This document is issued by means of a computerized system. The digitally stored original is electronically approved. The approved document has a date entered in the "Approved"-field. A manual signature is not required.

Revision: Revision text
G Dimension updated.

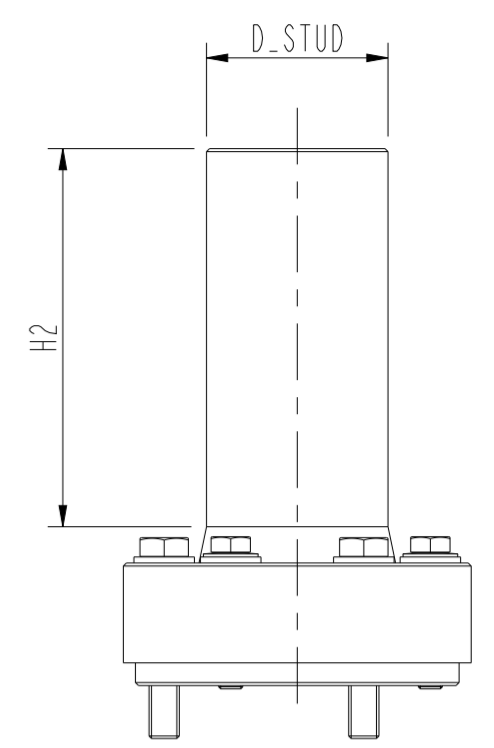


Inner terminal	
Catalog No	D_CABLE
LFI70080-A	5
LFI70080-B	11
LFI70080-C	13
LFI70080-D	15
LFI70080-E	18
LFI70080-F	30
LFI70080-G	42
LFI70080-H	45
LFI70080-K	26
LFI70080-L	34
LFI70080-M	38
LFI70080-N	20

Solid conductor, upper	
Catalog No	MASS
LFI70081-CABA	11,5
LFI70081-ABC	19,9

Solid conductor, lower	
Catalog No	MASS
LFI70082-CABA	1,8
LFI70082-ABC	10,4
LFI70082-DCABA	1,4
LFI70082-DABC	9,8

Outer terminal				
Catalog No	MATERIAL	MASS	H2	D_STUD
LFI70079-A	Al	2,3	125	60
LFI70079-B	Al	1,5	125	30
LFI70079-C	Cu	6,1	125	60
LFI70079-D	Cu	3,5	125	30
LFI70079-E	Cu/Sn	6,1	125	60
LFI70079-F	Cu/Sn	3,5	125	30
LFI70079-G	Cu/Ag	6,1	125	60
LFI70079-H	Cu/Ag	3,5	125	30
LFI70079-K	Cu	4,5	150	40
LFI70079-L	Cu	3,2	75	M30x2
LFI70079-M	Cu/Sn	4,1	125	38
LFI70079-N	Cu/Sn	3,3	125	26
LFI70079-P	Cu/Ag	3,2	125	1 1/8" UNF
LFI70079-R	Al	2,3	140	60
LFI70079-S	Cu/Sn	4,1	125	1 1/2" UNF
LFI70079-AD	Cu/Ag	3,7	80	40
LFI70079-AE	Cu	3,7	80	40



DENOMINATION according to CLC/TS 50458:2006
52/250/1250-E500

ELECTRICAL DATA acc. to IEC 60137			
Ratings	Rated voltage	52	kV
	Rated phase-to-earth voltage	30	kV
	Max. phase to earth voltage, temporary	52	kV
	Max. current with Cu-conductor	2000	A
	Max. current with stranded cable 740 mm ²	1250	A
	Dry lightning impulse	250	kV
	Wet power frequency	95	kV
Routine test	Dry power frequency	120	kV
	Capacitance	Nominal capacitance	502 pF

GENERAL DATA			
Silicone rubber insulator	Creepage distance	1642	mm
	Protected creepage distance	700	mm
	Color	Light gray	ANSI 70
Mass	Mass bushing	15	kg
Cantilever load	Cantilever test load, according to IEC 60137	4000	N
	Max. cantilever operating load, bushing	2000	N
Ambient air temperature		-50 to +40	°C
Mounting and service instructions		2750515-115	

ELECTRICAL DATA acc. to ANSI C57.19.00			
Ratings	Insulation class	46	kV
	Rated max. line to ground voltage	29	kV
	Max. current with Cu-conductor	2000	A
	Max. current with stranded cable 740 mm ²	1250	A

Dim. requirements acc. to C57.19.1 not fulfilled			
Approved 2020-03-25	Document Kind Outline Drawing	Based on doc. id	Work order id
Company ABB Technology Ltd	Title, Supplementary title Dimension drawing GSA 52-OA 2000/0.5		
Responsible Department SEABB-9AAE300824	Måttskiss GSA 52-OA 2000/0.5		
Document id 2751362-ABC		Status Released	Revision G
ABB		Iteration 6	Sheet 1/1

ABB Ludvika, Sweden

GSA 52-OA 2000/0.5 LFI30052-BC
No.

Um 52 kV Ir 2000 A 50/60 Hz
BIL 250 kV SIL - kV AC 120 kV
M 15 kg L 645 mm \sphericalangle 0-90°

C1 pF Tan δ x
C2 pF Tan δ x

1) Maximum space for wall and CT.

We reserve all rights in this document and in the information contained therein. Reproduction, use or disclosure to third parties without express authority is strictly forbidden.