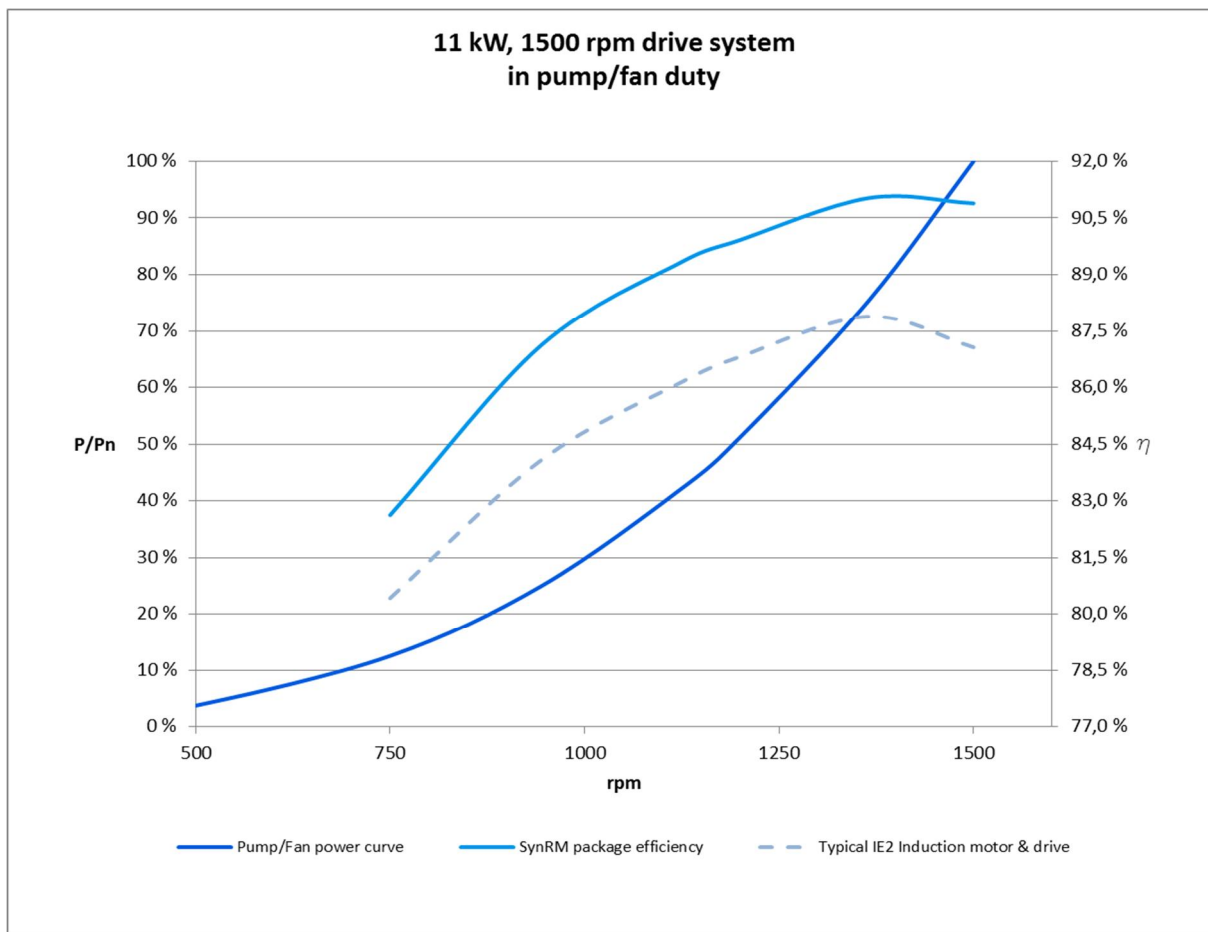


Manufacturer's statement

ACS880-01 and IE4 SynRM motor package efficiency

Drive: ACS880-01-25A5-3

Motor: M3BL 160MLA, 3GBL162104-ASC, P_n 11 kW, 1500 rpm



Speed	Speed rpm	P/P _n	Package efficiency
50 %**	750	13 %**	82.6 %
63 %	945	25 %	87.1 %
75 %	1125	42 %	89.3 %
80 %	1200	51 %	89.9 %
91 %	1365	75 %	91.0 %
100 %**	1500	100 %**	90.9 %*

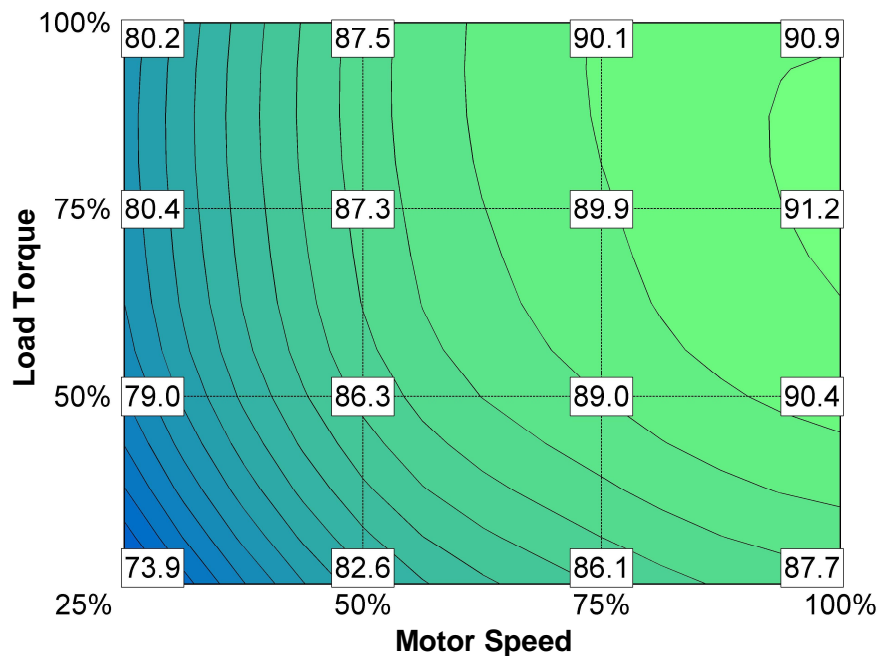
*Estimated tolerance according to IEC 60034-1:

≤150kW: 0.15 x (100 - package efficiency (%)) at the nominal point

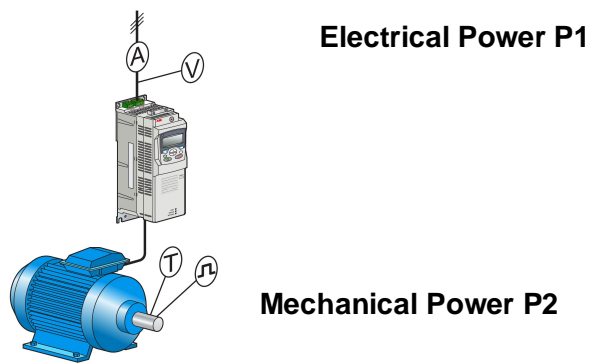
>150kW: 0.10 x (100 - package efficiency (%)) at the nominal point

**Measurement points according to EN 50598-2

Package efficiency [%] for applications with other load characteristics:



Points of measurement



Efficiency $\eta = P2/P1$

Efficiency measurements were made at:

	ABB verification laboratory, Vaasa	X	ABB verification laboratory, Västerås
	ABB verification laboratory, Helsinki		