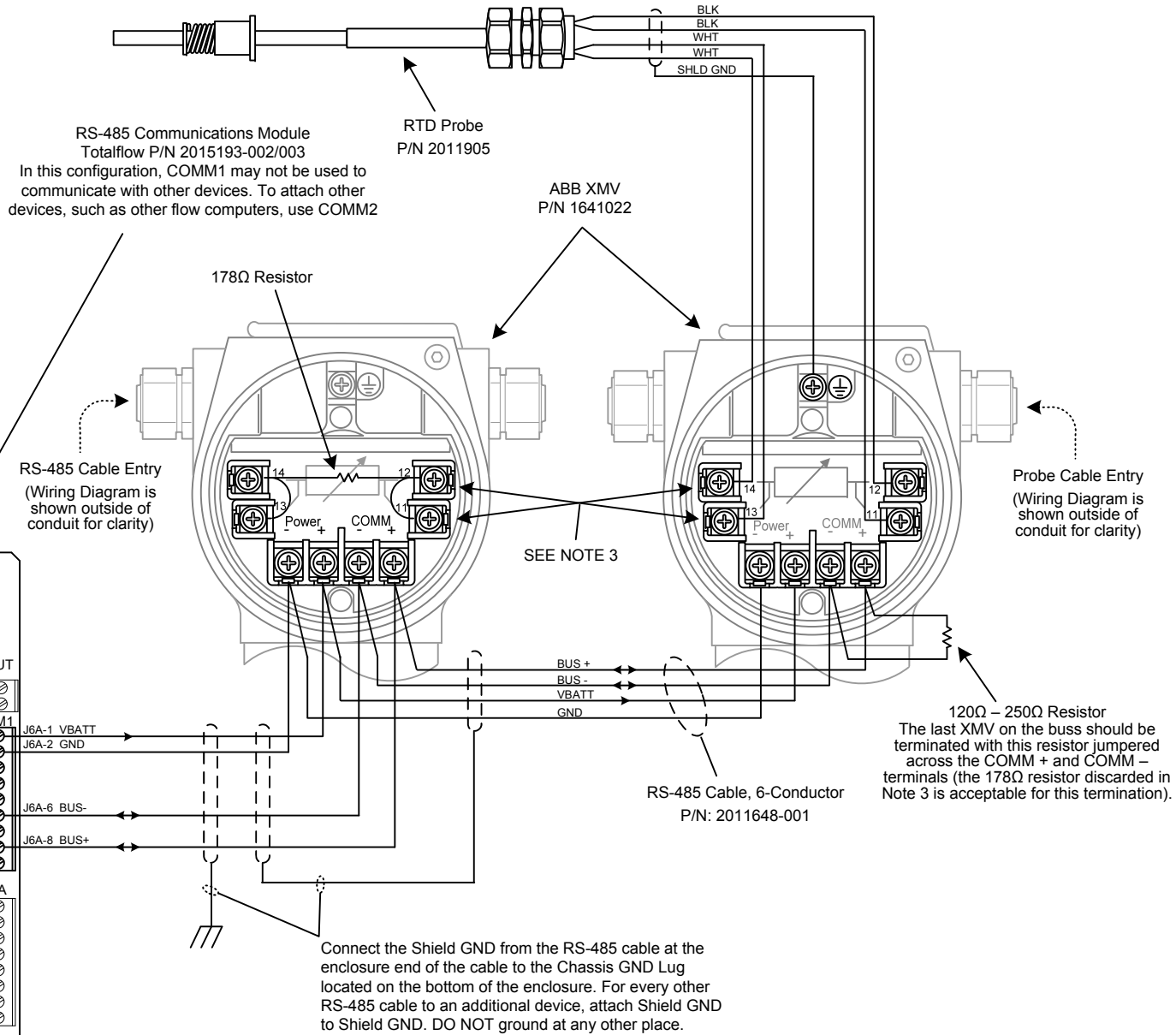
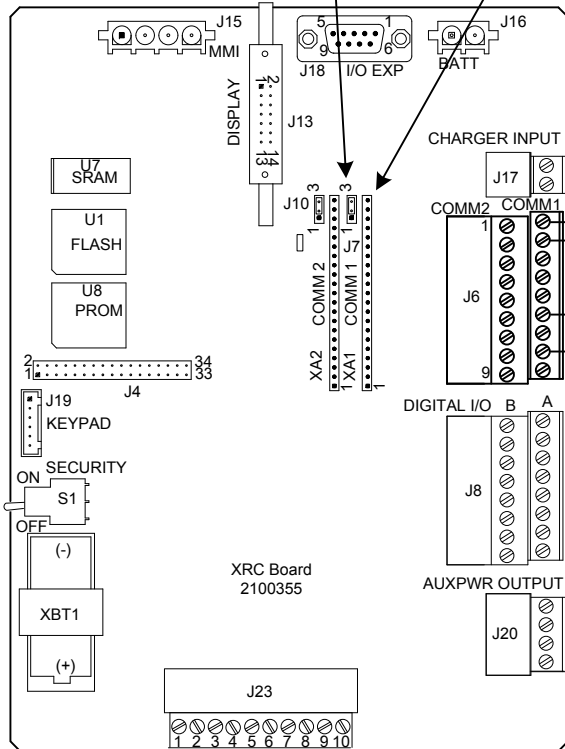
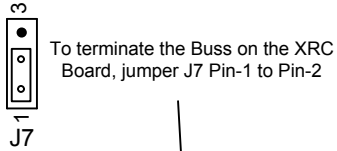


**NOTES:**

1. **WARNING:** This drawing does not completely illustrate the installation methods required for hazardous locations. Prior to any installation in a Classified Hazardous Location, verify installation methods by the ControlDrawing referenced on the product's name tag and national and local codes.
2. To access the XMV termination board, remove the enclosure rear cover.
3. For RTD installation, remove jumpers from XMV terminals 11-12, 13-14 and the 178Ω resistor from terminals 12-14.
4. The RS-485 buss must be wired in a daisy-chain configuration. Star configurations are not allowed.
5. Maximum accumulated length for the RS-485 buss is 4000 feet.



REF: 2101576-WI

	TOTALFLOW	ACTION	DOC TYPE	TITLE	DWG NO.	REV	SHEET
	Products	D23858	UD	XRC (2100355 BD) COMM1 (RS-485) TO XMV MODBUS W/RTD	2102347	AB	1 OF 1