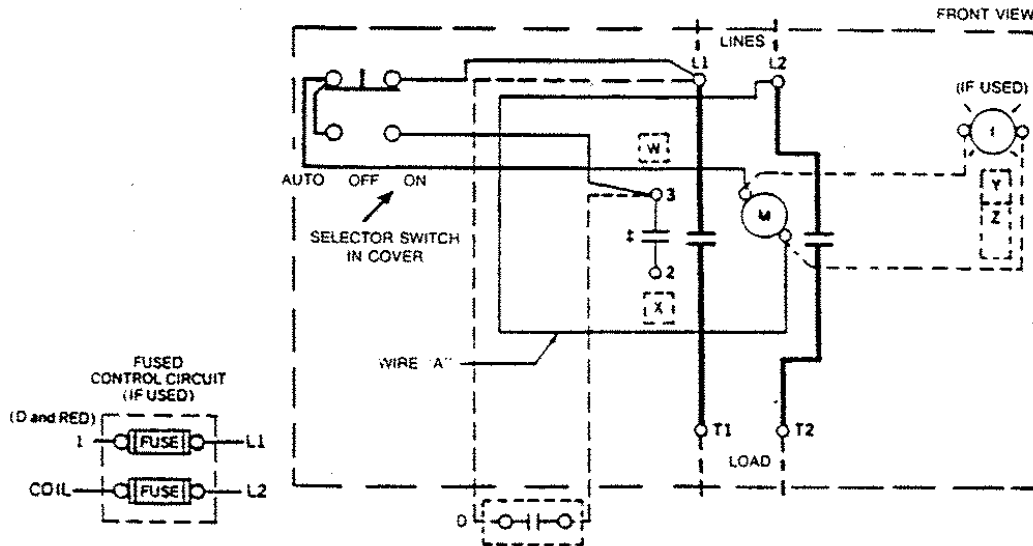




GEJ-7206 Information Label

CR360L Lighting Contactor

30 Ampere-Single-phase With Selector Switch



M-LINE CONTACTOR

I-INDICATING LIGHT

D-MAINTAINING CONTACT PILOT DEVICE

Use 75°C, copper conductors only, for field wiring. Torque line and load terminals to 20 lb-in.

FOR SEPARATE CONTROL-Remove wire "A". Disconnect wire from selector switch at L1. Connect separate control source to coil and wire from selector switch. Connect external maintaining contact pilot device to #3 on contactor and wire from selector switch.

NOTE: Refer to the National Electrical Code. Additional control circuit overcurrent protection may be required.

Wire "A" has been omitted at factory on all forms having a coil voltage of 120 volts or less.

COIL (Order 15D21G plus coil suffix number per table below)

60 Hz	115-120V	200-208V	230-240V	—	460-480V	575-600V
50 Hz	110V	—	220V	380V	440V	550V
Coil Suffix	002	023	003	064	004	005

The following accessory kits may be installed on this device.

AUX CONTACT CR305X100A, B, C, D, E

CONTROL CIRCUIT FUSE CR305X141A, B, C, D

For CSA-GND KIT

1/2-IN CONDUIT 55-213403G001

3/4-IN CONDUIT 55-213403G002

EXTRA AUXILIARY CONTACTS				
Final Suffix Letter Of CR Number	Contact Location, See Diagram			
	W	X	†Y	†Z
A (Or None)				
B				
C				
D				
E				
F				
G				
H				
J				
†Z	No Holding Interlock			

† Not available when Control Circuit Fuse Kit is used.

PRINCIPAL RENEWAL PARTS

4 Movable & B Sta Cont.546A301G002

