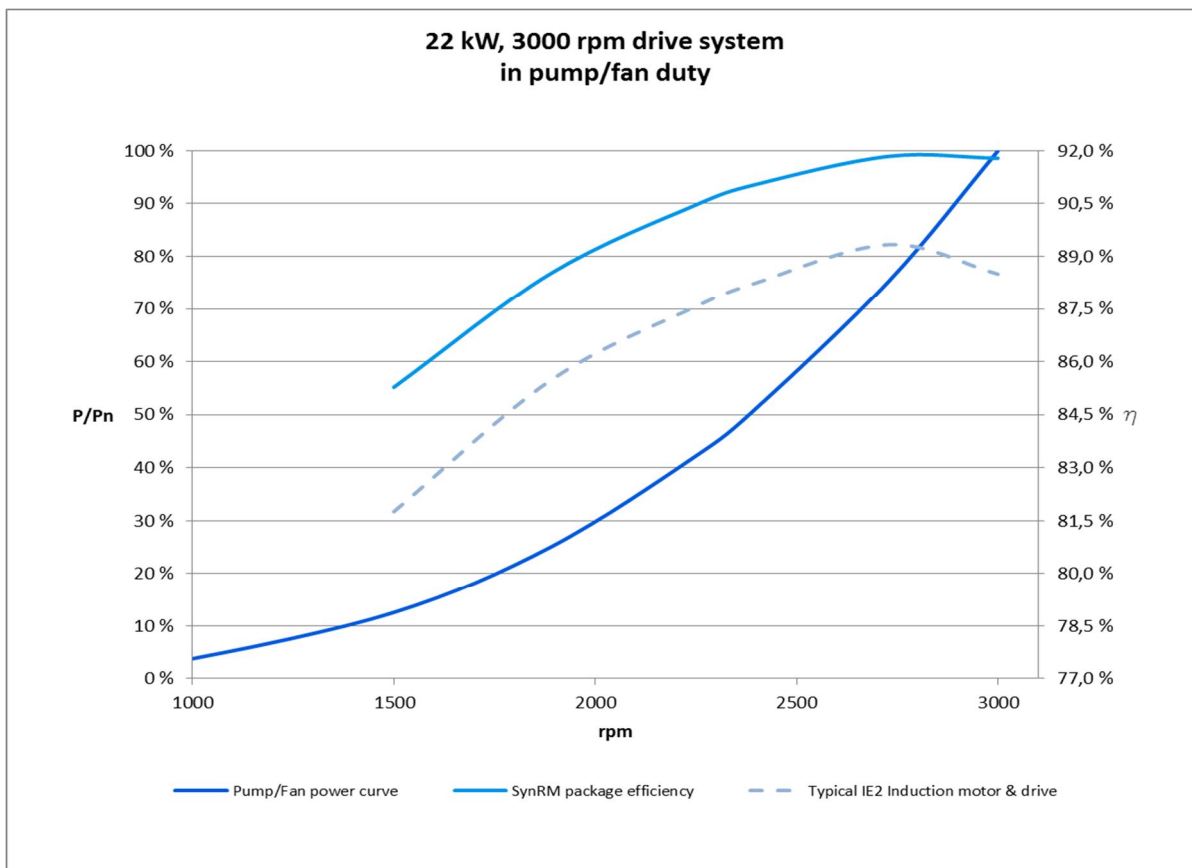


Manufacturer's statement

ACS880-01 and IE4 SynRM motor package efficiency

Drive: ACS880-01-050A-3

Motor: M3BL 180MLA, 3GBL182101-ASC, P_n 22 kW, 3000 rpm



Speed	Speed rpm	P/P _n	Package efficiency
50 %**	1500	13 %**	85.3 %
63 %	1890	25 %	88.5 %
75 %	2250	42 %	90.5 %
80 %	2400	51 %	91.1 %
91 %	2730	75 %	91.8 %
100 %**	3000	100 %**	91.8 %*

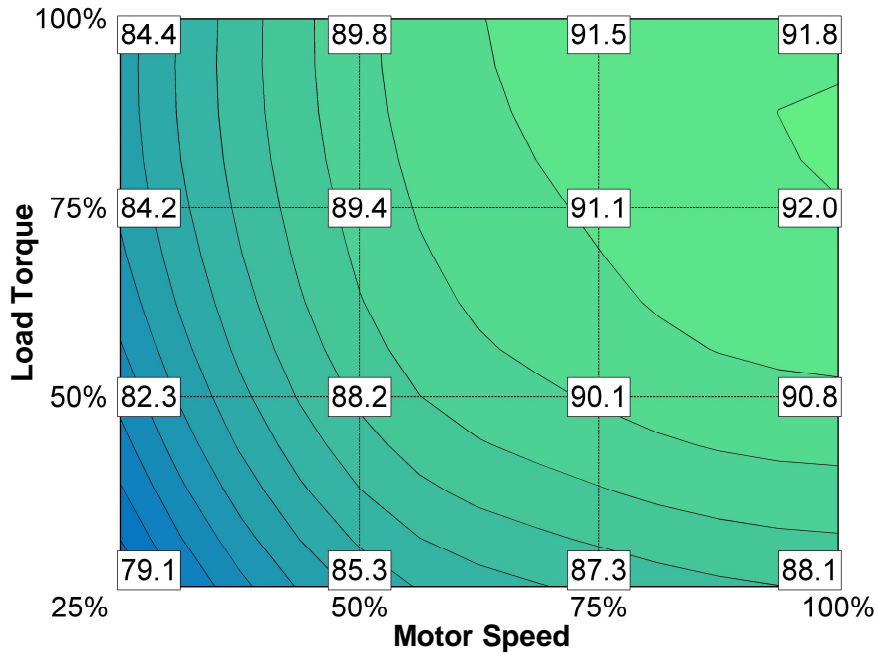
*Estimated tolerance according to IEC 60034-1:

≤150kW: 0.15 x (100 - package efficiency (%)) at the nominal point

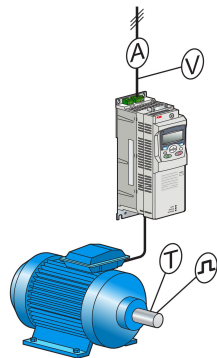
>150kW: 0.10 x (100 - package efficiency (%)) at the nominal point

**Measurement points according to EN 50598-2

Package efficiency [%] for applications with other load characteristics:



Points of measurement



Electrical Power P1

Mechanical Power P2

Efficiency $\eta = P2/P1$

Efficiency measurements were made at:

	ABB verification laboratory, Vaasa	X	ABB verification laboratory, Västerås
	ABB verification laboratory, Helsinki		