

We reserve all rights in this document and in the information contained therein. Reproduction, use or disclosure to third parties without express authority is strictly forbidden. © ABB 19

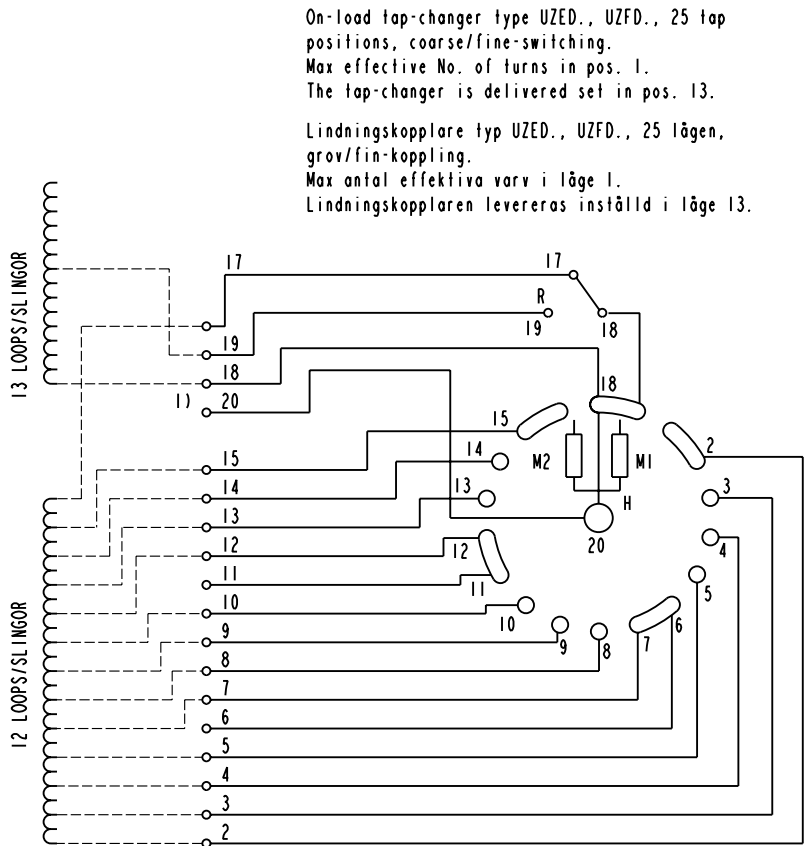
Pos. Läge	R connects förbinder	H connects förbinder
1	17-18	2-20
2		3-20
3		4-20
4		5-20
5A		6-20
5		7-20
6		8-20
7		9-20
8		10-20
9A		11-20
9		12-20
10		13-20
11		14-20
12A	17-19	15-20
12		18-20
13		2-20
13A		3-20
14		4-20
14A		5-20
15		6-20
16		7-20
17		8-20
18		9-20
18A		10-20
19		11-20
20	12-20	
21	13-20	
22	14-20	
22A	15-20	
23		
24		
25		

A position with letter is a through position and gives the same voltage as the normal position.

Läge med bokstav är ett genomloppsläge och ger samma spänning som normalläget.

1) Connections between the terminals 20 of the three phases are included in the star-point type.

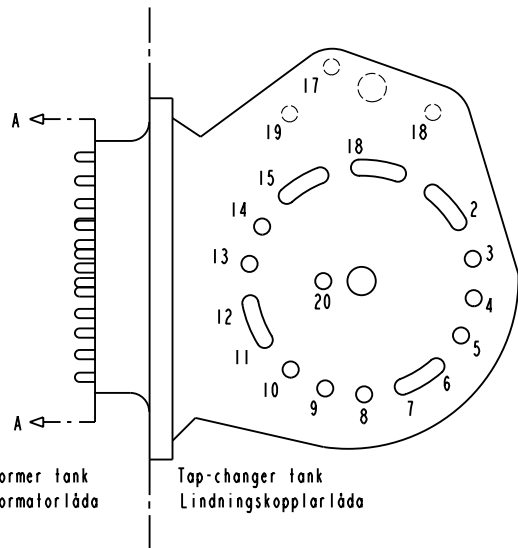
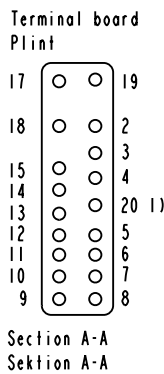
Förbindningar mellan uttag 20 i de tre faserna ingår i nollpunktsutförandet.



On-load tap-changer type UZED., UZFD., 25 tap positions, coarse/line-switching.
Max effective No. of turns in pos. 1.
The tap-changer is delivered set in pos. 13.
Lindningskopplare typ UZED., UZFD., 25 lägen, grov/fin-koppling.
Max antal effektiva varv i läge 1.
Lindningskopplaren levereras inställd i läge 13.

The tap-changer is shown in pos. 13
Lindningskopplaren visad i läge 13

R Change-over selector
Grov/fin-omkopplare
H Main contact
Huvudkontakt
M1, M2 Transition contacts
Motståndskontakter



Sheet	Cont	Year	Week
Rev In	Dept	Appd	Year Week
Accepted by R. Yngvesson	Accepted for prod by	Description (English) CONNECTION DIAGRAM	
Design checked by B-O. Stenestam	Drawn by L. Bergman	Description (own language) KOPPLINGSSHEMA	
Design checked by M. Hedlund	Issued by Dept COM/TKO 97 33	Lang	Sheet
Asea Brown Boveri		5492	0395-7
		Rev In	Cont

DATA ORIGINAL
File name
0395-7
Lang
Sheet
1
Rev In
Cont
-