



GEH2987

Neutral Kit

TNI65/TNI65A



Hazards of electrical shock or burn! Turn off power before working inside this equipment.

Used with:

400A Heavy Duty and General Duty Switches

Description

This device (Cat. No. TNI65) is U/L listed for use as an insulated groundable neutral and may be installed in 400Amp Type TG or TH fusible safety switches. Main lugs accept #2-600MCM or twin 250MCM copper or aluminum conductors. The complete kit consists of the following parts (see Fig. 1):

- a neutral block with #6-250MM mounted lug,
- two unmounted lugs (one for line, one for load),
- mounting nuts and lock washers for above lugs,
- one long bonding screw.

Installation

1. Consult switch rating label for proper location of neutral.
2. Remove two filler screws or round discs (if present) from tapped holes in enclosure back wall.
3. Using holes uncovered in Step 1, fasten neutral to switch back wall with mounting screws, lock washers and flat washers provided.
4. Install the #2-600MCM line and load lugs using nuts and lock washers provided (see Fig. 2).
5. If bonding is required, insert the long bonding screw through the hole in the neutral (Fig. 2) and thread it into tapped hole in switch back wall.

Note: This tapped hole is covered in rain tight enclosures-screw provided will penetrate this disc.

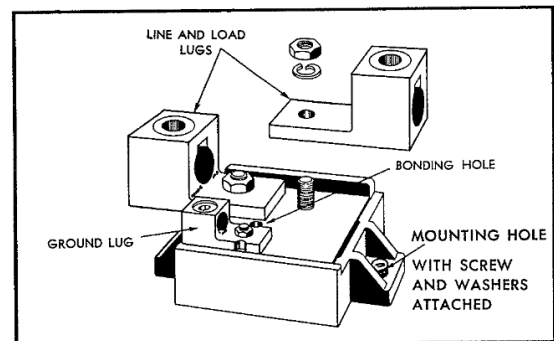


Fig. 1. TNI65 Neutral Kit

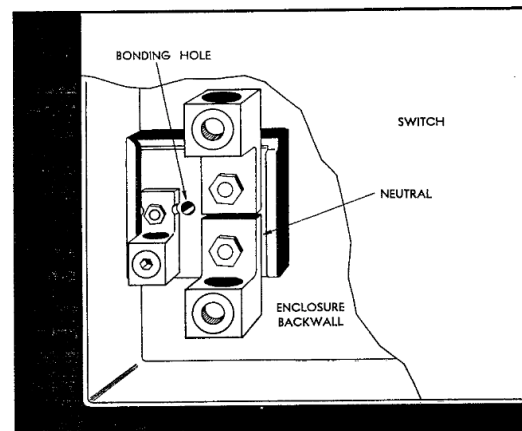


Fig. 2. Typical installation of TNI65 Neutral Kit