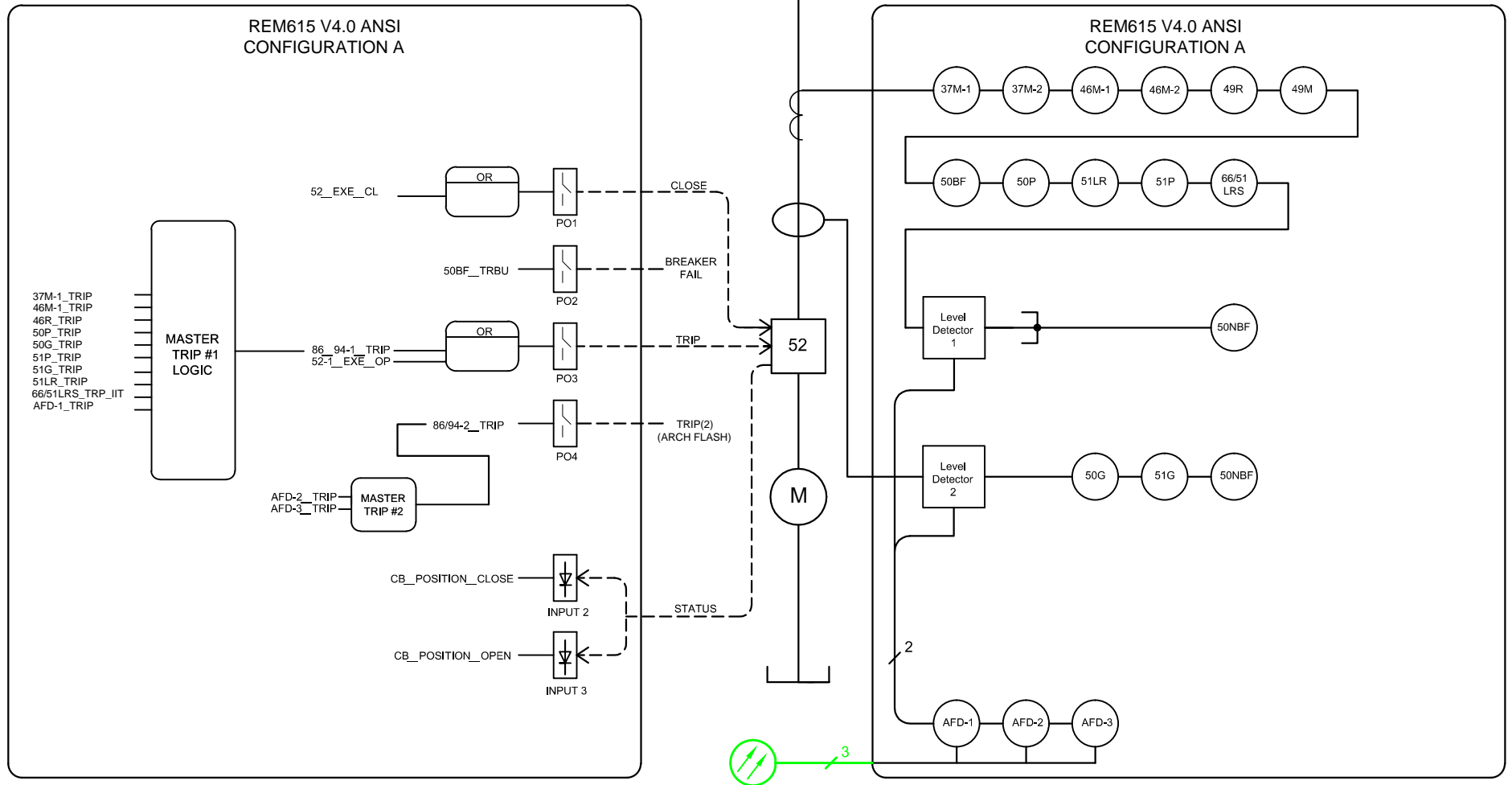


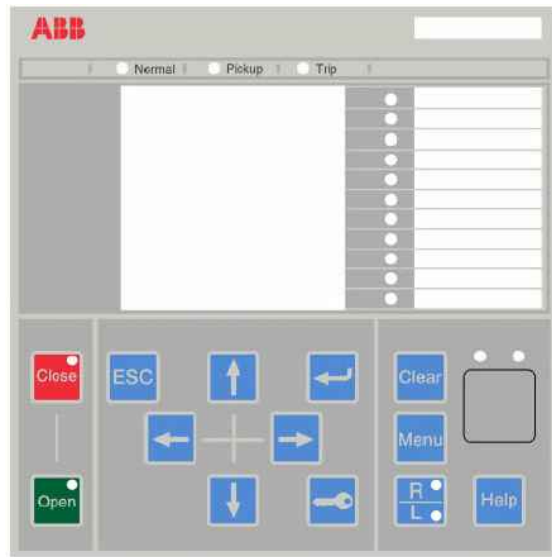
REM615_HAMAAAAFFE1BNN1XE



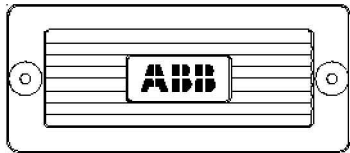
Notes:

1. PCM600 ACT (Application Configuration Tool) logic is shown in default state.

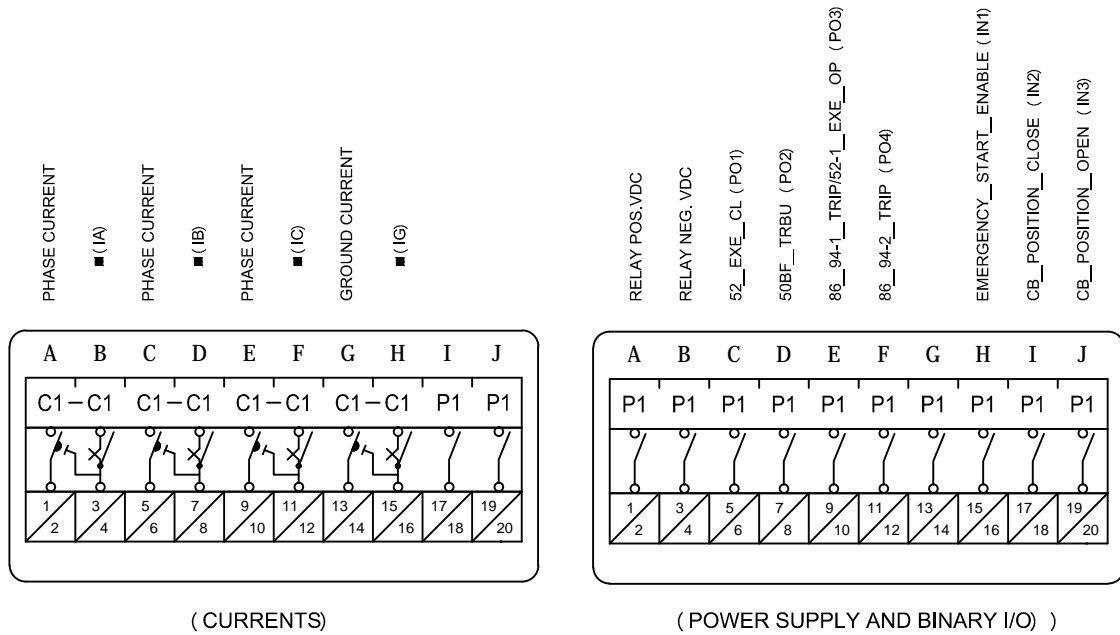
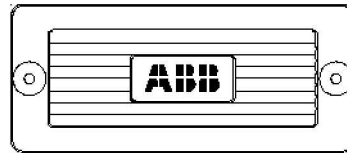
REM615_HAMAAAAFFE1BNN1XE



FT-1/TS1
Style No: 837A407G01
Code No: 083



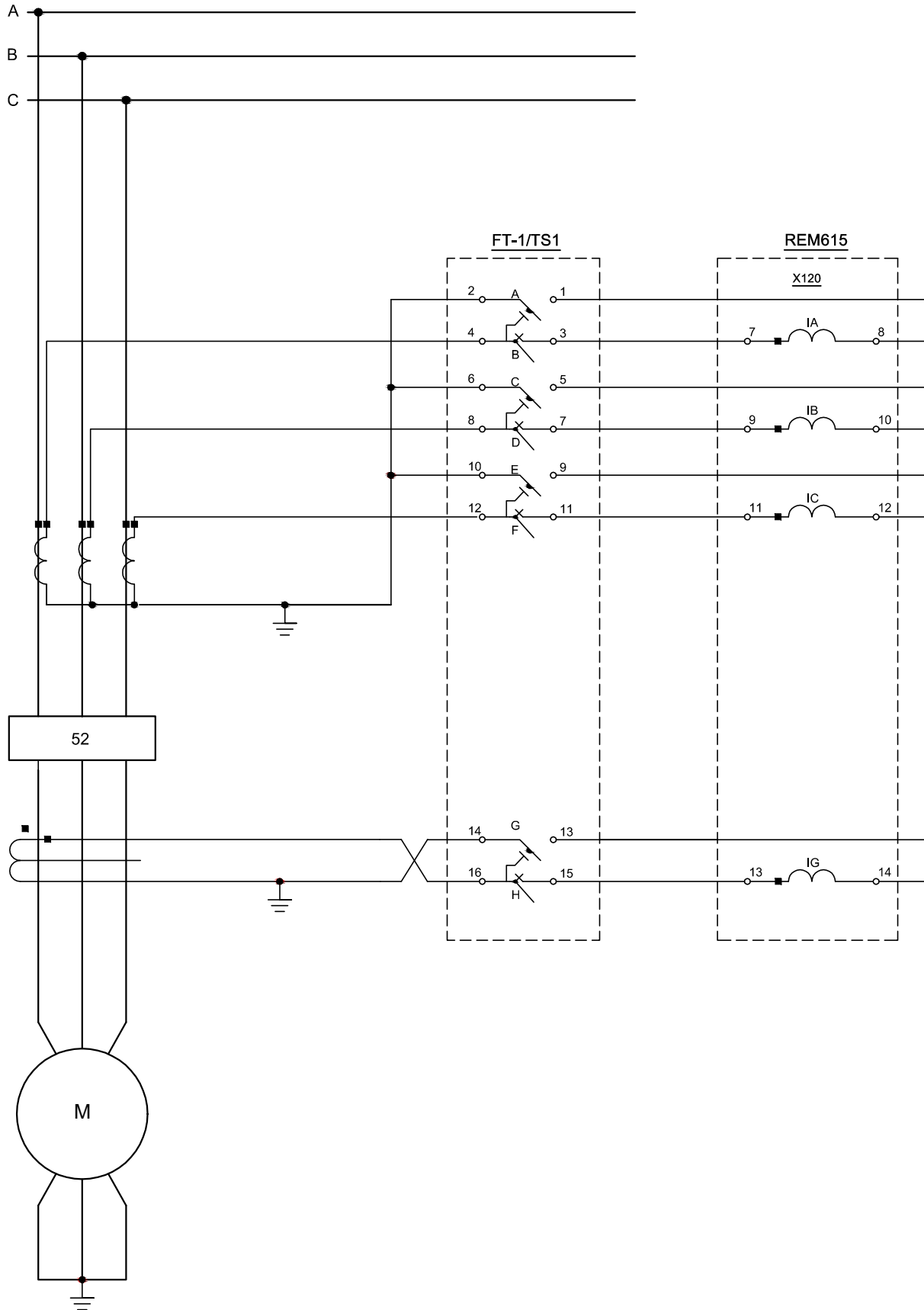
FT-1/TS2
Style No: 129A501G01
Code No: 001



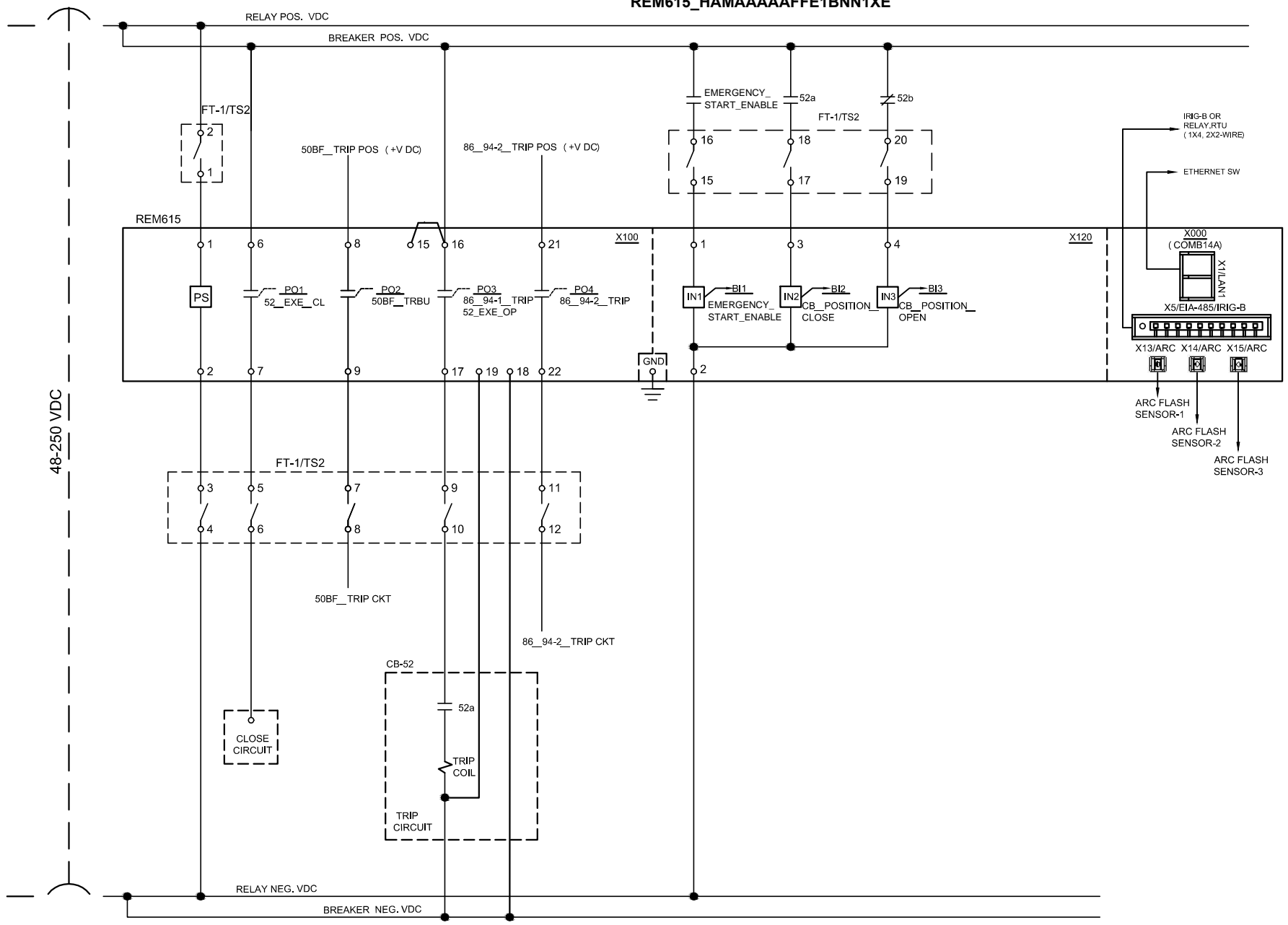
General Notes:

1. Style and code numbers for FT-1 switches provide black covers and handles, screw terminals and standard depth. Poles selection follows arrangement shown in this drawing set. For custom designs, different selection options can be made by using FT-1 configurator at ft1switch.com.
2. Refer to 615 series ANSI Installation Manual for relay and cutout dimensions (Document ID: MACCO51065-MB, Revision: D, Product version 4.0)

REM615_HAMAAAAFFE1BNN1XE



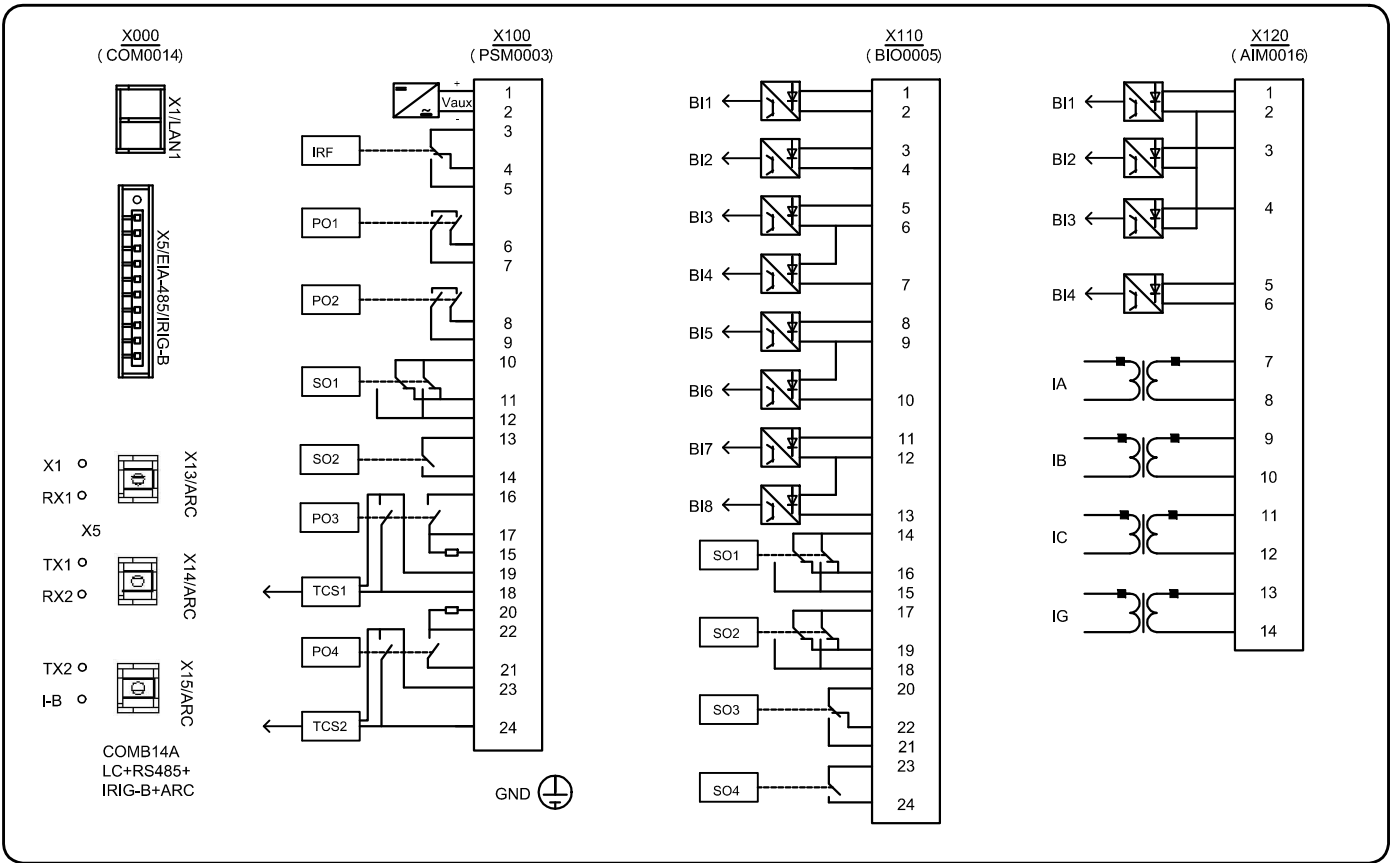
REM615_HAMAAAAAFE1BNN1XE



General Notes:

1. Binary I/O shown is from default PCM600 Application Configuration Tool (ACT) .
2. Connections shown are typical though more connections may be needed for specific application.

REM615_HAMAAAAFFE1BNN1XE



RR
REM615

X000-X1:
X000-X5:
X000-X13:
X000-X14:
X000-X15:

X100-1: SS1
X100-2: SS3
X100-3:
X100-4:
X100-5:
X100-6:
X100-7: SS5
X100-8:
X100-9: SS7
X100-10:
X100-11:
X100-12:
X100-13:
X100-14:
X100-15: X100-16
X100-16: X100-15
X100-17: SS9
X100-18:
X100-19:
X100-20:
X100-21:
X100-22: SS11
X100-23:
X100-24:

X110-1:
X110-2:
X110-3:
X110-4:
X110-5:
X110-6:
X110-7:
X110-8:
X110-9:
X110-10:
X110-11:
X110-12:
X110-13:
X110-14:
X110-15:
X110-16:
X110-17:
X110-18:
X110-19:
X110-20:
X110-21:
X110-22:
X110-23:
X110-24:

X120-1: SS15
X120-2:
X120-3: SS17
X120-4: SS19
X120-5:
X120-6:
X120-7: TT3
X120-8: TT1
X120-9: TT7
X120-10: TT5
X120-11: TT11
X120-12: TT9
X120-13: TT15
X120-14: TT13

GND:

