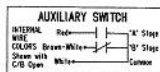


NOTES:

7. SEE OUTLINE DRAWING 1005437OSH4.
6. SEE 1005437OSH5 AND 1005437OSH6 FOR ADDITIONAL INFORMATION.
5. CUSTOMER'S LOCATION FOR DRILLING HOLE FOR HORIZONTALLY OR VERTICALLY INTERCONNECTED MECHANICAL INTERLOCK. SEE BOTTOM OR SIDE VIEW.
4. 3.74 [95] MINIMUM DISTANCE ABOVE SUBSTRUCTURE TO ANY METAL IN AN AREA 5.31 X 16.00 [34.9 X 406.4] DUE TO ARC CHAMBER VENTING.
3. ANY COMPARTMENT METAL IN 10.00 X 14.00 [254.0 X 355.6] AREA BELOW (AND ABOVE AT 1600A MINIMUM STACKING HEIGHT) MUST BE REMOVED. REF UL891 DEAD-FRONT SWITCHBOARDS STANDARD-ELECTRICAL SPACING REQUIREMENTS.
2. DIMENSIONS IN BRACKETS ARE IN [MILLIMETERS].
1. ALL OUTLINE DIMENSIONS ARE THE SAME FOR MANUALLY AND ELECTRICALLY OPERATED DEVICES.

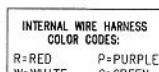
		Industrial Solutions		
		POWER BREAK II CIRCUIT BREAKER 1600-2000A		
THIRD ANGLE	SHEET#	DWG NO.	DATE	REV
	4 of 19	GEM3025	09/19	02



19 AUX. 11 "A"	1 AUX. 12 "A"
20 AUX. 11 "B"	2 AUX. 12 "B"
21 AUX. 11 COM	3 AUX. 12 COM
22 AUX. 9 "A"	4 AUX. 10 "A"
23 AUX. 9 "B"	5 AUX. 10 "B"
24 AUX. 9 COM	6 AUX. 10 COM
25 AUX. 7 "A"	7 AUX. 8 "A"
26 AUX. 7 "B"	8 AUX. 8 "B"
27 AUX. 7 COM	9 AUX. 8 COM
28 AUX. 5 "A"	10 AUX. 6 "A"
29 AUX. 5 "B"	11 AUX. 6 "B"
30 AUX. 5 COM	12 AUX. 6 COM
31 AUX. 3 "A"	13 AUX. 4 "A"
32 AUX. 3 "B"	14 AUX. 4 "B"
33 AUX. 3 COM	15 AUX. 4 COM
34 AUX. 1 "A"	16 AUX. 2 "A"
35 AUX. 1 "B"	17 AUX. 2 "B"
36 AUX. 1 COM	18 AUX. 2 COM

LEFT SIDE
TERMINAL BLOCK LABEL
BLOCK "A"

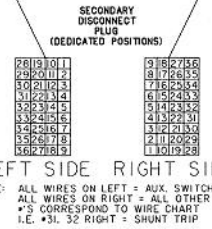
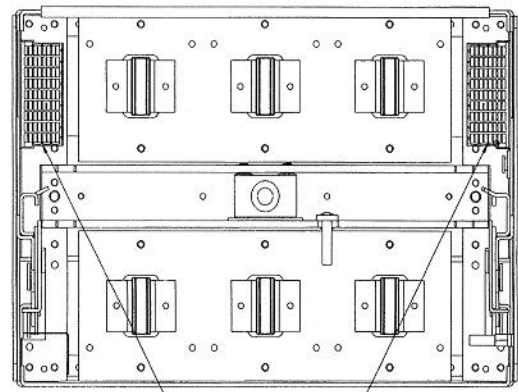
*SCREW TERMINAL POSITION RELATIVE TO FRONT OF CIRCUIT BREAKER



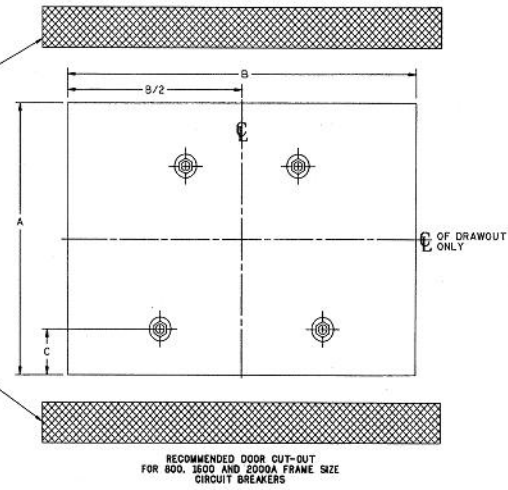
1 ELECT. OPER. +	16 ELECT. OPER. -
2 RMT. CHG. W	35 RMT. CHG. L
3 RMT. CLS. +	34 RMT. CLS. -
4 B.A. ONLY COW Y	33 CHG. IND. G
5 B.A. ONLY N.O. N	32 SHUNT TRIP B
6 B.A. ONLY N.C. P	31 SHUNT TRIP B
7 B.A. LOCKOUT N.O. W	30 U.V.R. L
8 B.A. LOCKOUT N.C. B	29 U.V.R. L
9 B.A. LOCKOUT N.O. W	28 U.V.R. L
10 B.A. LOCKOUT N.C. B	27 U.V.R. L
11 COMMENT- G	26 ZSI INPUT- W
12 COMMENT+ Y	25 ZSI INPUT+ G
13 C Ø VOLTS R	24 ZSI OUTPUT- W
14 B Ø VOLTS W	23 ZSI OUTPUT+ R
15 A Ø VOLTS L	22 D/O SWITCH W
16 24VOLTS DC- B	21 D/O SWITCH L
17 24VOLTS DC+ R	20 A H TAP B
	19 B H COM W

RIGHT SIDE
TERMINAL BLOCK LABEL
BLOCK "B"

WIRE CHART
NOTE: WIRE RANGE #18 THRU #12 SOLID OR STRANDED COPPER WIRE. TORQUE: 9.8-11 IN.



NOTE: ALL WIRES ON LEFT = AUX. SWITCH WIRES.
ALL WIRES ON RIGHT = ALL OTHER WIRING.
*S CORRESPOND TO WIRE CHART
I.E. *31, 32 RIGHT = SHUNT TRIP



FRAME RATING	BREAKER TYPE	BREAKER WEIGHT	DRAWOUT SUBSTRUCTURE	MINIMUM COMPARTMENT VOLUME	MINIMUM DOOR VENTILATION	STANDARD DOOR CUT-OUT			OPTIONAL DOOR CUT-OUT		
						A	B	C	A	B	C
800A	STATIONARY MOUNTED	71 LBS* [32.3KG]	N/A	3447 CU.IN. [56486CU.CM]	NONE	10 [254]	14 [356]	1.69 [42.9]	9.83 [249.7]	13.38 [339.9]	1.605 [40.8]
1600A		79 LBS* [35.9KG]				TRIM PLATE REQUIRED	FLUSH FRONT OR NON-HINGED DOOR CONSTRUCTION- TRIM PLATE MAY BE OMITTED				
2000A		125 LBS* [56.8KG]				TRIM PLATE REQUIRED	FLUSH FRONT OR NON-HINGED DOOR CONSTRUCTION- TRIM PLATE MAY BE OMITTED				
800A	DRAWOUT MOUNTED	96 LBS* [48.2KG]	34 LBS [24.5KG]	3780 CU.IN. [61943CU.CM]	NONE	10 [254]	14 [356]	N/A	9.83 [249.7]	13.38 [339.9]	N/A
1600A		125 LBS* [56.8KG]	68 LBS [30.9KG]	5670 CU.IN. [92915CU.CM]	NONE	TRIM PLATE REQUIRED	FLUSH FRONT OR NON-HINGED DOOR CONSTRUCTION- TRIM PLATE MAY BE OMITTED				
2000A		125 LBS* [56.8KG]	68 LBS [30.9KG]	5670 CU.IN. [92915CU.CM]	34.2 SQ.IN. [220.8 SQ.CM] TOTAL 29.5 SQ.IN. [190.9 SQ.CM] TOP 4.66 SQ.IN. [30.0 SQ.CM] BOTTOM	TRIM PLATE REQUIRED	FLUSH FRONT OR NON-HINGED DOOR CONSTRUCTION- TRIM PLATE MAY BE OMITTED				

N/A = NOT APPLICABLE
* ADD 9 LBS [4.1KG] FOR ELECTRICAL OPERATOR

TABLE 1

- NOTES:
- SEE OUTLINE DRAWING I0054370SH5.
 - BUSBARS OR CABLES SHOULD BE SIZED PER UL891 DEAD-FRONT SWITCHBOARDS STANDARD.
 - DIMENSIONS IN BRACKETS ARE [METRIC].

Industrial Solutions

by **ABB**

POWER BREAK II

CIRCUIT BREAKER WEIGHTS & VENTS INFO

THIRD ANGLE	SHEET#	DWG. NO.	DATE	REV
	5 of 19	GEM3025	09/19	02