


SAM600-VT wiring example

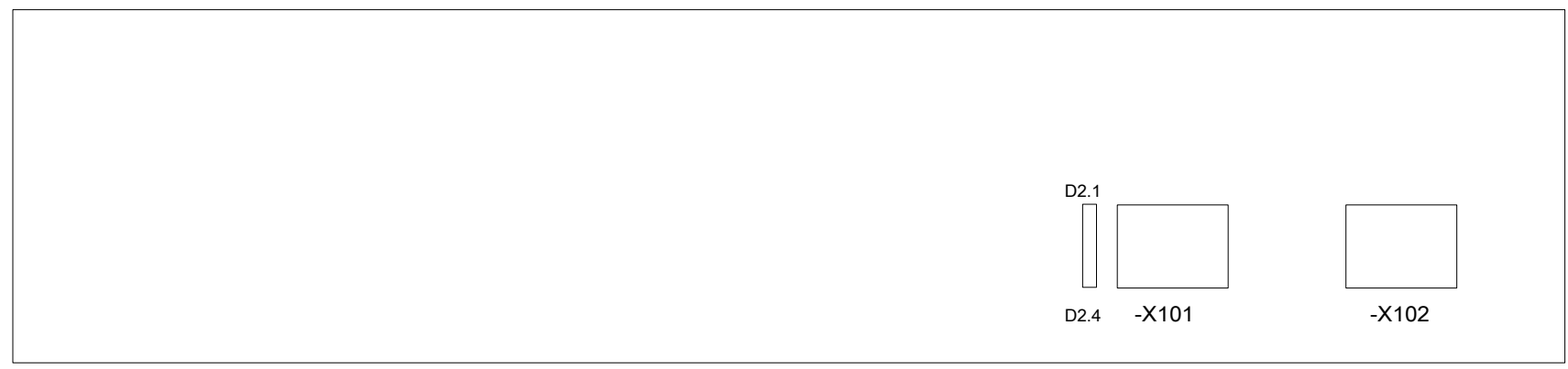
Based on 1KHL511671-A				Prepared	2016-05-13	Schnyder	Title	SAM600-VT wiring example		Doc. kind.	Circuit diagram		Ref.Des.	=Dn +BAN	
A	Release for Documentation	2016-05-13	Schnyder	Approved	2020-05-18	Meier	Title page	DCC EFS		PGGA-E		Rev. ind.	C	Language	en
B	Release for Documentation II	2016-06-28	Schnyder	Project SAM600 1.2 wiring example				Resp. dept.		C		Language	en		
C	Release for Documentation III	2020-05-18	Tavernier				Doc. no.		1KHL511911		Sheet	1			
Rev.	Revision note	Date	Name	No. sheets		7									



Sheet	n.sh.	Description 1	Description 2	Rev.	Revision note	Sheet	n.sh.	Description 1	Description 2	Rev.	Revision note	
A	1	2	Title page	C	Release for Documentation III							A
	2	3	List of contents	C	Release for Documentation III							
	3	4	Layout	B	Release for Documentation II							
	4	5	Voltage transformer	C	Release for Documentation III							
	5	6	Stand-alone merging unit	C	Release for Documentation III							
B	6	7	Parts list	C	Release for Documentation III							B
	7		Terminal table	C	Release for Documentation III							

Based on 1KHL511671-A					Prepared 2016-05-13		Schnyder		Title SAM600-VT wiring example		Doc. kind. List of contents		Ref.Des.	
A	Release for Documentation			2016-05-13	Schnyder	Approved 2020-05-18		Meier	List of contents		DCC EAB		=Dn +BAn	
B	Release for Documentation II			2016-06-28	Schnyder	Project SAM600 1.2 wiring example					Resp. dept. PGGA-E		Rev. ind. C	Language en
C	Release for Documentation III			2020-05-18	Tavernier						Sheet 2			
Rev.	Revision note			Date	Name				Doc. no. 1KHL511911		n. sheet 3			

© Copyright 2020 ABB. We reserve all rights in this document and in the information contained therein. Reproduction, use or disclosure to third parties without express authority is strictly forbidden.

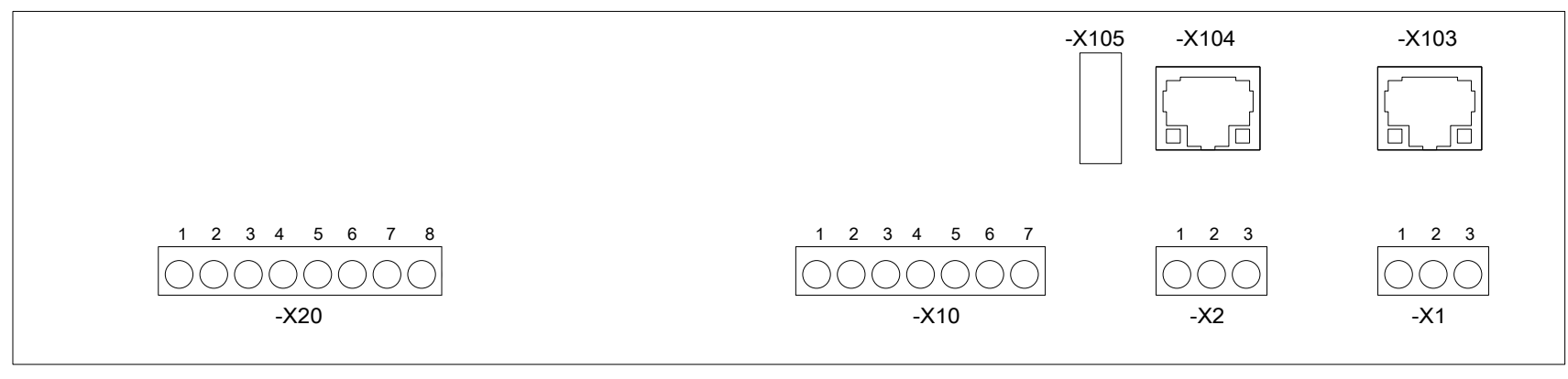
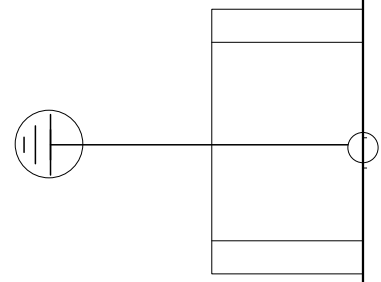


-D1



SAM600

- Ready
- Warning
- Alarm

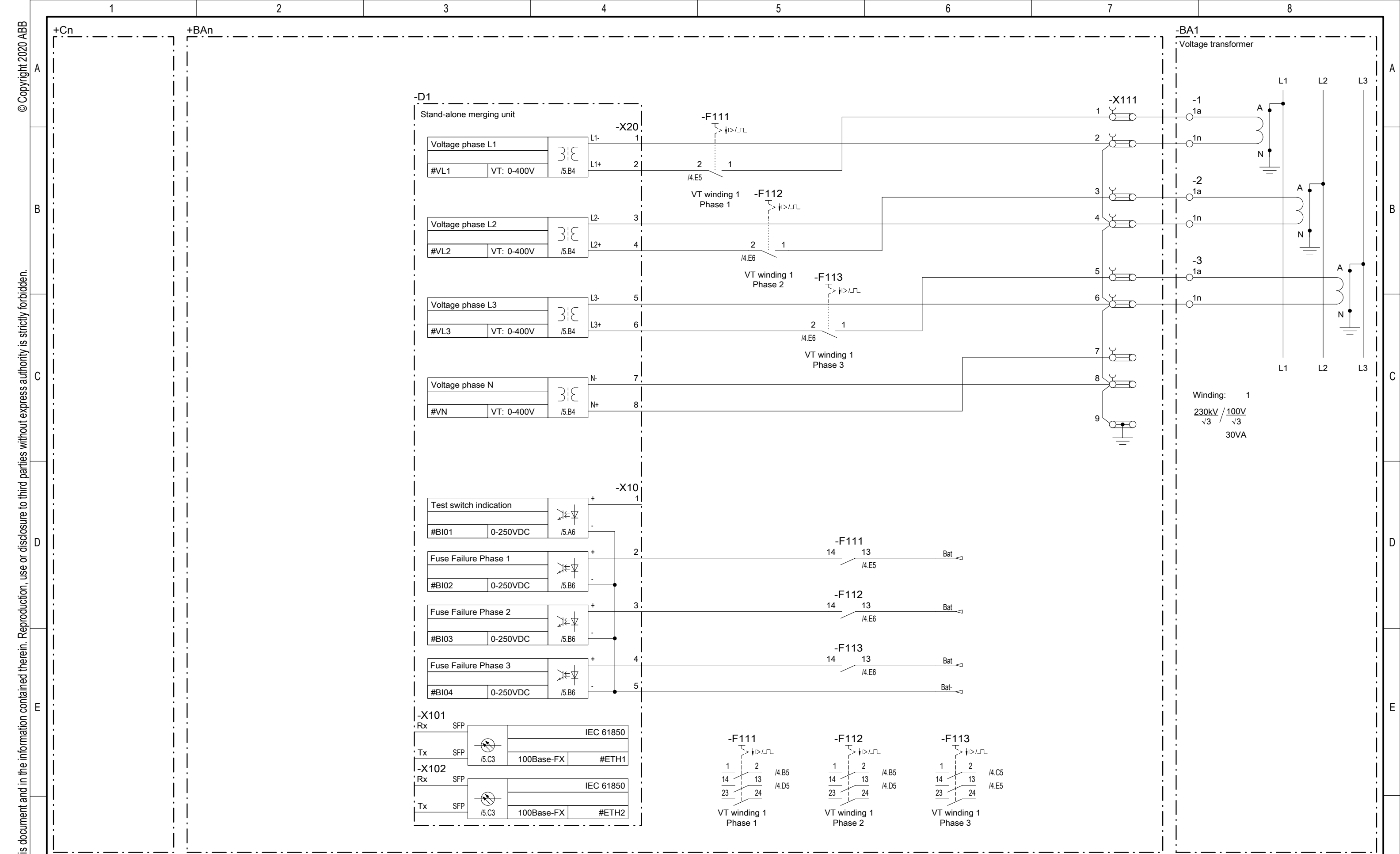


Based on 1KHL511671-A			
A	Release for Documentation	2016-05-13	Schnyder
B	Release for Documentation II	2016-06-28	Schnyder
C	Release for Documentation III	2020-05-18	Tavernier
Rev.	Revision note	Date	Name

Prepared	2016-05-13	Schnyder
Approved	2020-05-18	Meier
Project	SAM600 1.2 wiring example	

Title	SAM600-VT wiring example
Layout	Top View
ABB	

Doc. kind.	Assembly drawing	Ref.Des.	=Dn +BAn
	DCC ELU		
Resp. dept.	PGGA-E	Rev. ind.	C
		Language	en
Doc. no.	1KHL511911		Sheet 3
		n. sheet	4



Based on 1KHL511671-A			
A	Release for Documentation	2016-05-13	Schnyder
B	Release for Documentation II	2016-06-28	Schnyder
C	Release for Documentation III	2020-05-18	Tavernier
Rev.	Revision note	Date	Name

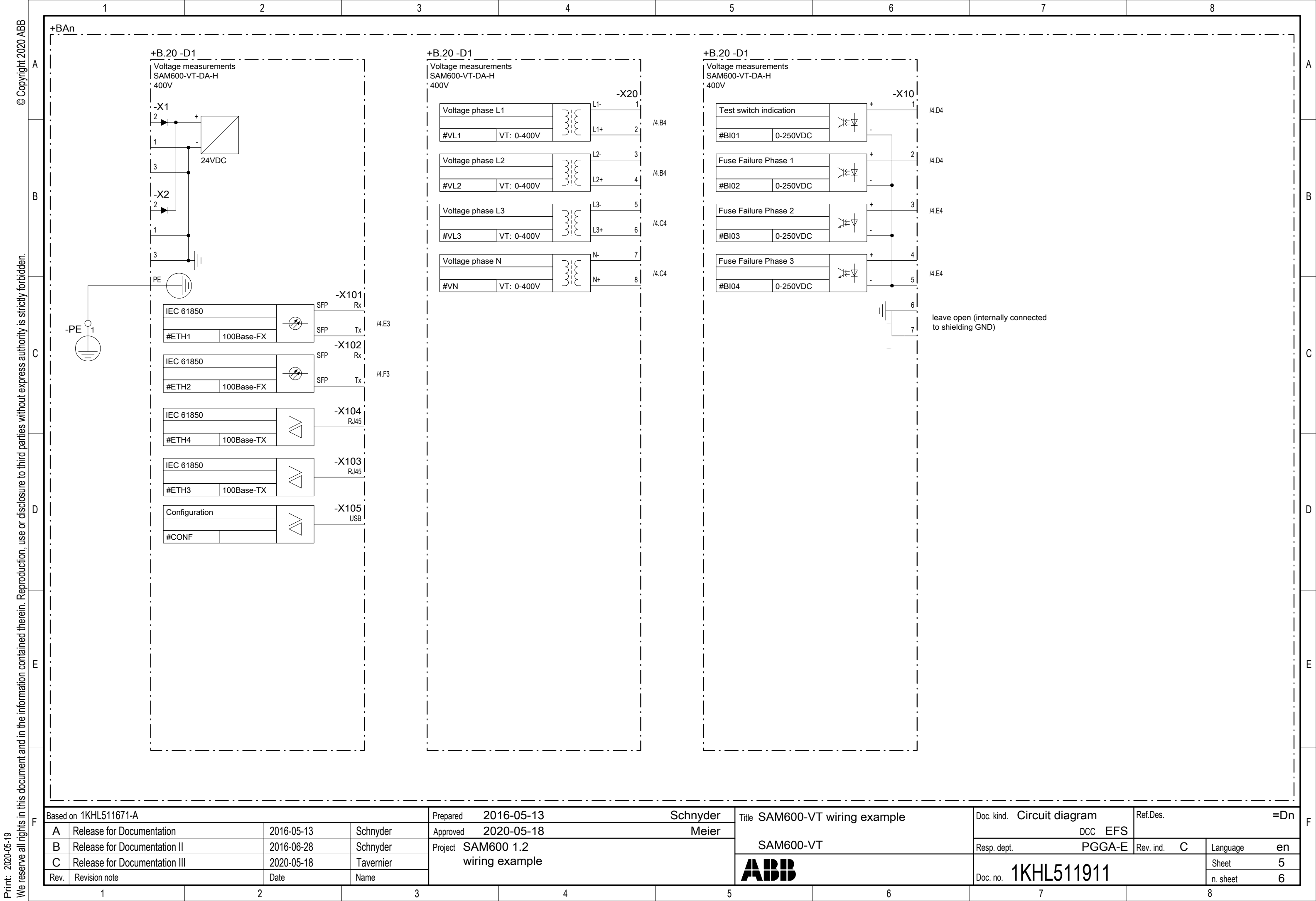
Prepared	2016-05-13	Schnyder
Approved	2020-05-18	Meier
Project	SAM600 1.2 wiring example	

Title	SAM600-VT wiring example
	Voltage transformer
	BA1
ABB	

Doc. kind.	Circuit diagram	Ref.Des.	=Dn
	DCC EFS		
Resp. dept.	PGGA-E	Rev. ind.	C
		Language	en
Doc. no.	1KHL511911	Sheet	4
		n. sheet	5

Print: 2020-05-19 We reserve all rights in this document and in the information contained therein. Reproduction, use or disclosure to third parties without express authority is strictly forbidden.

© Copyright 2020 ABB



© Copyright 2020 ABB

Print: 2020-05-19 We reserve all rights in this document and in the information contained therein. Reproduction, use or disclosure to third parties without express authority is strictly forbidden.

Based on 1KHL511671-A			
A	Release for Documentation	2016-05-13	Schnyder
B	Release for Documentation II	2016-06-28	Schnyder
C	Release for Documentation III	2020-05-18	Tavernier
Rev.	Revision note	Date	Name

Prepared	2016-05-13	Schnyder
Approved	2020-05-18	Meier
Project	SAM600 1.2 wiring example	

Title	SAM600-VT wiring example
	SAM600-VT
	ABB

Doc. kind.	Circuit diagram	Ref.Des.	=Dn
	DCC EFS		
Resp. dept.	PGGA-E	Rev. ind.	C
		Language	en
Doc. no.	1KHL511911	Sheet	5
		n. sheet	6

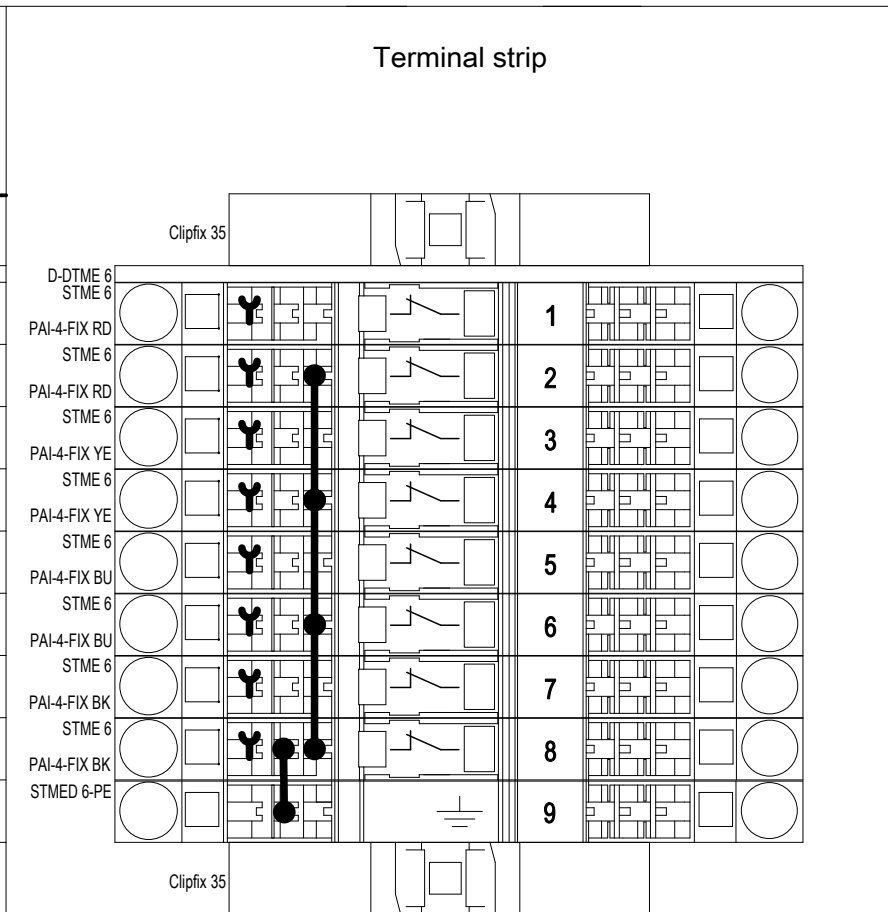
Pos.	Location	Device designation	Device description	Type designation	Technical data	Remark	Article number	Manufacturer	Manufacturer number	Qty.	Pages
1		-D1	Voltage measurement unit	SAM600-VT-DA-H	400V	4 measurement channels, 4 binary inputs	1KHL160062R1001H	ABB	SAM600*1.2-VT-DA-H	1	3,4,5
2		-F111	Miniature circuit breaker End bracket Auxiliary contact block	S 201 P-Z 4 Clipfix 35 S2C-H20L	4A	1 pole, 440VAC/60VDC 2NO	2CDS281001R0338 GZN 590043P0008 2CDS200936R0002	ABB Phoenix Contact ABB	2CDS281001R0338 3022218 2CDS200936R0002	1 1 1	3,4 3 3,4
3		-F112	Miniature circuit breaker Auxiliary contact block	S 201 P-Z 4 S2C-H20L	4A	1 pole, 440VAC/60VDC 2NO	2CDS281001R0338 2CDS200936R0002	ABB ABB	2CDS281001R0338 2CDS200936R0002	1 1	3,4 3,4
4		-F113	Miniature circuit breaker End bracket Auxiliary contact block	S 201 P-Z 4 Clipfix 35 S2C-H20L	4A	1 pole, 440VAC/60VDC 2NO	2CDS281001R0338 GZN 590043P0008 2CDS200936R0002	ABB Phoenix Contact ABB	2CDS281001R0338 3022218 2CDS200936R0002	1 1 1	3,4 3 3,4
5		-X111	Transducer terminal Terminal (PE) End bracket Cover Test socket strip Test socket strip Test socket strip Test socket strip	STME 6 STMED 6-PE Clipfix 35 D-DTME 6 PAI-4-FIX BK PAI-4-FIX BU PAI-4-FIX RD PAI-4-FIX YE	500V, 30A	0.2-6mm ² , max 2 wires, grey 0.2-6mm ² , max 2 wires, grey BK BU RD YE	1KHF405028P0038 1KHF405028P0040 GZN 590043P0008 1KHF405028P0083 1KHF405028P0165 1KHF405028P0166 1KHF405028P0167 1KHF405028P0162	Phoenix Contact Phoenix Contact Phoenix Contact Phoenix Contact Phoenix Contact Phoenix Contact Phoenix Contact Phoenix Contact	3035700 3035726 3022218 3034426 3032774 3032729 3032732 3032745	8 1 2 1 2 2 2 2	3,4 3,4 3,4 3,4 4 4 4 4



Based on 1KHL511671-A				Prepared	2016-05-13	Schnyder	Title	SAM600-VT wiring example		Doc. kind.	Parts list		Ref.Des.	=Dn	
A	Release for Documentation	2016-05-13	Schnyder	Approved	2020-05-18	Meier	Parts list		DCC EPB		+BAn.B.20				
B	Release for Documentation II	2016-06-28	Schnyder	Project	SAM600 1.2 wiring example		=Dn+BAn.B.20		Resp. dept.	PGGA-E		Rev. ind.	C	Language	en
C	Release for Documentation III	2020-05-18	Tavernier				ABB		ABB		1KHL511911		Sheet	6	
Rev.	Revision note	Date	Name							Doc. no.	1KHL511911		n. sheet	7	

=Dn
+BAn.B.20
-X111

Target Internal	
Device designation	Pin
=Dn +BAn.B.20 -F111	:1
=Dn +BAn.B.20 -D1	-X20:1
=Dn +BAn.B.20 -F112	:1
=Dn +BAn.B.20 -D1	-X20:3
=Dn +BAn.B.20 -F113	:1
=Dn +BAn.B.20 -D1	-X20:5
=Dn +BAn.B.20 -D1	-X20:8
=Dn +BAn.B.20 -D1	-X20:7



Target External		Placement in schematics	Signal
Device designation	Pin		
=Dn -BA1.1	:1a	/4.A7	UL1
=Dn -BA1.1	:1n	/4.B7	UN
=Dn -BA1.2	:1a	/4.B7	UL2
=Dn -BA1.2	:1n	/4.B7	UN
=Dn -BA1.3	:1a	/4.B7	UL3
=Dn -BA1.3	:1n	/4.C7	UN
		/4.C7	UL4
		/4.C7	UN
		/4.C7	UN

Based on 1KHL511671-A				Prepared 2016-05-13	Schnyder	Title SAM600-VT wiring example Terminal table -X111	Doc. kind. DCC EMA	Ref.Des. =Dn +BAn.B.20	
A	Release for Documentation	2016-05-13	Schnyder	Approved 2020-05-18	Meier			Resp. dept. PGGA-E	Rev. ind. C
B	Release for Documentation II	2016-06-28	Schnyder	Project SAM600 1.2 wiring example		ABB	Doc. no. 1KHL511911	Sheet 7	
C	Release for Documentation III	2020-05-18	Tavernier					n. sheet	
Rev.	Revision note	Date	Name						