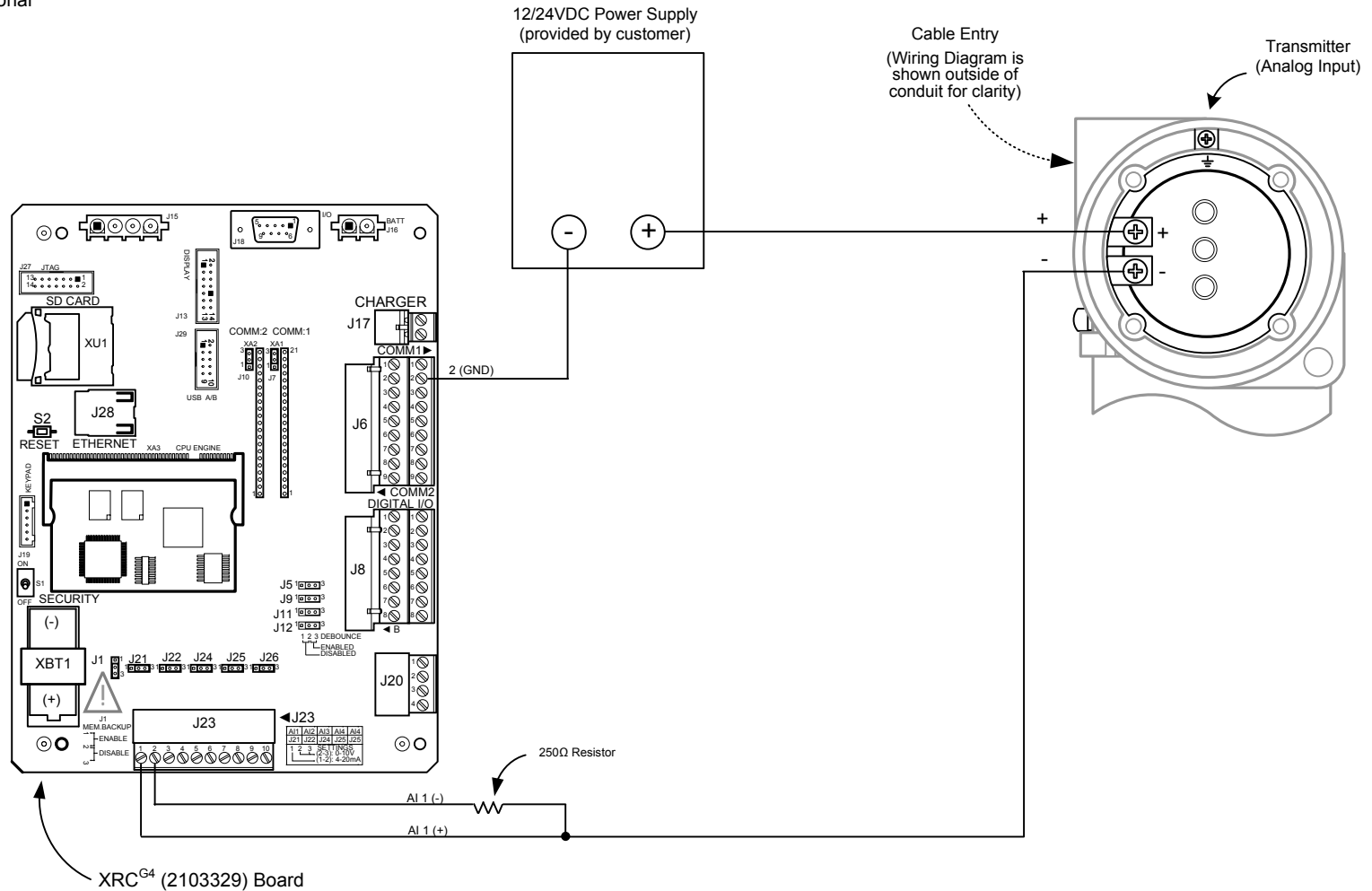


NOTES:

1. WARNING: This drawing does not illustrate the installation methods required for hazardous locations. Prior to any installation in a Classified Hazardous Location, verify installation methods by the Control Drawing referenced on the product's name tag and national and local codes.



REF: 2100247WI

<b>ABB</b>	TOTALFLOW	ACTION	DOC TYPE	TITLE	DWG NO.	REV	SHEET
	Products	L30043	UD	XRC <sup>G4</sup> (2103329 BD) AI TO 2-WIRE TRANSMITTER (ANALOG INPUT) W/EXTERNAL 12/24VDC POWER	2104337	AA	1 OF 1