

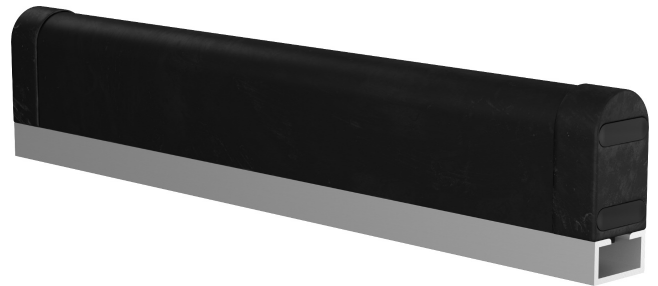
SAFETY PRODUCTS

TT-Series Safety Edge Data Sheet

Pressure sensitive safety devices are used to detect the presence of people in hazardous areas.

Safety edges are used on leading edges of doors or slow-moving machine parts to prevent crushing injuries.

A safety edge consists of a rubber profile with a cast-in contact strip that is fitted on an aluminum profile. The rubber profile is made of TPE (thermoplastic elastomer).



Easy to install

Preassembled

Safety edges are ordered in standard lengths and are delivered preassembled.

Serial connection

All devices are equipped with twin cable connection which makes it easy to connect several devices in series.



Continuous operation

Good material resistance

The safety edges are made in TPE that has a good resistance to ozone, weather and especially against chemicals.




Speed up your projects

A complete offering with few order codes

With minimum order codes we provide a compact offering that still contains a complete range of pressure sensitive devices, available in custom sizes to suit all applications.

Overtravel (mm) ^{a)}	Description	Material	Type	Order code
22.7	Safety Edge 25-45, 26" w/rail,5m cables	TPE	Safety edge TT 25-45 TPE	2TLA858009R0500
22.7	Safety Edge 25-45, 27" w/rail,5m cables	TPE	Safety edge TT 25-45 TPE	2TLA858009R0600
22.7	Safety Edge 25-45, 28" w/rail,5m cables	TPE	Safety edge TT 25-45 TPE	2TLA858009R0700
22.7	Safety Edge 25-45, 29" w/rail,5m cables	TPE	Safety edge TT 25-45 TPE	2TLA858009R0800
22.7	Safety Edge 25-45, 30" w/rail,5m cables	TPE	Safety edge TT 25-45 TPE	2TLA858009R0900
22.7	Safety Edge 25-45, 31" w/rail,5m cables	TPE	Safety edge TT 25-45 TPE	2TLA858009R1000
22.7	Safety Edge 25-45, 32" w/rail,5m cables	TPE	Safety edge TT 25-45 TPE	2TLA858009R1100
22.7	Safety Edge 25-45, 33" w/rail,5m cables	TPE	Safety edge TT 25-45 TPE	2TLA858009R1200
22.7	Safety Edge 25-45, 34" w/rail,5m cables	TPE	Safety edge TT 25-45 TPE	2TLA858009R1300
22.7	Safety Edge 25-45, 35" w/rail,5m cables	TPE	Safety edge TT 25-45 TPE	2TLA858009R1400
22.7	Safety Edge 25-45, 36" w/rail,5m cables	TPE	Safety edge TT 25-45 TPE	2TLA858009R1500
22.7	Safety Edge 25-45, 37" w/rail,5m cables	TPE	Safety edge TT 25-45 TPE	2TLA858009R1600
22.7	Safety Edge 25-45, 38" w/rail,5m cables	TPE	Safety edge TT 25-45 TPE	2TLA858009R1700
22.7	Safety Edge 25-45, 39" w/rail,5m cables	TPE	Safety edge TT 25-45 TPE	2TLA858009R1800
22.7	Safety Edge 25-45, 40" w/rail,5m cables	TPE	Safety edge TT 25-45 TPE	2TLA858009R1900
22.7	Safety Edge 25-45, 41" w/rail,5m cables	TPE	Safety edge TT 25-45 TPE	2TLA858009R2000
22.7	Safety Edge 25-45, 42" w/rail,5m cables	TPE	Safety edge TT 25-45 TPE	2TLA858009R2100
22.7	Safety Edge 25-45, 43" w/rail,5m cables	TPE	Safety edge TT 25-45 TPE	2TLA858009R2200
22.7	Safety Edge 25-45, 44" w/rail,5m cables	TPE	Safety edge TT 25-45 TPE	2TLA858009R2300
22.7	Safety Edge 25-45, 45" w/rail,5m cables	TPE	Safety edge TT 25-45 TPE	2TLA858009R2400
22.7	Safety Edge 25-45, 46" w/rail,5m cables	TPE	Safety edge TT 25-45 TPE	2TLA858009R2500
22.7	Safety Edge 25-45, 47" w/rail,5m cables	TPE	Safety edge TT 25-45 TPE	2TLA858009R2600
22.7	Safety Edge 25-45, 48" w/rail,5m cables	TPE	Safety edge TT 25-45 TPE	2TLA858009R2700

a) At 100 mm/s to 400 N

Type	TT 25-30	TT 25-45
Material	TPE	TPE
Material hardness	68 Shore A	68 Shore A
Max Delivery length	25 m	25 m
Weight	0.34 kg/m	0.44 kg/m
Enclosure	IP 65	IP 65
Switching cycles	10 000	10 000
Switching angle	2 x 45°	2 x 45°
Actuating resistance	≤ 500 Ω	≤ 500 Ω
Electrical capacity	24 V 10 mA	24 V 10 mA
Operating temperature	-10 °C to 50 °C	-10 °C to 50 °C
Max temperature range	-25 °C to 75 °C	-25 °C to 75 °C
Inactive end region	30 mm	30 mm
Finger safety	Yes, 0 °C to 50 °C	Yes, 0 °C to 50 °C
Connection cables	LIY11Y 2 x 0.34 mm	LIY11Y 2 x 0.34 mm
Cable material	PUR flat black	PUR flat black
Standard compliance and approvals		
European Directives	2006/42/EC, 2014/30/EU, 2011/65/EU, 2015/863	
Applied harmonized standards, Machinery Directive	EN ISO 13856-2:2013 EN ISO 13849-1:2015, PLd/Cat 4* EN 62061:2005+A1:2013, SIL CL 2	
* According to EN ISO 13849-2:2012, Table D.8, a fault exclusion for that the contacts in a pressure sensitive device will not close, can be made. This fault exclusion is limited up to PLd.		
Other applied standards		
Electrical safety	EN 60204-1:2006+A1:2009	
Electromagnetic compatibility	EN 61326-1:2008	
Approvals		
TÜV Nord		
		
Information for use in USA/Canada		
Intended use	Applications according to NFPA79	

Additional information can be found in the [TT Series Safety Edge Product Manual](#).

—
ABB Inc.
305 Gregson Drive
Cary, North Carolina 27511
United States
[electrification.us.abb.com/
products/machine-motor-control](http://electrification.us.abb.com/products/machine-motor-control)

—
We reserve the right to make technical changes or modify the contents of this document without prior notice. With regard to purchase orders, the agreed particulars shall prevail. ABB AG does not accept any responsibility whatsoever for potential errors or possible lack of information in this document.

—
We reserve all rights in this document and in the subject matter and illustrations contained therein. Any reproduction, disclosure to third parties or utilization of its contents – in whole or in parts – is forbidden without prior written consent of ABB AG.
Copyright© 2022 ABB
All rights reserved