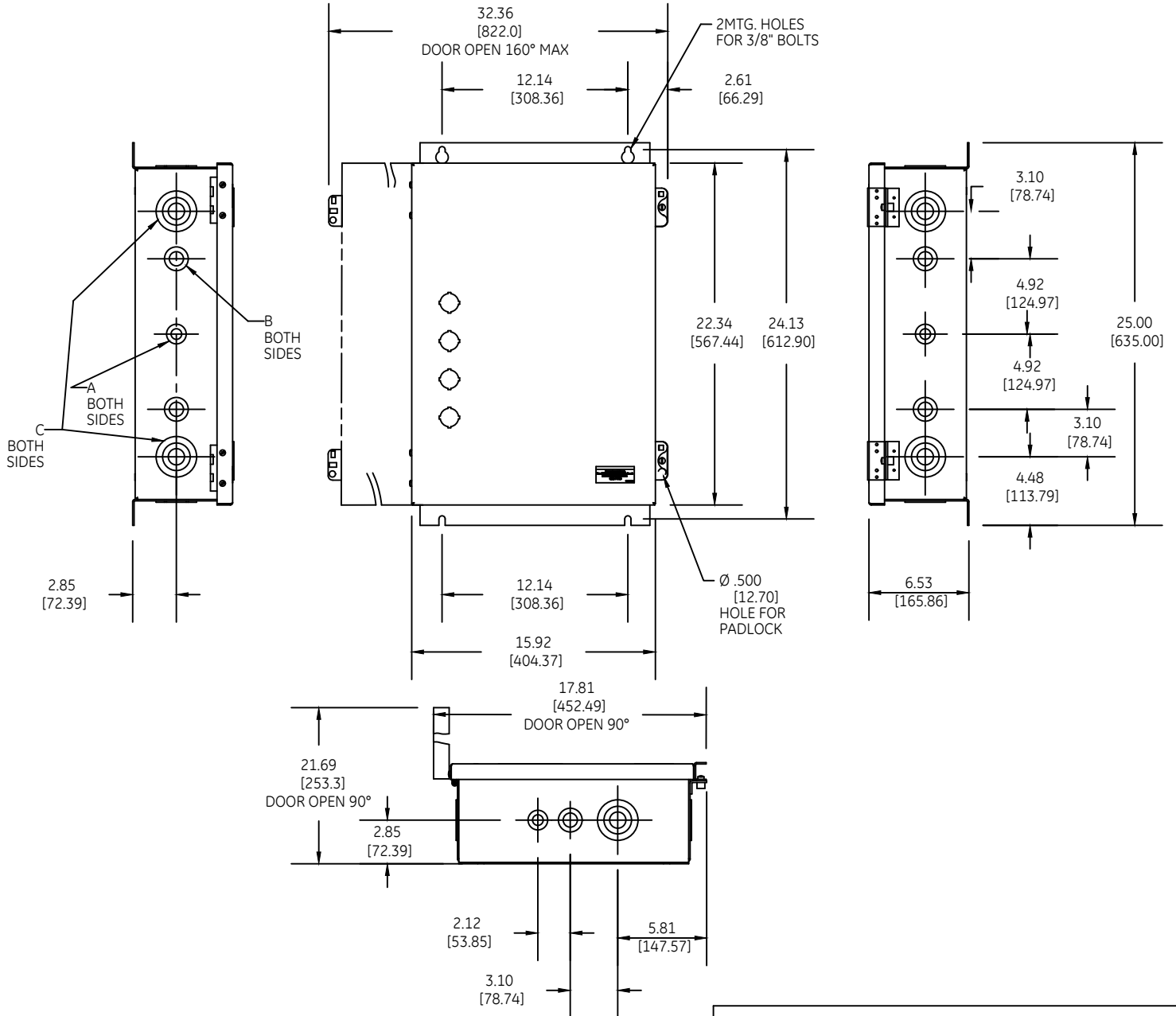
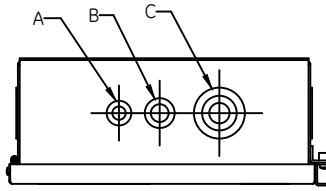


DUAL DIMENSIONS INCHES [MILLIMETERS] (ESTIMATING ONLY)

K.O.'s SAME TOP & BOTTOM



- A COMBINATION KNOCKOUT FOR 1/2 OR 3/4-INCH CONDUIT
- B COMBINATION KNOCKOUT FOR 3/4 OR 1-INCH CONDUIT
- C COMBINATION KNOCKOUT FOR 1/2, 1 1/2 OR 2-INCH CONDUIT

WEIGHT : 62 lbs (APPROXIMATE)
30, 60, 75 & 100 AMP RATINGS



ABB
OUTLINE - CR160MC
LIGHTING CONT. TYPE 1 ENCLOSED

THIRD ANGLE	SHEET#	DWG NO.	DATE	REV
	1 of 1	55-217830	03/21	03