

NOTES:

1. **WARNING:** This drawing does not completely illustrate the installation methods required for hazardous locations. Prior to any installation in a Classified Hazardous Location, verify installation methods by the Control Drawing referenced on the product's name tag and national and local codes.

Plug in modules with smooth side of the module on the left which puts pin 1 on the bottom.

RS-232 Communications Module
Totalflow P/N 2015192-001/002

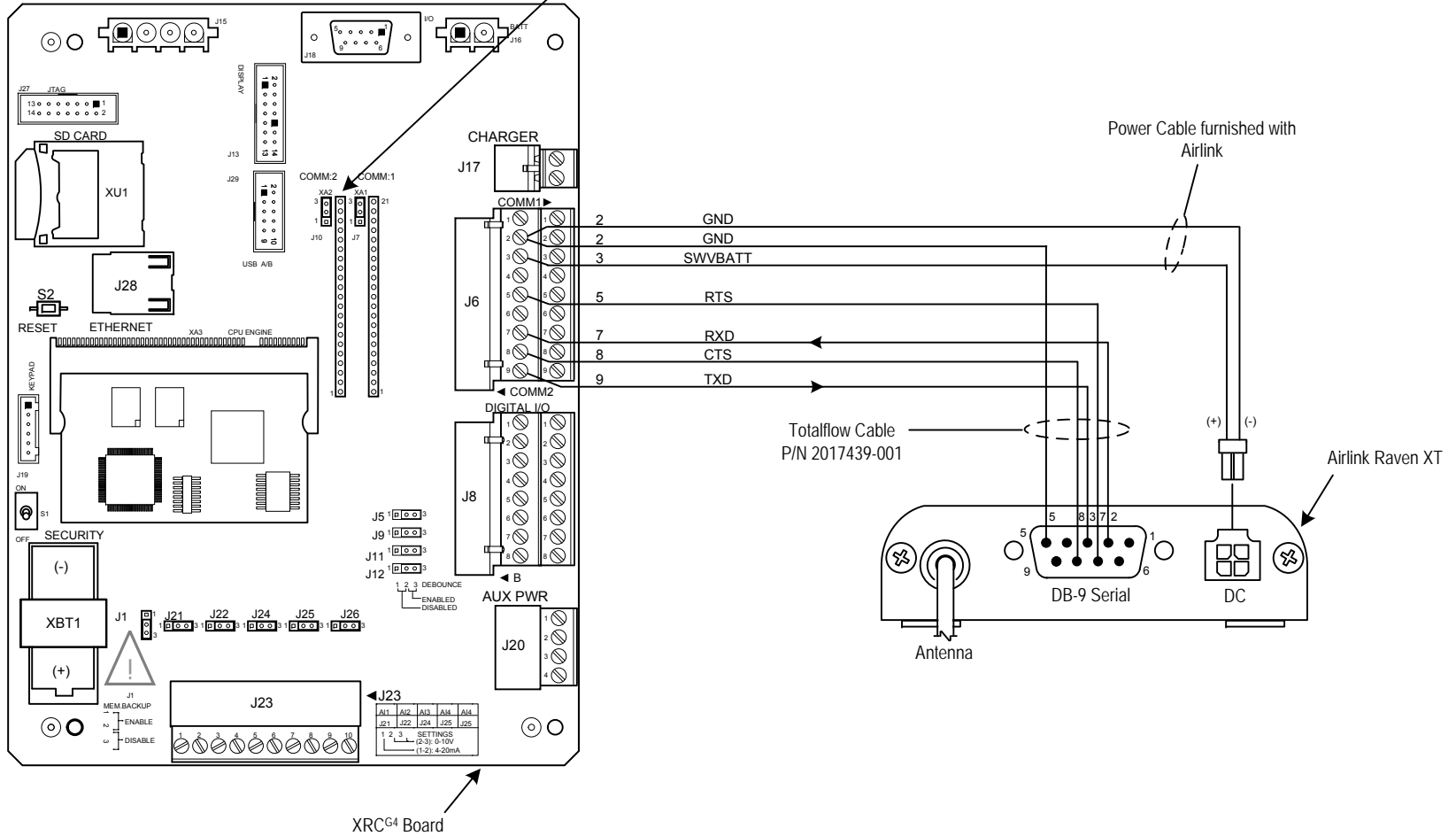


ABB	TOTALFLOW Products	ACTION	DOC TYPE	TITLE	DWG NO.	REV	SHEET
		L22051	UD	XRC ^{G4} COMM2 (2103329 BD) TO AIRLINK RAVEN XT RADIO (RS-232)	2104142	AA	1 OF 1