



ABB Robotics, April 2015

# FlexFeeder™ Overview

# FlexFeeder Agenda

- DVP
- Overview
- Key Features
- Key Data
- Communication
- Scope of Supply
- Graphical User Interface (GUI)
- Operation Panel
- Customer Value

# Overview

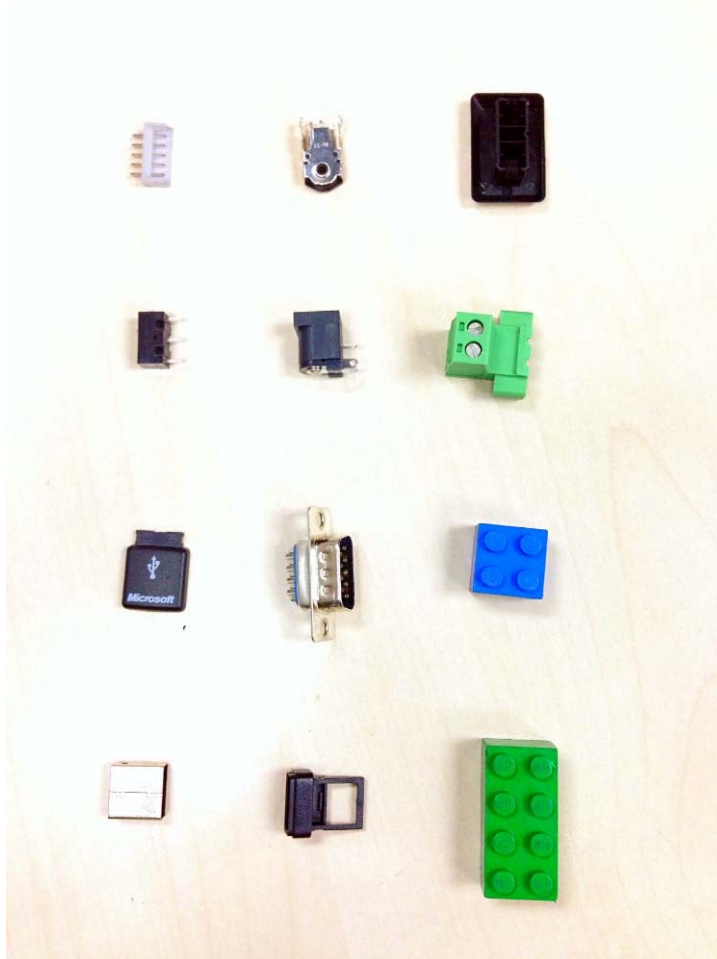
## Differentiated value proposition



- ABB's FlexFeeder – the ultimate in versatility for automated production environments. The FlexFeeder module, in combination with ABB's Integrated Vision, allows you to sort an array of components, ranging from 3 – 30 mm, without having to change the feeder each time a different component is fed into automation system.

# Target growth market

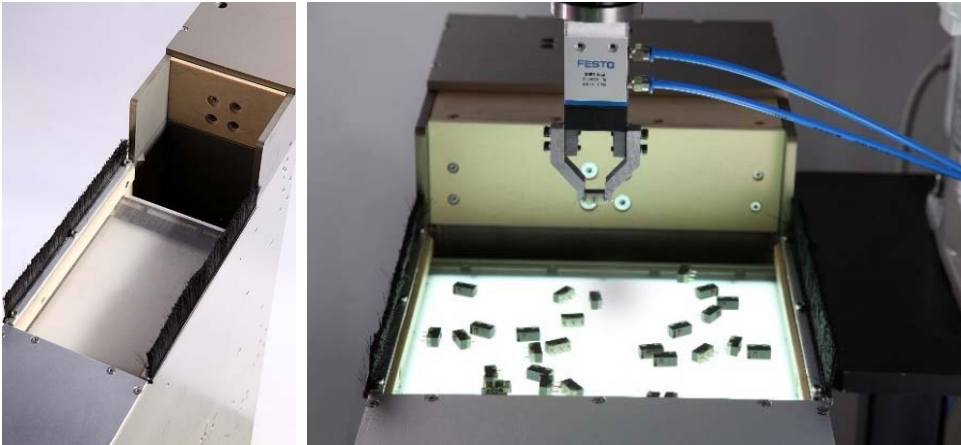
## Small parts assembly



- Market demand for sorting a wide variety of small parts, especially in 3C industry
- Aim to provide a method for generic parts feeding with compactness at a competitive price

# FlexFeeder

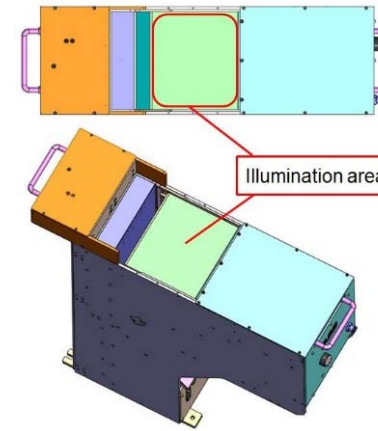
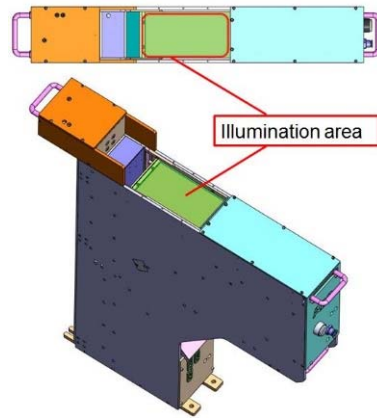
## Key features



- Flexibility in feeding small parts of various size, shape and material
- Small internal gap design to ensure reliable running
- Adjustable feeding amount
- Quick parts unload and changeover
- Easy to lift with handles
- Parts emptiness detection

# Available in two versions

## Key data



Specification	Single	Double
Weight	27 kg	40 kg
Dimension	754x737x125 mm	754x737x230 mm
Illumination area dimension	90x160 mm	200x160 mm
Air pressure (bar)	4-6 bar	4-6 bar

# FlexFeeder Communication

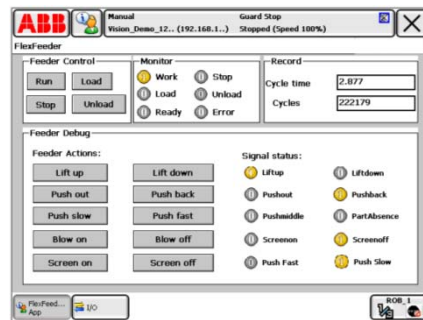


Robotware options  
617-1 FlexPendant  
Interface  
623-1 Multitasking  
616-1 PC Interface

- Work seamlessly with ABB integrated vision
- Support three communication protocols
  - EtherNet/IP
  - DeviceNet
  - Discrete I/O
- Plug & play while IRC5 compact controller configuring with required software option

# FlexFeeder

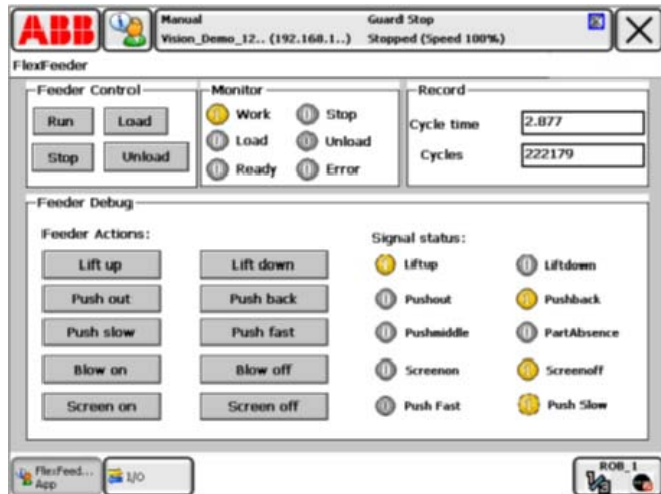
## Scope of supply



- FlexFeeder-Single
- FlexFeeder-Double
- Backlight (option)
- DeviceNet
- EtherNet/IP
- Discrete I/O
- Graphical User Interface
- Product and User manual



# FlexFeeder GUI



## Easy operation

- Run, Stop
- Load, Unload
- One click for cylinder action test

## Programming

- EIO automatically configure
- RAPID module pre-setting

## Production

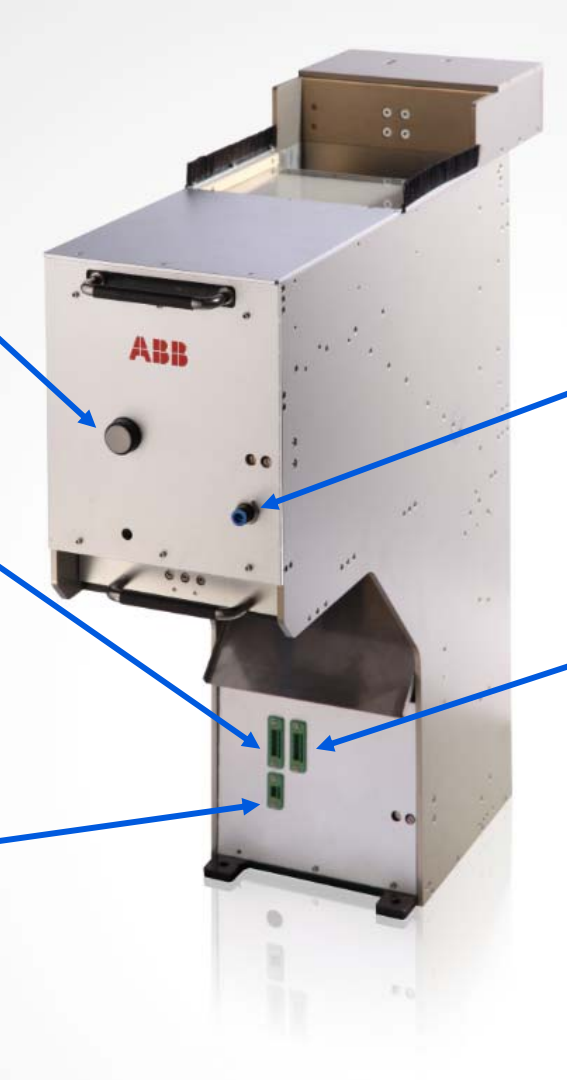
- Monitor of signals and production status
- Cycle and cycle time record

# FlexFeeder Operation panel

Power Switch

DeviceNet  
Connector

24V Power  
Supply



Air Supply Inlet

EtherNet I/P  
Connector

# FlexFeeder

## Key customer values



- Flexibility in feeding small parts of various size, shape and material
- Easy to integrate, easy to use
- Compact footprint
- Quick parts changeover
- Short cycle time
- Improve productivity and cost saving
- Two versions to be chosen

**Power and productivity  
for a better world™**

**ABB**