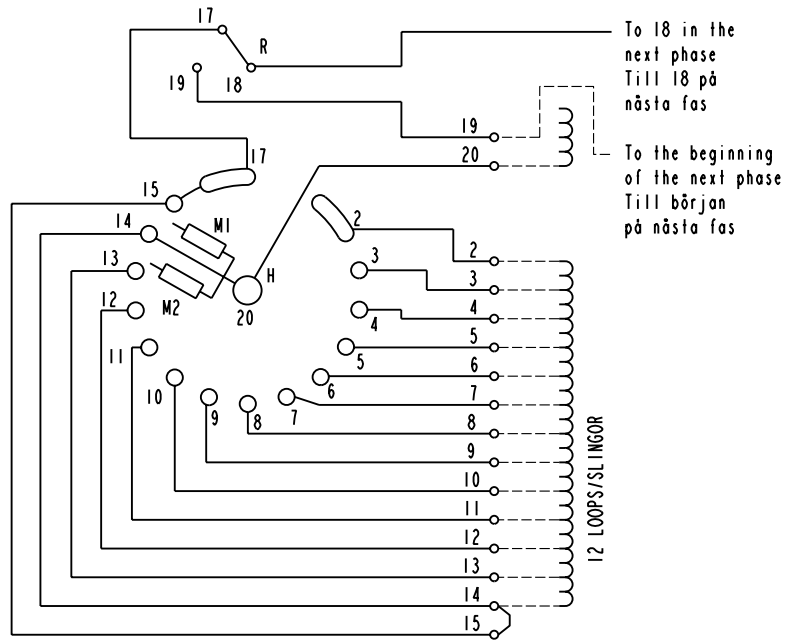


We reserve all rights in this document and in the information contained therein. Reproduction, use or disclosure to third parties without express authority is strictly forbidden. © ABB 19

Pos. Lage	R connects förbinder	H connects förbinder
1	17-18 Y	2-20
2		3-20
3		4-20
4		5-20
5		6-20
6		7-20
7		8-20
8		9-20
9		10-20
10		11-20
11		12-20
12		13-20
13		14-20
13A	17-19 D	15-20
13B		17-20
13C		
14B		
14A		2-20
14		
15		3-20
16		4-20
17		5-20
18		6-20
19		7-20
20		8-20
21		9-20
22	10-20	
23	11-20	
24	12-20	
25	13-20	
26	14-20	

On-load tap-changer type UZEYD, UZFYD, Y/D switching, 13 positions in Y and 13 positions in D. Max effective No. of turns in pos. 1 and in pos. 14. The tap-changer is delivered set in pos. 13.

Lindningskopplare typ UZEYD, UZFYD, Y/D koppling, 13 lägen i Y och 13 lägen i D. Max antal effektiva varv i läge 1 och läge 14. Lindningskopplaren levereras inställd i läge 13.



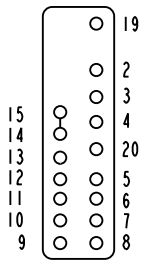
The tap-changer is shown in pos. 13  
Lindningskopplaren visad i läge 13

- R Y/D change-over selector  
Y/D-omkopplare
- H Main contact  
Huvudkontakt
- M1, M2 Transition contacts  
Motståndskontakter

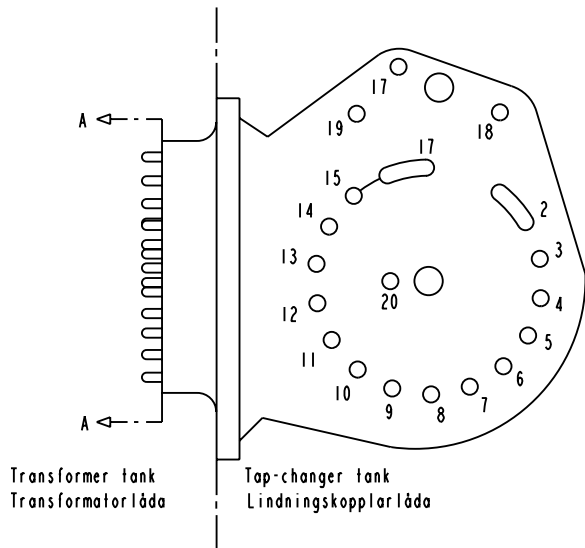
When operating from pos. 13 to 14 and from 14 to 13 the transformer must be de-energized.

Vid manöver från läge 13 till 14 och från 14 till 13 måste transformatorn vara spänningslös.

Terminal board  
Plint



Section A-A  
Sektion A-A



Sheet	Cont	Year	Week	Appd	Year	Week	Description (English)	DATA ORIGINAL
-	-	-	-	-	-	-	Accepted for prod by R. Yngvesson	CONNECTION DIAGRAM
Rev Ind	Revision	Appd	Year	Week	Description (own language)		File name	
-	-	-	-	-	KOPPLINGSSCHEMA		0399-9	
Design checked by	Design checked by	Drawn by	Issued by	Dept	Year	Week	Lang	Sheet
B-O. Stenestam	M. Hedlund	L. Bergman	COM/TKO	97	34			1
Asea Brown Boveri							5492	0399-9
Rev Ind	Cont							
-	-							