

NOTES:

1. REMOVED

REVISIONS					
REV	ACTION	DRAWN	CHECKED	APPROVED	DATE
AD	D16107	BUSHNELL	BUSHNELL	ASHER	07/21/04
AE	D16304	KASTNER	KASTNER	BUSHNELL	04/10/20
AF	D20727	KASTNER	KASTNER	BUSHNELL	07/09/04

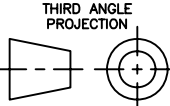
2

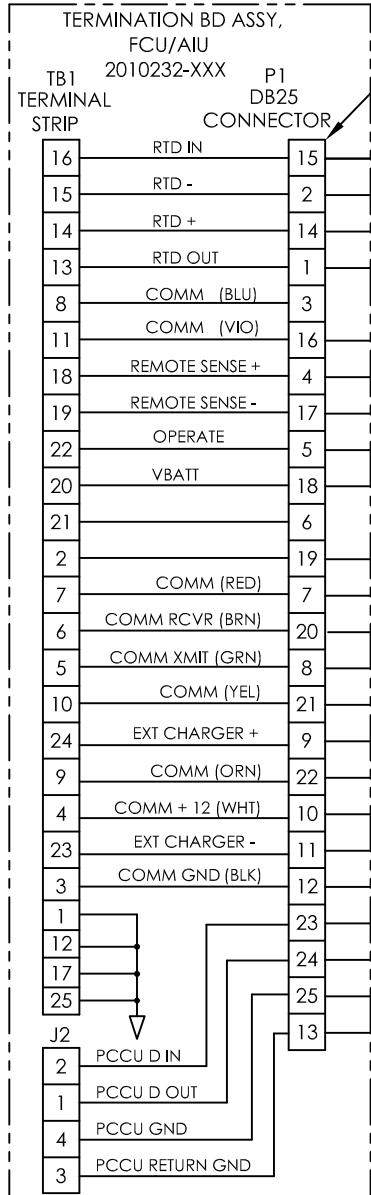
UFLO COMM TERM BD JUMPER POSITION:

DESCRIPTION	ELEK BD PART NUMBER	REFERENCE DESIGNATION	JUMPER POSITION	REMARKS	SH
RS-232 (CTS)	2100888-002	J2	2-3	W21 INSTALLED AT TB1-3. W22 NOT REQUIRED. JUMPER POSITION 2-3 IS THE DEFAULT POSITION	2
RS-232 (DCD)	2100888-002	J2	1-2	W22 INSTALLED AT TB1-3. W21 NOT REQUIRED. REPOSITION JUMPER FROM 2-3 TO 1-2	3
RS-485	2100888-001	J2	2-3	JUMPER POSITION 2-3 IS THE DEFAULT POSITION	4
RS-232 (CTS)	2101059-002	J2	2-3	W21 INSTALLED AT TB1-3. W22 NOT REQUIRED. JUMPER POSITION 2-3 IS THE DEFAULT POSITION	5
RS-232 (DCD)	2101059-002	J2	1-2	W22 INSTALLED AT TB1-3. W21 NOT REQUIRED. REPOSITION JUMPER FROM 2-3 TO 1-2	6
RS-485	2101059-001	J2	2-3	JUMPER POSITION 2-3 IS THE DEFAULT POSITION	7

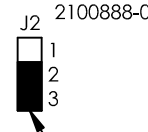
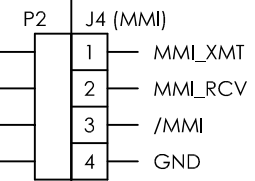
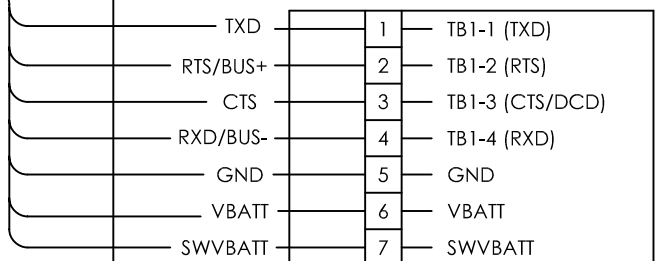
3

TO ELIMINATE ANY POTENTIAL FOR SHORTING, ALL UNUSED WIRE ENDS SHOULD BE INDIVIDUALLY INSULATED AND SECURED.

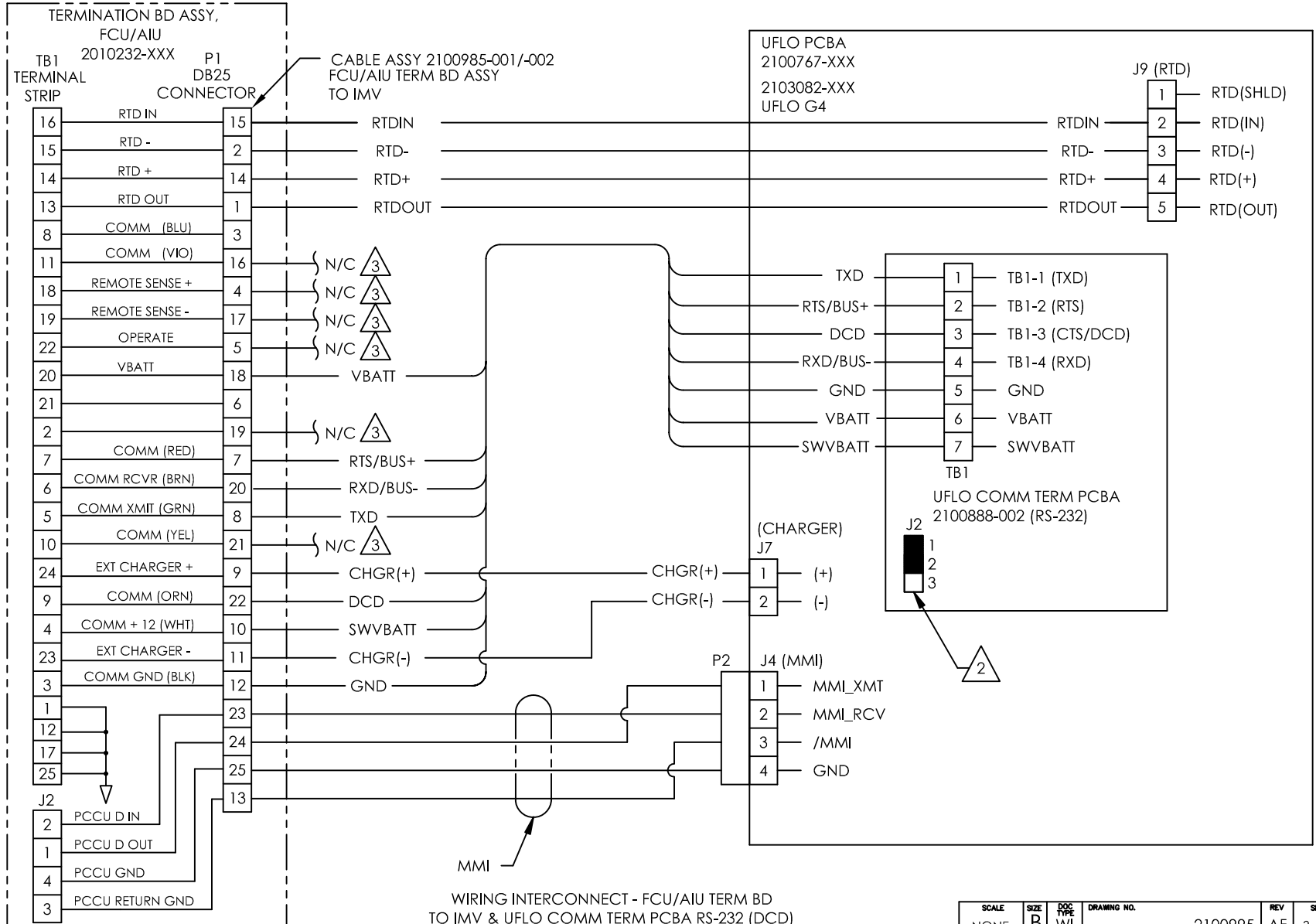
001		ITEM NO.	PART NUMBER	DESCRIPTION	REF/ZONE DESIG MATERIAL	UNIT MEAS
ASSEMBLY/QUANTITY						
DO NOT SCALE DRAWING	UNLESS OTHERWISE SPECIFIED DIMENSIONS ARE IN INCHES		PRODUCT LINE	LEVEL	TOTALFLOW®	
 <p>THIRD ANGLE PROJECTION</p>	TOLERANCES ARE:		DESIGN	DATE	ABB TOTALFLOW Products	
	DECIMAL	ANGULAR	B. ROBERTSON	03/02/03	TITLE	
	.XX ± --	± --	B. ROBERTSON	03/02/03	WIRING INTERCONNECT	
	.XXX ± --		CHECKED		WI - FCU / AIU TERM BD TO IMV & UFLO COMM TERM BD	
	BREAK ALL SHARP CORNERS AND EDGES DIMENSIONS APPLY BEFORE FINISH		APPROVED	SCALE	SIZE	DRAWING NO.
			J. BUSHNELL	NONE	B	WI
						2100995
						AF
						1 OF 7



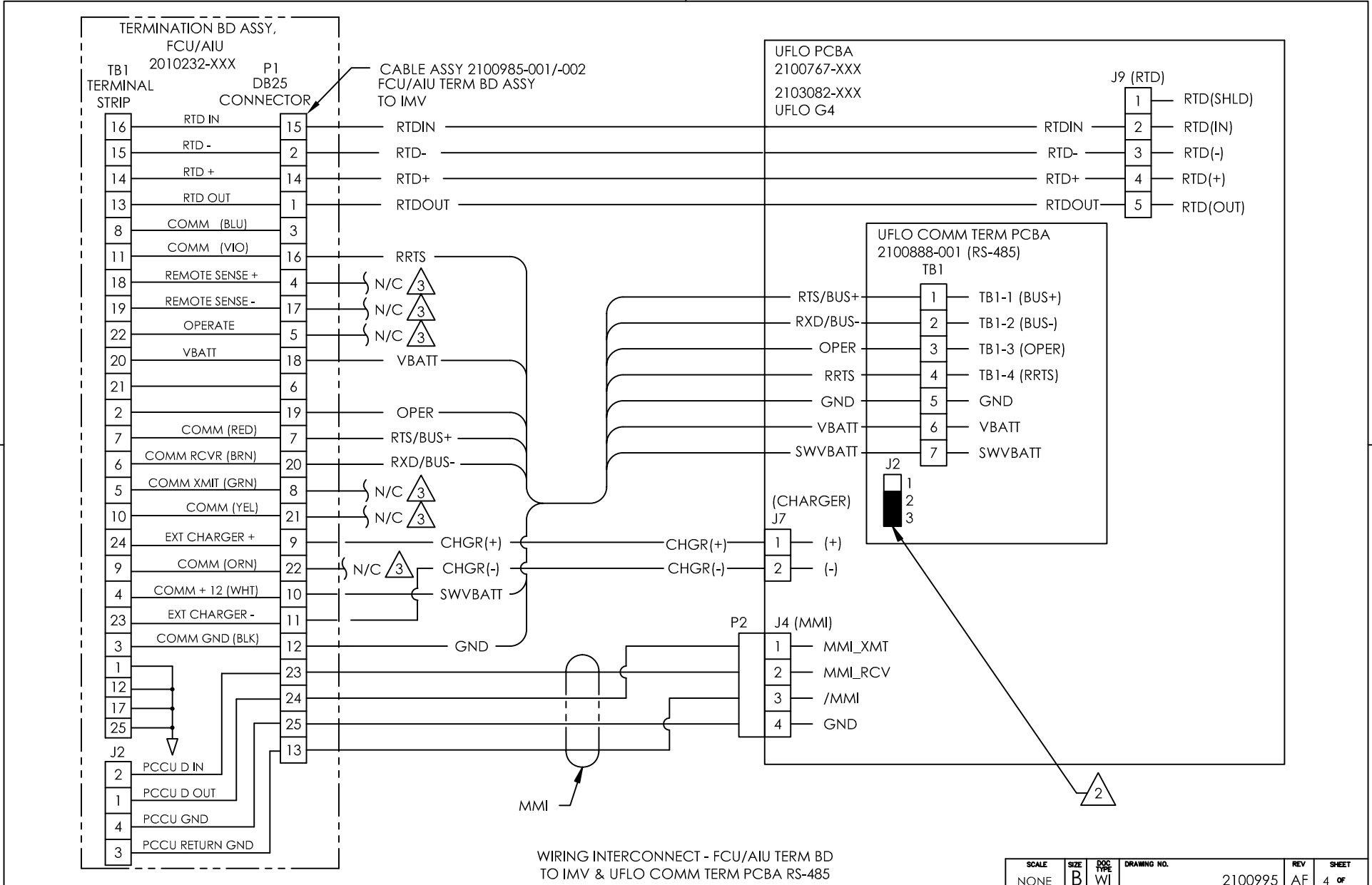
CABLE ASSY 2100985-001/-002
FCU/AIU TERM BD ASSY
TO IMV



WIRING INTERCONNECT - FCU/AIU TERM BD
TO IMV & UFLO COMM TERM PCBA RS-232 (CTS)



WIRING INTERCONNECT - FCU/AIU TERM BD TO IMV & UFLO COMM TERM PCBA RS-232 (DCD)



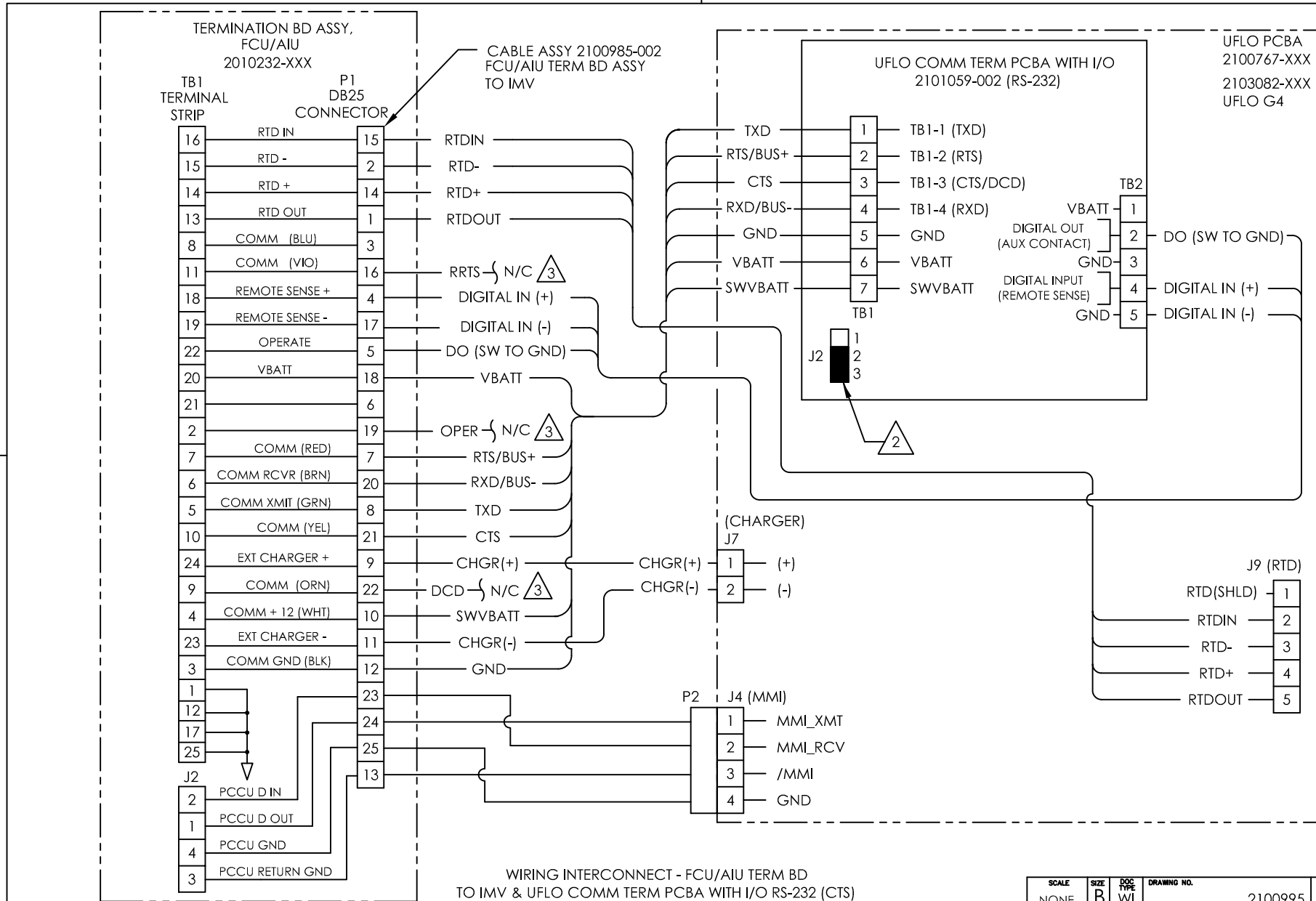
Terminal Strip	Label	Terminal Strip	Label
16	RTD IN	15	RTDIN
15	RTD -	2	RTD-
14	RTD +	14	RTD+
13	RTD OUT	1	RTDOUT
8	COMM (BLU)	3	
	COMM (VIO)	3	
11	REMOTE SENSE +	16	RRTS
18	REMOTE SENSE -	4	N/C
19	OPERATE	17	N/C
20	VBATT	5	N/C
21		18	VBATT
2		6	
7	COMM (RED)	19	OPER
6	COMM RCVR (BRN)	7	RTS/BUS+
5	COMM XMIT (GRN)	20	RXD/BUS-
10	COMM (YEL)	8	N/C
24	EXT CHARGER +	21	N/C
9	COMM (ORN)	22	N/C
4	COMM + 12 (WHT)	10	CHGR(+)
23	EXT CHARGER -	11	CHGR(-)
3	COMM GND (BLK)	12	SWVBATT
1		12	GND
12		23	
17		24	
25		25	
J2		13	
2	PCCU D IN		
1	PCCU D OUT		
4	PCCU GND		
3	PCCU RETURN GND		

J9 (RTD)	Label
1	RTD(SHLD)
2	RTD(IN)
3	RTD(-)
4	RTD(+)
5	RTD(OUT)

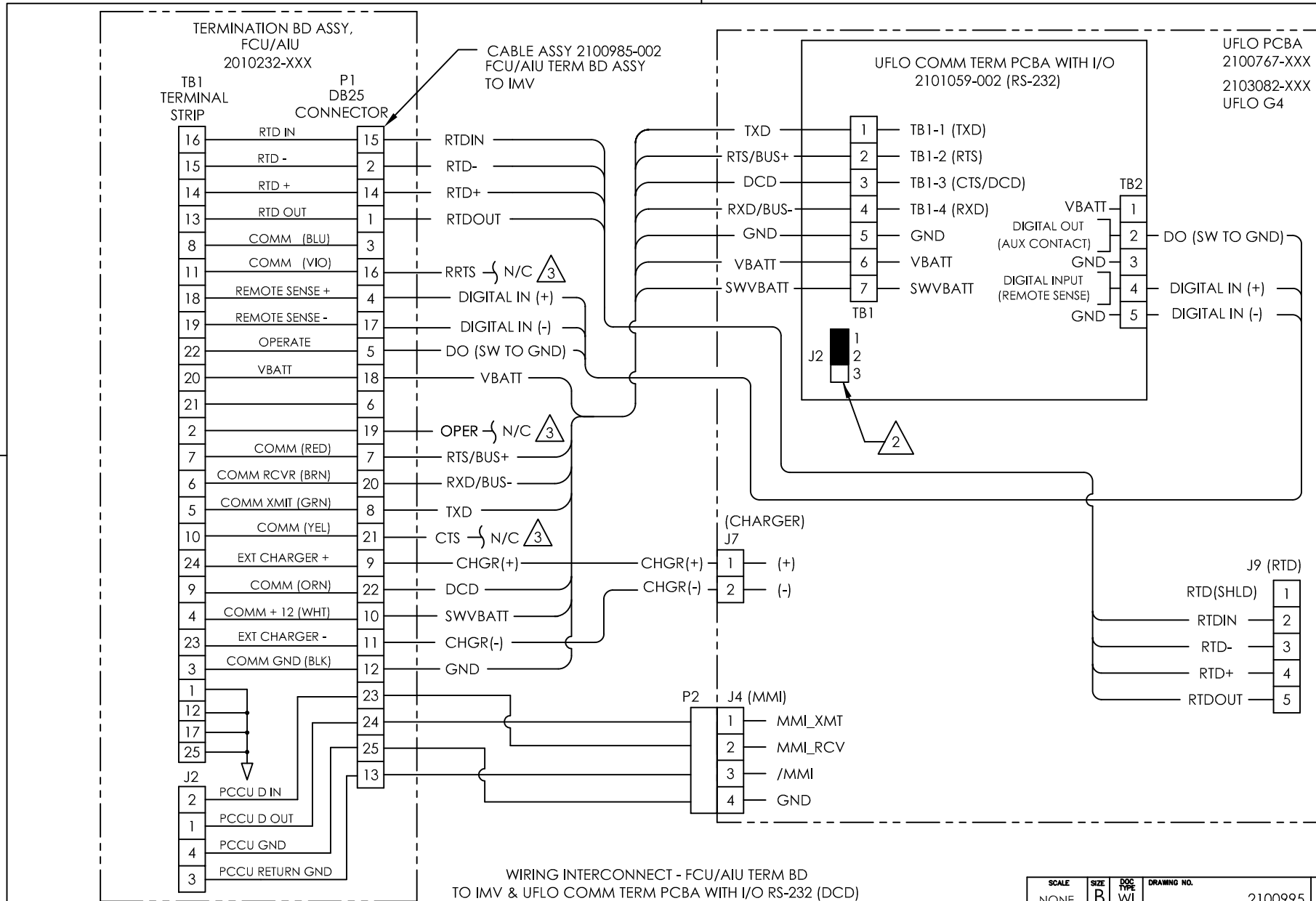
UFLO COMM TERM PCBA TB1	Label
1	TB1-1 (BUS+)
2	TB1-2 (BUS-)
3	TB1-3 (OPER)
4	TB1-4 (RRTS)
5	GND
6	VBATT
7	SWVBATT

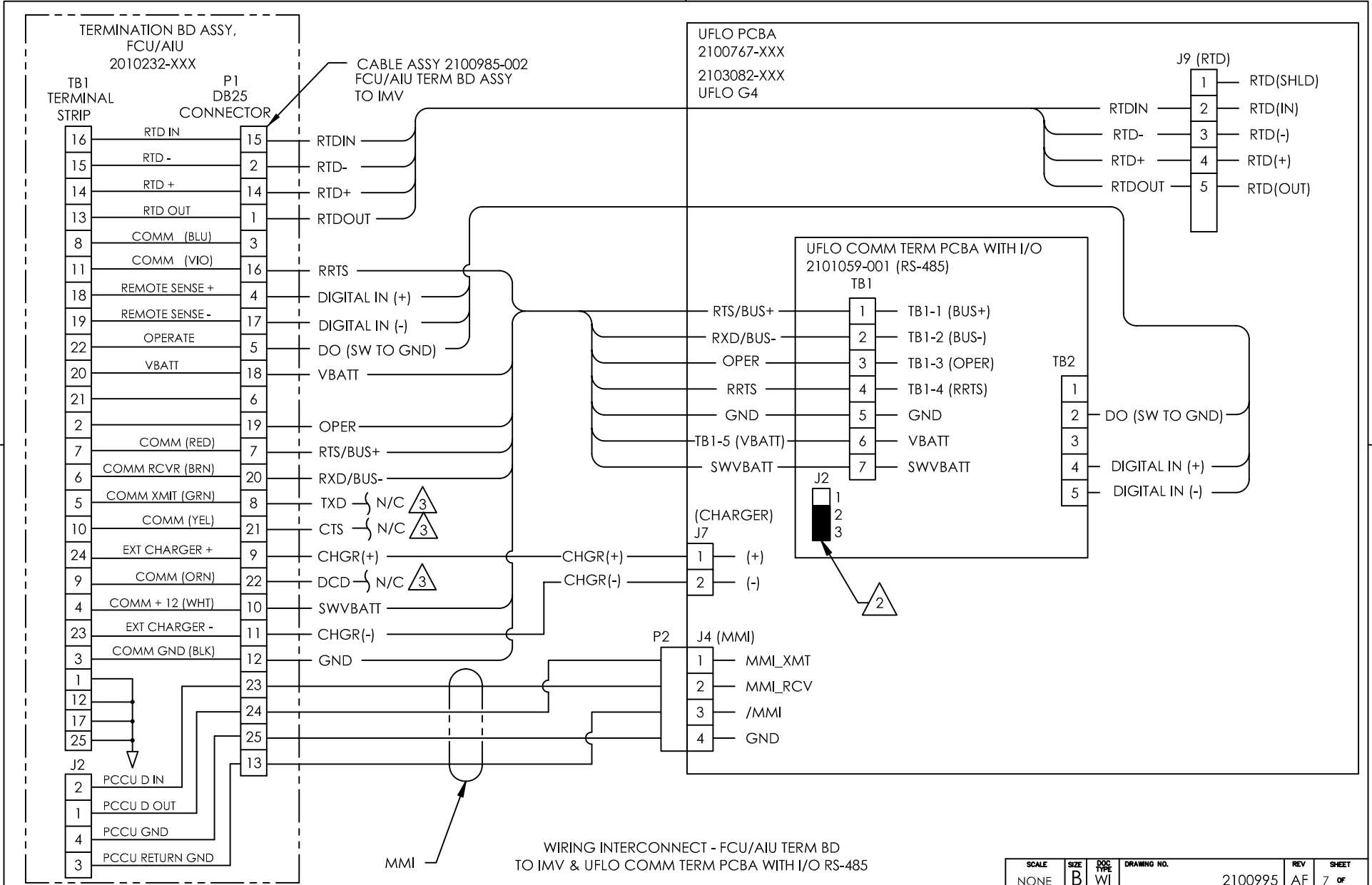
J7 (CHARGER)	Label
1	(+)
2	(-)

J4 (MMI)	Label
1	MMI_XMT
2	MMI_RCV
3	/MMI
4	GND



WIRING INTERCONNECT - FCU/AIU TERM BD TO IMV & UFLO COMM TERM PCBA WITH I/O RS-232 (CTS)





SCALE	SIZE	DOC TYPE	DRAWING NO.	REV	SHEET
NONE	B	WI	2100995	AF	7 OF