
APPLICATION NOTE

HOW TO UPDATE BSP VERSION ON A CP600 HMI CP600-ECO, CP600 2ND GENERATION, CP600-PRO



Contents

1	Introduction	3
1.1	Scope of the document	3
1.2	Compatibility	3
1.3	Overview CP600 HMIs	3
2	Update BSP version	4
2.1	Automatically	4
2.2	Manually	5
2.2.1	Prepare for direct update on the panel	5
2.2.2	Prepare for remote update via a web browser	5
2.2.3	Update	5

1 Introduction

1.1 Scope of the document

This document describes how to update the BSP (Boot Support Package) of a CP600-eCo, CP600 2nd generation and CP600-Pro HMI. To improve security and add further functionalities, it's recommended to use the latest BSP version.

1.2 Compatibility

The application notes in this document have been used with the below hardware.

CP600-eCo	CP600-2 nd Gen	CP600-Pro
CP604	CP6407	CP6605
CP604-B	CP64010	CP6607
CP607	CP6415	CP6610
CP607-B		CP6615
CP610		CP6621
CP610-B		

1.3 Overview CP600 HMIs



2 Update BSP version

The system components of the CP600 devices can be updated locally using an USB memory key with automatic update process or manually be updated. In both cases, be sure that your USB memory key has **FAT** or **FAT32 format**.

In additions it is possible to update the BSP version remotely via web.

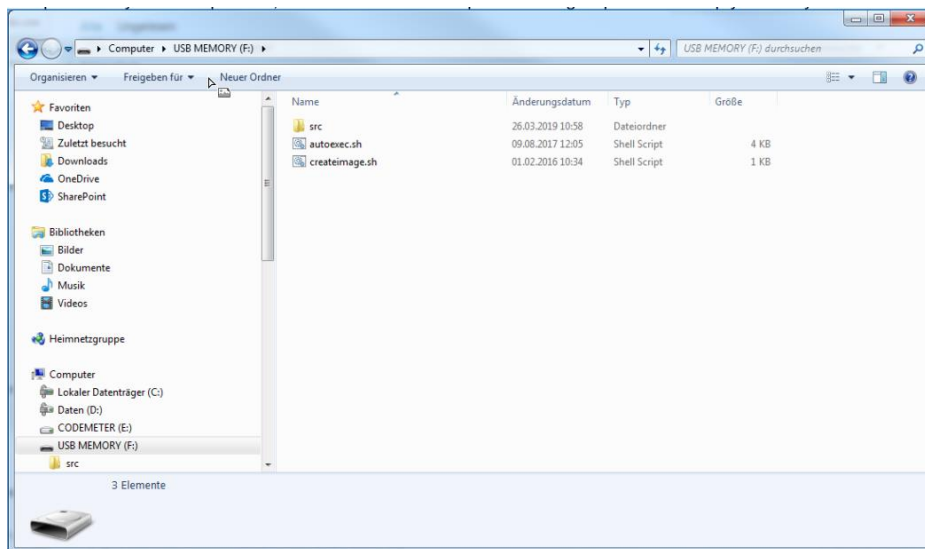
Important:

Do not turn off the device while a system component is being upgraded.

CAUTION: Working in the Management area of the panel is a critical operation and, when not performed correctly, may cause product damages requiring service of the product. Contact technical support for assistance.

2.1 Automatically

1. To update all system components, extract the Automatic Update Package zip file directly on an empty USB key. (It ´s not enough to copy the already extracted folder to the USB key.)



2. Power off the CP600 panel
3. Plug the USB memory key with the copied files into the USB slot on the panel
4. Power on the CP600 panel and wait until the update progress is completed
5. At the end of the component update, unplug the USB memory key and restart HMI

2.2 Manually

The update can be done directly on the panel using an USB key, or remotely using a web browser on a PC which has connection to the panel.

2.2.1 Prepare for direct update on the panel

- Copy the extracted folder of the provided BSP update to an empty USB key and insert into the panel.
- Start the panel with tap-tap procedure: tapping on the panel while it is powered up. The detection of tap-tap mode will be indicated.

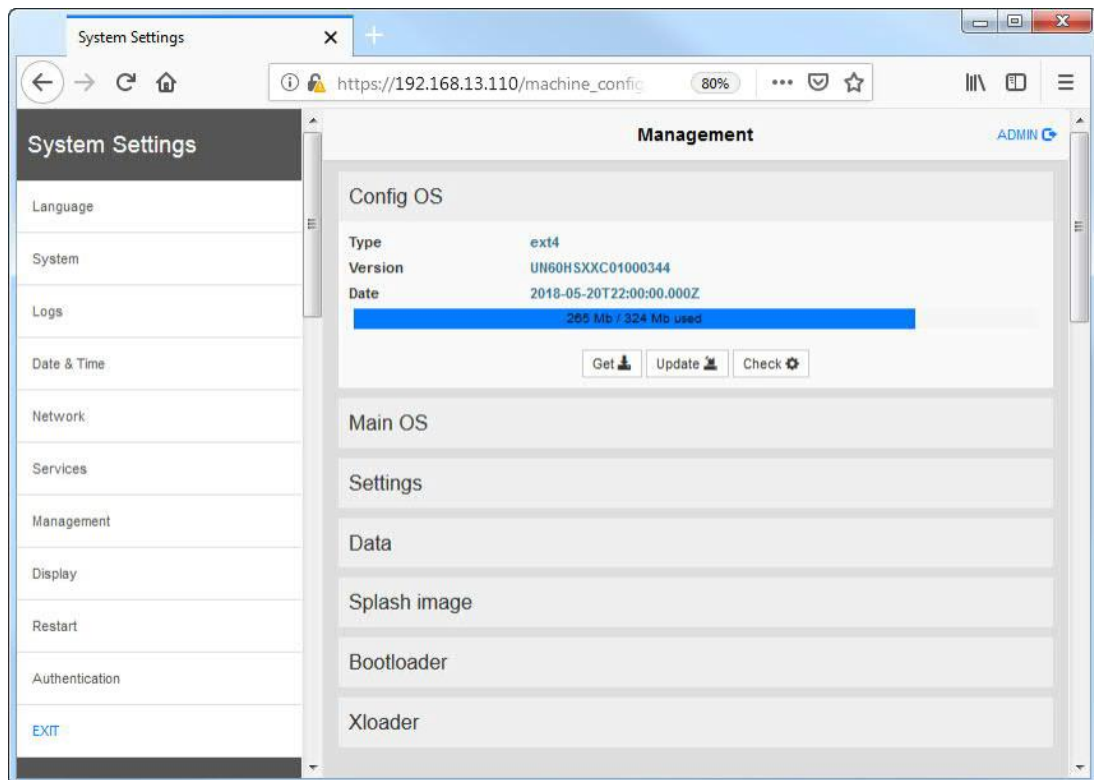
2.2.2 Prepare for remote update via a web browser

- Open a web browser with the following URL and adapt your IP address of the HMI. E.g. **https://<HMI-IP_address>/machine_config**
- Acknowledge the warning that the connection is not private/secure.
- Click the “Advanced” button or “Go on to webpage” or similar
- Click the unsafe link to “proceed to <HMI-IP_address> (unsafe)”
- Login with the actual administrator password.
The default username is “admin”, default password is “admin”.

2.2.3 Update

1. Enter “System Settings”
2. Choose “Management” section in the left menu.

The version in this screenshot can be different. It depends on your HMI type and version



1. Expand the **Config OS** component to update and select **[Update]**.
2. On the opened dialog, click **[Browse Image]**, then browse to and select the “xxx-configos-xxx.tar.gz” file.
Click OK
3. Only for remote update:
Click on **[Browse MD5]** and select the “xxx-configos-xxx.tar.gz.md5” file.
4. Click **[Proceed]** to continue and wait for the upgrade to be completed.

5. After that, expand the **Main OS** component to update and select **[Update]**.
6. On the opened dialog, click **[Browse Image]**, then browse to and select the “xxx-mainos-xxx.tar.gz” file
7. Only for remote update:
Click on **[Browse MD5]** and select the “xxx-mainos-xxx.tar.gz.md5” file.
8. Click **[Proceed]** to continue and wait for the upgrade to be completed.

9. This step is optional, proceed only if Bootloader file is provided.
Expand the **Bootloader** component to update and select **[Update]**.
10. On the opened dialog, click **[Browse Image]**, then browse to and select the “xxx-bootloader-xxx.img” file.
11. Only for remote update:
Click on **[Browse MD5]** and select the “xxx-bootloader-xxx.img.md5” file.
12. Click **[Proceed]** to continue and wait for the upgrade to be completed.

13. At the end of the component update, take out the USB-key and **restart HMI** and leave it starting normally.



ABB Automation Products GmbH
Eppelheimer Straße 82
69123 Heidelberg, Germany
Phone: +49 62 21 701 1444
Fax: +49 62 21 701 1382
E-Mail: plc.support@de.abb.com
www.abb.com/plc

We reserve the right to make technical changes or modify the contents of this document without prior notice. With regard to purchase orders, the agreed particulars shall prevail. ABB AG does not accept any responsibility whatsoever for potential errors or possible lack of information in this document.

We reserve all rights in this document and in the subject matter and illustrations contained therein. Any reproduction, disclosure to third parties or utilization of its contents – in whole or in parts – is forbidden without prior written consent of ABB AG.
Copyright© 2021 ABB. All rights reserved