



TOTALFLOW

Technical Bulletin 165

# **WinCCU 5.x and 6.x Long Term Data Potentially being overwritten by Archive Data**

Totalflow Technical Bulletin  
Version 1.0 Revision AC (5-1-2009)

ABB Inc.  
TOTALFLOW Products  
7051 Industrial Blvd.  
Bartlesville, OK 74006  
(918) 338-4888 phone  
(918) 338-4699 fax  
(800) 442-3097  
[www.abb.com/totalflow](http://www.abb.com/totalflow)



## 1 Introduction

To describe a potential loss of WinCCU long term database edits that can occur with both Access and SQL databases. This bulletin **only pertains** to those utilizing WinCCU's editor to modify collected Flow Computer historical flow information from the Long Term database (LTDB). This bulletin **does not** pertain to those collecting historical data (archive) with WinCCU and then editing using a third party editor.

## 2 Description

Recently Totalflow discovered a potential issue concerning edited WinCCU data. There is a potential that edited information may at some point be overwritten by newly collected (un-edited) archive information. The issue has been identified as an un-initialized variable on both WinCCU 5.x and 6.x releases. The issue has been found when using both Access and SQL databases.

Our investigation of one customer system indicated this issue occurred (point).25% of the time. The maximum amount of data that can be overwritten is equal to the size of the archive file. The system's archive file capacity is programmable within WinCCU but defaults to 100 days. View system setup to determine the archive file capacity (Fig. 1).

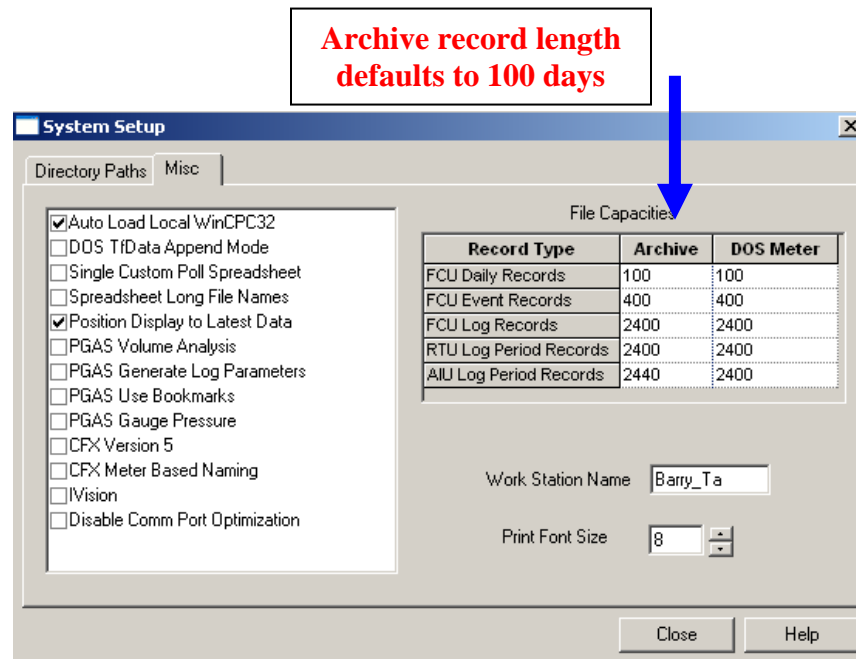


Fig. 1

### 3 Conclusion

#### Temporary Workaround:

A customer can reduce the exposure of overwritten long term database information by reducing the archive file size to 35 days instead of the default 100 days (see WinCCU setup table above).

#### Correction Steps:

Totalflow has released new versions of WinCCU 6.08 and 5.29 that will correct this un-initialized variable issue. The plan is to release WinCCU 6.08 first and WinCCU 5.29 second. Totalflow has posted both releases on our ftp site at the following site:

[ftp.totalflowsupport.com](ftp://totalflowsupport.com)

Once you have arrived at our FTP site above, go to the customer service folder and select the appropriate version 6.08 or 5.29 and download the release. You will need your original software license key when installing the new version.