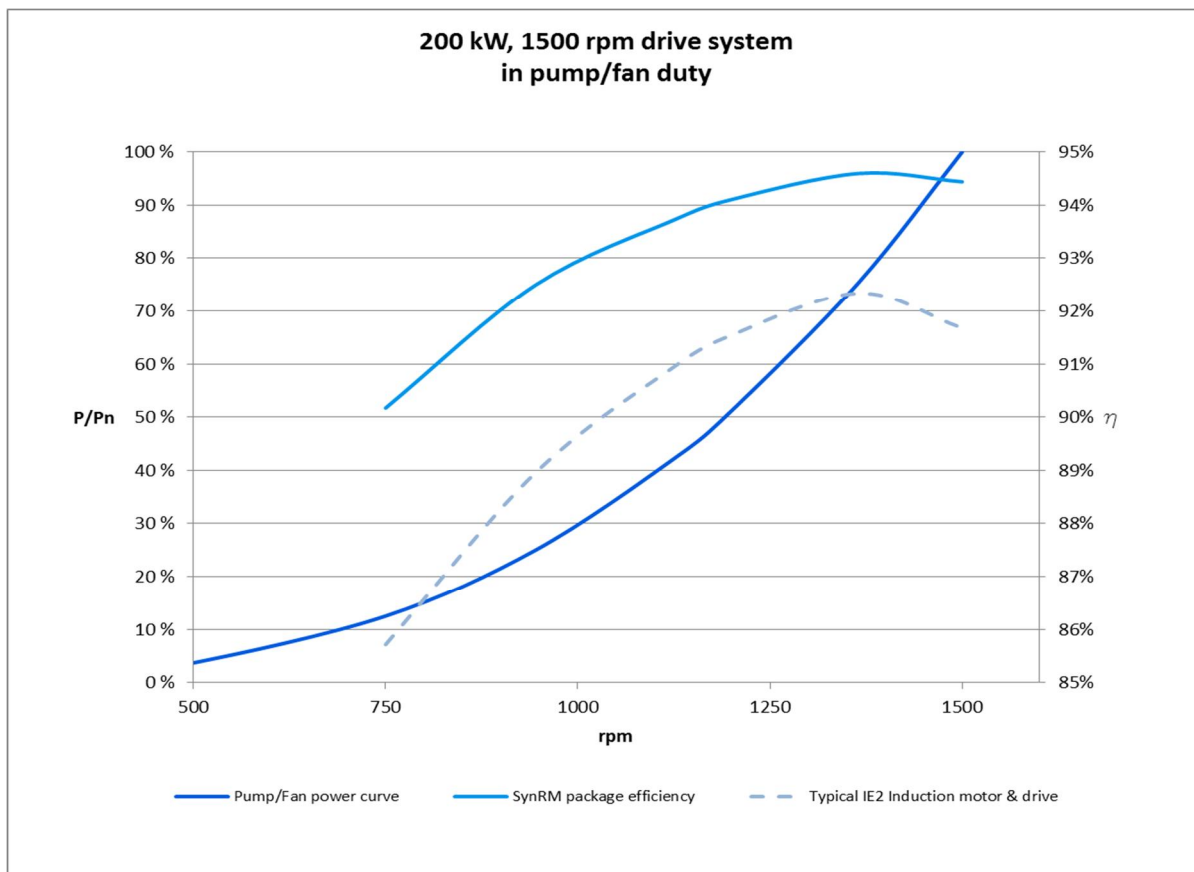


Manufacturer's statement

ACS880-01 and IE4 SynRM motor package efficiency

Drive: ACS880-01-427A-3

Motor: M3BL 315MLA, 3GBL312413-ADC, P_n 200 kW, 1500 rpm



Speed	Speed rpm	P/P _n	Package efficiency
50%**	750	13%**	90.2%
63%	945	25%	92.5%
75%	1125	42%	93.7%
80%	1200	51%	94.1%
91%	1365	75%	94.6%
100%**	1500	100%**	94.4%*

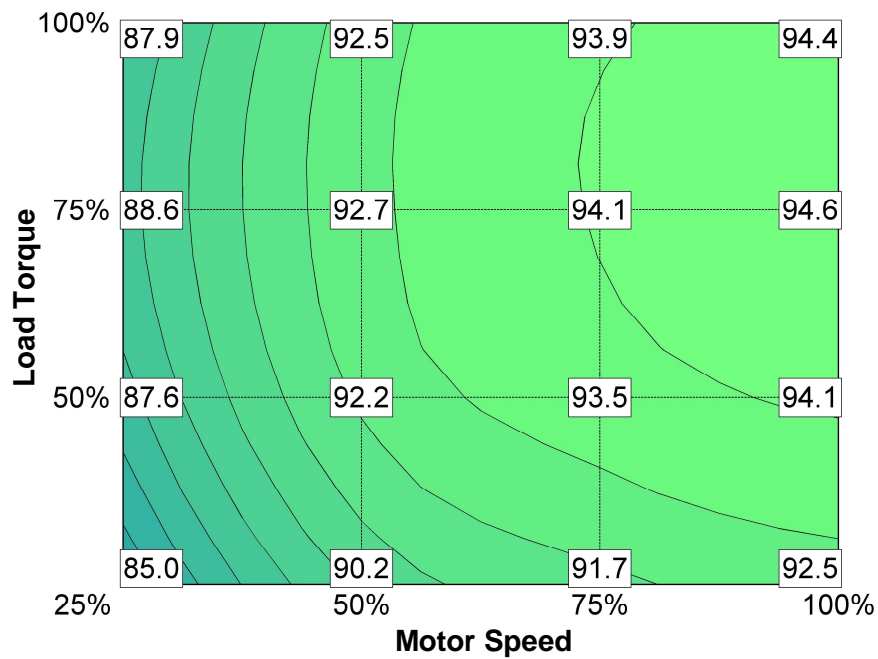
*Estimated tolerance according to IEC 60034-1:

≤150kW: 0.15 x (100 - package efficiency (%)) at the nominal point

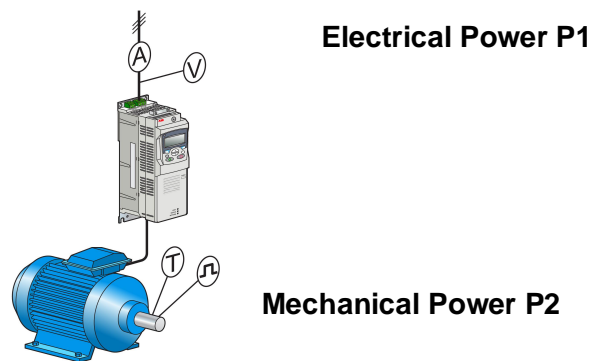
>150kW: 0.10 x (100 - package efficiency (%)) at the nominal point

**Measurement points according to EN 50598-2

Package efficiency [%] for applications with other load characteristics:



Points of measurement



Efficiency $\eta = P2/P1$

Efficiency measurements were made at:

X	ABB verification laboratory, Vaasa		ABB verification laboratory, Västerås
	ABB verification laboratory, Helsinki		