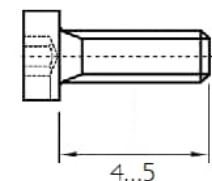
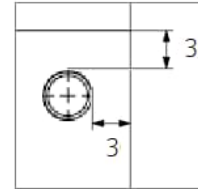
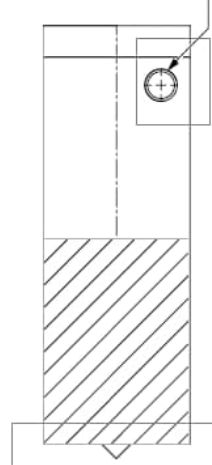
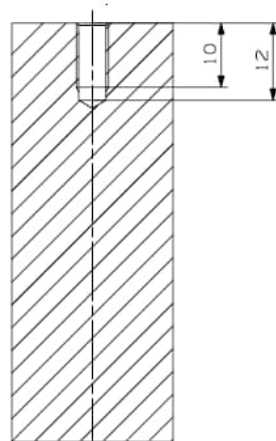
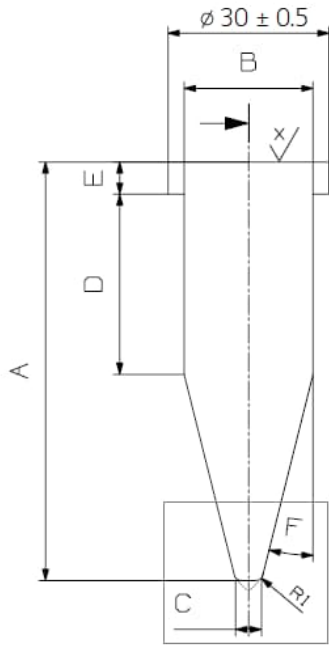


Article code	IEC Frame	Nema Frame	A	B	C	D	E	F
3AFP9251552 (W4)		140-210	25	10	3	10	5	12°
3AFP9234761 (W1)	160-250	250-360	42	10	4	10	5	6°
		400-449	32	16	5	10	5	16°
3AFP9251550 (W2)	280-355		65	15	3	28	5	10°
3AFP9251551 (W3)	400-450		65	20	4	28	5	14°

M3 screw must be screwed in place with approx. 1 Nm of torque

M3 TAP DEPTH 5

Hexagonal socket M3 screw



NOTE:
 US Surface finish
 X = 125
 Z = 500
 Unspecified surfaces 250

NOTE:
 FIN Surface finish
 X = 3,2
 Z = 12,5
 Unspecified surfaces 6,3

MACH. TOLERANCE UNLESS SPEC
 2 PLC DECIMALS = ±0.020
 3 PLC DECIMALS = ±0.005
 ANGLE TOL. = ±0,5°
 UNSPECIFIED RADII = R.015

Rev	Change	Date	Prep.	Approved
Prepared	Responsible dept.	Title		SCALE
Approved	Take over dept.	Sensor receiver		1:1
Material		Code		
AT51 304				
Supersedes	Superseded by	Type		A2
ABB Oy, Motors and generators			Document No.	Revision
			B	A
			Subversion	SCALE
				1:1