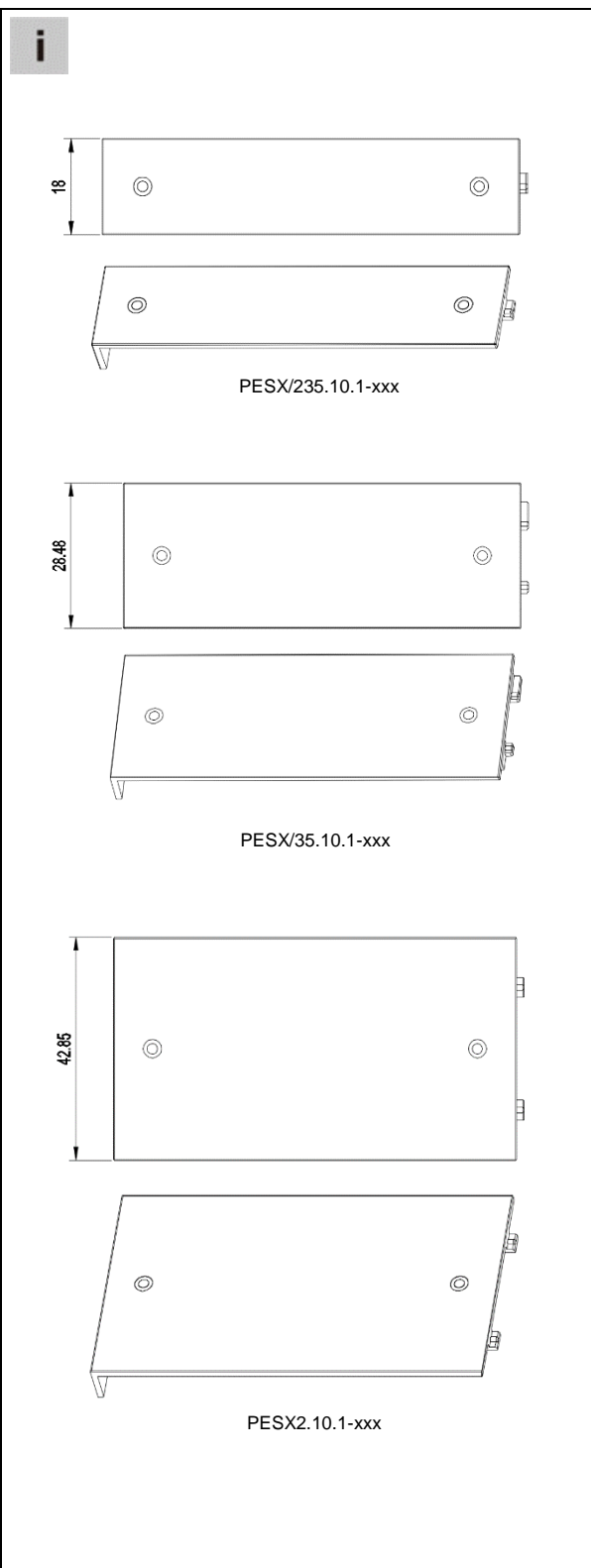
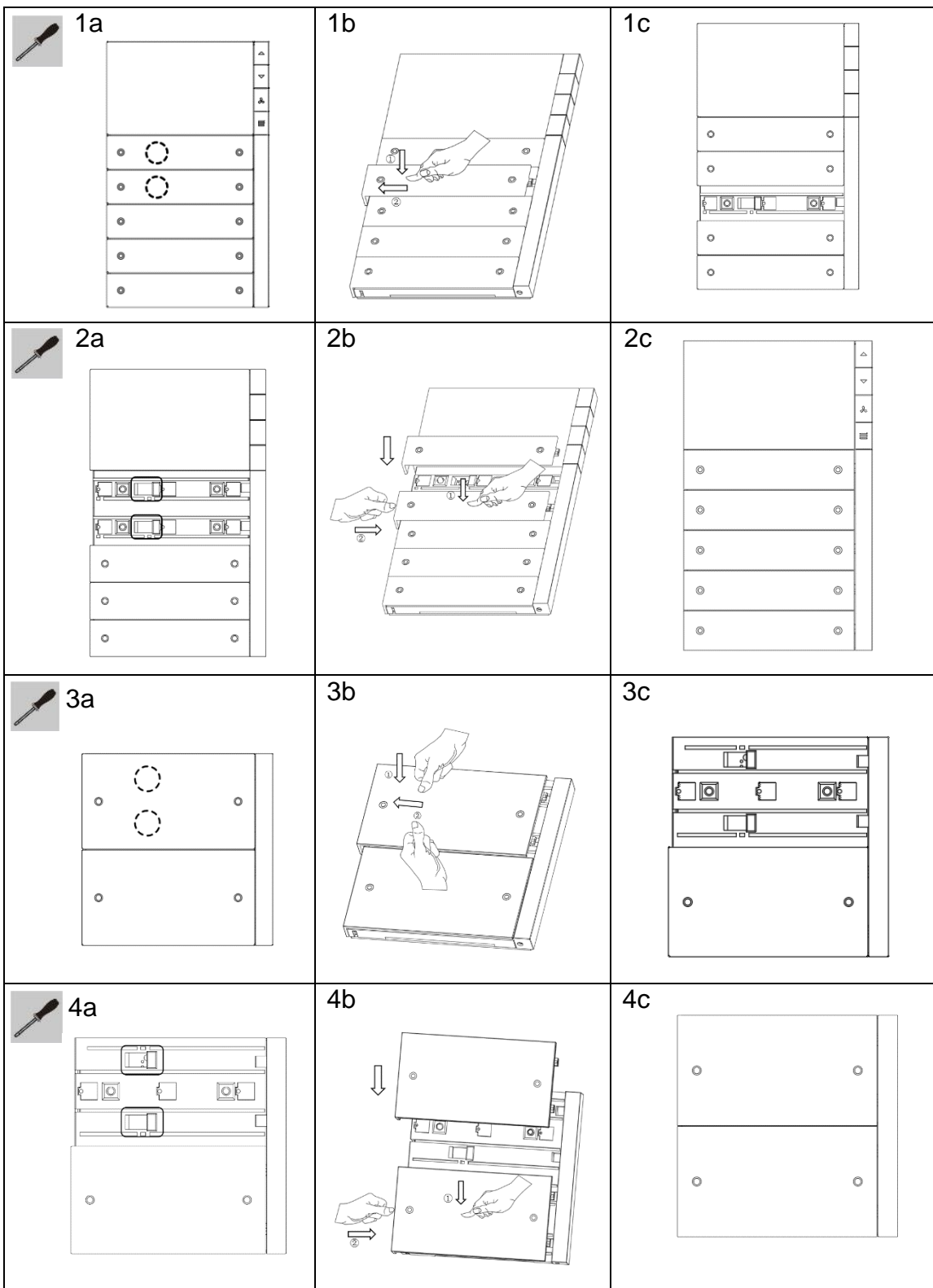




PEONIA Replaceable rocker without symbol
 PESX/2.10.1-xxx
 PESX/35.10.1-xxx
 PESX/235.10.1-xxx

PEONIA Replaceable rocker with symbol
 PESB/2.10.1-xxx
 PESB/35.10.1-xxx
 PESB/235.10.1-xxx
 PESD/2.10.1-xxx
 PESD/35.10.1-xxx
 PESD/235.10.1-xxx
 PESJ/2.10.1-xxx
 PESJ/35.10.1-xxx
 PESJ/235.10.1-xxx
 PESR/2.10.1-xxx
 PESR/35.10.1-xxx
 PESR/235.10.1-xxx
 PESF/2.10.1-xxx
 PESF/35.10.1-xxx
 PESF/235.10.1-xxx
 PESZ/2.10.1-xxx
 PESZ/35.10.1-xxx
 PESZ/235.10.1-xxx



PEONIA 系列智能控制面板按键(带图标/不带图标)

警告
 直接或间接接触导电零件时，可能有触电危险。可能造成电击、灼伤或死亡。
 请勿暴力安装和拆卸按键！
 仅可由专业人员在 230V 电网上进行作业。

请仔细阅读并妥善保管安装说明。
 更多用户信息和参数及调试信息查询 www.abb.com/knx。

预期用途
 选用不同颜色的按键来融入不同的装修风格及设计理念，可选用带有图标的按键用于简单的功能识别。

ABB i-bus®KNX Sensor
 可替换式按键（带图标/不带图标）适用于 PEONIA 系列智能控制面板，2 联/4 键，3 联/6 键，5 联/10 键。

i 产品说明
 PEONIA 系列智能控制面板按键，分为窄边按键、中等按键、宽边按键三种；其中窄边按键、中等按键拆卸和安装方式遵循以上 1a, 1b, 1c, 2a, 2b, 2c 操作说明；宽边按键拆卸和安装方式遵循以上 3a, 3b, 3c, 4a, 4b, 4c 图示操作说明。

安装
 1a. 用手按压圆圈区域
 1b. 按住同时向左推动按键
 1c. 拆下按键
 2a. 将按键水平放置，按键上的卡勾放入图中圆圈区域的卡槽中
 2b. 一只手轻轻按住按键中间偏右位置，另一只手向右推按键
 2c. 安装完成
 3a. 用手同时按压圆圈区域
 3b. 按住同时向左推动按键
 3c. 拆下按键
 4a. 将按键水平放置，按键上的卡勾放入图中圆圈区域的卡槽中
 4b. 一只手轻轻按住按键中间偏右位置，另一只手向右推按键
 4c. 安装完成

标志

	照明
	调光
	窗帘
	温度
	风扇
	场景

售后服务
 北京ABB低压电器有限公司
 北京经济技术开发区康定街 17 号
<http://www.abb.com/knx>
 Tel: +86 400-820-9696

PEONIA Replaceable rocker with/without icon

WARNING
 Risk of death and fire!
 Dangerous currents flow through the body when coming into direct or indirect contact with live components. This can result in electric shock, burns or even death. Work improperly carried out on current-carrying parts can cause fires.
 Disconnect the mains power supply prior to installation and/or disassembly!
 Permit work on the 230 V supply system to be performed only by specialist staff.

Please read the mounting instructions carefully and keep them for future use.
 Additional user information and detailed information is available at www.abb.com/knx.

Intended use
 Replacing rocker in selected color to compliment and blend into different environment concept theme, option: rocker with icon are available for easy function identification.

ABB i-bus®KNX Sensor
 PEONIA replaceable rocker with / without icon for 2/4 gang, 3/6 gang, 5/10 gang device.

i Product features
 PEONIA replacement rocker are available into three version: small, medium and wide width button. Small and medium width button can be dismantle and replace according to the above diagram instructions 1a, 1b, 1c, 2a, 2b, 2c. Wide width button can be dismantle and replace according to the above diagram instruction 3a, 3b, 3c, 4a, 4b, 4c

Installation
 1a. Press down on the identified "circle" area
 1b. While pressing down, push toward the left side of the device
 1c. Rocker remove
 2a. Place the rocker horizontal on the surface of the device, clip at the back of the rocker in position with the mounting hole
 2b. Press down on the rocker and push toward the right of the device
 2c. Rocker in position
 3a. Press down on the identified "circle" area
 3b. While pressing down, push toward the left side of the device
 3c. Rocker remove
 4a. Place the rocker horizontal on the surface of the device, clip at the back of the rocker in position with the mounting hole
 4b. Press down on the rocker and push toward the right of the device
 4c. Rocker in position

Symbol

	Lighting
	Dimming
	Shutter/Blind
	Temperature
	Fan
	Scene

Service
 ABB LV Installation Materials Co., Ltd. Beijing
 No. 17 Kangding Street, Beijing Economic-Technological Development Area 100176, P.R.China
<http://www.abb.com/knx>
 Tel: +86 400-820-9696