

SERVICE INSTRUCTION

# TruONE ATS

## Programming Switch data



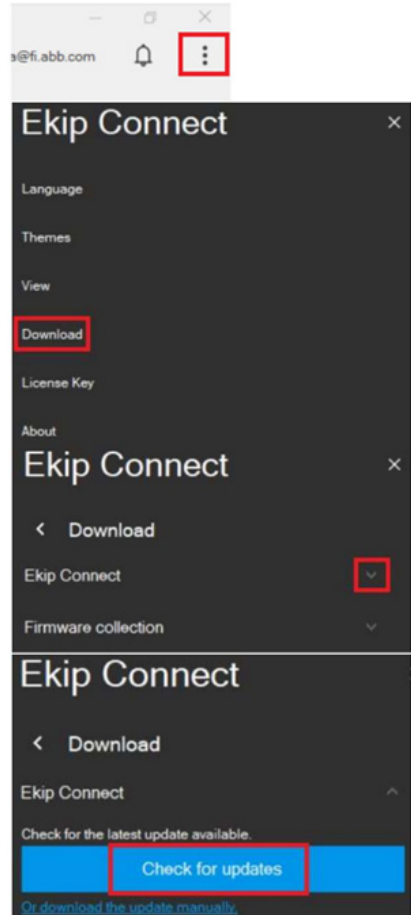
## TruONE Programming Switch data

Programming TruONE ATS switch data is like programming any other standard setting (for example time delays) so it does not require any special user role or license.

As first step download and install Ekip Connect 3 software.

<https://search.abb.com/library/Download.aspx?DocumentID=1SDC20011X-3000&LanguageCode=en&DocumentPartId=&Action=Launch>

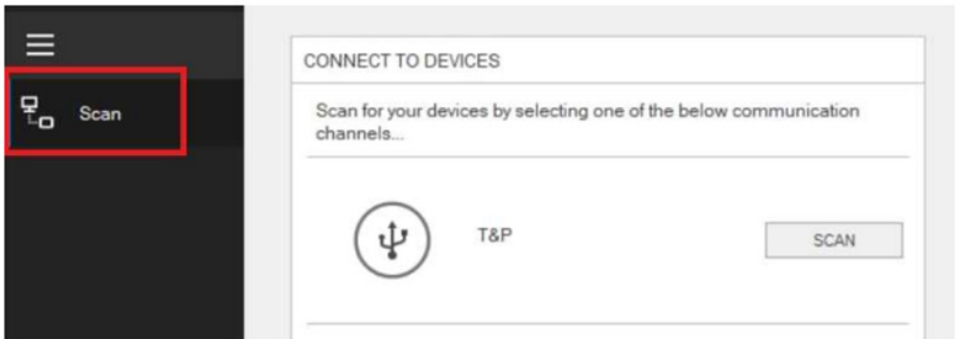
If already installed, check you have the latest updates installed.



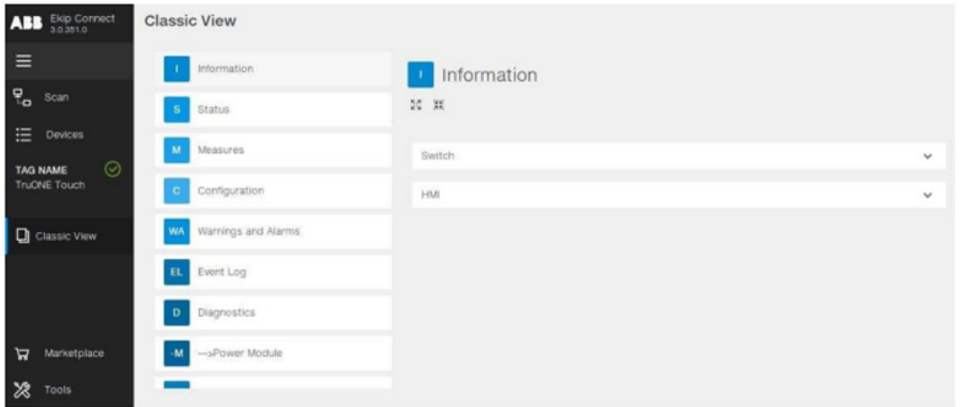
Then, connect laptop with Ekip T&P module to TruONE mini USB



Select T&P and scan



You are now connected



### Select Configuration – Switch Data – Switch Data Wizard



**Note:** Wrong switch data settings can lead to product malfunction so consult ABB if you are uncertain what to do.

There are two options how to change the switch data.

If you do not know what the correct settings are, then use the 1st option:

- Build TruONE part number by using the dropdown menus
- For example check the part number from the original product if you need to use the same settings

## Switch data update

X

Insert all Type Designation fields, then click "Generate Switch Data" button to generate Switch Data from Type Designation code.  
Click "Upload Switch Data" to transfer switch data to ATS.

## Type designation

ABB brand  
  ATS type  
  ATS size  
  Standard  
  Phase poles  
  Neutral  
  Controller level  
  Voltage code  
  Enclosure rating  
  Cabling direction  
  Production type

·  ·  ·  ·  ·  ·  ·  ·  ·  ·  ·  ·

- One example OXA400U3X3QB
- Build the part number by filling in every selection
- Select generate switch data
- Select upload switch data

## Type designation

ABB brand  
  ATS type  
  ATS size  
  Standard  
  Phase poles  
  Neutral  
  Controller level  
  Voltage code  
  Enclosure rating  
  Cabling direction  
  Production type

OX · A · 400 · U · 3 · X · 3 · Q ·   · B ·

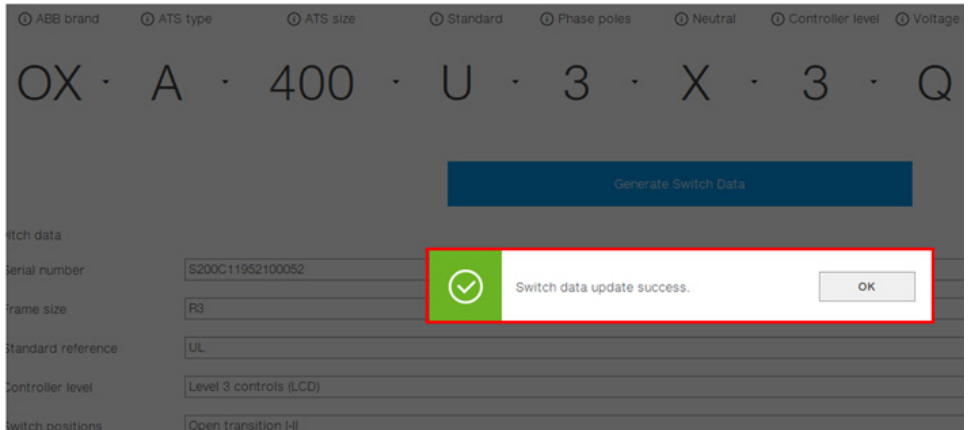
Generate Switch Data

## Switch data

Serial number	<input type="text" value="S200C11952100052"/>
Frame size	<input type="text" value="R2"/>
Standard reference	<input type="text" value="IEC"/>
Controller level	<input type="text" value="Level 4 controls (Touch)"/>
Switch positions	<input type="text" value="Delayed transition I-O-I"/>
Nominal current	<input type="text" value="200"/>
Pole number	<input type="text" value="3"/>
Cabling direction	<input type="text" value="Bottom entry"/>
Current measurement module	<input type="text" value="R2_250A"/>

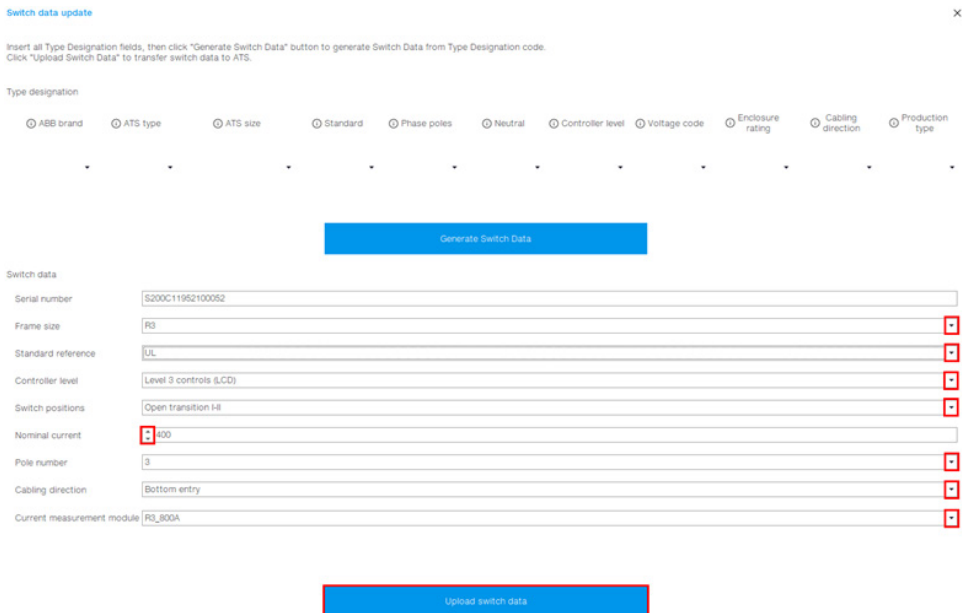
Upload switch data

Loading the new settings on the controller will take some time but switch data is updated once you get the following message

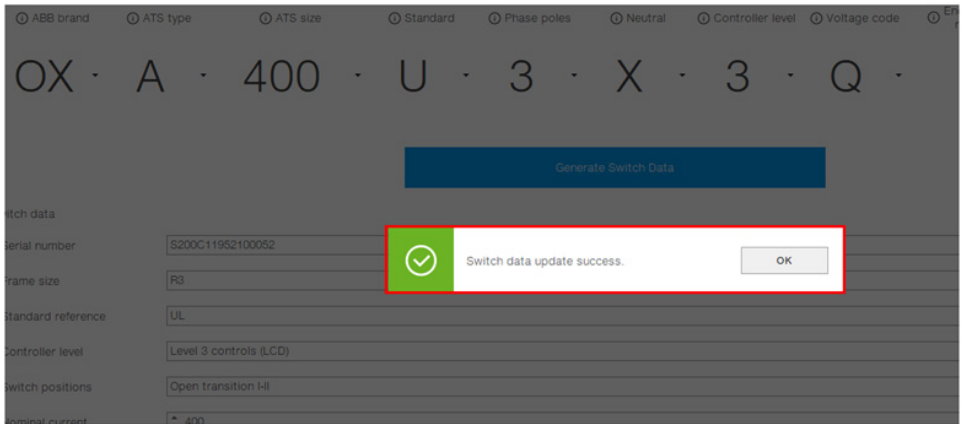


You can use the 2nd option in case you know the correct settings:

- select the correct settings from the dropdown menus
- upload switch data when ready



Loading the settings on the controller will take some time but switch data is updated once you get the following message



The screenshot shows the TRuONE software interface with the following fields and values:

Field	Value
ABB brand	OX
ATS type	A
ATS size	400
Standard	U
Phase poles	3
Neutral	X
Controller level	3
Voltage code	Q

A "Generate Switch Data" button is visible below the fields. A success message is displayed in a white box with a green checkmark icon:

Switch data update success. [OK]

Below the message, the following fields are visible:

Serial number	S200C11952100052
Frame size	R3
Standard reference	UL
Controller level	Level 3 controls (LCD)
Switch positions	Open transition I-II
Terminal current	400

You may now close the switch data window.

Switch data update



Insert all Type Designation fields, then click "Generate Switch Data" button to generate Switch Data from Type Designation code.  
Click "Upload Switch Data" to transfer switch data to ATS.

Type designation

ABB brand   ATS type   ATS size   Standard   Phase poles   Neutral   Controller level   Voltage code   Enclosure rating   Cabling direction   Production type



---

## Contact us

### **ABB Oy**

P.O. Box 622  
FI-65101 Vaasa  
Finland

**[new.abb.com/lowvoltage](https://new.abb.com/lowvoltage)**



[www.abb.com/truone](https://www.abb.com/truone)