

---

 TECHNICAL DATA SHEET

# PMA Smart Line - ALWD-M - Fitting

## 90° elbow, one-piece, metric thread

# PMA



One-piece, IP66 polyamide fitting for flexible non-metallic conduit



### Applications:

- In machine building, installation and construction industries

### Features & Benefits:

- Economical
- Easy „push-in“ installation
- Re-opening with screwdriver (for security reasons hand opening not possible)
- Space saving due to compact design
- Fits both conduit profiles - fine (T) and coarse (G)

### Ingress protection:

- IP66 (EN/IEC 60529)

### Materials:

- High-grade, specially formulated polyamide 6

### Compatible with:

- PMAFLEX Pro Conduits
- PMAFLEX Multilayer Conduits
- PMAFLEX Conduits
- PMA Smart Line Conduits

### Weathering resistance:

- Very good UV resistance and weathering characteristics, particularly in black

### Colour:

- Black
- Grey

### Chemical properties:

- Please refer to [www.pma.ch](http://www.pma.ch) (Technical Information / Chemical Resistance)

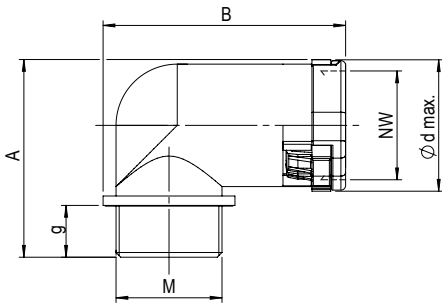
### Environmental properties:

- Free from halogens and cadmium
- RoHS and REACH compliant

**Product selection:**

Part no.		Thread size	Conduit size	Dimensions in mm (nom.)				Weight	Packing unit
black	grey	metric	NW	g	d2	A	B	kg/100 pcs	pcs/PU
ALWD-M120	SLWD-M120	M12x1.5	10	11.0	21.5	33.0	36.5	0.6	100
ALWD-M160	SLWD-M160	M16x1.5	10	11.0	21.5	33.0	38.5	0.6	100
ALWD-M162	SLWD-M162	M16x1.5	12	11.0	25.0	37.5	43.0	0.9	100
ALWD-M202	SLWD-M202	M20x1.5	12	11.0	25.0	37.5	45.0	1.0	100
ALWD-M207	SLWD-M207	M20x1.5	17	11.0	31.0	42.0	50.5	1.4	100
ALWD-M257	SLWD-M257	M25x1.5	17	12.0	31.0	43.0	53.0	1.5	100
ALWD-M253	SLWD-M253	M25x1.5	23	12.0	39.0	52.5	59.0	2.4	50
ALWD-M323	SLWD-M323	M32x1.5	23	15.0	39.0	56.0	62.5	2.5	50
ALWD-M329	SLWD-M329	M32x1.5	29	15.0	46.0	62.5	69.0	3.6	30
ALWD-M409	SLWD-M409	M40x1.5	29	19.0	46.0	66.5	72.0	3.5	30
ALWD-M406	SLWD-M406	M40x1.5	36	19.0	56.0	76.0	83.0	6.8	20
ALWD-M506	SLWD-M506	M50x1.5	36	19.0	56.0	76.0	87.0	6.4	20
ALWD-M508	SLWD-M508	M50x1.5	48	19.0	68.0	89.0	92.5	10.3	10
ALWD-M638	SLWD-M638	M63x1.5	48	19.0	68.0	89.0	99.0	9.5	10

Our customer service dept. or local distribution partner will be pleased to help you concerning product availability and lead time



<b>Mechanical Properties:</b>	<b>Value:</b>	<b>Test parameters:</b>	<b>Test method:</b>
Tensile modulus	1'200 ... 3'700 N/mm <sup>2</sup>		ISO 527
Tensile strength	45 ... 65 N/mm <sup>2</sup>		ISO 527
Notched bar impact test	4 ... 20 kJ/m <sup>2</sup>		ISO 180/1C

<b>Thermal properties:</b>	<b>Value:</b>	<b>Test parameters:</b>	<b>Test method:</b>
Continuous application temperature	-50 ... +105°C		PMA DO 9.21-4510
Upper application temperature	+120°C	(20'000 h)	PMA DO 9.21-4360
Short-term	+160°C	(168 h)	PMA DO 9.21-4360

<b>Fire safety properties:</b>	<b>Value:</b>	<b>Test parameters:</b>	<b>Test method:</b>
Fire performance	non flame-propagating		IEC EN 61386-1
Flame class	V2		UL 94

#### Content of delivery:

- Fitting

#### Assembly instructions:

- When mounting, push-in conduit completely and then pull back slightly to ensure the locking mechanism is fully engaged
- To Disassembly: reopen with screwdriver and tiwst for easy release
- Please consider the appropriate assembly instructions on [www.pma.ch](http://www.pma.ch)

ABB Switzerland Ltd,  
PMA Cable Protection  
Aathalstrasse 90  
8610 Uster, Switzerland  
Phone: +41 58 585 00 11  
[pma-info@ch.abb.com](mailto:pma-info@ch.abb.com)  
[www.pma.ch](http://www.pma.ch)

Let's write the future.  
Together. **abb.com**

We reserve the right to make technical changes or modify the contents of this document without prior notice. With regard to purchase orders, the agreed particulars shall prevail. ABB Installation Products Inc. does not accept any responsibility whatsoever for potential errors or possible lack of information in this document.

We reserve all rights in this document and in the subject matter and illustrations contained therein. Any reproduction, disclosure to third parties or utilization of its contents – in whole or in parts – is forbidden without prior written consent of ABB Inc. Copyright© 2019 ABB Installation Products Inc. All rights reserved

