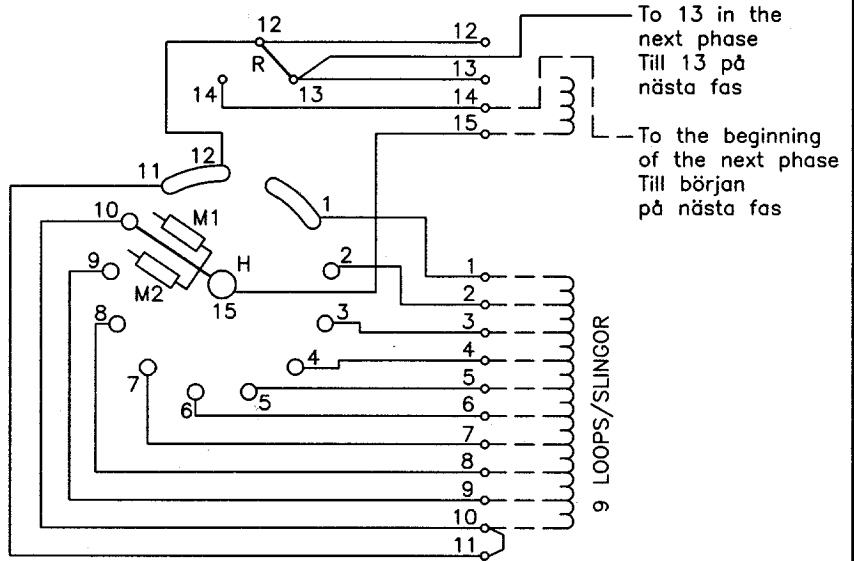


We reserve all rights in this document and in the information contained therein. Reproduction, use or disclosure to third parties without express authority is strictly forbidden.
© ABB 19

Pos. Lage	R connects förbinder	H connects förbinder
1	12-13 Y	1-15
2		2-15
3		3-15
4		4-15
5		5-15
6		6-15
7		7-15
8		8-15
9		9-15
10		10-15
10A	12-14 D	11-15
10B		12-15
11A		1-15
11		2-15
12		3-15
13		4-15
14		5-15
15		6-15
16		7-15
17		8-15
18	9-15	
19	10-15	
20		

On-load tap-changer type UZEYD, UZFYD, Y/D switching, 10 positions in Y and 10 positions in D. Max effective No. of turns in pos. 1 and in pos. 11. The tap-changer is delivered set in pos. 10.

Lindningskopplare typ UZEYD, UZFYD, Y/D koppling, 10 lägen i Y och 10 lägen i D. Max antal effektiva varv i läge 1 och läge 11. Lindningskopplaren levereras inställd i läge 10.



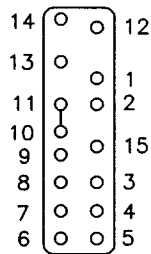
When operating from pos. 10 to 11 and from 11 to 10 the transformer must be de-energized.

Vid manöver från läge 10 till 11 och från 11 till 10 måste transformatorn vara spänningslös.

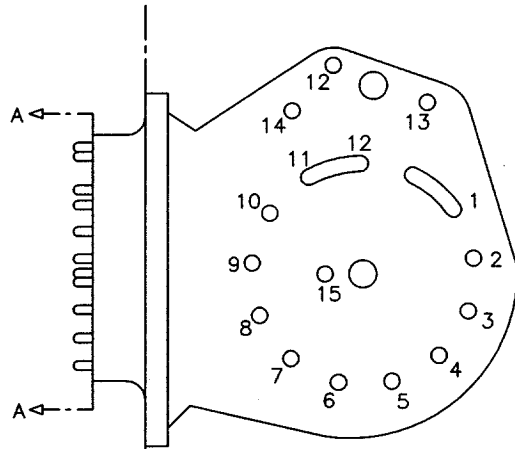
The tap-changer is shown in pos. 10
Lindningskopplaren visad i läge 10

- R Y/D change-over selector
Y/D-omkopplare
- H Main contact
Huvudkontakt
- M1, M2 Transition contacts
Motståndskontakter

Terminal board
Plint



Section A-A
Sektion A-A



Transformer tank
Transformatorlåda

Tap-changer tank
Lindningskopplarlåda

Sheet	Cont
Year	Week
Dept	
Revind	
Design checked by	
Drawn by	
Issued by	
Form No.	

Rev Ind	Revision	Appd	Year	Week	
Accepted by qual control R.Yngvesson		Accepted for prod by		Description (English) CONNECTION DIAGRAM	
Design checked by B-O.Stenestam		Drawn by L.Bergman		Description (own language) KOPPLINGSSCHEMA	
Drawing checked by M.Hedlund		Issued by Dept Year Week COM/TKO 97 34		File name 0399-6	
Asea Brown Boveri				Lang	Sheet
				Revind	Cont

5492 0399-6