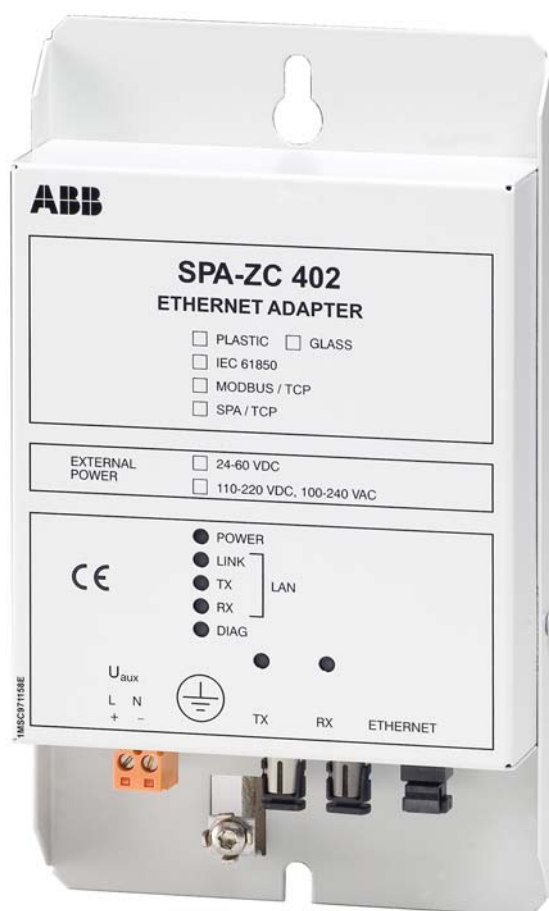


Ethernet Adapter SPA-ZC 402

Modbus/TCP Bridge

Installation and Commissioning Manual



Contents

Copyrights	5
1. Introduction	7
1.1. This manual	7
1.2. Use of symbols	7
1.3. Intended audience	7
1.4. Product documentation	8
1.5. Document conventions	8
1.6. Revision history	9
2. Safety information	11
3. Product overview	13
3.1. Features	14
3.2. Transmission Control Protocol (TCP)	15
4. Installation	17
4.1. Mechanical installation	17
4.2. Installing communication cable	17
4.2.1. Auxiliary power connection	17
4.3. Communication Engineering Tool for SPA-ZC 40x	17
4.3.1. System requirements	17
4.3.2. Installing Communication Engineering Tool for SPA-ZC 40x	18
4.3.3. Uninstalling Communication Engineering Tool for SPA-ZC 40x	19
4.4. Connecting to SPA-ZC 402	19
4.4.1. Changing computer's IP address	19
4.4.2. Checking connection to SPA-ZC 402	20
5. Engineering	23
5.1. Overview of engineering	23
5.2. Creating project	23
5.3. Restarting	24
5.4. Building object tree	25
5.4.1. Adding Device object	26
5.4.2. Adding Logical Device objects	27
5.5. Configuring by using imported CID file	27
5.6. Configuring communication parameters	28
5.6.1. Uplink network settings	28
5.6.2. Communication parameters for Modbus	30
5.7. Downloading configuration	31
6. Commissioning	33
6.1. Checking Modbus TCP communication	33
7. Technical data	35

7.1. Interfaces	35
7.2. Test and conditions	36
8. Maintenance and service	39
8.1. LED indicators.....	39
8.2. Communication settings	39
8.3. IP Query	40
8.4. Identification.....	41
8.5. Obtaining error logs.....	42
9. Ordering information	43
10. Terminology	45
11. Abbreviations	47

Copyrights

The information in this document is subject to change without notice and should not be construed as a commitment by ABB Oy. ABB Oy assumes no responsibility for any errors that may appear in this document.

In no event shall ABB Oy be liable for direct, indirect, special, incidental or consequential damages of any nature or kind arising from the use of this document, nor shall ABB Oy be liable for incidental or consequential damages arising from use of any software or hardware described in this document.

This document and parts thereof must not be reproduced or copied without written permission from ABB Oy, and the contents thereof must not be imparted to a third party nor used for any unauthorized purpose.

The software or hardware described in this document is furnished under a license and may be used, copied, or disclosed only in accordance with the terms of such license.

© Copyright 2009 ABB Oy

All rights reserved.

Trademarks

ABB is a registered trademark of ABB Group. All other brand or product names mentioned in this document may be trademarks or registered trademarks of their respective holders.

Guarantee

Please inquire about the terms of guarantee from your nearest ABB representative.

1. Introduction

1.1. This manual

This manual provides thorough information on the SPA-ZC 402 Ethernet Adapter and the central concepts related to it. SPA-ZC 402 Ethernet is used for connecting any Intelligent Electronic Devices (IED), which provides fibre-optic SPA bus, to the Modbus/TCP Bridge. In the manual you find information on SPA-ZC 402 and its components, an introduction to engineering tasks and a description of the basic operations.

The information in this manual is intended for application engineers, who install and configure SPA-ZC 402.

1.2. Use of symbols

This publication includes the following icons that point out safety-related conditions or other important information:



The electrical warning icon indicates the presence of a hazard which could result in electrical shock.



The caution icon indicates important information or warning related to the concept discussed in the text. It might indicate the presence of a hazard which could result in corruption of software or damage to equipment or property.



The information icon alerts the reader to relevant facts and conditions.

It should be understood that operation of damaged equipment could, under certain operational conditions, result in degraded process performance leading to information or property loss. Therefore, comply fully with all notices.

1.3. Intended audience

This manual is intended for installation personnel, administrators and skilled operators to support installation of the software.

1.4. Product documentation

Name of the manual	Document ID
SPA-ZC 402 configuration CD	1MRS151049
CAP 505 User's Guide	1MRS752292-MUM
SPA-ZF Optical glass fibres, multimode graded index type	1MRS755371
Plastic-core fibre-optic cables, Features and instructions for mounting	1MRS752089

1.5. Document conventions

The following conventions are used for the presentation of material:

- The words in names of screen elements (for example, the title in the title bar of a dialog, the label for a field of a dialog box) are initially capitalized.
- Capital letters are used for the name of a keyboard key if it is labeled on the keyboard. For example, press the CTRL key. Although the Enter and Shift keys are not labeled they are written in capital letters, e.g. press ENTER.
- Lowercase letters are used for the name of a keyboard key that is not labeled on the keyboard. For example, the space bar, comma key and so on.
- Press CTRL+C indicates that you must hold down the CTRL key while pressing the C key (to copy a selected object in this case).
- Press ALT E C indicates that you press and release each key in sequence (to copy a selected object in this case).
- The names of push and toggle buttons are boldfaced. For example, click **OK**.
- The names of menus and menu items are boldfaced. For example, the **File** menu.
- The following convention is used for menu operations: **Menu Name > Menu Item > Cascaded Menu Item**. For example: select **File > Open > New Project**.
- The **Start** menu name always refers to the **Start** menu on the Windows Task Bar.
- System prompts/messages and user responses/input are shown in the Courier font. For example, if you enter a value out of range, the following message is displayed: Entered value is not valid.

You may be told to enter the string MIF349 in a field. The string is shown as follows in the procedure: MIF349

- Variables are shown using lowercase letters: sequence name

1.6.**Revision history**

Version	Date	History
A	30.06.2006	Document created
B	20.05.2009	SPA-ZC 402 2.1.2 additions

2. Safety information



Non-observance can result in death, personal injury or substantial property damage.

Only a competent electrician is allowed to carry out the electrical installation.

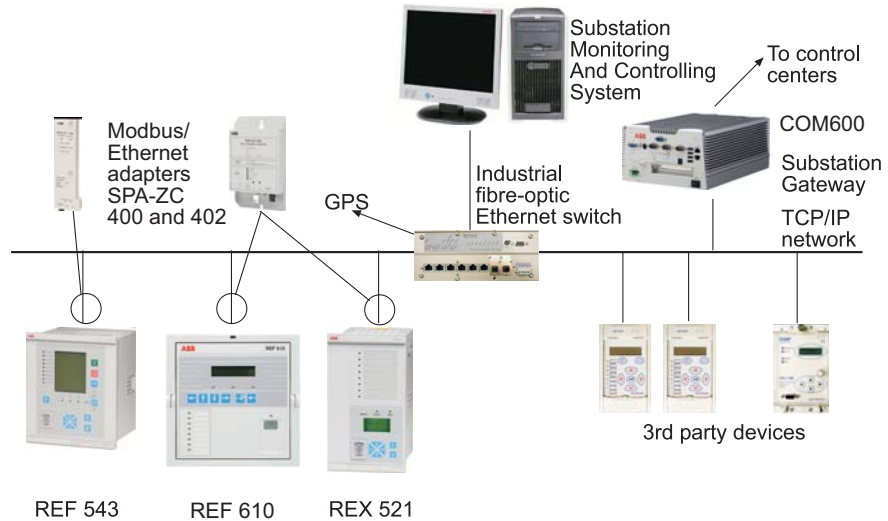
National and local electrical safety regulations must always be followed.



The device contains components which are sensitive to electrostatic discharge. Unnecessary touching of electronic components must therefore be avoided.

3. Product overview

SPA-ZC 402 is used to connect IEDs with the Modbus protocol over the TCP/IP network using the same Ethernet link. SPA-ZC 402 converts Modbus RTU messages to Modbus TCP. The IED is configured like Modbus RTU device.



A060009

Fig. 3-1 Conceptual picture of a typical system setup



It is not allowed to connect multiple SPA devices to SPA-ZC 402 in the SPA loop because of performance reasons. If SPA-ZC 402 is an integral part of a bigger rack, for example of a SPACOM 300 series rack, configure all devices under the same SPA-ZC 402. The SPACOM 300 series rack is one SPA device.

The mechanical and electrical connection of the Ethernet adapter to an IED interface is described in Section 4. Installation. The Ethernet adapter programming is described in Section 5. Engineering.

It is a prerequisite to understand the communication properties of Intelligent Electronic Devices (IED) before connecting to the Ethernet adapter. This information is available in the manual for the protection relay in question. It is also necessary to have basic understanding of the Modbus/TCP Bridge to which the IEDs will be connected.

ABB has tested the following third-party devices, which are recommended to be used with SPA-ZC 402:

Industrial 10/100 MBit switches:

- RuggedCom RS800
- RuggedCom RS1600
- Westermo FST208

Media converters:

- RuggedCom RMC-100-MM
- IMC McBasic MM1300
- Allied Telesyn AT-MC302-20

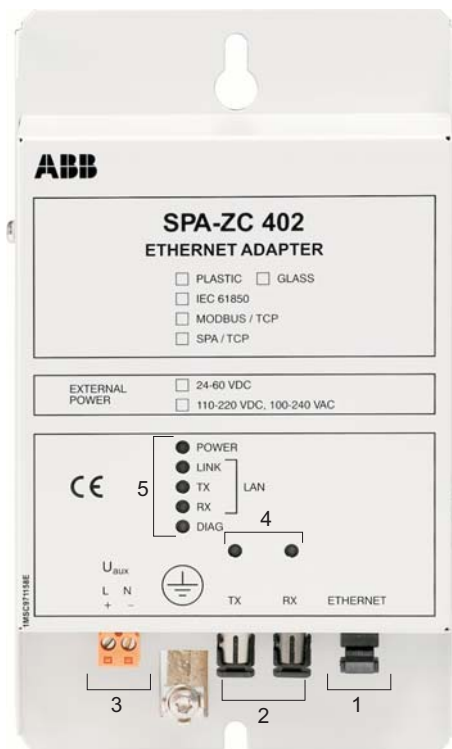
More tested devices can be found on the ABB web site
<http://www.abb.com/substationautomation>.

3.1.

Features

SPA-ZC 402 has the following features:

- Auxiliary power supply
- Support of Modbus communication over TCP/IP



A040157B

Fig. 3.1.-1 Parts of SPA-ZC 402

- 1 Ethernet connector
- 2 Fibre-optic SPA bus connectors
- 3 Auxiliary power supply connector
- 4 SPA TX and RX LEDs
- 5 LAN and diagnostics LEDs

3.2. Transmission Control Protocol (TCP)

The Transmission Control Protocol (TCP) is the most commonly used protocol for exchanging data between communication devices using Ethernet. Unlike UDP, the TCP protocol guarantees reliable transmission between applications. TCP also distinguishes data for multiple, concurrent applications running on the same host.

A data message sent as a TCP/IP message means that the higher layer Transmission Control Protocol assembles the message or file into smaller packets. These are then transmitted over the Internet and received by a TCP layer which reassembles the packets into the original message.

4. Installation

This chapter describes the installation of the SPA-ZC 402 module and the Communication Engineering Tool (CET) for SPA-ZC 40x. For additional information, such as technical data, maintenance and service, refer to Section 7. Technical data and Section 8. Maintenance and service.

4.1. Mechanical installation

Screw the SPA-ZC 402 module on the cubicle's bottom or wall near the protection relay. Pay attention to the length of the fibre-optic SPA cable when you are installing the SPA-ZC 402 module.

4.2. Installing communication cable

Connect the fibre-optic SPA bus cable between IED and SPA-ZC 402. Connect the LAN cable to the LAN connector of SPA-ZC 402. The other end of the cable is connected to the Ethernet switch.

4.2.1. Auxiliary power connection

Voltage range for the external power connection (U_{aux}) is

- 110-220 VDC, 100-240 VAC or
- 24-60 VDC

Table 4.2.1.-1 Screw terminal of U_{aux} connection

Screw terminal	AC	DC
1	L	+
2	N	-

In addition there is an earthing screw for the protective earth conductor beside the screw terminals in the casing.

4.3. Communication Engineering Tool for SPA-ZC 40x

4.3.1. System requirements

Communication Engineering Tool (CET) for SPA-ZC 40x runs on Windows 2000, Windows XP and Windows Server 2003 operating systems. A PC capable of running one of these operating systems is sufficient also for CET for SPA-ZC 40x. For more information, refer to Section 1.4. Product documentation. The detailed system requirements can be seen below.

- 20 MB free hard disk space if Microsoft .NET Framework 1.1, which is required for running CET for SPA-ZC 40x, has already been installed.
- 100 MB free hard disk space, if the Microsoft .NET Framework 1.1 is not installed. It is installed automatically if it is not found.

4.3.2.

Installing Communication Engineering Tool for SPA-ZC 40x

1. Uninstall the previous version.
2. Close all the open programs and insert the Communication Engineering Tool (CET) for SPA-ZC 40x installation CD to the CD-ROM drive of your PC.
3. The Installation program starts automatically. If this is not the case, open the program by starting setup.exe on the CD drive.
4. The installation wizard extracts the installation files to your local computer.
5. The CET for SPA-ZC 40x Installation program starts. In this dialog, click **Next**.
 - With the **Back** button you can return to the previous dialog, and with the **Cancel** button, exit the installation wizard. This applies to all the dialogs in the installation wizard.
6. Read the License Agreement, select the option **I accept the license agreement** and click **Next** to continue the installation.
 - If the option **I do not accept the license agreement** is selected, the **Next** button is not available and you cannot continue the installation.
7. Select the folder in which the application is to be installed.
 - To select the default folder shown at the bottom of the dialog, click **Next**.
 - To select another folder, click **Browse**, choose the folder you want and click **Next**.
8. Both manuals are installed by default on your local hard drive. Click **Next** to continue the installation.
 - To install a manual, click the respective manual and select **Will be installed on local hard drive**.
 - To install the documentation feature, click the respective manual and select **Entire feature will be installed on local hard drive**.
 - To install the manual when required, click the respective manual and select **Feature will be installed when required**.
 - Not to install the manual, click the respective manual and select **Entire feature will be unavailable**.
9. Click **Next** to begin the installation.
10. Follow the progress of the installation in a dialog that also shows the directory path where the files are copied. At this point, you can still cancel the installation by clicking **Cancel**.
11. A dialog opens to show that the tool has been successfully installed. Close the dialog and finish the installation by clicking **Finish**.
12. When clicking **Finish**, the wizard also installs the Microsoft SQL Server automatically, if it is not installed already.
13. Start CET for SPA-ZC 40x by selecting **Start > Programs > Communication Engineering Tool for SPA-ZC 40x > Communication Engineering Tool**.

4.3.3. Uninstalling Communication Engineering Tool for SPA-ZC 40x

1. Open the Add or Remove Programs dialog by selecting **Start > Settings > Control Panel > Add or Remove Programs**.
2. Select Communication Engineering Tool (CET) for SPA-ZC 40x and click **Remove**.



Uninstall CET for SPA-ZC 40x in order to install a new version and to update the software. Uninstallation does not remove the Microsoft SQL Server and .NET Framework. Removing these programs can affect the functionality of the other ABB applications.



Detailed instructions for upgrading the software are provided when the upgrade is available.

4.4. Connecting to SPA-ZC 402

The Sections 4.4.1. and 4.4.2. describe how to connect to SPA-ZC 402 from the Communication Engineering Tool (CET) for SPA-ZC 40x.

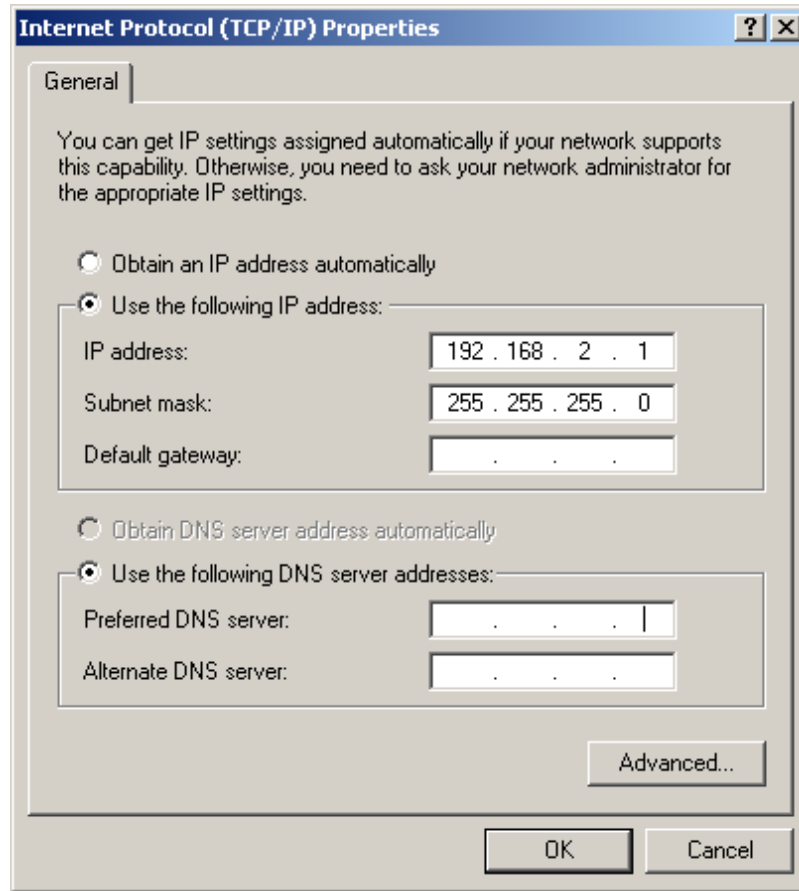
4.4.1. Changing computer's IP address

To connect SPA-ZC 402, the used computer and SPA-ZC 402 must use the same address space.

To change the computer's IP address space to be the same as in SPA-ZC 402:

1. Open the Network Connections in Control Panel.
2. Type, for example, the following IP address to the IP address box: 192.168.2.1.
See Fig. 4.4.1.-1.

You must have system administration rights to perform the task.



A060241

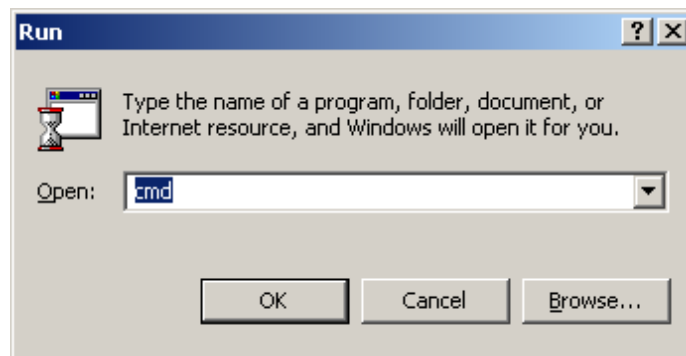
Fig. 4.4.1.-1 Changing IP address

4.4.2.

Checking connection to SPA-ZC 402

Check the connection to SPA-ZC 402 by using the ping command:

1. Open the Run dialog.
2. Type cmd to the Open box, see Fig. 4.4.2.-1.

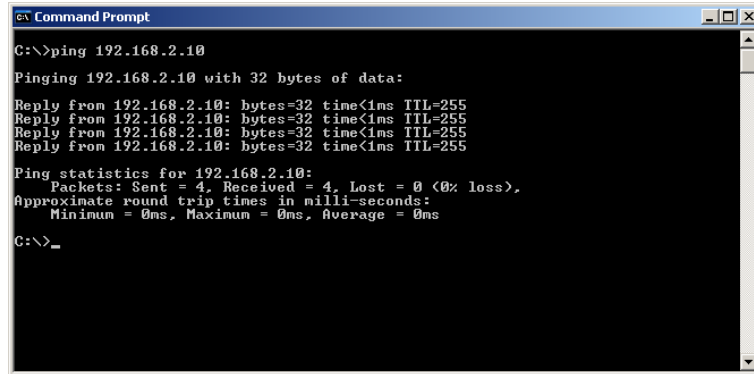


A060242

Fig. 4.4.2.-1 Starting command prompt

3. Click **OK** to run the command prompt.

4. Type ping 192.168.2.10, see Fig. 4.4.2.-2.



```
Command Prompt
C:\>ping 192.168.2.10
Pinging 192.168.2.10 with 32 bytes of data:
Reply from 192.168.2.10: bytes=32 time<1ms TTL=255
Reply from 192.168.2.10: bytes=32 time<1ms TTL=255
Reply from 192.168.2.10: bytes=32 time<1ms TTL=255
Reply from 192.168.2.10: bytes=32 time<1ms TTL=255

Ping statistics for 192.168.2.10:
    Packets: Sent = 4, Received = 4, Lost = 0 (0% loss),
    Approximate round trip times in milli-seconds:
        Minimum = 0ms, Maximum = 0ms, Average = 0ms

C:\>_
```

Fig. 4.4.2.-2 Pinging SPA-ZC 402

SPA-ZC 402 responds to the ping command if the computer and SPA-ZC 402 are on the same network.

5. If SPA-ZC 402 responds with the IP address, the connection is established between the computer and SPA-ZC 402.

5. Engineering

This section guides when performing the engineering tasks required before using SPA-ZC 402.



Note that all the possible engineering scenarios are not included in this manual. You must have engineering rights to be able to perform the tasks described in this section.

5.1. Overview of engineering

The engineering and maintenance of SPA-ZC 402 is done by using CET for SPA-ZC 40x functions. The device's communication structure is described in the Project Explorer dialog. The structure is built by using device objects. These objects have communication properties that can be accessed through the Object Properties dialog. These properties define for example the IP addresses, unit addresses, and descriptions.

The communication structure consists of Modbus devices.

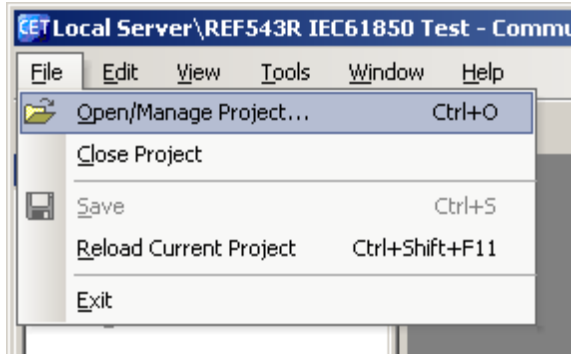
When the structure is complete and all the objects have been set up properly, the configuration is downloaded through FTP to SPA-ZC 402 by using the CID (Configured IED Description) Export function.

The engineering tasks are the following:

1. Building an object tree by adding a device to the configuration
2. Configuring object properties, for example modifying TCP/IP address
3. Configuring Modbus communication parameters
4. Exporting configuration data to SPA-ZC 402

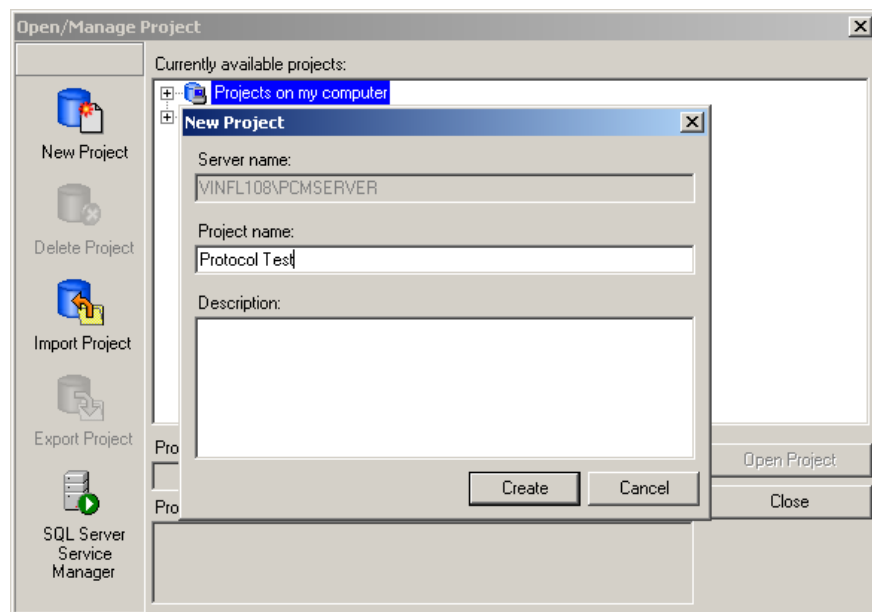
5.2. Creating project

You need to start the Communication Engineering Tool (CET) for SPA-ZC 40x to open and name a project, see Fig. 5.2.-1 and Fig. 5.2.-2.



A040013B

Fig. 5.2.-1 Opening a project



A040014B

Fig. 5.2.-2 Creating a new project

5.3. Restarting

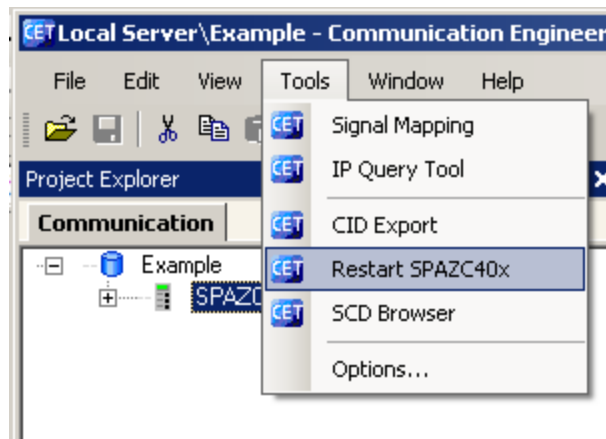
Use this function to restart the SPA-ZC 402 at runtime.

1. Select IED and **Tools > Reset Tool** to open the restart panel, see Fig. 5.3.-1
2. Click **Reset**.

The results are reported to the UI text box.



Do not use the restart function while downloading configuration to SPA-ZC 402. When download is finished, SPA-ZC 402 is restarted automatically.



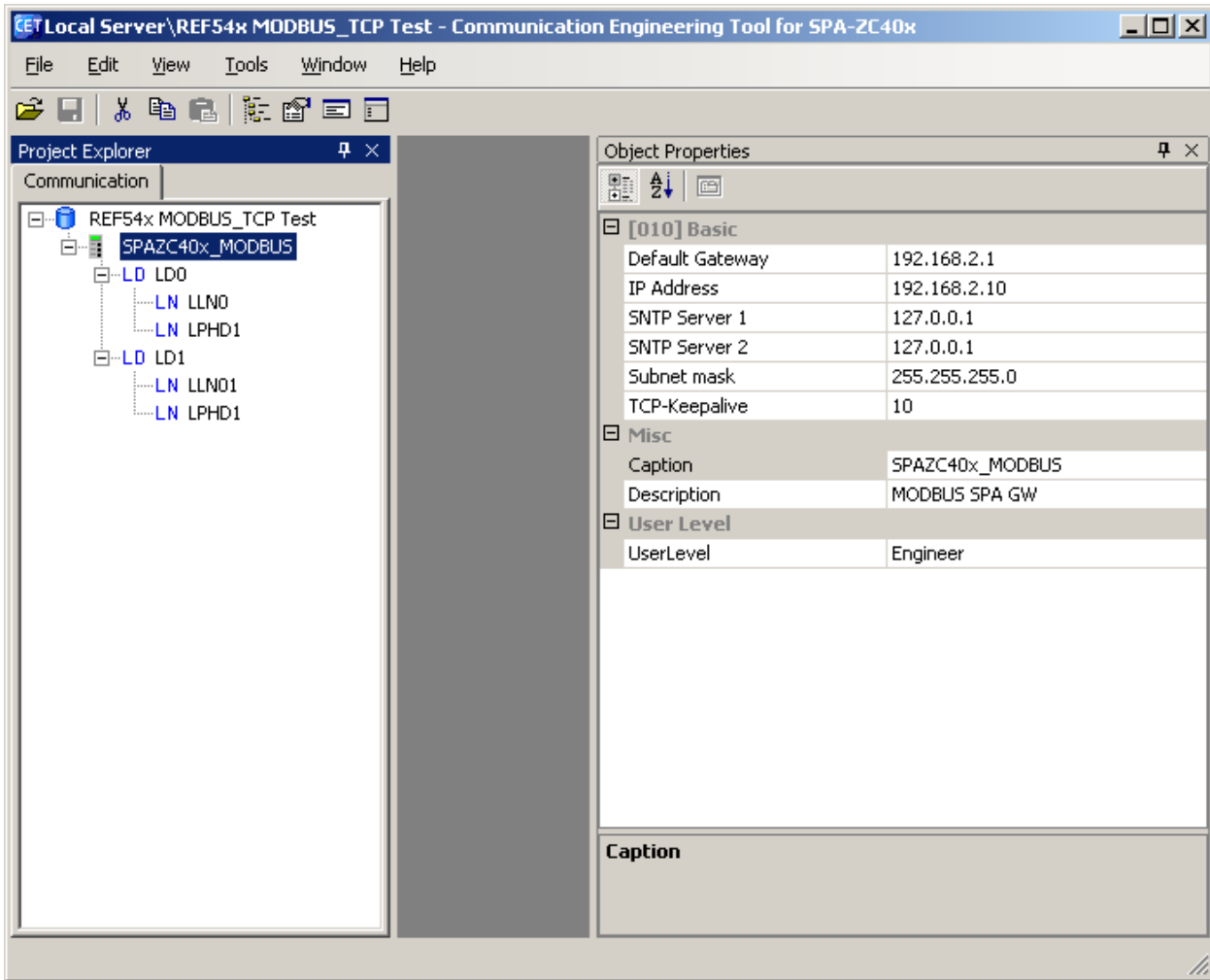
A060396

Fig. 5.3.-1 Restarting

5.4. Building object tree

After creating the project you need to build and configure an object tree in the Communication Engineering Tool (CET) for SPA-ZC 40x to define the communication structure.

Fig. 5.4.-1 shows an example of the object tree when it has been built. In the example tree you can see the SPA-ZC 402 object and its child objects as devices and data objects. Indentation is used to indicate the parent-child relationship between the objects.



A051858

Fig. 5.4.-1 Example view of the SPA-ZC 40x Communication Engineering Tool

Add objects to the object tree in the communication structure by right-clicking the object to which you want to add a child object. Use LN and DOI wizards to create new objects.

Add the objects in the following order:

1. SPA4C40x_MODBUS Device object (SPA-ZC 40x)
2. Logical Device objects
3. Logical Node objects
4. Data objects

5.4.1. Adding Device object

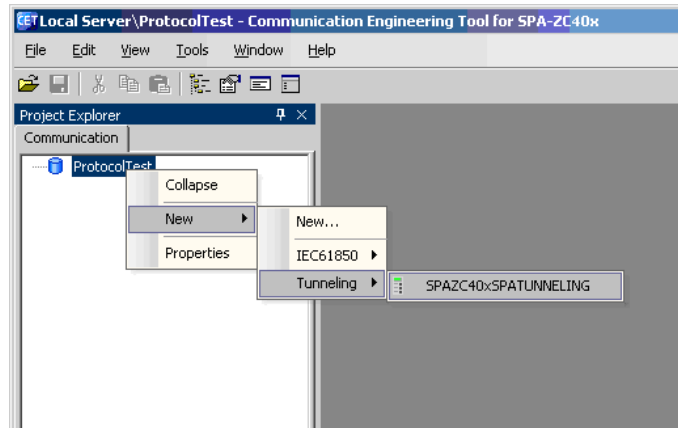
To build the object tree:

1. Add a SPA4C40x_MODBUS Device object in the communication structure by selecting the project name.

In the example, the project Protocol Test is selected.

2. Right-click Protocol Test
3. Select **New > Tunneling > SPAZC40x_MODBUS**, see Fig. 5.4.1.-1.

A project can contain several tunneling device objects, for example all substation feeders.



A051852

Fig. 5.4.1.-1 Adding a Tunneling Device object

Ensure that the new IED name is unique within the planned network by renaming the IED, for example REF545_F1.



A Tunneling Device object cannot be configured for an IEC 61850 gateway.

5.4.2. Adding Logical Device objects

For tunneling devices, there is no need to add logical devices inside the parent object. Logical devices LD0 and LD1 are already included to maintain the SCL compatibility.

5.5. Configuring by using imported CID file

If you have to configure several SPA-ZC 402 with the similar settings, it is possible to import a previously generated CID file and change the communication addresses, typically by changing the IP address.

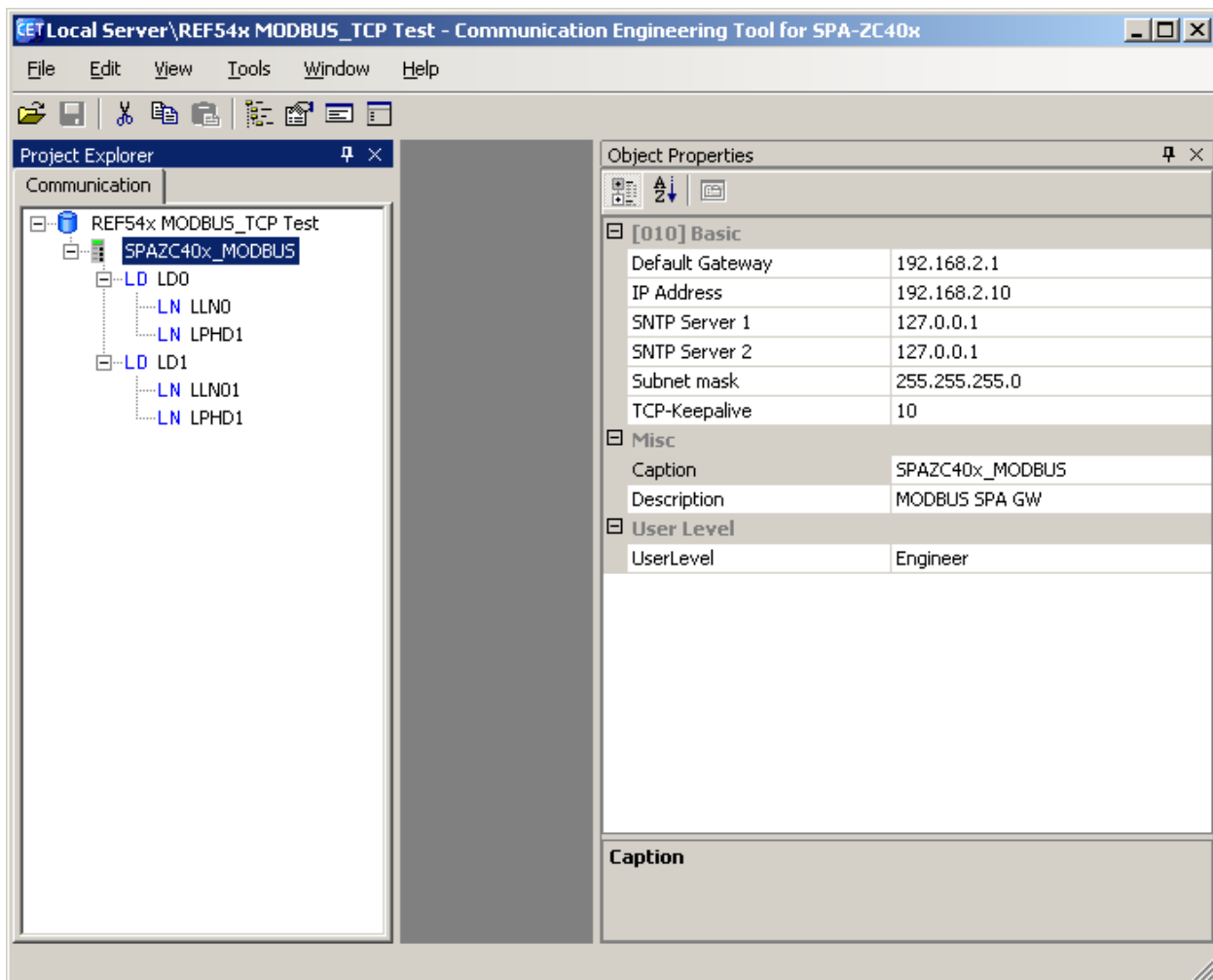
Create a new project and add a SPAZC40x_MODBUS Device. Select the CID import function by right-clicking the LD1 logical device. In the CID import dialog you can select the right CID file from the workstation directory and import it to a previously created logical device.

5.6. Configuring communication parameters

SPA-ZC 402 communication parameters are located in the device properties. SPA-ZC 402 uses static IP addresses, which have to be defined in the planned network structure.

For uplink network settings, see Sections 5.6.1. Uplink network settings and 5.6.2. Communication parameters for Modbus.

5.6.1. Uplink network settings



A051858

Fig. 5.6.1.-1 Uplink network settings

- Default Gateway

The IP address Default Gateway defines the gateway address that forwards the IP traffic between the local subnet and the outside world. The default IP address is 192.168.2.1 and this has to be changed according to the planned network structure.

- IP Address

The IP address identifies SPA-ZC 402 in the local area network (LAN). All communication via SPA-ZC 402 uses this address. The default value 192.168.2.10 has to be changed to a unique address according to the planned network structure.

- **SNTP Servers**

SPA-ZC 402 uses SNTP as its own real-time clock. The time is used to synchronize an IED with Modbus. The secondary SNTP server is used if the primary SNTP server for some reason drops off the network.

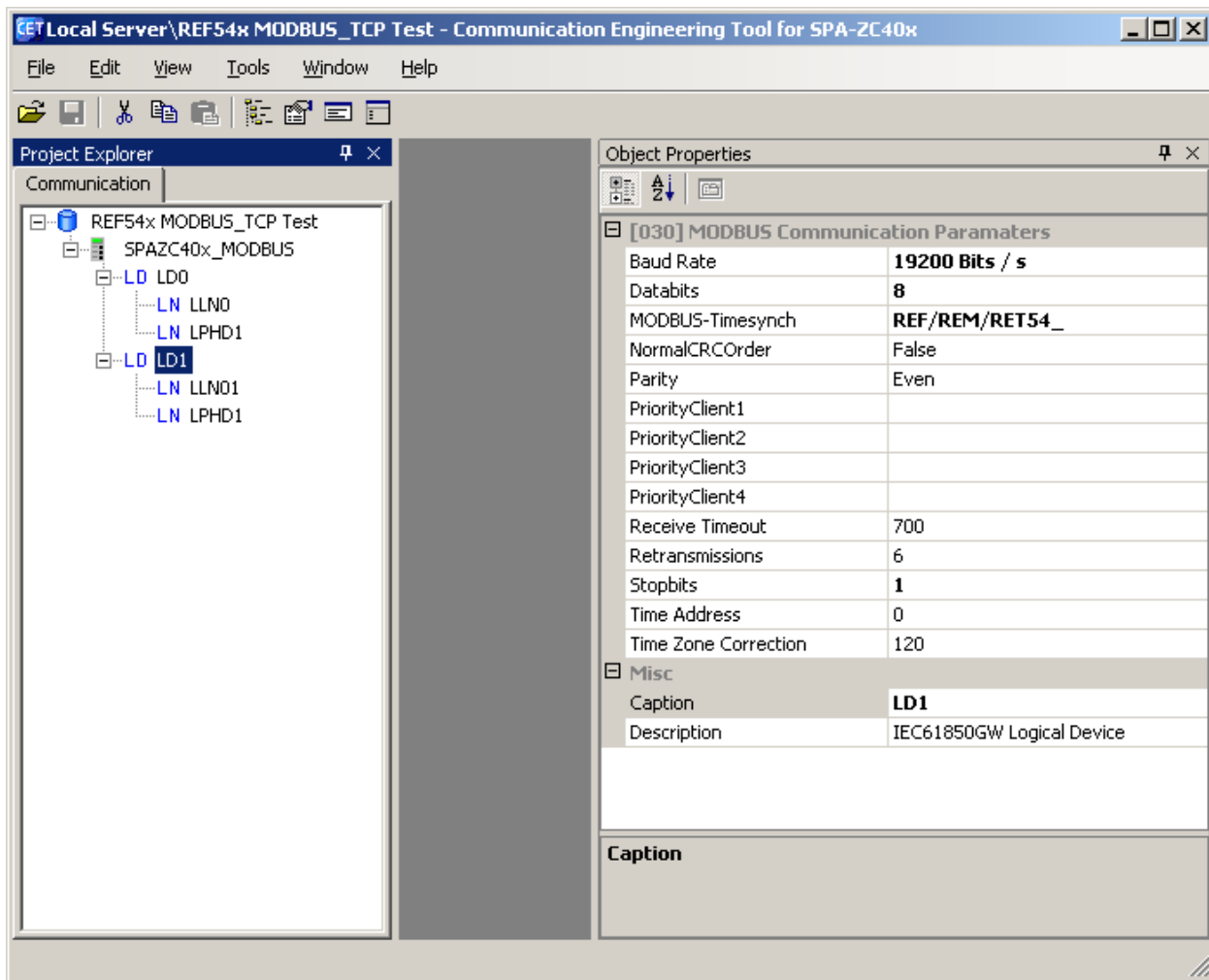
- **Subnet mask**

The Subnet mask address defines which addresses have access to the default gateway.

- **TCP-Keepalive**

The status of the TCP/IP connection is monitored by transmitting keep alive-messages at configured intervals. This is done invisibly to the user. The value is in minutes and the default is 10 minutes.

5.6.2. Communication parameters for Modbus



A051854

Fig. 5.6.2.-1 Modbus communication parameters

- Baud Rate

The possible communication speed settings of the Modbus bus are:

- 1200 bps
- 2400 bps
- 4800 bps
- 9600 bps
- 19200 bps
- 38400 bps
- Receive Timeout

Receive Timeout defines how long SPA-ZC 402 waits for the slave's response before it considers the slave to be non-responding. The unit is milliseconds.

- Retransmissions

Retransmissions defines how many times a message is resent after connection is considered to be temporarily broken.

- Modbus-Timesynch

If enabled, SPA-ZC 402 sends time synchronization messages to the relay. If SPA-ZC 402 is not connected to a SNTP server, time synchronization to the slave should be disabled as well.

- Time Zone Correction

Due to the SNTP time synchronization, a time offset must be added to the Modbus time synchronization message depending on the time zone. The value is in minutes and ranges from -720 to 720. It is comparable to the Coordinated Universal Time (UTC).

- PriorityClient1...PriorityClient4

When using multiple Modbus clients, there can be up to four so called Priority Clients. These clients are never disconnected by SPA-ZC 402. A client, who is not a Priority Client, can be disconnected to ensure a new client connection if the maximum number of connections is exceeded.

- NormalCRCOrder

If enabled, the low-order byte of the Modbus Checksum field is appended first, followed by the high-order byte. In this case, the CRC high-order byte is the last byte to be sent in the message.

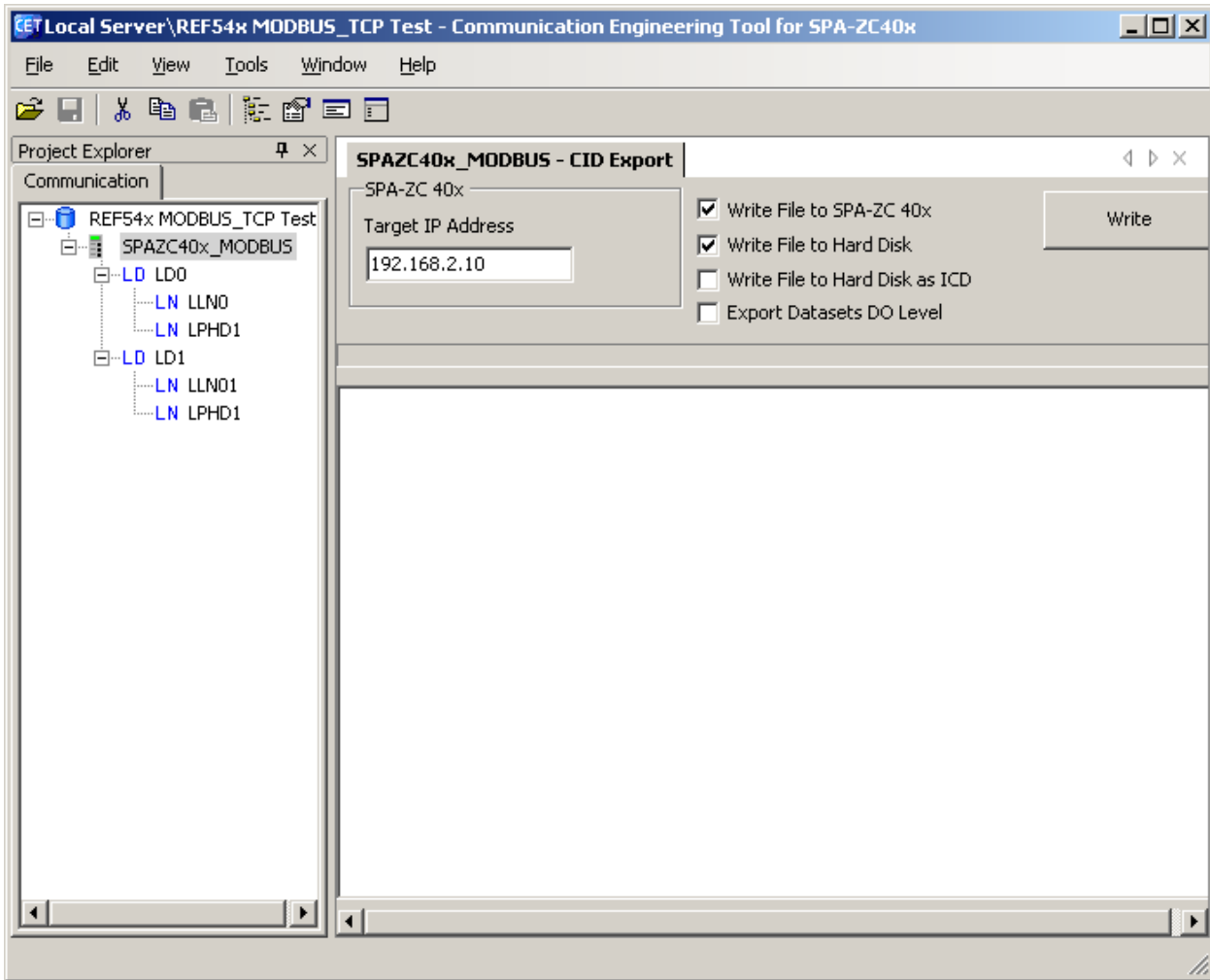
5.7. Downloading configuration

After you have built the object tree and done the communication configuration, you can download the configuration to SPA-ZC 402:

1. Select the SPAZC40x_MODBUS Device object and right-click to select the CID Export.
2. If you download configuration to SPA-ZC 402 the first time, change the IP address from default address (192.168.2.10) to new IP address according to the planned network structure.

When downloading the device's configuration, the device's current IP address must be used as Target IP Address, see Fig. 5.7.-1. When using previously non-configured SPA-ZC 402, default value (192.168.2.10) should be used.

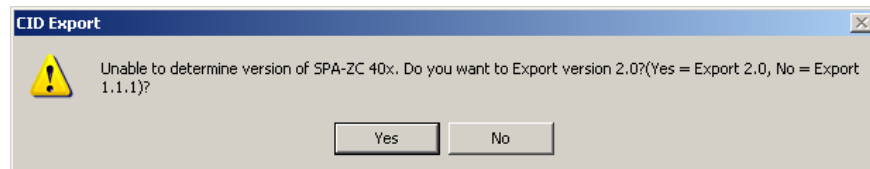
When the new configuration to SPA-ZC 402 is downloaded, Communication Engineering Tool (CET) checks if the basic IP addresses are changed. If a change is detected, CET asks whether new addresses are taken into use. If the changes are not accepted, SPA-ZC 402 uses the old IP address from the previous configuration. The IP addresses can be verified with, for example, IP Query Tool. For more information about IP Query Tool, refer to Section 8.3. IP Query.



A051856

Fig. 5.7.-1 Downloading the device's configuration

If SPA-ZC 402 is connected to a system where the connection to it can be obtained, the Export function tries to determine the SPA-ZC 402 version and exports the export file accordingly. If the connection is disabled, prompt the correct version to be exported, see Fig. 5.7.-2.



A060129

Fig. 5.7.-2 Selecting correct SPA-ZC 402 version to be exported

6. Commissioning

The downloaded Configuration file is taken into use when SPA-ZC 402 is restarted automatically.

Normally, the device is reset automatically after the configuration is downloaded with Communication Engineering Tool (CET) for SPA-ZC 40x.

After downloading the configuration you can check the basic TCP/IP functionality with the ping command in command prompt:

```
c:\>ping x.x.x.x.
```

You can see how the configuration process is progressing from the diagnostic LEDs. When the SPA-ZC 402 configuration is completed, the green LED is on.

If the configuration fails, check the error log files from the SPA-ZC 402 file system. The status and error logs are located in the /log directory. For more information about maintenance, refer to Chapter 8. Maintenance and service.

6.1. Checking Modbus TCP communication

To check the Modbus TCP communication, open the MODBUS/TCP client, for example Communication Engineering Tool (CET) for the IEC 61850 OPC Server, then send a Read Holding Registers message querying some Modbus points supported by the Modbus slave connected to the serial port of SPA-ZC 402. In the reply you receive the slave's data for those registers.

If you have Modbus Time Synchronization enabled in the SPA-ZC 402 configuration, you see the Modbus communication indicator LEDs blinking periodically even if the MODBUS/TCP client is not connected.

7. Technical data

7.1. Interfaces

IED interface

- ST multimode glass fibre transmitter/receiver pair or
- Snap-in multimode plastic fibre transmitter/receiver pair

Ethernet interface

- Multimode MT-RJ
- Multimode LC
- RJ-45 for STP CAT5e

Optical fibres

- See fibre-optic guides:
 - SPA-ZF Optical glass fibres, multimode graded index type
 - Plastic-core fibre-optic cables, features and instructions for mounting

For more information, see Section 1.4. Product documentation.

Diagnostic LEDs

SPA-ZC 402 common diagnostic LEDs

- Power
- Diagnostic
 - Red
 - Green
 - Yellow

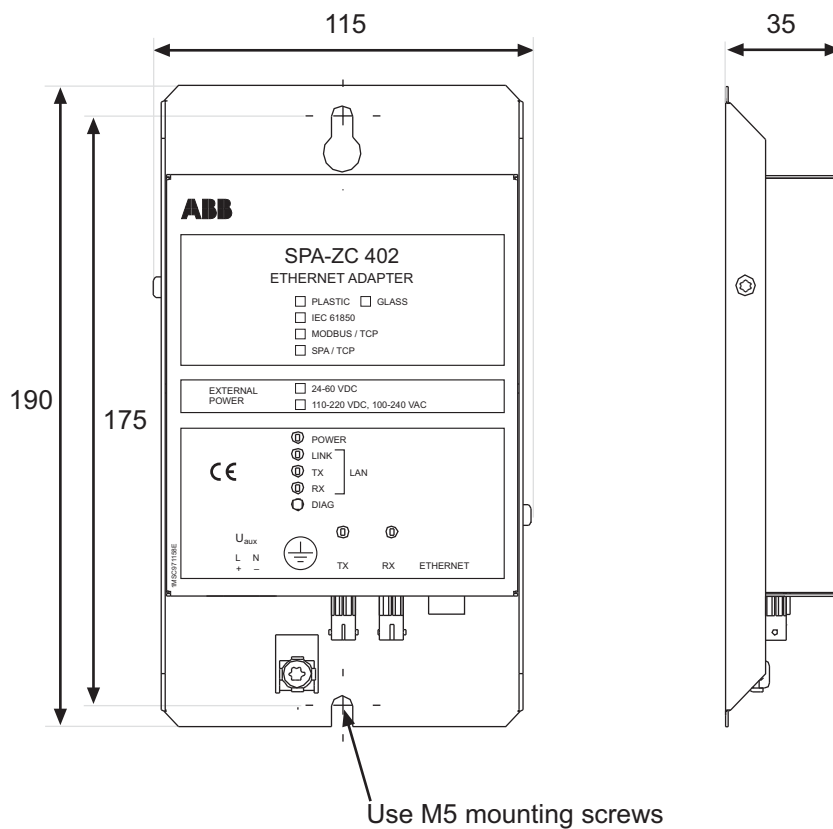
LAN diagnostic LEDs

- LINK
- TX
- RX

SPA diagnostic LEDs

- TX
- RX

Dimensions and weight



A040027B

Fig. 7.1.-1 Dimensions of the SPA-ZC 402 module

Table 7.1.-1 Dimensions and weight

Type	Dimensions [mm]	Weight [g]
SPA-ZC 402	190 x 115 x 35	510

7.2.

Test and conditions

General requirements

Table 7.2.-1 Environmental test and conditions

Recommended service temperature range (continuous)	-10...+55°C
Limited temperature range (short-term)	-40...+85°C
Transport and storage temperature range	-40...+70°C according to the IEC 60068-2-48
Dry heat test	According to the IEC 60068-2-2
Dry cold test	According to the IEC IEC 60068-2-1
Damp heat test, cyclic	According to the IEC 60068-2-30

Table 7.2.-2 Electromagnetic compatibility tests

EMC immunity test level meets the requirements listed below.	
1 MHz burst disturbance test, class III <ul style="list-style-type: none"> • Common mode • Differential mode 	According to the IEC 60255-22-1 2.5 kV 1.0 kV
Electrostatic discharge test, class III <ul style="list-style-type: none"> • For contact discharge • For air discharge 	According to the IEC 61000-4-2 and IEC 60255-22-2 8 kV Not applicable
Radio frequency interference tests <ul style="list-style-type: none"> • Conducted, common mode • Radiated, amplitude-modulated • Radiated, pulse-modulated 	According to the IEC 61000-4-6 and IEC 60255-22-6 10 V (rms), f=150 kHz...80 MHz According to the IEC 61000-4-3 and IEC 60255-22-3 10 V/m (rms), f=80...2700 MHz According to the ENV 50204 and IEC 60255-22-3 10 V/m, f=900 MHz
Fast transient disturbance tests <ul style="list-style-type: none"> • All terminals 	According to the IEC 60255-22-4 and IEC 61000-4-4 4 kV
Surge immunity test <ul style="list-style-type: none"> • Power supply, SPA-ZC402xxxA • Power supply, SPA-ZC402xxxC • RJ45-Cable 	According to the IEC 60255-22-5 and IEC 61000-4-5 4 kV line-to-earth, 2 kV line-to-line 2 kV line-to-earth, 1 kV line-to-line 2 kV line-to-earth
Power frequency (50 Hz) magnetic field IEC 61000-4-8	300 A/m continuous
Electromagnetic emission tests <ul style="list-style-type: none"> • Conducted, RF-emission (Mains terminal) Radiated RF-emission	According to the EN 55011 EN 55011, class A, IEC 60255-25 EN 55011, class A, IEC 60255-25
CE approval	Complies with the EMC directive 2004/108/EC and the LV directive 2006/95/EC

Table 7.2.-3 Standard tests

Mechanical tests	
Vibration tests (sinusoidal)	According to the IEC 60255-21-1, class I
Shock and bump test	According to the IEC 60255-21-2, class I

Table 7.2.-4 Auxiliary power supplies

Type	SPA-ZC 402 xxxA	SPA-ZC 402 xxxC
Input voltage AC	110/120/220/240 V	-
Input voltage DC	110/125/220 V	24/48/64 V
Voltage variation	AC 85...110%, DC 80...120% of rated value	DC 80...120% of rated value
Burden	<4 W	
Ripple in DC auxiliary voltage	Max. 12% of the rated DC value (IEC 60255-11)	
Interruption time in auxiliary DC voltage without resetting	110 V <40 ms	24 V <24 ms

8. Maintenance and service

If the SPA-ZC 402 module or a part of it is found to be faulty, the normal service operation is to replace the entire module.

8.1. LED indicators

Table 8.1.-1 LED indicators

LED	Color		State		Sequence number	Description
Power	Green		On			Power on
Link LAN	Green		On			Indication for LAN link OK
RX LAN	Green		On			Indication for incoming LAN traffic
TX LAN	Green		On			Indication for outgoing LAN traffic
RX SPA	Green		On			Indication for incoming SPA traffic
TX SPA	Green		On			Indication for outgoing SPA traffic
DIAG	Green	Red	Off	On	1	Bootloader booting
			Flashing	On	2	Bootloader, missing boot image
			On	On	3	Starting
			Flashing	Off	4	OK, missing configuration
			On	Off	5	OK, configuration in use
			Off	Flashing	6	Configuration error

Possible sequences are:

- | | |
|-----------|-------------------------------|
| 1 → 3 → 5 | Normal situation |
| 1 → 2 | Missing boot image |
| 1 → 3 → 4 | Configuration file is missing |
| 1 → 3 → 6 | Configuration error |

8.2. Communication settings

SPA addresses in sAddr are not properly defined if

- Diagnostic counter SPAREplyTimo increases constantly and SPAREplyData remains 0 in the LD0.CDGGIO1 logical node. These diagnostic counters are readable from the IEC 61850 client.
- Quality of the data is INVALID.

The following IED-specific settings have to be checked when setting up REF 541/3/5, REM 543/5 or RET 541/3/5:

- SPA baud rate and SPA slave number in IED

Baud rate and slave number have to be according to the SPA-ZC 402 configuration in X3.2/Communication 2.

8.3. IP Query

By using the IP Query Tool in Communication Engineering Tool (CET) for SPA-ZC 40x, it is possible to see all connected SPA-ZC 40x, devices, their communication parameters and version information.

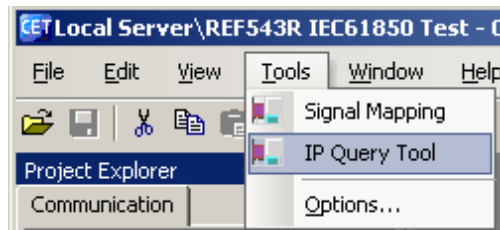
Example:

```
Sending IP query 1
RECEIVED MESSAGE FROM 10.58.125.151:
  Mac Address: 00-0C-02-B0-04-89
  Subnet Mask: 255.255.255.0
  Default Gateway: 10.58.125.150
  SNTP servers:10.58.125.150 127.0.0.1
  SW_SPATYPE: SPA-ZC40x
  SW_NUMBER: 1MRS118533
  SW_BUILD: 110
  SW_REVISION: B
  Compiler DATE_TIME: Nov 28 2005 12:38:02
```

To use the IP Query Tool:

1. Select **Tools > IP Query Tool** to start the tool, see Fig. 8.3.-1.

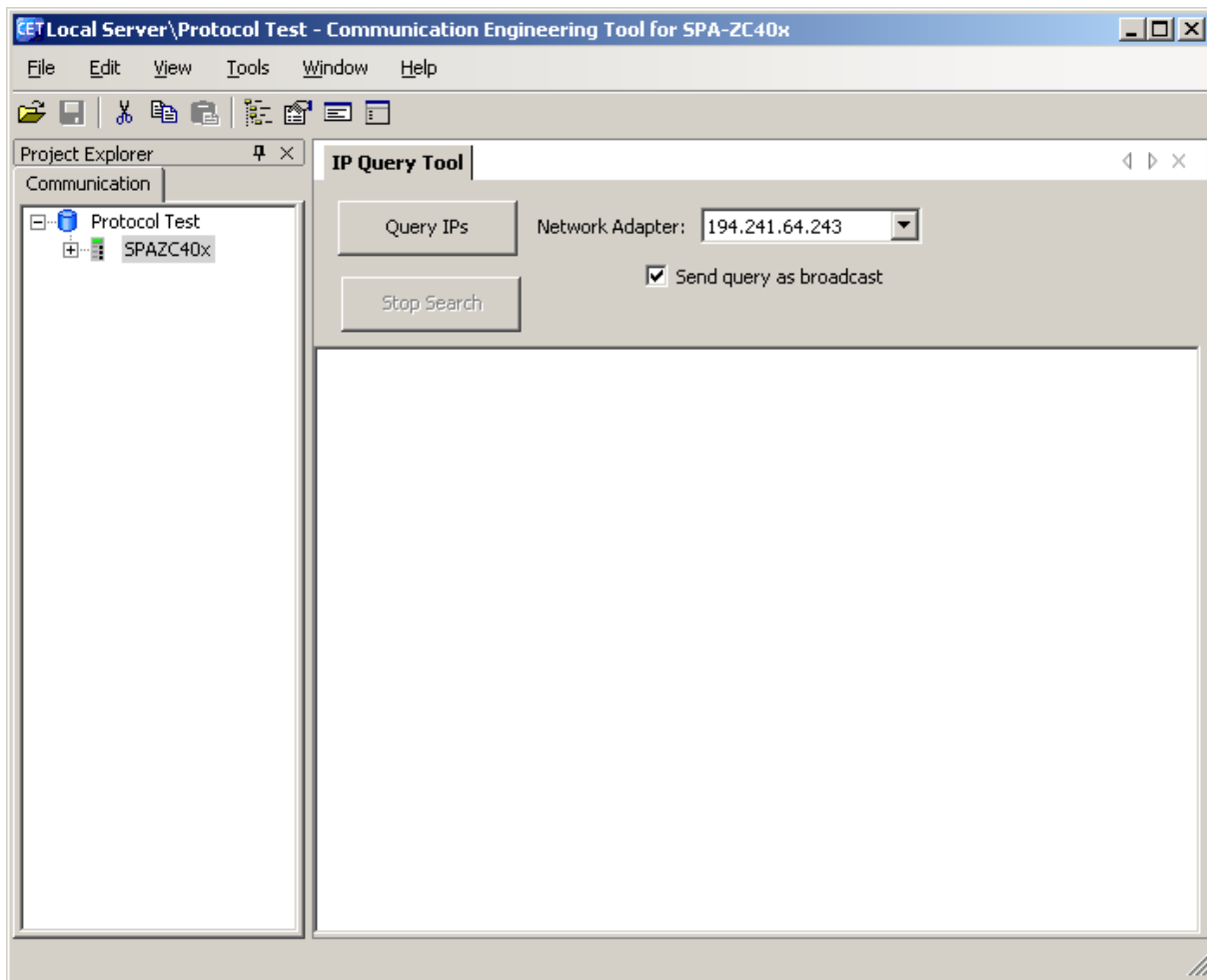
Query activates devices from the network until it is stopped.



A060127

Fig. 8.3.-1 Starting the IP Query Tool

2. Select the Network adapter to send a query, see Fig. 8.3.-2.



A060128

Fig. 8.3.-2 Selecting Network adapter

3. Click **Start** to start the query.
4. Click **Stop** to stop the query.

Connected devices are displayed in the Output pane, Fig. 8.3.-2.

Additional information depends on the SPA-ZC 40x version. If version 1.1.1 is used, only MAC address is displayed. If version 2.0 is used, MAC address, other address and revision information is displayed.

8.4. Identification

If contacting the Customer Service, it is necessary to send the following information by request:

- Version information of Communication Engineering Tool (CET) for SPA-ZC 40x
 Select **Help > About** to view the version information.
- SPA-ZC 402 version information

The version information can be read from the device's label. If the device is updated afterwards, use CET's IP query to get the correct version information from the device memory. For more information about IP query, refer to Section 8.3. IP Query.

8.5. Obtaining error logs

The following session transfers error.log file through ftp.

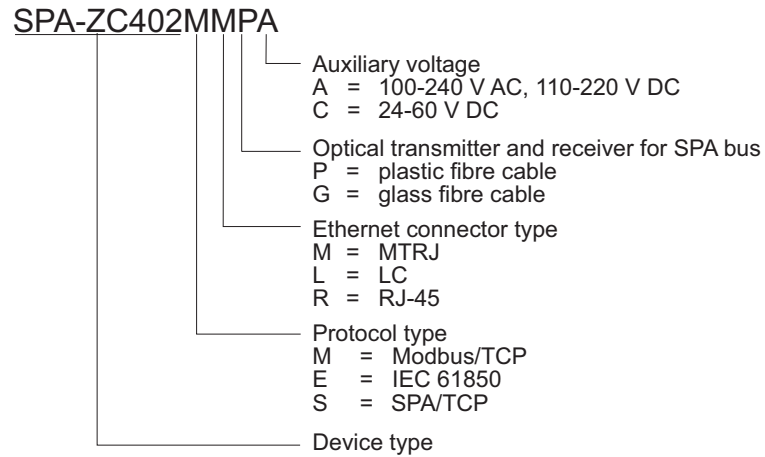
```
C:\>ftp x.x.x.x
```

```
User: abb
```

```
Password: abb
```

```
ftp> cd log  
ftp> get error.log  
ftp> quit
```

9. Ordering information



A060159

Fig. 9.-1 Ordering information for SPA-ZC 402

SPA-ZC402CD

- SPA-ZC 402 configuration CD
 - Engineering tool, Communication Engineering Tool (CET) for SPA-ZC 40x



Order at least one SPA-ZC 402 configuration CD with your delivery to get the Communication Engineering Tool. The SPA-ZC 402 package does not include the configuration CD by default.

10. Terminology

Term	Description
Communication Engineering Tool	Also known as CET. Software for configuring and monitoring communication gateways or communication front ends.
Intelligent Electronic Device	Also known as IED. Devices containing advanced logics such as meters, protection and control relays and trip units.
Modbus	By extension, communication board implementing the Modbus protocol for REF 542plus.
sAddr	Short Address Information The sAddr attribute allows the allocation of a short address to DO attributes. Short addresses can be used within the communication to be more efficient either in the communication, or in the handling of messages at client or server. Furthermore, they can be used as IED internal identification for the attribute.
Snap-in	Connector type for plastic fibre cable
SPA	Data communication protocol developed by ABB

11. Abbreviations

Abbreviation	Description
CD	Change detect; compact disk
CET	Communication Engineering Tool
CID	Configured IED description
CRC	Cyclical redundancy check
DOI	Data object instance
EMC	Electromagnetic compatibility
FTP	File transfer protocol
IED	Intelligent electronic device
IP	Internet protocol
LAN	Local area network
LED	Light-emitting diode
LN	Logical node
PC	Personal computer
SNTP	Simple Network Time Protocol
SQL	Structured query language
ST	Straight-tip; a connector type for fibre optic cable
STP	Shielded twisted pair
TCP	Transmission Control Protocol
UTC	Universal time clock



ABB Oy
Distribution Automation
P.O. Box 699
FI-65101 Vaasa
FINLAND
+358 10 2211
+358 10 224 1080
www.abb.com/substationautomation