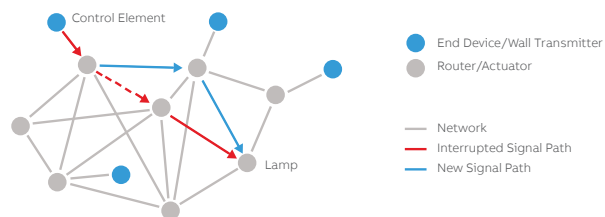


## Networking via Bluetooth

Bluetooth is particularly interesting for networking in the smart home sector because the technology is already built into almost all smartphones, tablets and even smartwatches and can be used directly. Furthermore, users are quite familiar with the use of Bluetooth connections, e.g. for pairing speakers.

Bluetooth consumes little energy and you can also operate controls and components in the long term with batteries, rechargeable batteries or energy harvesting (self-supply).



Networking as a mesh network realizes a reliable wireless connection. The use of the EnOcean Bluetooth module guarantees full compatibility with all so-called "EnOcean System Partners" Thus, the new Bluetooth Smart Switch can directly control lights from well-known manufacturers: Casambi, Helvar, Vossloh Schwabe, and Xitaco Wirepas.

## Contact

### Busch-Jaeger Elektro GmbH

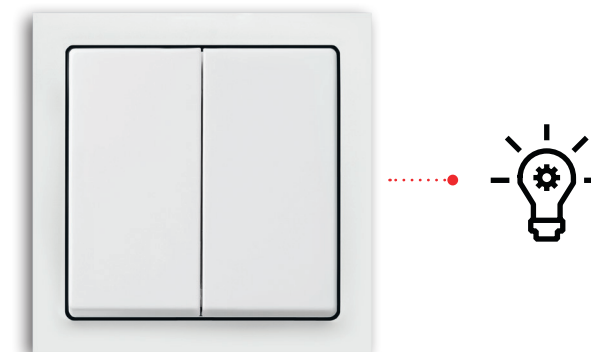
P.O. Box  
58505 Lüdenscheid  
Germany

info.bje@de.abb.com

Central sales service:  
Tel.: +49 (0)2351 956-1600  
Fax: +49 (0)2351 956-1700

[abb.com/lightswitches](http://abb.com/lightswitches)

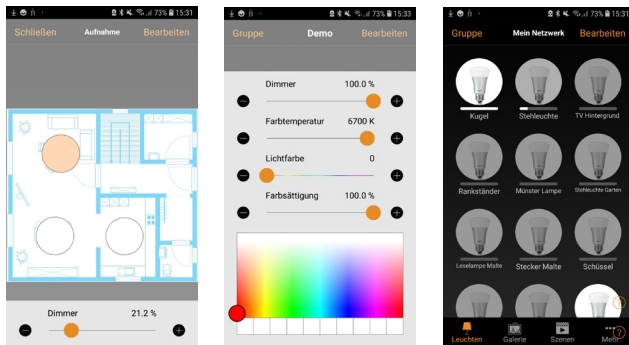
## Bluetooth Smart Switch



# Commissioning via the Casambi App

The smart switches are commissioned via the manufacturer apps such as Casambi. The app is available for free for iOS as well as for Android for installation in the app stores.

Through the app, Casambi participants can be searched and grouped into networks and any functions provided by Casambi partners can be configured - from simple to complex control - making it suitable for both private and professional use.

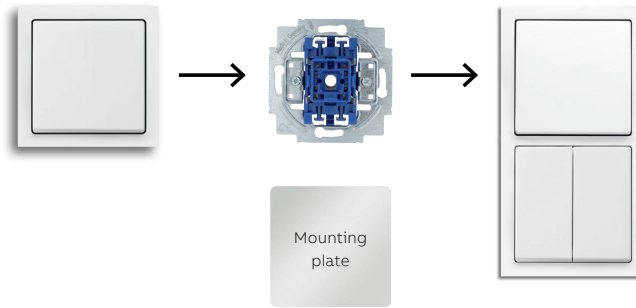


Possible functions include:

- Color control (RGBW)
- Turnable white
- Sunrise/sunset simulation
- Calendar & Timer (Timer)
- Luminaire grouping
- Scene control
- Sequences (changes over time)
- Forced guides
- Use of own spatial images for better orientation

# Bluetooth Smart Switch ideal for retrofits

The Bluetooth Smart Switches can be quickly and easily integrated into the existing electrical installation or mounted as a separate control point.



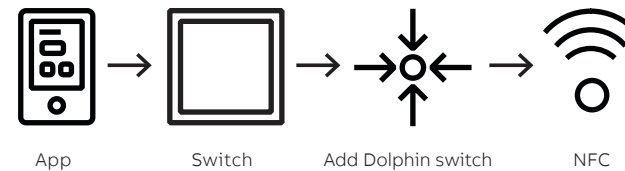
Conventional switch.

Remove rocker and 1-fold cover frame. Attach mounting plate on the wall.

Place new 2-fold cover frame and mount the control element.

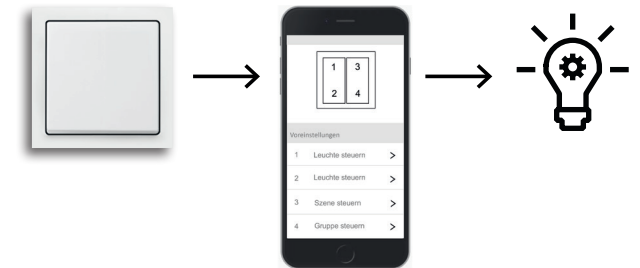
## Add to a network

After installation, the switch is added to a created network via the Casambi app. NFC (near field communication) helps with this. The Casambi Smart Switch only needs to be held up to the smart phone to be identified.



## Assignment of functions

Once added to a network, the Bluetooth Smart Switch can be assigned for up to four functions.



The Bluetooth Smart Switch consists of: Smart switch insert, rocker 2-fold, frame 1-fold as well as mounting plate with intermediate ring, and is available in several switch designs.



## ORDERING INFORMATION

Art. no.: 6716/01 UJ-84-500  
Order No.: 2CKA006730A0156