

WHAT IS THE CONNECTION REQUIREMENTS FOR DRIVE STUDIO

Description:

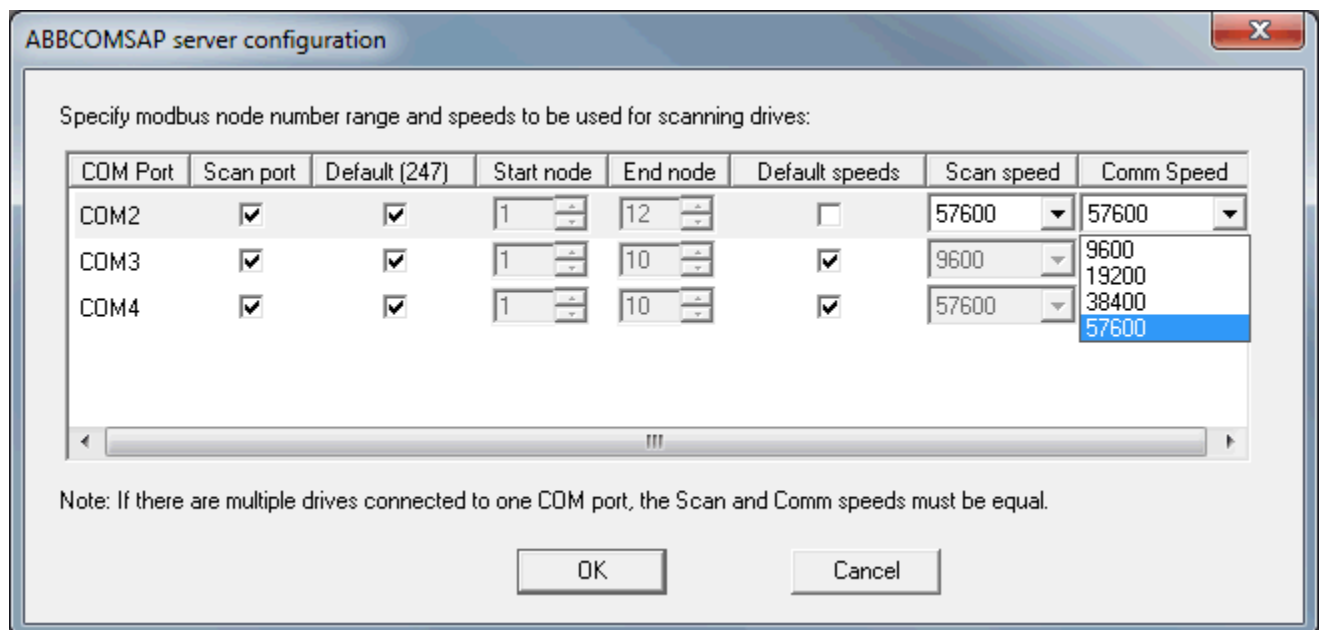
What is the connection requirement for Drive Studio software (baud rate, parity and Stop bit) on an ACS850 or ACSM1 drive?

Answer:

The Drive Studio software Baud rate is determined automatically. At start-up, and after a communication break, the initial rate is 9600 baud.

The Drive Studio uses by default are 9600bps, 8 NONE and 2 but only the baud rate is configurable in the ACS850 using the Drive Studio software. No parameter changes in the drive are required to change baud rate.

The following screen can be found under Edit -> OPC Server settings



Author: Jeff Fell – Application Eng.		Date: 11, 2013
External	Industry – Industrial	Document #: LVD-EOTN52U-EN
http://www.abb.us/drives		Revision: A
Product Categories: ACS850, ACSM1		

The ACSM1 operates the same way as the ACS850 by default. If manual communications settings are required for the ACSM1, the parameters in group 55 will need to be configured for the manual setting for the control panel port. Also the same settings will need to be programmed in the Drive Studio software. See screen shot above from Drive Studio for settings.

55.01	MDB STATION ID	FW block: None
	Defines the ID of the drive on the RS-485 network. Each drive must have a dedicated ID number.	
	1...247	ID number. For drives, use a number between 1 and 31. (DriveStudio uses ID number 247.)
55.02	MDB BAUD RATE	FW block: None
	Sets the baud rate on the network. Note: This parameter must be set to (0) Auto if a control panel is used as the controlling device.	
	(0) Auto	Baud rate is determined automatically. At start-up, and after a communication break, the initial rate is 9600 baud.
	(1) 9600	9600 baud.
	(2) 19200	19200 baud.
	(3) 38400	38400 baud.
	(4) 57600	57600 baud.
55.03	MDB PARITY	FW block: None
	Defines the use of parity bits. The same setting must be used in all on-line stations.	
	0...3	Number of parity bits.

Documents or other reference material:

ACS850 Standard Control Program Firmware Manual
3AUA0000045497

ACSM1 Speed and Torque Control Program Firmware Manual
3AFE68848261

ACSM1 Motion Control Program Firmware Manual - DriveStudio/DriveSPC version
3AFE68848270

Corrective Actions:

None

Author: Jeff Fell – Application Eng.		Date: 11, 2013
External	Industry – Industrial	Document #: LVD-EOTN52U-EN
http://www.abb.us/drives .		Revision: A
Product Categories: ACS850, ACSM1		