



PRODUCT GUIDE

ReliaGear™ lighting panelboards

Split bus panelboards



Split Bus Lug Panelboard Configuration 1 and 2

ReliaGear split bus lighting panelboards feature ABB's advanced breaker technology in the Formula A2 and Tmax XT1 molded case circuit breakers as mains and sub-feeds. Split bus panelboards have 2 separate sets of bus bar allowing you to de-energize one section of the panel at a time.

Applications:

Parking garages, recreational sporting event areas, arenas, casinos, educational institutions, and fields

9 configurations available through empower.

Incoming type:

Lighting contactor, main lug or main breaker

Panelboard selections

- RQ/RL up to 225A main breaker or main lug, max 22 KAIC at 240V
- RE up to 125A main breaker or 225A main lug, max 18 KAIC at 480V

Main breakers

Formula A2, XT1, THQB, TEY, TEY(D/H/L)

Feeders:

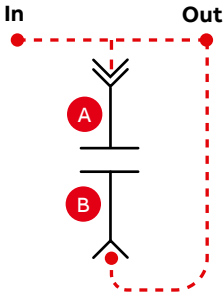
THQB, TEY

Sub-feeds:

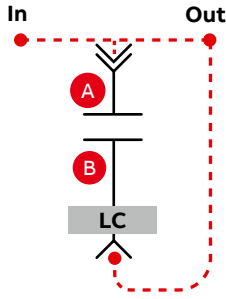
Formula A2, THQB, TEY, TEY(D/H/L)
TED, XT1

Max rating of 22 KAIC at 240V and 208/120V and 18 KAIC @480V.

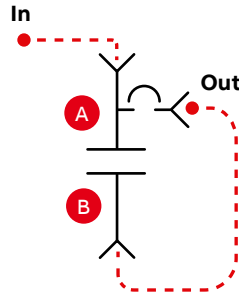
01 Lug A | A to B lug | Lug B



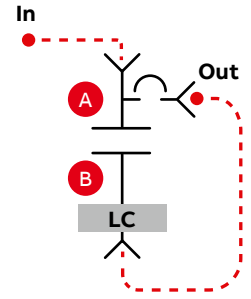
02 Lug A | A to B lug | LC B



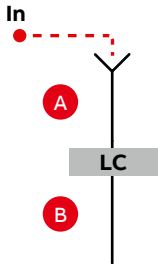
03 Lug A | BRK. A to B | lug B



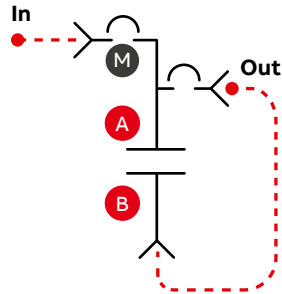
04 Lug A | BRK A to B | LC B



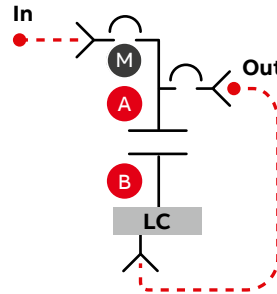
05 Lug A | LC A to B



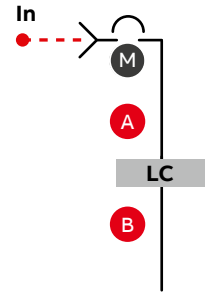
06 BRK A | BRK A to B | lug B



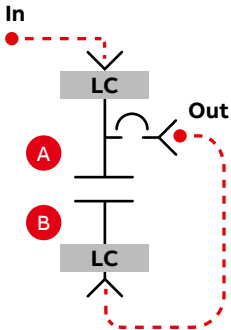
07 BRK A | BRK A to B | LC B



08 BRK A | LC A to B



09 LC A | BRK A to B | LC B



Legend



Main breaker



Lugs



Section A



Cabled by others



Dual lugs



Section B



Lighting contactor



Breaker



Subfeed

Enclosures available

Panel size	Box catalog number	Box size inches ¹	Front catalog number ²
0–25.5	AB25	25.5	AF25F or S
28.5–31.5	AB31	31.5	AF31F or S
34.5–37.5	AB37	37.5	AF37F or S
40.5–43.5	AB43	43.5	AF43F or S
46.5–48.5	AB49	49.5	AF49F or S
52.5–55.5	AB55	55.5	AF55F or S
58.5–64.5	AB64	64.5	AF64F or S
67.5–76.5	AB76	76.5	AF76F or S

¹ Standard boxes are 20" wide by 5.81" deep.

² Flush fronts are 1-¹/₈" larger than box. Surface fronts are ¹/₄" larger than box.

ABB Inc.
 Electrification Business
 860 Ridge Lake Blvd.
 Memphis, TN 38120

abb.com/lowvoltage

GE is a trademark of GE.
Manufactured by ABB Ltd under license
from General Electric Company.

We reserve the right to make technical changes or modify the contents of this document without prior notice. With regard to purchase orders, the agreed particulars shall prevail. ABB AG does not accept any responsibility whatsoever for potential errors or possible lack of information in this document.

We reserve all rights in this document and in the subject matter and illustrations contained therein. Any reproduction, disclosure to third parties or utilization of its contents – in whole or in parts – is forbidden without prior written consent of ABB AG. Copyright © 2021 ABB. All rights reserved.