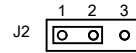


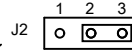
NOTES:

1. **WARNING:** This drawing does not illustrate completely the installation methods required for hazardous locations. Prior to any installation in a Classified Hazardous Location, verify installation methods by the Control Drawing referenced on the product's name tag and national and local codes.

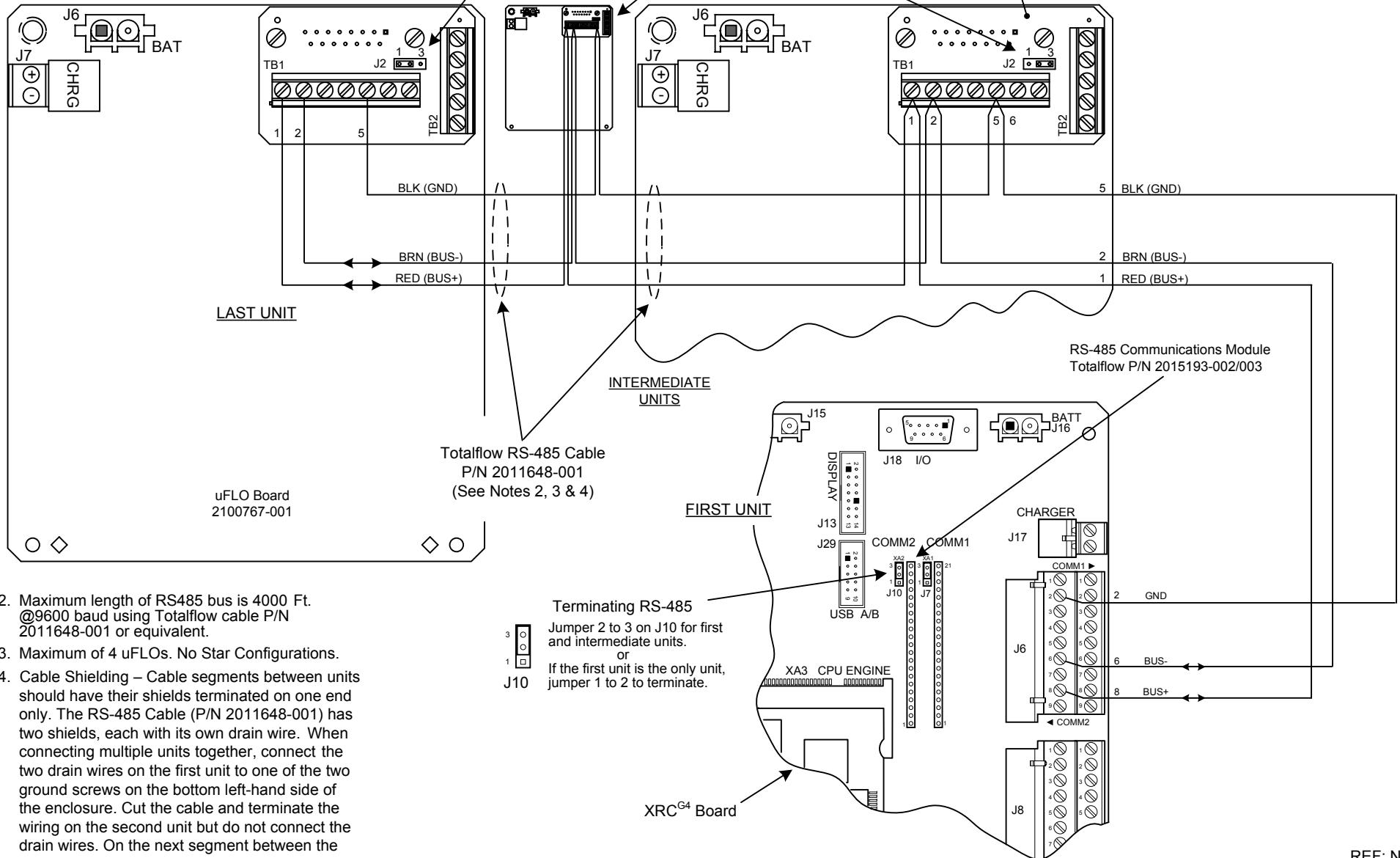
Jumper 1 to 2 on J2 to terminate last unit on bus.



Jumper 2 to 3 on J2 for first and intermediate units.
or
If the first unit is the only unit, jumper 1 to 2 to terminate.



RS-485 Comm Term Bd
P/N 2101059-001
or
P/N 2100888-001



2. Maximum length of RS485 bus is 4000 Ft. @9600 baud using Totalflow cable P/N 2011648-001 or equivalent.
3. Maximum of 4 uFLOs. No Star Configurations.
4. Cable Shielding – Cable segments between units should have their shields terminated on one end only. The RS-485 Cable (P/N 2011648-001) has two shields, each with its own drain wire. When connecting multiple units together, connect the two drain wires on the first unit to one of the two ground screws on the bottom left-hand side of the enclosure. Cut the cable and terminate the wiring on the second unit but do not connect the drain wires. On the next segment between the second and third units, connect the two drain wires to the second unit but not to the third unit. Repeat this process until all units are wired.



TOTALFLOW
Products

ACTION
L22187

DOC TYPE
UD

TITLE
XRC^{G4} (2103329 BOARD) COMM2 (RS-485)
TO UFLO W/ RS-485 COM TERM BD

DWG NO.
2104278

REV
AA

SHEET
1 OF 1

REF: N/A