

We reserve all rights in this document and in the information contained therein. Reproduction, use or disclosure to third parties without express authority is strictly forbidden. © ABB 19

Pos. Lage	R connects förbinder	H connects förbinder	
1	12-13	2-15	
2		3-15	
3		4-15	
4A		5-15	
4		6-15	
5		7-15	
6		8-15	
7		9-15	
8A		10-15	
8B		11-15	
8		12-14	12-15
8C			1-15
8D			2-15
8E			3-15
9	4-15		
10	5-15		
11	6-15		
11A	7-15		
12	8-15		
13	9-15		
14	10-15		
15		10-15	

A position with letter is a through position and gives the same voltage as the normal position.

Läge med bokstav är ett genomloppsläge och ger samma spänning som normalläget.

On-load tap-changer type UZER., UZFR., 15 tap positions, plus/minus switching.

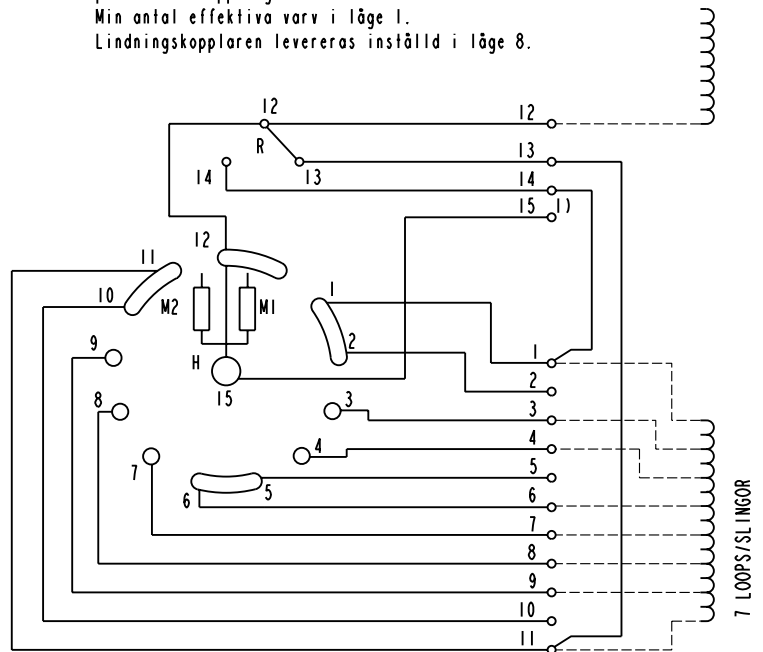
Min effective No. of turns in pos. 1.

The tap-changer is delivered set in pos. 8.

Lindningskopplare typ UZER., UZFR., 15 lägen, plus/minus-koppling.

Min antal effektiva varv i läge 1.

Lindningskopplaren levereras inställd i läge 8.



The tap-changer is shown in pos. 8  
Lindningskopplaren visad i läge 8

R Change-over selector  
Plus/minus-omkopplare

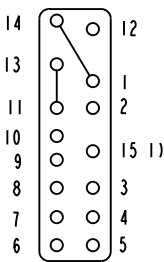
H Main contact  
Huvudkontakt

M1, M2 Transition contacts  
Motståndskontakter

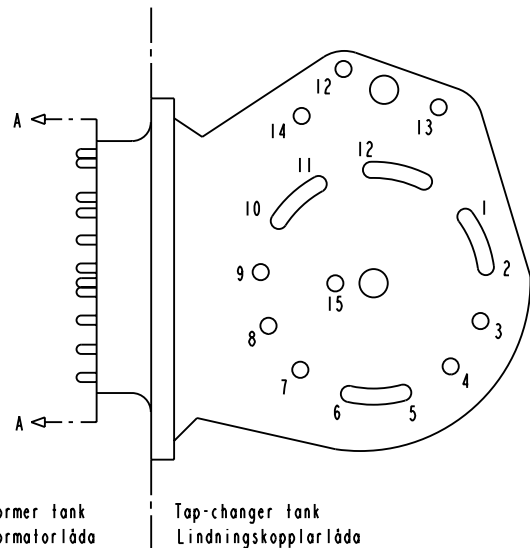
1) Connections between the terminals 15 of the three phases are included in the star-point type.

Förbindningar mellan uttag 15 i de tre faserna ingår i nollpunktsutförandet.

Terminal board Plint



Section A-A  
Sektion A-A



Transformer tank  
Transformatorlåda

Tap-changer tank  
Lindningskopplarlåda

Sheet	Cont
Year	Week
Dept	
Rev In	Revision
Appd	Year
Week	
Design checked by	Accepted for prod by
Design checked by	Drawn by
Design checked by	Issued by Dept
Year	Week
Lang	Sheet
Rev In	Cont



Asea Brown Boveri

Description (English)  
CONNECTION DIAGRAM

Description (own language)  
KOPPLINGSSCHEMA

DATAORIGINAL

File name  
0397-4

Lang

Sheet  
1

Rev In

Cont

5492 0397-4