

TECHNICAL DATA SHEET - INTERACTIVE PDF

Coupling, three-piece, PVC Coated

UNY male unions and UNF female unions

Ocal[®]



UNF/UNY series couplings are used with PVC coated rigid conduit systems in hazardous and corrosive environments

Certifications / Standards:



3-Part Specification: 26 05 33.14

End User Tools

Features:

- Explosion-proof
- Dust-ignition proof
- UV resistant gray PVC coating
- Nominal 0.002" (2 mil) blue urethane coating on both interior and exterior and nominal 0.040" (40 mil) PVC coating bonded to exterior
- PVC coating helps provide corrosion protection and helps maintain grounding continuity of the rigid conduit system
- Flexible PVC sealing sleeves help provide corrosion protection to threaded connectors

Applications:

- UNY male unions are used to connect rigid conduit to a conduit fitting, junction box, control station enclosures, or to other electrical components containing enclosures
- UNF female unions are used to connect two adjacent rigid conduits and provide a means for future modifications to the system
- For use in rigid conduit systems located:
 - Indoors or outdoors
 - In wet locations
 - In hazardous locations
 - In areas where corrosion protection is needed

Compliances and Certifications:

- UL Certified
 - UL1203
 - CSA C22.2 No. 25 & No 30
 - NEC/CEC
 - Class I, Divisions 1 & 2, Groups B, C, D (Steel and iron only)
 - Class I, Divisions 1 & 2, Groups C, D (Aluminum only)
 - Class II, Divisions 1 & 2, Groups E, F, G
 - Class III
- NEMA Standard RN-1

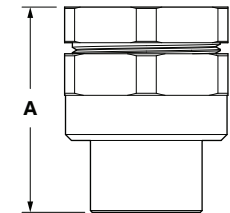
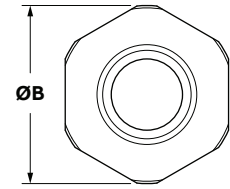
Material / Finishes:

- Steel / Gray PVC coating (½" - 1")
- Iron / Gray PVC coating (1 ¼" - 4")
- Aluminum / Gray PVC coating

Coupling
UNF-style, steel / iron

Product selection - inches			
Part no.	Conduit trade size	A	B
UNF105-G	½	1.88	1.50
UNF205-G	¾	2.13	1.81
UNF305-G	1	2.16	2.00
UNF405-G	1 ¼	2.25	2.75
UNF505-G	1 ½	2.75	3.06
UNF605-G	2	2.50	3.81
UNF705-G	2 ½	3.50	4.31
UNF805-G	3	4.00	5.06
UNF905-G	3 ½	4.16	5.69
UNF1005-G	4	4.25	6.19

Notes: Product must be installed in accordance with applicable national and local electrical codes.
Dimensions shown are nominal for uncoated parts and should only be used as a reference



Coupling
UNF-style, aluminum

Product selection - inches			
Part no.	Conduit trade size	A	B
UNF105SA-G	½	1.63	1.50
UNF205SA-G	¾	1.78	1.78
UNF305SA-G	1	3.00	2.03
UNF405SA-G	1 ¼	3.63	2.75
UNF505SA-G	1 ½	3.97	3.06
UNF605SA-G	2	4.09	3.88
UNF705SA-G	2 ½	5.34	4.63
UNF805SA-G	3	5.78	5.16
UNF905SA-G	3 ½	6.47	5.63
UNF1005SA-G	4	6.47	6.19

Notes: Product must be installed in accordance with applicable national and local electrical codes.
Dimensions shown are nominal for uncoated parts and should only be used as a reference

Coupling

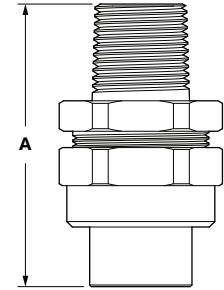
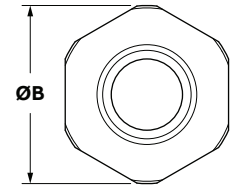
UNY-style, steel / iron

Product selection - inches

Part no.	Conduit trade size	A	B
UNY105-G	½	2.39	1.50
UNY205-G	¾	2.44	1.81
UNY305-G	1	2.75	2.00
UNY405-G	1 ¼	3.06	2.75
UNY505-G	1 ½	3.63	3.06
UNY605-G	2	3.50	3.81
UNY705-G	2 ½	4.81	4.31
UNY805-G	3	5.34	5.06
UNY905-G	3 ½	5.50	5.69
UNY1005-G	4	5.63	6.19

Notes: Product must be installed in accordance with applicable national and local electrical codes.

Dimensions shown are nominal for uncoated parts and should only be used as a reference



Coupling

UNY-style, aluminum

Product selection - inches

Part no.	Conduit trade size	A	B
UNY105SA-G	½	2.47	1.50
UNY205SA-G	¾	2.63	1.78
UNY305SA-G	1	3.00	2.03
UNY405SA-G	1 ¼	3.63	2.75
UNY505SA-G	1 ½	3.97	3.06
UNY605SA-G	2	4.09	3.88
UNY705SA-G	2 ½	5.34	4.63
UNY805SA-G	3	5.78	5.16
UNY905SA-G	3 ½	6.47	5.63
UNY1005SA-G	4	6.47	6.19

Notes: Product must be installed in accordance with applicable national and local electrical codes.

Dimensions shown are nominal for uncoated parts and should only be used as a reference