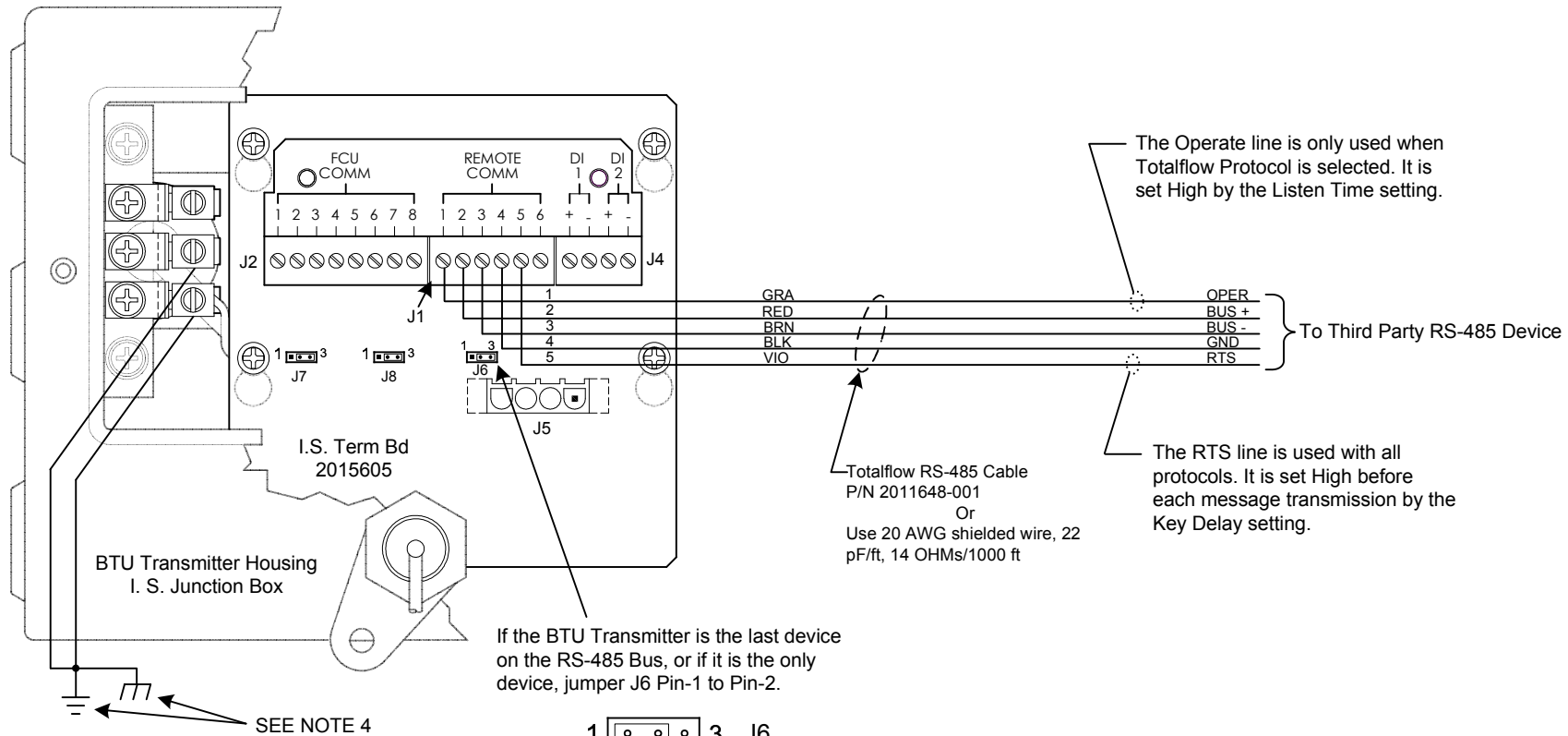


NOTES:

1. Prior to any installation in a classified hazardous location, verify installation methods by the Control Drawing referenced on the product's name tag.
2. Maximum length of RS485 bus is 4000 Ft. @9600 baud using Totalflow cable P/N 2011648-001 or equivalent.
3. To access termination board, remove I.S. Junction Box front cover.

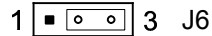


4. Redundant Ground Wires per ISA RP 12.6 Wires Must be GRN 12 AWG. Ground Electrode per CEC C22.1 10-700 or NEC 250-81

If the BTU Transmitter is the last device on the RS-485 Bus, or if it is the only device, jumper J6 Pin-1 to Pin-2.



If it is not the last device, jumper J6 Pin-2 to Pin-3 (Pin-1 is on the left, when viewing the I.S. Board).



REF: N/A

ABB	TOTALFLOW Products	ACTION	DOC TYPE	TITLE	DWG NO.	REV	SHEET
		D18508	UD	BTU 8000/8100 REMOTE PORT RS-485 2-WIRE W/OPER,GND & RTS GENERIC WIRING GUIDE	2102279	AB	1 OF 1