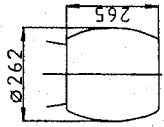
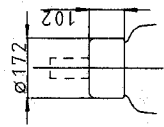


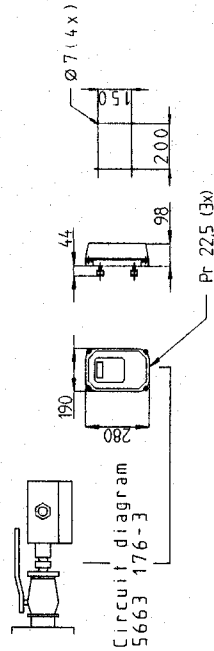
Shield oil-side  
(Additional accessories)  
LF 170 046-U or  
LF 170 046-F



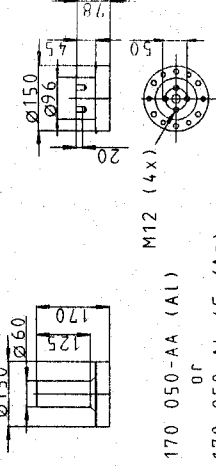
Shield SF6-side  
(Additional accessories)  
LF 170 046-F



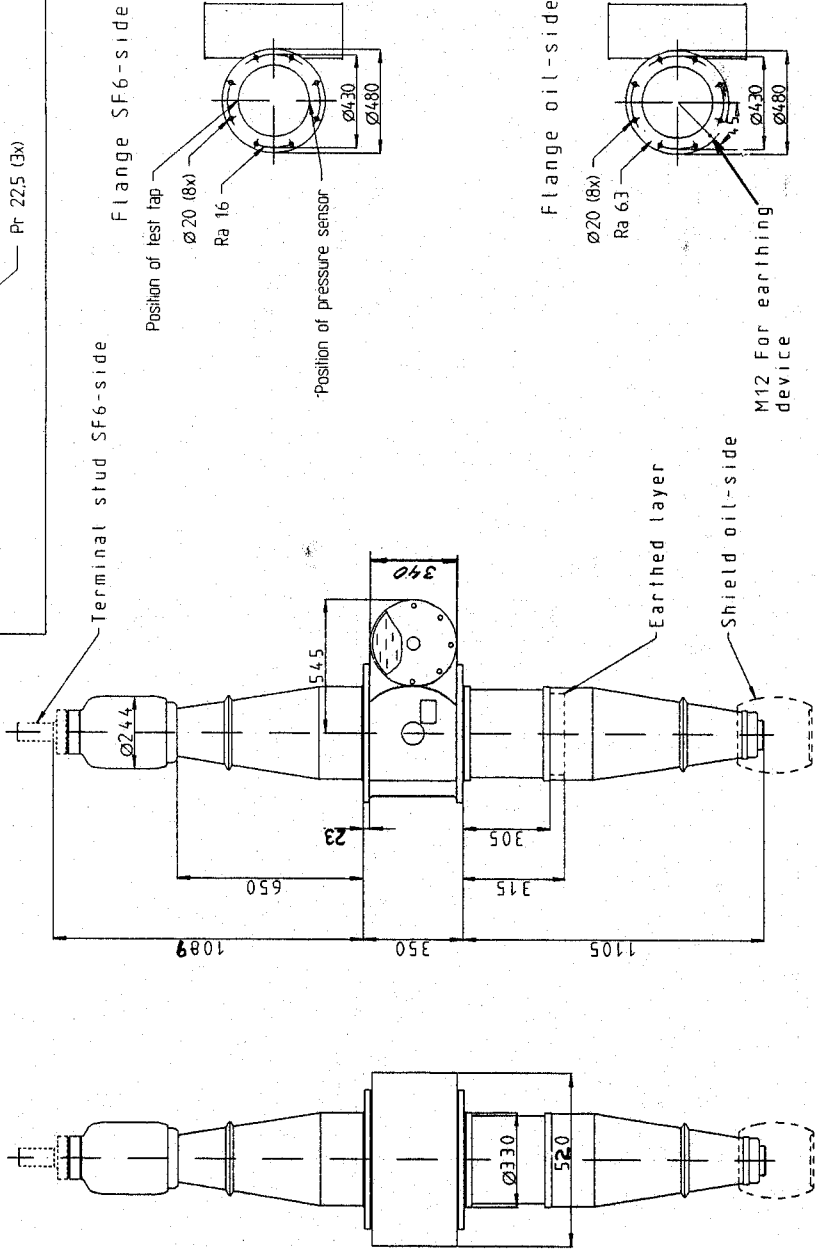
Pressure supervision equipment  
LF 410 024-K or LF 410 024-L  
(Additional accessories)



Terminal stud SF6-side  
(Additional accessories)  
LF 170 050-AA (AL)  
or  
LF 170 050-AL (Cu/Ag)



LF 170 050-AA (AL)  
or  
LF 170 050-AL (Cu/Ag)

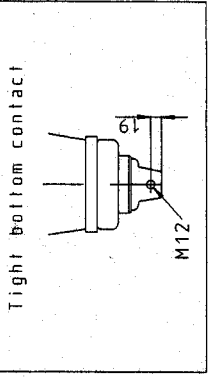


Electrical data

Ratings	Rated voltage	420 kV
	Max. phase to ground	245 kV
	Rated current Vertical	2500 A
	Rated current Horizontal	1600 A
Test voltages	Lighting impulse	1425 kV
	Switching impulse	1175 kV
Routine test	Power frequency	630 kV

ABB Components AB	
Bushing	GOEK 1425
No.	Horiz. 1600 A
Un/uy	420/245 kV Vert. 2500 A
Test	LI/SI/AC 1425/1175/630 kV
Year	L 1105 mm M 285 kg
-PF	%C1/C2 PF

Catalogue number: LF 124 012-B



Tight bottom contact

Accepted by	Accepted for prod by
Design checked by Heyman	Description (English) GOEK 1425 FE=300
Drawing checked by JONSSON	Description (own language)
Issued by COM/BK	Drawn by Andersson
94 31	Issued by Year/Week

2	340 added	99 41
1	1089 1088 1080	98 06
Rev no	Revision	App'd Year Week

ABB Components

2753 015-31

Sheet	Cont
Long Sheet	Rev Cont
File name	DATADRIGINAL

We reserve all rights in this document. In the information contained therein. Reproduction or use or disclosure to third parties without express authority is strictly forbidden. © ABB 19