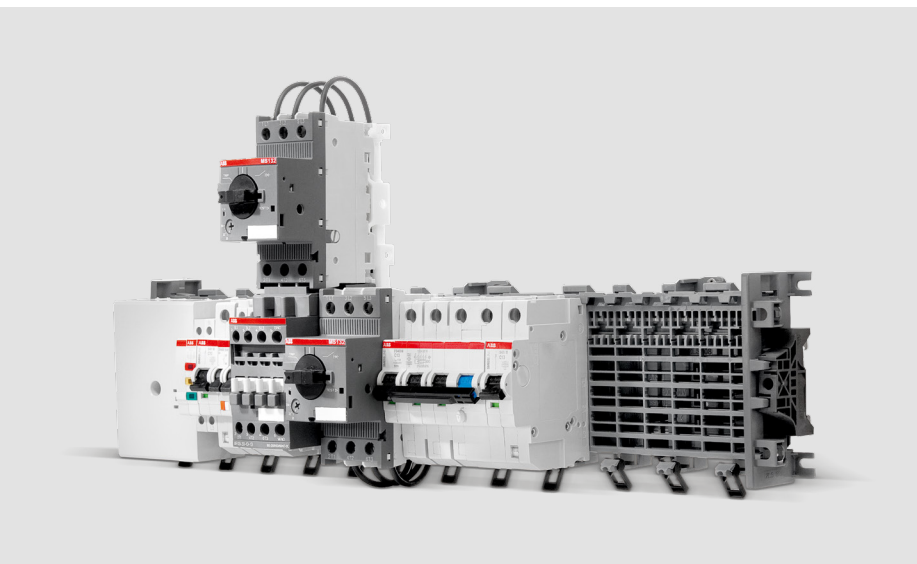


VALUE PROP

SMISLINE TP – Touch proof bus system

Flexibility with power and safety

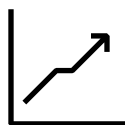


SMISLINE TP is the only truly modular and expandable IP20 touch proof bus system on the market for UL 508 and UL 489 applications that can be tailored to fit your individual needs.



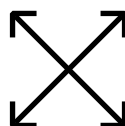
Enhance safety

- IP20 bus system isolates personnel from unintentional exposure to energized systems
- Current limiting branch breakers reduce the arc flash potential in a shortcircuit event
- Mechanical connections that are not electrically connected to the bus bar further reduce potential for contact of energized components



Truly economical

- Snap-on installation; No need to strip wires, drill and tap pans
- Combination modules have smaller footprint than individual components
- Accepts snap-on preassembled components



Highly flexible

- Individual components can be removed and replaced from the bus without needing tools
- Loads can be easily balanced without wiring changes

SMISLINE TP

Technical details

Specifications

From 6 to 80 module positions; Can be mounted horizontally and vertically

125 A amp bus system, can be center fed for 200 amp

600 V AC

50 kA with 200 amp backup fuse

UL 489 distribution applications branch breaker offering up to 63 A @ 240 V

UL 508 control panel solutions suitable for contactor, motor starter and multiple standard DIN rail components

Value added and assembled OEM specific configuration package solutions available, resulting in significant SKU reductions, assembly and test time and labor saving

ABB Inc.
Electrification Products
860 Ridge Lake Blvd.
Memphis, TN 38120

abb.com/lowvoltage

Customer Service
800-816-7809
7:00 a.m. - 5:30 p.m., CST, Monday-Friday
elec_custserv@tnb.com
Technical Support
888-385-1221, Option 1
7:00 a.m. - 5:00 p.m., CST, Monday-Friday
lvs.support@us.abb.com

We reserve the right to make technical changes or modify the contents of this document without prior notice. With regard to purchase orders and/or contracts, the agreed particulars shall prevail. ABB Inc. does not accept any responsibility whatsoever for potential errors or possible lack of information in this document.

We reserve all rights in this document and in the subject matter and illustrations contained therein. Any reproduction, disclosure to third parties or utilization of its contents - in whole or in parts - is forbidden without prior written consent of ABB Inc.
© Copyright 2018 ABB.
All rights reserved.