

## DEH-41408 Installation Instructions

# EntelliGuard<sup>®</sup> G Circuit Breaker Accessories

### Introduction

#### Door Interlock Kit:

A door interlock mechanism may be fitted inside the cassette on the right for Left hinged door or Left for Right hinged door. Specify whether door is Left Hand or Right hand hinged when ordering. Door interlock is different for a cassette with side mounted secondary disconnect.



Figure 1

### Interlock Packs

Each pack contains an interlock lever, a helical spring, circlips (Fig. 1). A door bracket & its mounting screws, washers are also included

### Catalog No.

Catalog No	Description
GLHD	Left Hand door interlock
GRHD	Right Hand door interlock
GRHDSR	Door interlock for cassette with side mounted SD

### Door Interlock Kit



**WARNING:** Before installing any accessories, turn the breaker OFF, disconnect it from all voltage sources, and discharge the closing springs.



**AVERTISSEMENT:** Avant d'installer tout accessoire, mettre le disjoncteur en position OFF, le déconnecter de toute tension d'alimentation, et décharger les ressorts d'armement

Use the following procedure to install the Door Interlock Kit accessory into the circuit breaker.

1. Place the spring over spring pin protruding from cassette side plate as shown in fig 2.



Figure 2



Figure 3a

2. Position interlock lever as shown in Fig 3.

3. Position one leg of the spring below the second pin and position the other leg of the spring over the interlock bracket.

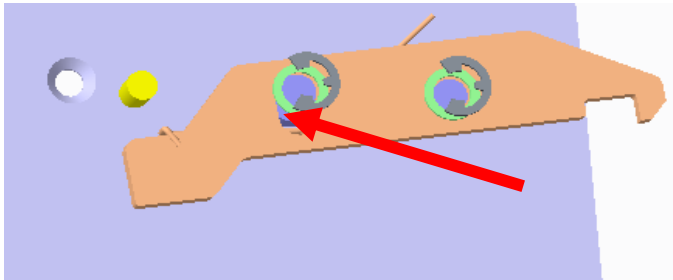


Figure 3b

4. Holding lever in position; insert circlips one each into the groove in the spring pin & Second Pin (Fig. 3a). If there is lateral movement in Lock, put a shim washer between circlip and lock (Fig. 3b).. Now the interlock swings in the slot with respect to the pivot pin 1

5. Based on the door interlock type, drill the hole pattern on the door as shown in fig 3, 4 & 5. Dimensions shown are in mm (inches)

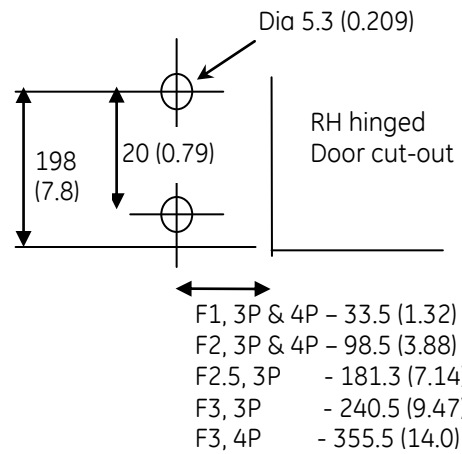
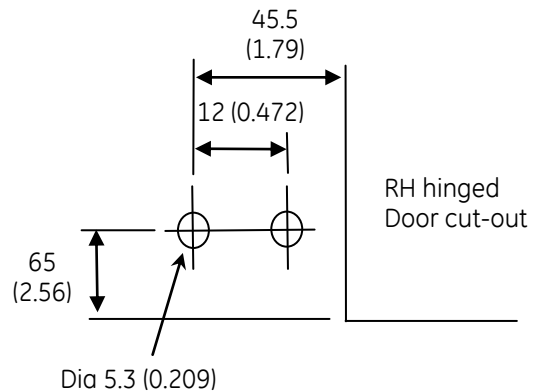
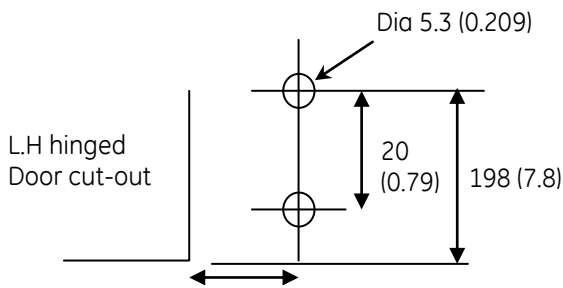


Fig. 4(GRHD)



F1, 3P & 4P Side mounted SD

Fig. 5(GRHDSR)



F1, 3P	- 32.5 (1.28)
F1, 4P	- 132.5 (5.22)
F2, 3P	- 67.5 (2.66)
F2, 4P	- 197.5 (7.78)
F2.5, 3P	- 180.3 (7.10)
F3, 3P	- 222.5 (8.76)
F3, 4P	- 340.5 (13.4)

Fig. 3 (GLHD)

6. Assemble the door bracket to the door using the screws and washers as shown in fig 6.

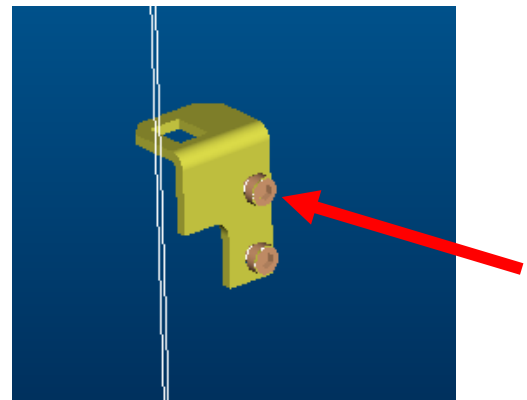


Figure 6

7. When the door is closed, the bracket on the door will be hooked to the door interlock on the cassette as shown in fig 7.

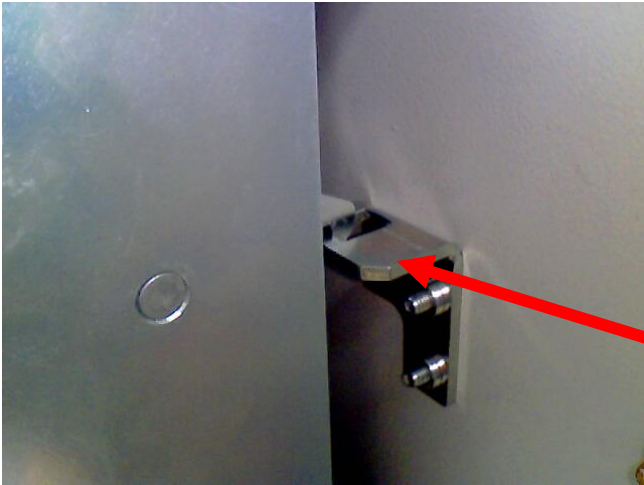


Figure 7

These instructions do not cover all details or variations in equipment nor do they provide for every possible contingency that may be met in connection with installation, operation, or maintenance. Should further information be desired or should particular problems arise that are not covered sufficiently for the purchaser's purposes, the matter should be referred to the ABB Inc.

—  
**ABB Inc.**  
305 Gregson Drive  
Cary, NC 27511.  
electrification.us.abb.com

—  
We reserve the right to make technical changes or modify the contents of this document without prior notice. With regard to purchase orders, the agreed particulars shall prevail. ABB Inc. does not accept any responsibility whatsoever for potential errors or possible lack of information in this document.

We reserve all rights in this document and in the subject matter and illustrations contained therein. Any reproduction or utilization of its contents – in whole or in parts – is forbidden without prior written consent of ABB Inc.  
Copyright© 2019 ABB  
All rights reserved